

TUBE FRONT BUMPER

19+ DODGE RAM 1500

FBDR1-07



TOOLS REQUIRED

- 10, 13, 21, 22, and 19mm sockets
- 22, 18mm wrenches
- Trim pry tool
- #4, 5, 8 Allen Bit
- Cutters/ Razor blade
- Extended Ball Nose #8 Allen Tool
- Safety Glasses

SKILL LEVEL

- Intermediate
 - 2 persons
- Medium skill level required,
additional help is required.

TIME REQUIRED

- 5 Hours
- Time to install this should only
take about five hours.

WARNINGS/CAUTIONS BEFORE STARTING INSTALLATION

Before you install this kit – Read and understand all instructions, warnings, cautions, and notes contained in this installation instruction guide. Consult your vehicle owner's manual for proper disconnection of electrical and lifting of vehicle if required for installation of this product.

This install may require some technical skills and knowledge of basic mechanical work. If you do not feel that you are capable of performing this install please take this product to a trained professional.

After reading this guide please contact us with any questions or concerns before installing product.
Customer Service: 855-680-9595

DV8 Offroad is not responsible for any bodily injury or harm to you or your vehicle as a result of an improper install.

Proper installation of this kit required knowledge of the factory recommended procedures for removal and installation of original equipment components. We recommend that the factory shop manual and any special tools needed to service your vehicle be on hand during the installation. Installation of this kit without proper knowledge of the factory recommended procedures may affect the performance of these components and the safety of the vehicle

- Always wear eye protection when operating power tools

Inspect all contents of this package to make sure product is not damaged and all installation hardware has been included. If parts are missing from kit, please be prepared to provide the following information

1. Name of purchase location
2. Bar Code on side of box
3. Date above bar code
4. Date inside box cover

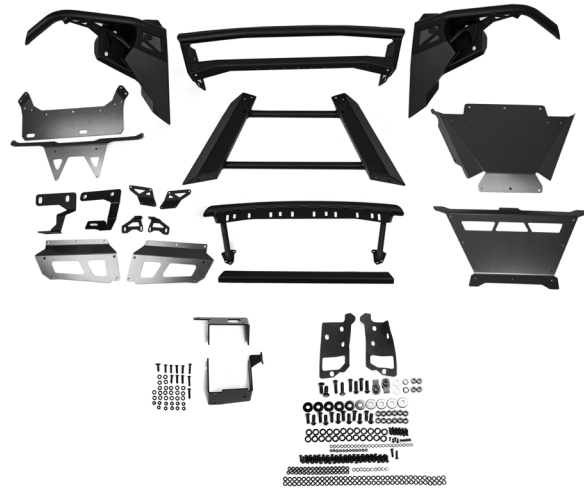


INSTALLATION MANUAL

Begin by unpacking all items and inspecting for missing pieces or damage. If you have any concerns, please contact the company the product was purchased from. Extra hardware may be included with the product.

HARDWARE INCLUDED

- | | |
|--|-------------------------|
| (2) M12x40 Hex bolts | (12) M6x20 Allen bolts |
| (2) M12 Nut clips | (12) M6 Nylock nuts |
| (4) M12x40 Allen bolts | (24) M6 Flat Washers |
| (4) M12 Nylock nuts | (40) M8x20 Allen bolts |
| (10) M12 Flat washers | (2) M8x25 Allen bolts |
| (2) M14x30 Hex bolts | (32) M8 Nylock nuts |
| (2) M14 Flat washers | (10) M8 Lock washers |
| (2) M14 Lock washers | (74) M8 Flat washers |
| (4) M6x14 Countersunk bolt for License plate | (12) M12x30 Allen bolts |
| (4) M6 Cap nuts for LP | (12) M12 Nylock nuts |
| | (24) M12 Flat washers |



STEP 1 | Remove the inner fenders from both sides using a 10mm socket.

Gain access to the bumper wiring harness on the driver side.

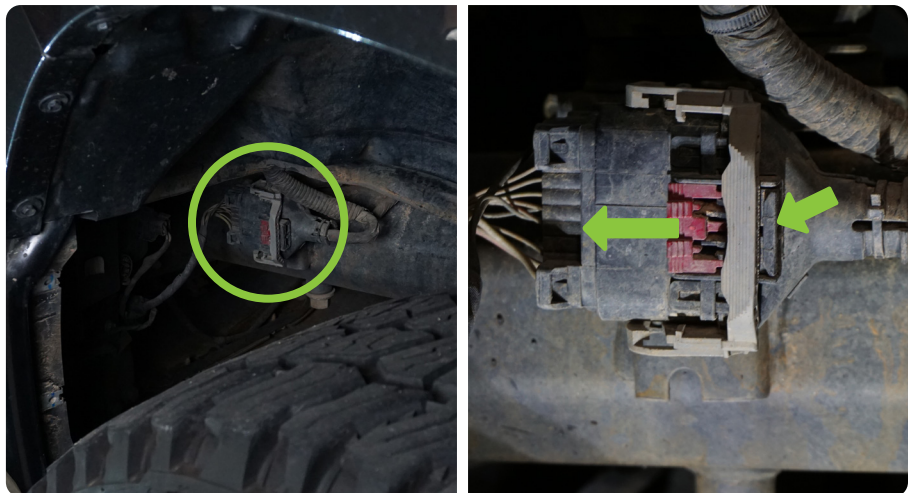
Tech Tip: Turn the wheels in and out for easier access to inner fender screws.



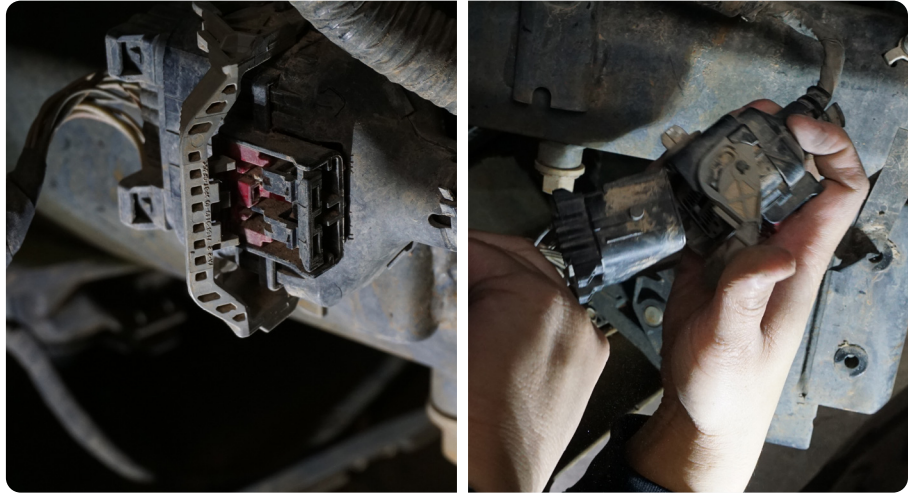
STEP 2 | Disconnect the bumper wiring harness.

Pull the red lock clip back and depress the black push clip.

While depressing the black clip pull back the gray handle to release wiring harness. (See next page)



INSTALLATION MANUAL



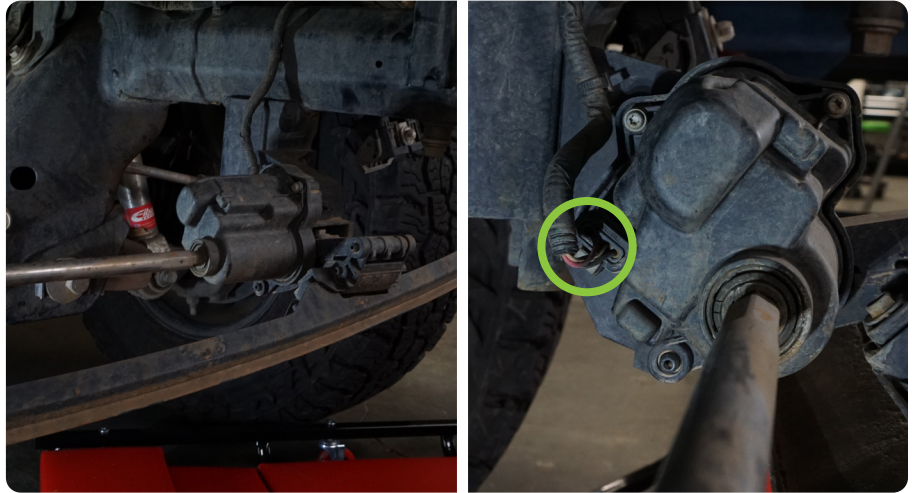
STEP 3 | Using a 18mm socket/wrench, remove the six bumper mounting bolts (3 on each side).

Remove the factory bumper. It may be necessary to angle the bumper slightly as you pull out for the rubber trim to clear the grille, and trim under the headlight.



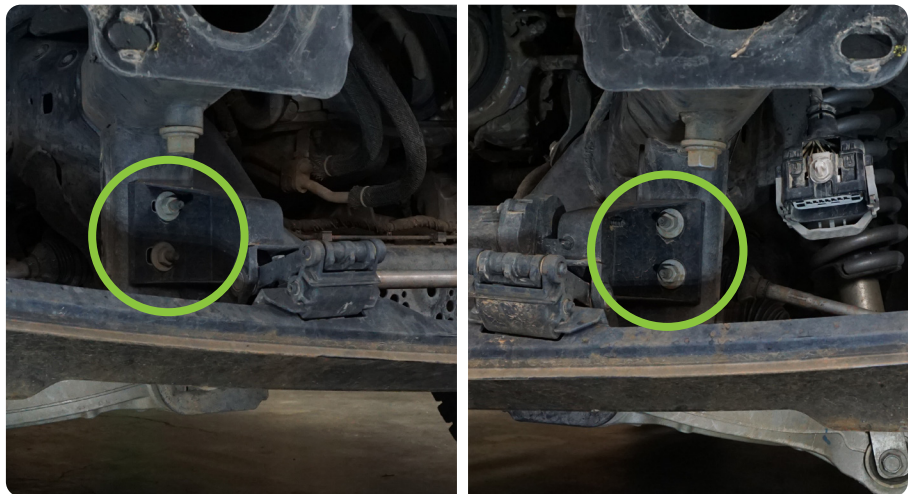
INSTALLATION MANUAL

STEP 4 | Disconnect the air dam motor by pressing the release clip and pulling.



STEP 5 | Use a 13mm socket to remove the (4) air dam mounting bolts.

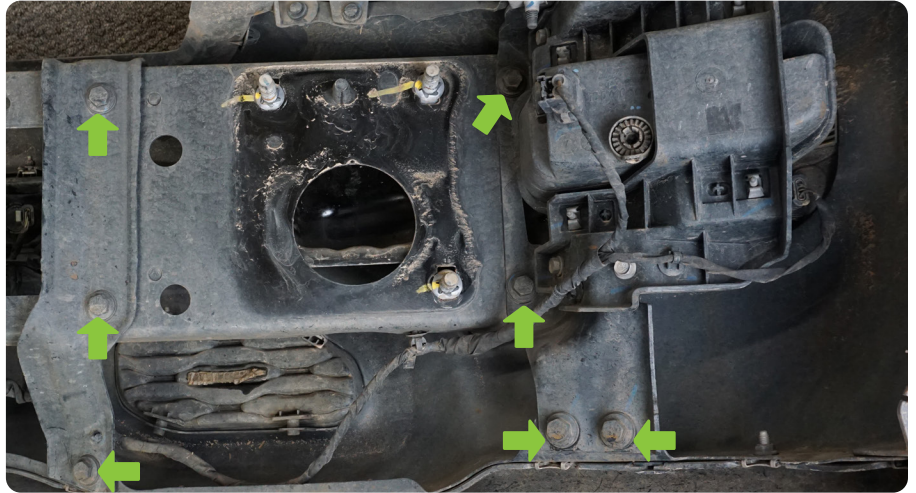
Remove the factory Air Dam.



INSTALLATION MANUAL

STEP 6 | Remove the (14) fog light/ bumper support bolts using a 13mm socket.

Disconnect the fog lights at this time.

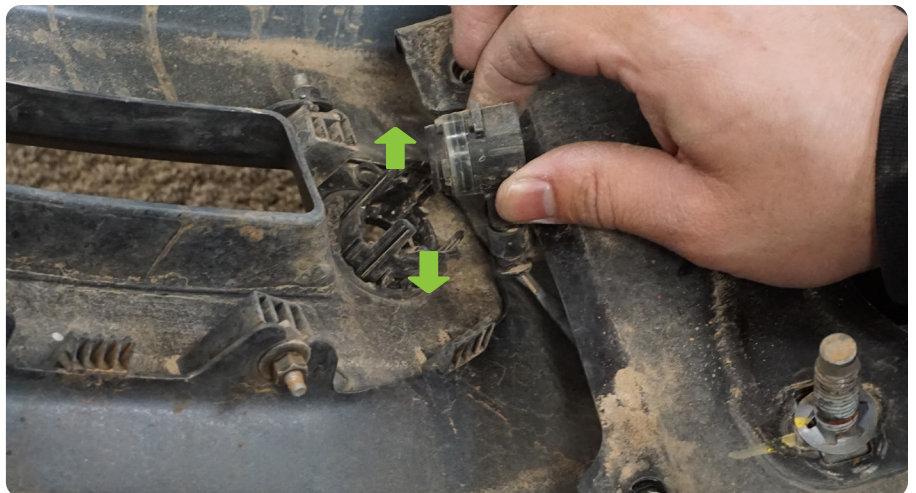


STEP 7 | Remove the (3) additional fog light bolts on the top of the fog light housing and then remove the fog lights.



STEP 8 | Remove the parking sensors from the bumper bezels by gently prying the two tabs outward and pulling up on the sensor.

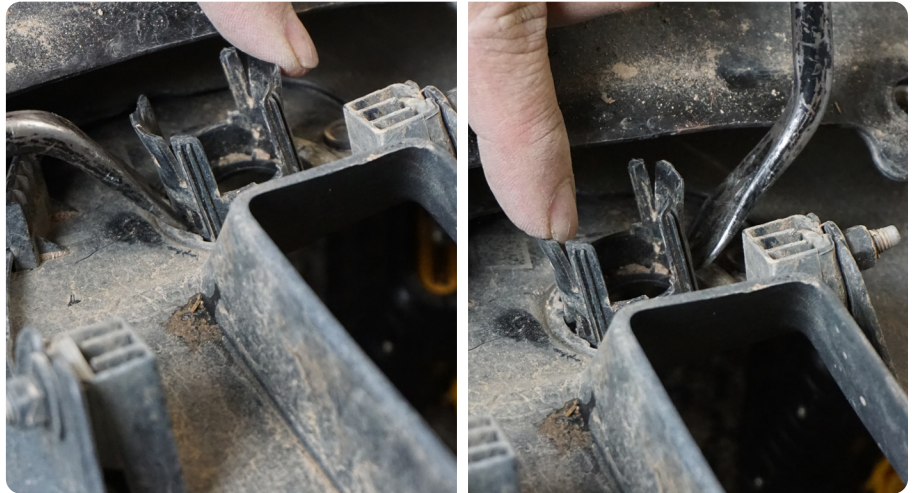
Tech Tip: Slide the bumper center support to the left and right to gain access to all parking sensors.





STEP 9 | Remove the sensor bezels by using a pry tool to press in the locking tabs at the side and pressing the bezel out.

Keep bezels in order as they will be installed in the same position they were removed.



STEP 10 | Use a trim pry tool to remove the bumper wiring harness.



INSTALLATION MANUAL

STEP 11 | BUMPER INSTALL/ASSEMBLY:

Locate the center section and the provided foam, peel the backing on the foam, and place it on the mounting surface on the ends.



STEP 12 | Locate the two wings and loosely (hand tight) mount them to the center section of the bumper using the M12x30 allen head bolts. Use two flat washers and one nylock nut per bolt.



INSTALLATION MANUAL

STEP 13 | While based on preference and what tools are available, on this build we opted to place the nuts inside, and the allen heads exposed.



STEP 14 | Align the top of the wings to the center section of the bumper, using a 19mm and #8 allen head, tighten the wings into place.



INSTALLATION MANUAL

STEP 15 | Mount the skid plate support to the center section of the bumper. Using the provided remaining (4) M12x30 allen heads.

Align the sides of the skid plate support with the side of the bumper center section and tighten using a 19mm wrench and #8 allen.



INSTALLATION MANUAL

STEP 16 | Using the provided M8x20 allen head bolts, two flat washers, and one nut,-attach the support cross bar. Install all bolts by hand before tightening using a #5 and 13mm wrench.

Tech Tip: The orientation does not matter and will vary based on the tools on hand.



STEP 17 | Once secure, locate the lower skid plate and loosely attach using M8x20mm allen head bolts. Do not tighten until all skid plates are mounted loosely.



INSTALLATION MANUAL

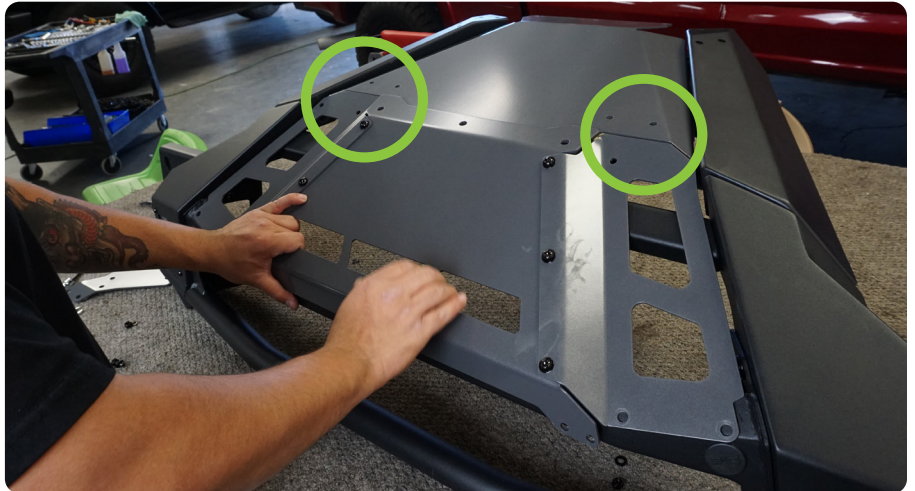
STEP 18 | Assemble the upper skid plate portion by securing them together using the provided M8x20 allen head bolts.



STEP 19 | Secure the upper portion skid plate to the bumper loosely using the same M8x20 bolts.

The (4) top bolts adjacent to the “DV8” logo. These have welded nuts on the backside and the split washer in lieu of the nylock nut. The two inner bolts closest to the logo will use the two M8x25mm bolts in case you choose to use the license plate bracket.

Leave these 4 holes per side open. These will be secured later.



INSTALLATION MANUAL

STEP 20 | Lastly mount the lower skid mount into place using the same hardware as the prior steps.

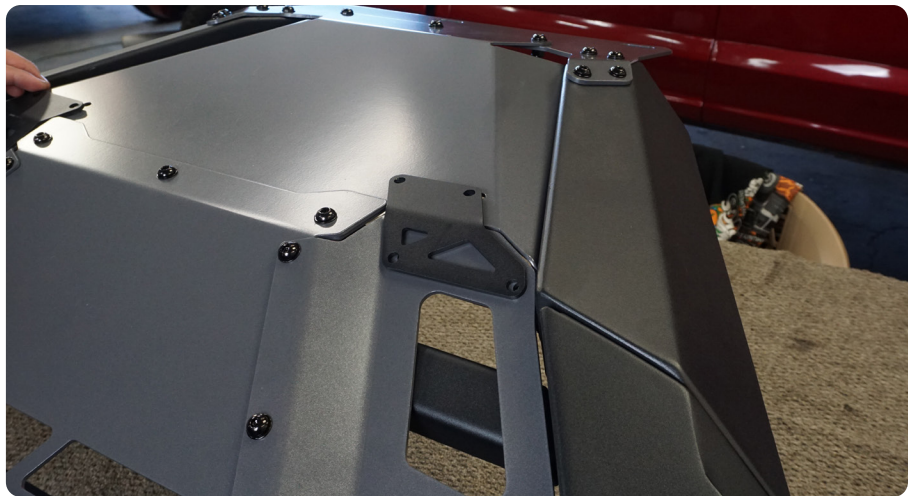


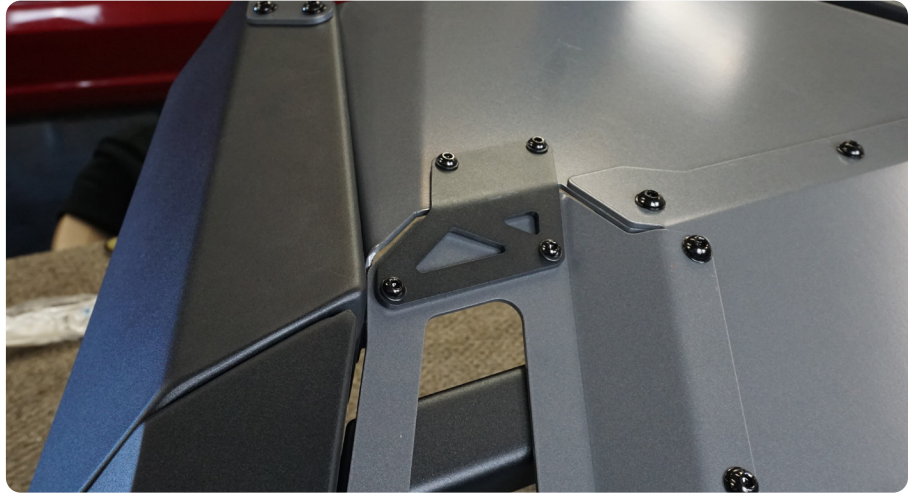
STEP 21 | Once all plates and hardware are in place, secure the hardware using a #5 allen and 13mm wrench.





STEP 22 | Using the provided straps, secure the upper and lower skid plates together using the M8x20 hardware.





STEP 23 | If equipped with sensors, route the harness through the bumper placing each sensor in its relative position.

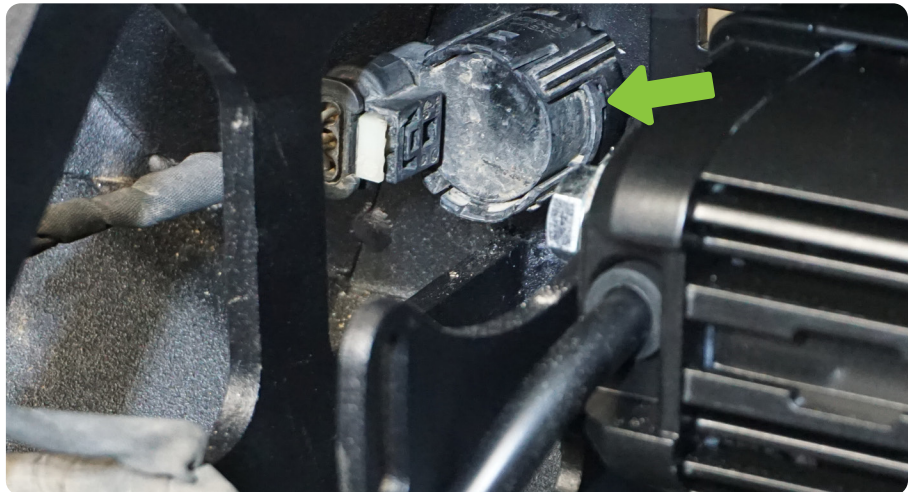


INSTALLATION MANUAL

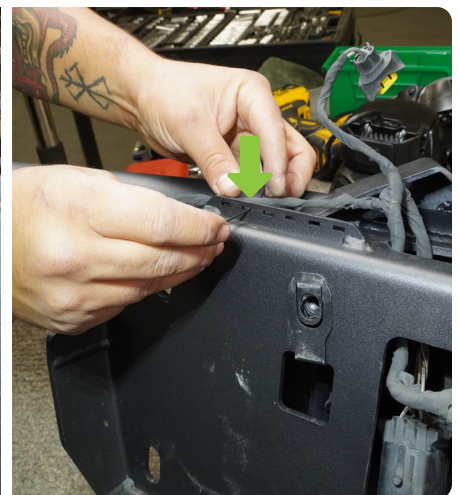
STEP 24 | Install the factory sensor bezel into the DV8 Front Bumper in the same order they were removed.



STEP 25 | Install the parking sensor back into the sensor bezel. Ensure tab on sensor aligns with notch in bezel.



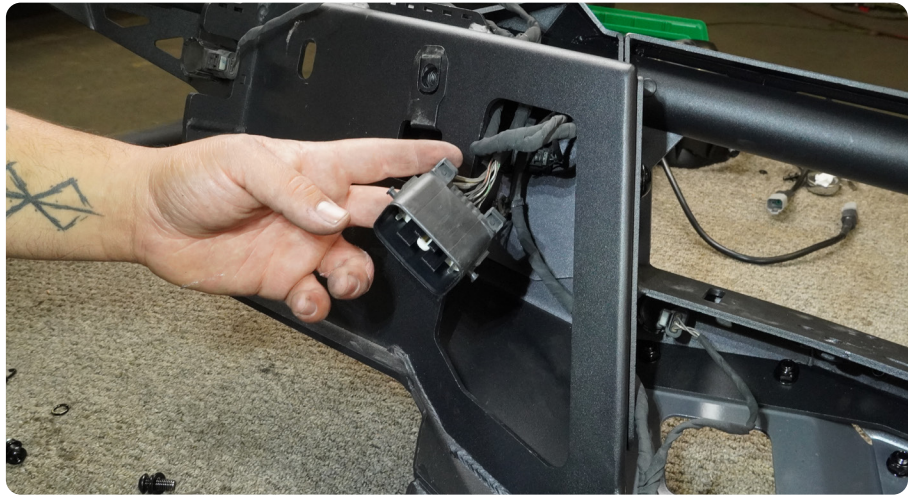
Route the factory wiring harness as shown using provided zip tie tabs to prevent pinching of the sensor harness.



INSTALLATION MANUAL

STEP 26 | Route the harnessed main electrical plug through the cutout in the bumper wing as shown.

Secure any loose wiring harness to the zip-tie tabs.



STEP 27 |
The push/light bar is optional. If you plan on running this, install it now using the M8 hardware and (1) split washer and (1) flat washer.



INSTALLATION MANUAL

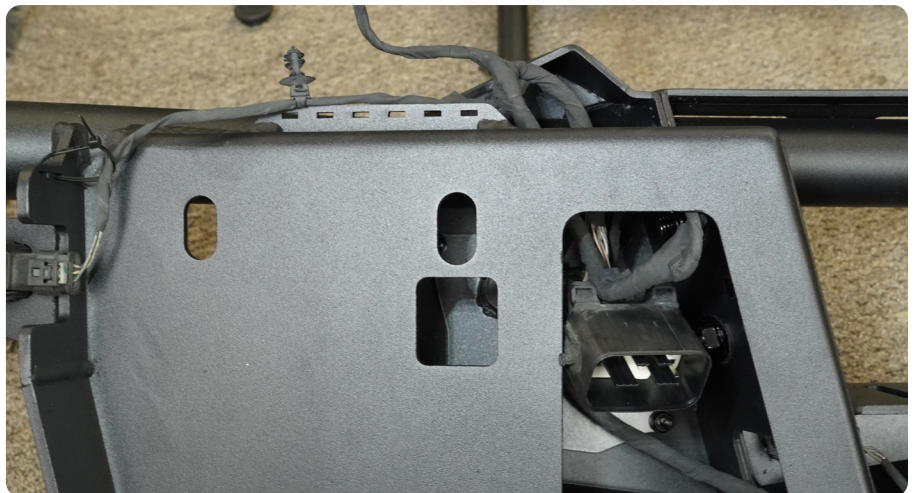
STEP 28 | If running lights, install them now using the hardware provided with the lights. The 20" dual row will use the provided L-brackets.



STEP 29 | The 20" light bracket will mount to the bumper utilizing the provided M6 hardware. Use a #4 and 10mm wrench to secure them into place.



STEP 30 | Install the M12 nut clips onto the bumper as shown. These should "snap" into place.





STEP 31 | With assistance, lift the bumper up to the truck ensuring all wiring is in place and not being pinched.

Install the bottom through bolt using a M12x40 Allen head bolt and the large should M12 flat washer and nylock bolt using a #8 allen and 19mm.



INSTALLATION MANUAL

STEP 32 | Install the bottom through bolt using a M12x40 Allen head bolt and the large should M12 flat washer and nylock bolt using a #8 allen and 19mm.

Tech Tip: We recommend using an extended ball nose #8 allen tool for the M12 through bolt bumper mounting hardware

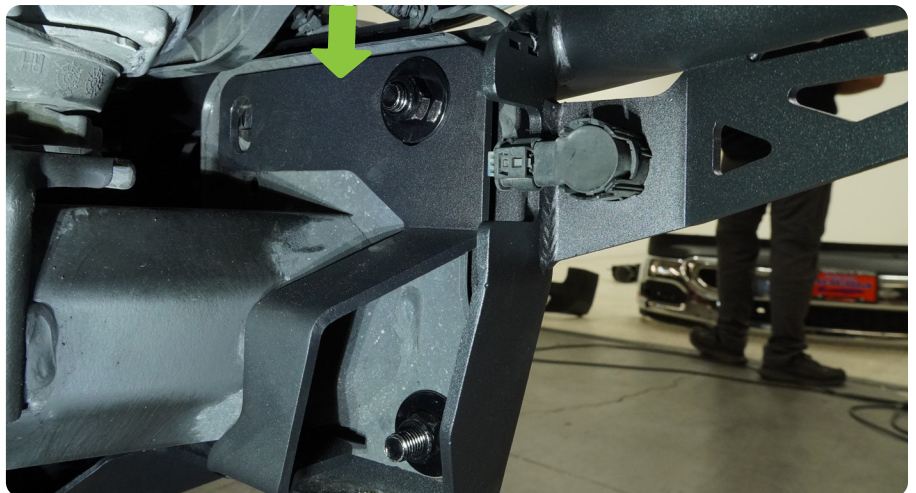


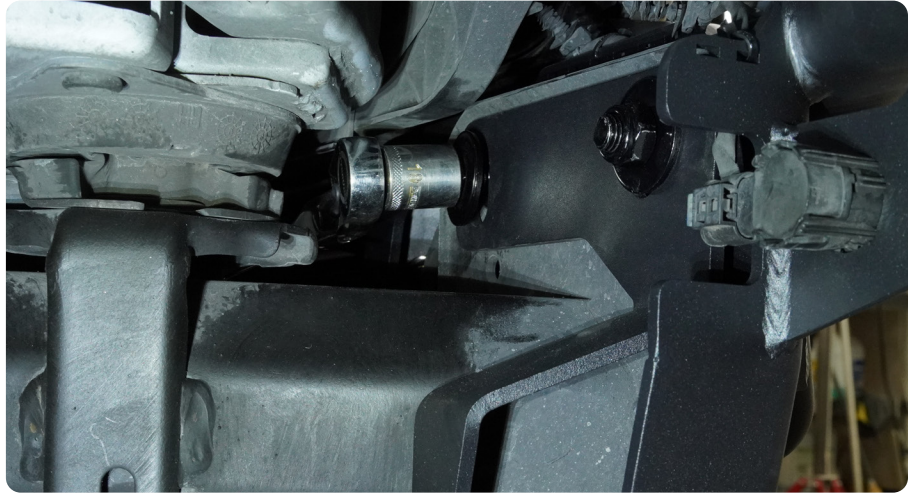
STEP 33 | Once the bottom bolt on both sides is installed, attached the frame support on the backside of the frame mount as shown.

The upper outside bolt (directly above the bolts installed in the previous step), use the other M12 Allen head bolt.

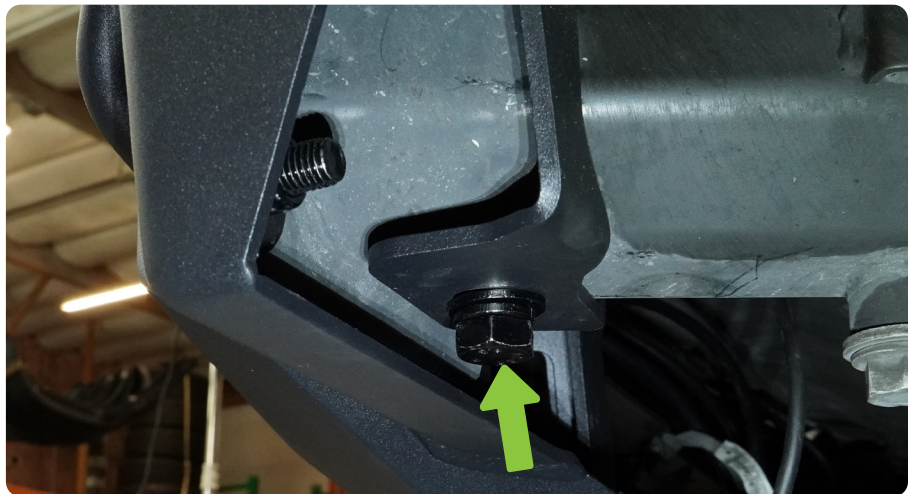
For the inside upper bolt, use the hex head M12 bolt and flat washer.

Keep both bolts loose.





STEP 34 | Using the M14 bolts provided, secure the bracket to the bottom of the frame. Using a 21mm, secure bracket to frame.



STEP 35 | Lift the bumper into place and adjust until the body lines are consistent and tighten all frame bolts with a #8 and 19mm socket.

Secure the lower skid plate using the factory hardware to the cross member as shown.



INSTALLATION MANUAL

STEP 36 | Reconnect sensor harness into truck wire harness.



STEP 37 | Double check all hardware and wiring.

Congratulations, you are done with the install of the 19+ Ram 1500 Tube Front Bumper.

