



**DIRECT-REPLACEMENT  
INSTALLATION GUIDE**

**TOYOTA HILUX (2016-ON)**

---

# PERFORMANCE SERIES 2.5

# PERFORMANCE ELITE SERIES 2.5

---

883-06-235 - Kit: 16-ON Toyota Hilux, w/ UCA, Front, 2.5 Truck PES, R/R, DSC, 2-3" (50-75mm) Lift

883-26-167 - Kit: 16-ON Toyota Hilux, Rear, 2.5 Truck PES, R/R, DSC, 0-2" (0-50mm) Lift

987-02-009 - 16-ON Toyota Hilux, w/ UCA, Front Coilover, 2.5 Truck PS, IFP, 2-3" (50-75mm) Lift

987-24-053 - 16-ON Toyota Hilux, Rear, 2.5 Truck PS, IFP, 0-1" (0-25mm) Lift

987-24-071 - 16-ON Toyota Hilux, Rear, 2.5 Truck PS, IFP, 1-2" (25-50mm) Lift



FOX products are subject to continuous development and improvement. To find the most up to date product information such as color installation manuals, videos, and FAQs please visit:

**<http://ridefox.com/manuals>**

To locate the correct installation manual, use the 8-digit part number found on the end of the packaging box (see illustration below):



# CONTENTS

---

<b>INTRODUCTION</b>	<b>1</b>
<b>SUPPLIED PARTS</b>	<b>2</b>
<b>SAFETY INSTRUCTIONS</b>	<b>3</b>
<b>INSTALLATION GUIDELINES</b>	<b>4</b>
<b>FRONT SHOCK INSTALLATION</b>	<b>5</b>
<b>REAR SHOCK INSTALLATION</b>	<b>10</b>
<b>FOX FACTORY SETTINGS</b>	<b>12</b>
<b>MAINTENANCE</b>	<b>13</b>
<b>WARRANTY INFORMATION</b>	<b>14</b>
<b>CONTACT</b>	<b>15</b>

# INTRODUCTION

---

Thank you for choosing FOX direct-replacement shocks for your vehicle. FOX products are designed, tested, and manufactured by the finest professionals in the industry.

FOX recommends that you become completely familiar with the handling characteristics of your modified vehicle before operating it under rigorous conditions, helping to avoid potential rollover situations and other loss of control events. FOX further recommends that you use appropriate protective equipment at all times when operating your vehicle.

To achieve the best performance and product longevity, periodic service and maintenance is required. Please refer to the Service and Upgrades section for more information.

## **IN THE BOX**

- Front Shocks or Rear Shocks
- Supplied Hardware
- Installation Guide

# SUPPLIED PARTS

SHOCK ASSEMBLY			
FOX PN	DESCRIPTION	QTY	NOTES
987-02-009	FRONT SHOCK	1	Performance Series
987-24-053	REAR SHOCK	1	
987-24-071	REAR SHOCK	1	
883-06-235	FRONT KIT	N/A	Performance Elite Series
983-06-235-L/R	FRONT, LEFT/RIGHT SHOCK	2	
883-26-167	REAR KIT	N/A	
983-26-167-L/R	REAR, LEFT/RIGHT SHOCK	2	

FRONT RESERVOIR BRACKET ASSEMBLY (PERFORMANCE ELITE KITS)			
FOX PN	DESCRIPTION	QTY	NOTES
026-01-330-1	DRIVER SIDE, RESERVOIR MOUNT	1	Brackets mount the front reservoirs to the vehicle.
026-01-330-2	PASSENGER SIDE, RESERVOIR MOUNT	1	
803-02-089	MOUNTING KIT, PERFORMANCE ELITE SERIES	N/A	Each bracket uses two clamps and a clamp uses two screws.
018-01-066	SCREW: 8-32, 3/4"	8	
026-01-167-1	2.5 RESERVOIR CLAMP, TOP	4	
026-01-167-2	2.5 RESERVOIR CLAMP, BOTTOM	4	
INCLUDED IN BOX (PERFORMANCE ELITE KITS)			
FOX PN	DESCRIPTION	QTY	NOTES
026-01-327	SWAY BAR RELOCATION BLOCK	2	
018-04-017-A	SWAY BAR BLOCK BOLTS (3/8-16 x .875)	4	
241-01-127	SKID PLATE SPACERS	7	
018-01-053	SKID PLATE BOLTS (M10 x 1.25 x 40mm)	6	
018-01-071	SKID PLATE BOLTS (M12 x 1.25 x 40mm)	7	

\*Hardware Reference is used throughout the installation manual to provide notation of the supplied kit.

 **WARNING**

# SAFETY INSTRUCTIONS

---

- FOX direct-replacement shocks are designed to fit and allow proper clearance with the stock suspension. If aftermarket suspension components are installed it is the customer's responsibility to ensure that interference between the FOX shocks and other vehicle components does not occur at any point in the shock stroke.
- FOX direct-replacement shocks should always be installed as a set for maximum performance.
- Proper installation and service procedures are essential for the safe and reliable operation of the suspension components, requiring the experience and tools specially designed for this purpose. Installation and maintenance procedures for this product must be performed by a qualified service technician to avoid potentially unsafe vehicle handling characteristics, which may result in **SERIOUS INJURY** or **DEATH**.
- Modifying your vehicle's suspension will change the handling characteristics of your vehicle. Under certain conditions, your modified vehicle may be more susceptible to loss of control or rollover, which can result in **SERIOUS INJURY** or **DEATH**. Thoroughly familiarize yourself with the modified vehicle handling characteristics before any rigorous vehicle operation. Wear protective body gear and a helmet when appropriate. Installation of vehicle roll bars or cage is highly recommended.
- FOX direct-replacement shocks are gas-charged and are highly pressurized. Placing shocks in a vise or clamp, applying heat, or attempting to open or service the shock without the proper tools and training can result in **SERIOUS INJURY** or **DEATH**. Do not attempt to modify, puncture or incinerate a FOX direct-replacement shock absorber.
- Any attempt to misuse, misapply, modify, or tamper with any FOX product voids any warranty and may result in **SERIOUS INJURY** or **DEATH**.

 **WARNING**

# INSTALLATION GUIDELINES

---

- Always use a chassis lift for the installation of shocks, and make certain that the raised vehicle is securely attached to the lift to prevent the vehicle from slipping, falling, or moving during the installation process.
- DO NOT install any FOX product without the necessary special tools, expertise and chassis lift or you will subject yourself to the risk of SERIOUS INJURY or DEATH. If you elect to not use a chassis lift (which may result in SERIOUS INJURY or DEATH), ensure that the vehicle is: (1) on level ground, (2) that all tires on the ground during installation are blocked to prevent vehicle movement, (3) that at least two tires are on the ground at all times, and (4) that adequately secured jack stands are used to support the vehicle. NEVER get under the vehicle until you have checked to ensure that the vehicle will be stable during installation.
- FOX direct-replacement shocks are designed to fit your vehicle's shock mounts without modification except the reservoir placement on specific models and applications.
- If a preload adjustment is necessary for your application DO NOT adjust preload with the coil-over on the vehicle. Remove the coil-over from the vehicle and use a spring compressor to remove the lower spring hardware and spring. Once the spring is removed, you can adjust the preload ring.

# FRONT SHOCK INSTALLATION

## PREPARATION

1. Please read the INSTALLATION GUIDELINES on page 3 for instructions on how to properly lift and secure the vehicle.
2. Record the front vehicle ride height to ensure the proper lift is attained after kit is installed. READ INSTALLATION GUIDELINES ON HOW TO PROPERLY ADJUST PRELOAD.

**NOTICE:** Medium-strength thread-lock is recommended on all bolts.

**NOTICE:** The spring preload is set by FOX to last the life of the product. If any preload is added, the provided bumpstop spacer must be installed to prevent coilbind and to preserve spring life.

## STOCK SHOCK REMOVAL

1. Remove both front wheels from the vehicle.
2. Disconnect both outer tie rod ends at the spindle steering arm for removal/installation clearance.
3. Disconnect the sway bar from both spindles (Fig. 1).
4. **On Performance Elite 2.5 Series installation:** Remove the (4) bolts that secure the sway bar to the vehicle frame. Move the sway bar forward to allow clearance for shock removal.

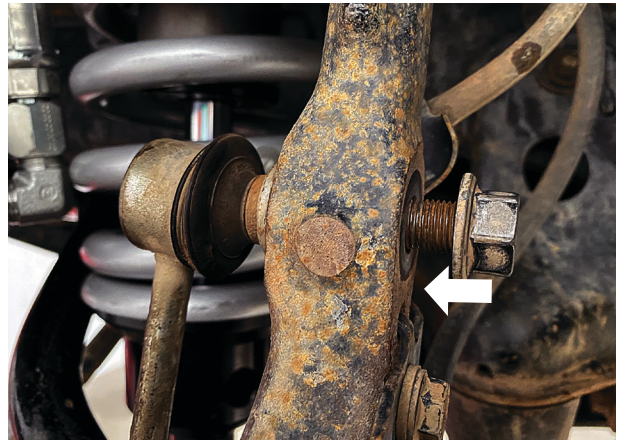


Fig. 1: Loosened sway bar bolt.

- Remove the (3) top nuts that secure the stock shock assembly to the vehicle. Be extremely careful NOT to remove the center nut (Fig. 2).

**⚠ WARNING:** DO NOT remove the center nut. Removing the center nut will release the spring from the stock assembly and could result in SERIOUS INJURY or DEATH.

- Remove the (1) bolt connecting the shock to the lower control arm.  
**NOTICE:** Do not discard bolt and nut, as it will be used with your new FOX coil-over assembly.
- Remove the stock shock assembly. You may need to use a pry bar to pull on the upper control arm and lower the suspension to allow the removal and installation of your shock assembly.  
**NOTICE:** Be careful not to damage any brake lines or electrical wires.



Fig. 2: DO NOT remove the center nut. Remove the top hat nuts (arrows).

### FOX SHOCK INSTALL

- Install your aftermarket upper control arm (if applicable).
- Install the new FOX coil-over assembly. With remote reservoir models, make sure that the hoses are facing outward and towards the front of the vehicle (Fig. 3). Connect the top shock hat to the vehicle with the provided washers and nuts. Tighten all three nuts to 24 ft-lbs.

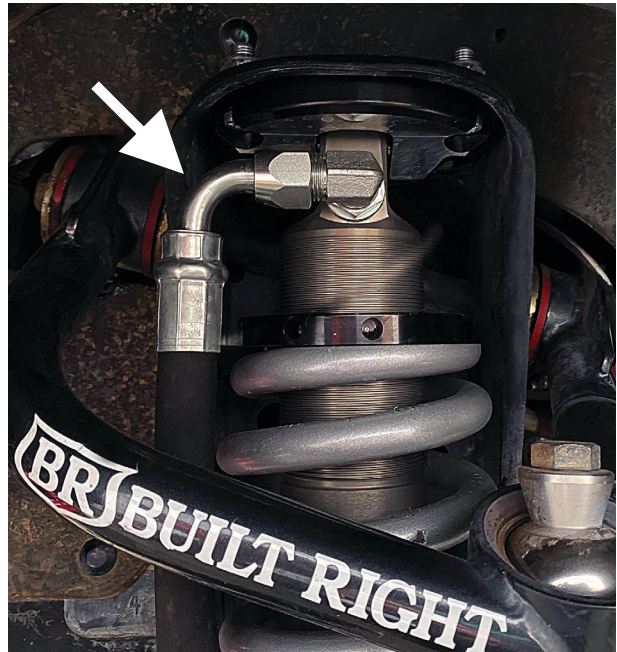


Fig. 3: Reservoir hose orientation.

3. Connect the shock to the lower control arm using stock bolt and nut (Fig. 4). Torque to OE specifications.
4. **Performance Elite 2.5 Series coil-over shocks:** install new sway bar relocation spacers to existing sway bar mounting location with the stock bolts (Fig. 5 and Fig. 6).



Fig. 4: Installed lower shock bolt.



Fig. 5: Sway bar relocation spacer (bottom view).

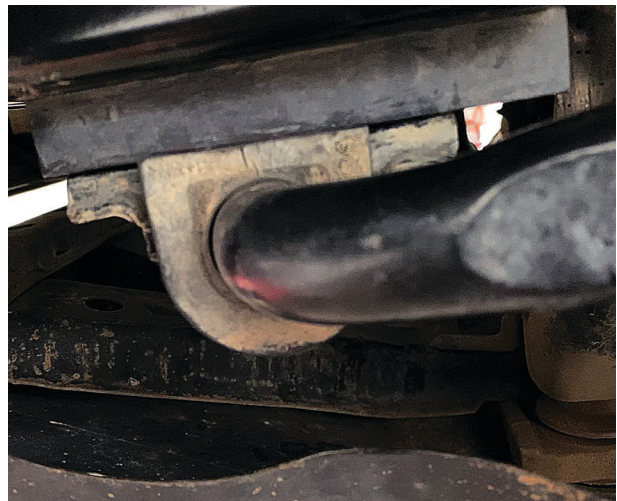


Fig. 6: Sway bar relocation spacer (side view).

5. Some vehicle models may require removal of skid plate braces for installation of spacers for sway bar clearance. Check to see if there is a clearance issue (Fig. 7). If there is a clearance issue between the sway bar and skid plate braces, install the supplied spacers between the vehicle frame and braces as shown (Fig. 8) and secure using supplied longer bolts. Torque to OE specifications.



Fig. 7: Cleared sway bar.

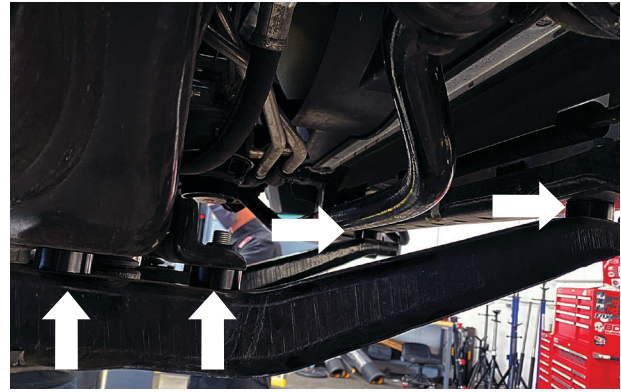


Fig. 8: Installed skid plate brace spacers.

6. On remote reservoir models, mount the reservoir onto the reservoir bracket with supplied reservoir clamps. Utilize the slots in the bracket to locate the clamps. **ONLY** feed the clamp through the bracket's lower slot. Tighten the clamp to 50% when the reservoir is centered with proper hose positioning. Slide the bottom half of the clamp into position for the second clamp assembly. Tighten both screws on each clamp assembly evenly until tight. Complete the installation and torque to 19 in-lbs (Fig. 9).



Fig. 9: Mounted reservoir.

7. **Remote reservoir models:** Install the bracket between the new sway bar relocation spacer and vehicle frame, orient the bracket with the mounting arm toward the rear of the vehicle (Fig. 10). Slide the bracket against the side of the vehicle frame and torque to OE specifications.
8. Connect the sway bar to both spindles and torque to OE specifications.
9. Reinstall the outer tire rod ends and torque to OE specifications.
10. The finished shock assembly should appear as in (Fig. 11).

#### CHECK AND FINAL DETAILS

1. Reinstall both front wheels and torque to OEM specifications.
2. Set the vehicle back on the ground and drive back and forth several feet to allow the suspension to settle. Now measure ride height and adjust if necessary. READ INSTALLATION GUIDELINES ON HOW TO PROPERLY ADJUST PRELOAD.
3. Check that the suspension has proper clearance by steering completely in both directions.
4. Measure the vehicle's ride height and adjust if necessary.
5. It is highly recommended that you have your wheel alignment checked by a professional mechanic.

**⚠ WARNING:** Failure to maintain proper wheel alignment will result in premature tire wear and changes in vehicle handling.



Fig. 10: Front reservoir bracket orientation.



Fig. 11: Finished shock assembly.

# REAR SHOCK INSTALLATION

## PREPARATION

1. Please read the INSTALLATION GUIDELINES on page 3 for instructions on how to properly lift and secure the vehicle.
2. Record the front vehicle ride height to ensure the proper lift is attained after kit is installed. READ INSTALLATION GUIDELINES ON HOW TO PROPERLY ADJUST PRELOAD.

**NOTICE:** Medium-strength thread-lock is recommended on all bolts.

**NOTICE:** The spring preload is set by FOX to last the life of the product. If any preload is added, the provided bumpstop spacer must be installed to prevent coilbind and to preserve spring life.

## STOCK SHOCK REMOVAL

1. Remove both rear wheels from the vehicle.
2. Remove the stock shocks according to the manufacturer's instructions.

**⚠ WARNING:** Ensure the axle is supported when removing rear shocks (Fig. 12).

**NOTICE:** Do not discard the OEM fasteners, as they will be used with your new FOX shocks mechanic.



Fig. 12: Axle jack supporting the axle.

## FOX SHOCK INSTALL

1. Connect the FOX shock to the top vehicle mount. Hand tighten the fastener.  
**Remote reservoir models:** make sure the eyelets are connected to the frame and the shock bodies are connected to the axle. Reservoirs should be facing toward the REAR of the vehicle, with the hoses facing towards the center of the vehicle (Fig. 13).
2. Connect the FOX shock to the lower mount using the OE fastener. Torque both the upper and lower fasteners to OE specifications.

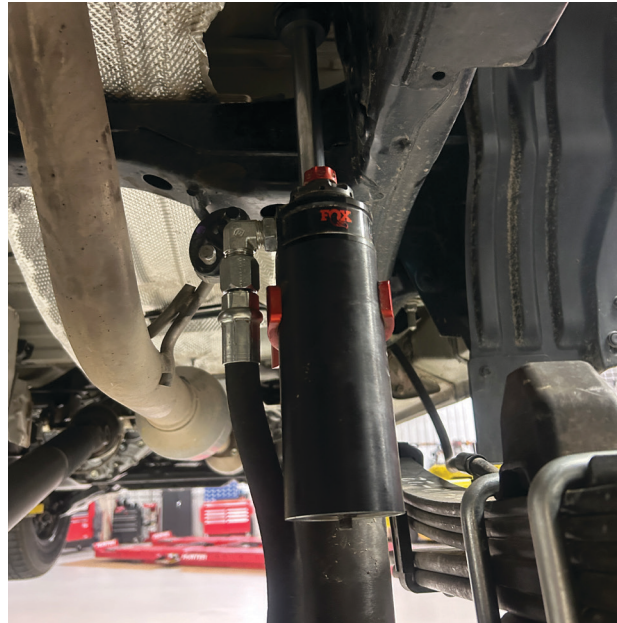
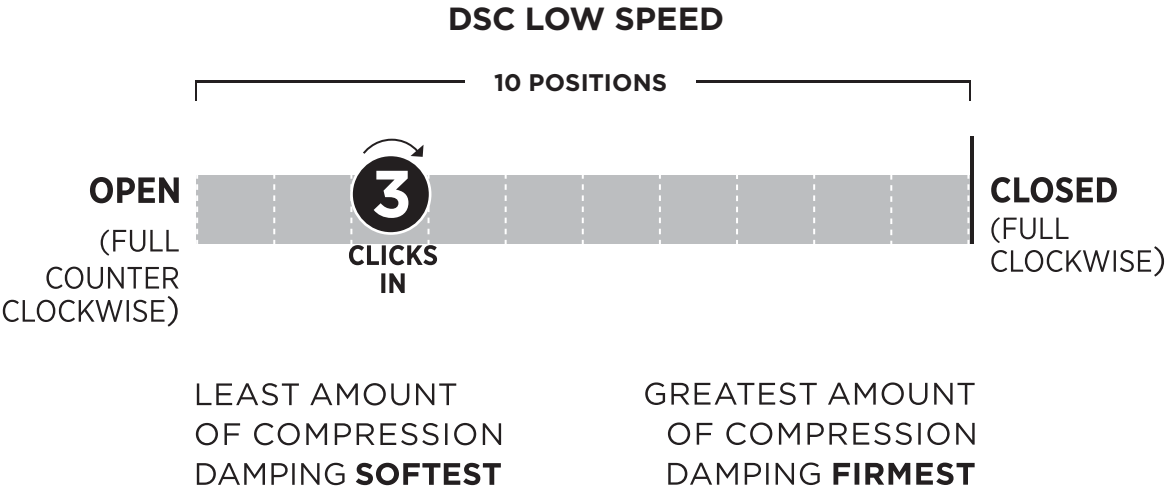
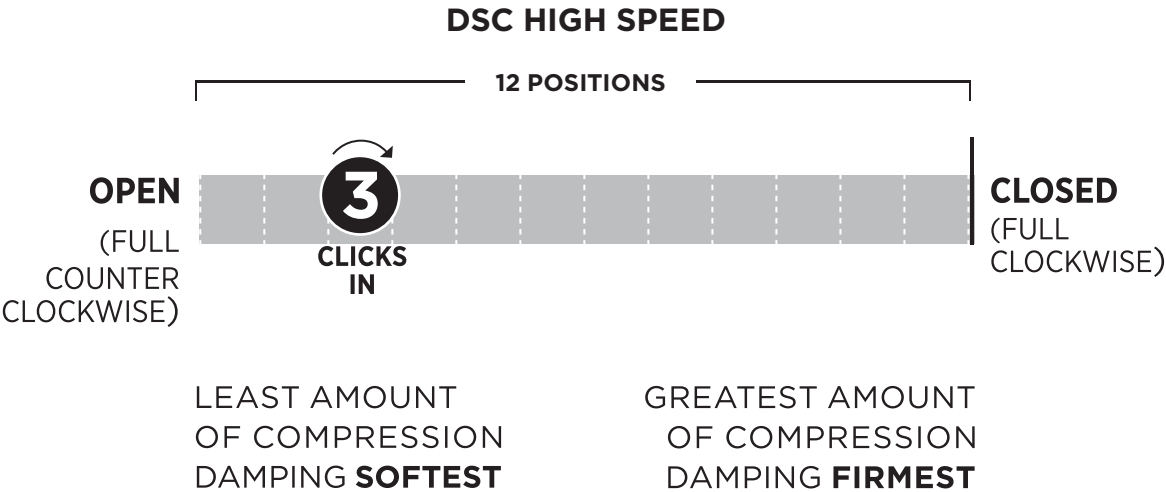


Fig. 13: Passenger side shock assembly.

## CHECK AND FINAL DETAILS

1. Reinstall both rear wheels and torque to OEM specifications.
  2. Set the vehicle back on the ground and drive back and forth several feet to allow the suspension to settle. Now measure ride height and adjust if necessary. READ INSTALLATION GUIDELINES ON HOW TO PROPERLY ADJUST PRELOAD.
  3. Check that the suspension has proper clearance by steering completely in both directions.
  4. Measure the vehicle's ride height and adjust if necessary.
  5. It is highly recommended that you have your wheel alignment checked by a professional mechanic.
- ⚠️ WARNING:** Failure to maintain proper wheel alignment will result in premature tire wear and changes in vehicle handling.

# FOX FACTORY SETTINGS



# MAINTENANCE

---

PROPER INSPECTION AND MAINTENANCE IS ESSENTIAL TO MAINTAIN THE PERFORMANCE AND RELIABILITY OF YOUR SHOCK ABSORBERS.

To avoid corrosion, you should keep the shocks and springs clean, free of dirt and moisture. The wiper seal will clean deposits from the shaft, but the shock won't necessarily fully compress every time. This means you could accumulate dirt at the bottom of the shaft and underneath the jounce bumper. Make sure you clean these areas completely to prevent shaft corrosion. Avoid using a high-pressure washer near the shaft seals or adjusters, as this could drive dirt inside the shock.

Make sure the ends of the spring and shock threads are clean and free of dirt before adjusting the preload ring. This will make the adjustment easier and reduce wear.

Ideally, the shocks should be clean around the adjusters. Use a small amount of contact cleaner or brake cleaner before making adjustments will keep these parts clean and operating smoothly for years

**NOTICE:** Keep the shock and spring clean and free of dirt or water to avoid corrosion. Keep the shock shaft clean and free of mud. Avoid using a high-pressure washer near the shaft seals and adjusters. Before adjusting preload or the crossover ring, clean the threads of the shock body for easier adjustment and mitigating wear.

## FOX SERVICE AND UPGRADES

HAVE YOUR FOX SHOCKS SERVICED BY FOX TECHNICIANS. CALL OUR OFF-ROAD AND TRUCK SERVICE CENTER AT 619.768.1800 TO GO OVER THE SERVICE AND UPGRADE OPTIONS AVAILABLE FOR YOUR PRODUCT. ONCE YOU'VE SETUP YOUR SERVICE AND/OR UPGRADES YOU WILL RECEIVE A RETURN AUTHORIZATION NUMBER AND SHIPPING INSTRUCTIONS.

## COMPLETE SERVICES

100% street use: every 50,000 miles  
50% street/ 50% off-road use: Every 10,000 miles  
100% off-road use: Every 1,000 miles

## SERVICE MENUS AND PRICING

visit [ridefox.com/service](http://ridefox.com/service)



**WARNING: Cancer and Reproductive Harm –**  
[www.P65Warnings.ca.gov](http://www.P65Warnings.ca.gov)

# WARRANTY INFORMATION

---

## **FOX LIMITED WARRANTY**

FOX Factory, Inc., a California corporation having an office at 750 Vernon Way, Suite 101, El Cajon, CA 92020 (“FOX”), makes the following LIMITED WARRANTY with respect to its suspension products:  
**LIMITED ONE (1) YEAR WARRANTY ON SUSPENSION PRODUCTS.**

Subject to the limitations, terms and conditions hereof, FOX warrants, to the original retail owner of each new FOX suspension product, that the FOX suspension product, when new, is free from defects in materials and workmanship. Unless otherwise required by law, this warranty expires one (1) year from the date of the original FOX suspension product retail purchase from an authorized FOX dealer or from a FOX authorized Original Equipment Manufacturer where FOX suspension is included as original equipment on a purchased vehicle. If law requires a warranty duration of greater than one (1) year, then, subject to the other provisions hereof, this warranty will expire at the end of the minimum warranty period required by such law.

## **TERMS OF WARRANTY**

This warranty is conditioned on the FOX suspension product being operated under normal conditions and properly maintained as specified by FOX. This warranty is only applicable to FOX suspensions purchased new from an authorized FOX source and is made only to the original retail owner of the new FOX suspension product and is not transferable to subsequent owners. This warranty is void if the FOX suspension product is subjected to abuse, neglect, improper or unauthorized repair, improper or unauthorized service or maintenance, alteration, modification, accident or other abnormal, excessive, or improper use.

Should it be determined by FOX in its sole and final discretion, that a FOX suspension product is covered by this warranty, it will be repaired or replaced, by a comparable model, at FOX’s sole option, which will be conclusive and binding. **THIS IS THE EXCLUSIVE REMEDY UNDER THIS WARRANTY. ANY AND ALL OTHER REMEDIES AND DAMAGES THAT MAY OTHERWISE BE APPLICABLE ARE EXCLUDED, INCLUDING, BUT NOT LIMITED TO, INCIDENTAL OR CONSEQUENTIAL DAMAGES OR PUNITIVE DAMAGES.**

This limited warranty does not apply to normal wear and tear, malfunctions or failures that result from abuse, improper assembly, neglect, alteration, improper maintenance, crash, misuse or collision. This limited warranty gives the consumer specific legal rights. The consumer may also have other legal rights which vary from state to state or country to country. Some states and countries do not allow the exclusion or limitation of incidental or consequential damages or warranties, and if dictated by law the above limitations or exclusions may not apply to you. If it is determined by a court of competent jurisdiction that a certain provision of this limited warranty does not apply, such determination shall not affect any other provision of this limited warranty and all other provisions shall remain in full effect.

**THIS IS THE ONLY WARRANTY MADE BY FOX ON ITS SUSPENSION PRODUCTS AND COMPONENTS, AND THERE ARE NO WARRANTIES WHICH EXTEND BEYOND THE DESCRIPTION HEREIN. ANY WARRANTIES THAT MAY OTHERWISE BE IMPLIED BY LAW INCLUDING, BUT NOT LIMITED TO, ANY IMPLIED WARRANTY OF MERCHANTABILITY OR FITNESS FOR A PARTICULAR PURPOSE ARE EXCLUDED.**

# CONTACT

---

## **FOX RACING SHOX**

A DIVISION OF FOX FACTORY INC.

### **SALES**

750 Vernon Way, Suite 101

El Cajon, CA 92020

1.800.FOX.SHOX (1.800.369.7469)

[orsales@ridefox.com](mailto:orsales@ridefox.com)

### **SERVICE**

13461 Dogwood Drive

Baxter, MN 56425

1.800.FOX.SHOX (1.800.369.7469)

[servicemn@ridefox.com](mailto:servicemn@ridefox.com)

