

# INSTALLATION GUIDE

Direct-Fit Oil Cooler Kit fits 2023+ Honda Civic Type-R  
SKU: MMOC-CTR-23T

## TABLE OF CONTENTS

1. RESOURCES & CONTACT INFO
2. EXPLODED VIEW
3. IMPORTANT SAFETY INFORMATION  
INSTALL TIME & DIFFICULTY  
REQUIRED TOOLS
10. DISPOSAL & WARRANTY INFORMATION

## RESOURCES & CONTACT



**CALL 1.877.466.4744**

CUSTOMER SERVICE HOURS: MON-FRI 9:00AM-7:00PM EST



**@MISHIMOTO**



**@GOMISHIMOTO**



**MISHIMOTO**



**@MISHIMOTO**

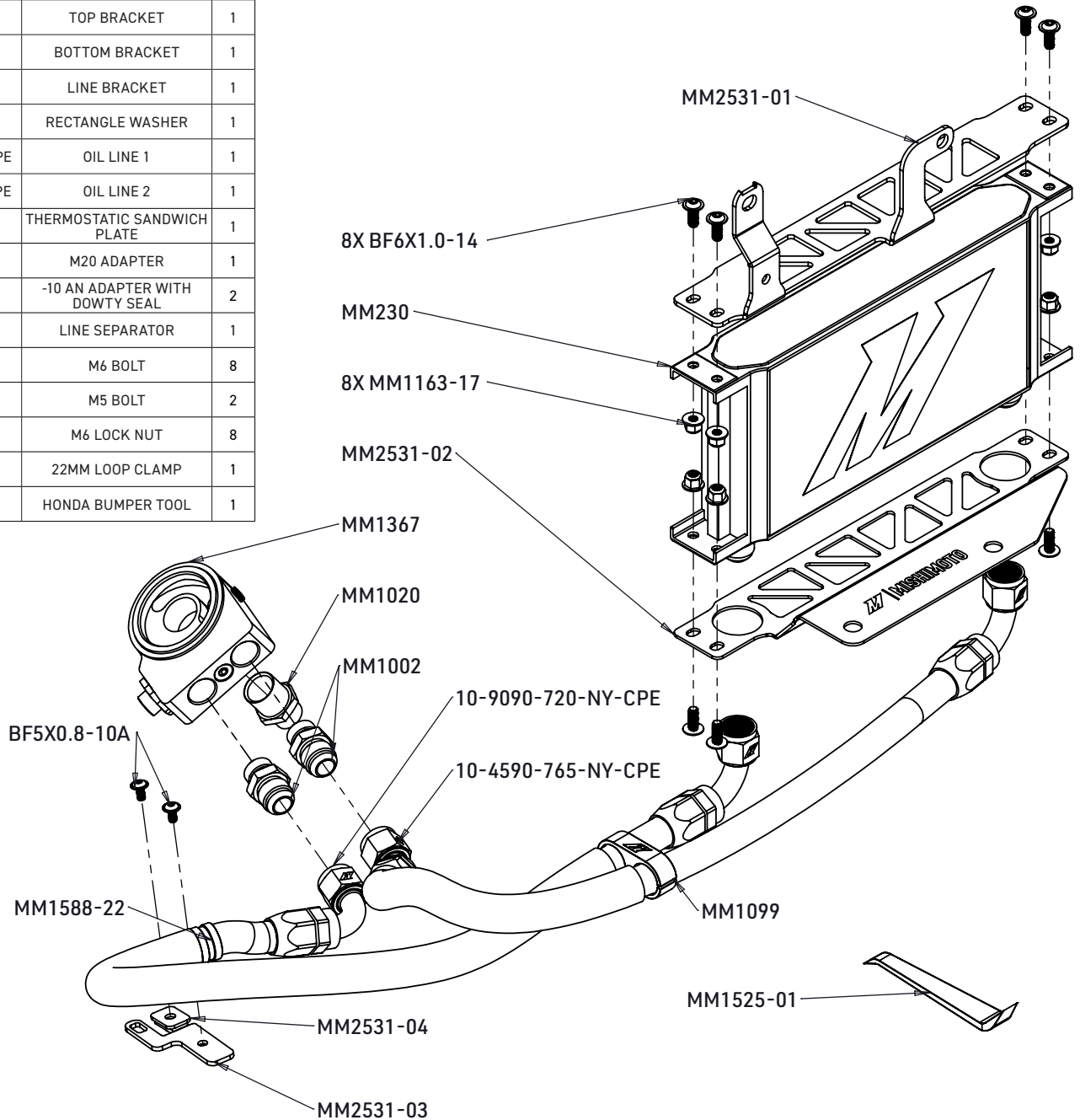


**ENGINEERING BLOG**

[WWW.MISHIMOTO.COM/ENGINEERING](http://WWW.MISHIMOTO.COM/ENGINEERING)

**PARTS BREAKDOWN**

PART NUMBER	DESCRIPTION	QTY
MM230	19 ROW OIL COOLER	1
MM2531-01	TOP BRACKET	1
MM2531-02	BOTTOM BRACKET	1
MM2531-03	LINE BRACKET	1
MM2531-04	RECTANGLE WASHER	1
10-9090-720-NY-CPE	OIL LINE 1	1
10-4590-765-NY-CPE	OIL LINE 2	1
MM1367	THERMOSTATIC SANDWICH PLATE	1
MM1020	M20 ADAPTER	1
MM1002	-10 AN ADAPTER WITH DOWTY SEAL	2
MM1099	LINE SEPARATOR	1
BF6X1.0-14	M6 BOLT	8
BF5X0.8-10A	M5 BOLT	2
MM1163-17	M6 LOCK NUT	8
MM1588-22	22MM LOOP CLAMP	1
MM1525-01	HONDA BUMPER TOOL	1



For questions or assistance with your Mishimoto product, contact us at [1.877.GOMISHI](tel:1877GOMISHI) or [SUPPORT@MISHIMOTO.COM](mailto:SUPPORT@MISHIMOTO.COM)

## IMPORTANT SAFETY INFORMATION

- › Mishimoto recommends you use safety glasses and protective gloves during the installation of our products
- › Raise vehicle only on jack stands or on a vehicle lift
- › Allow vehicle to cool completely prior to attempting installation
- › Do not run the engine or drive the vehicle while overheating; serious damage can occur
- › Please dispose of any liquids properly
- › Mishimoto is not responsible for any vehicle damage or personal injury due to installation errors, misuse, or removal of Mishimoto products
- › If you need any assistance while installing our products, reach out to our Customer Service Team at 1-877-GOMISHI

## REQUIRED TOOLS

1/4" DRIVE RATCHETING WRENCH	FLAT HEAD SCREW DRIVER
1/4" DRIVE EXTENSIONS (3" & 6")	PUSH CLIP PLIERS
1/4" DRIVE 10MM & 12MM SOCKETS	BUCKET OR OTHER RECEPTACLE TO COLLECT OIL
1/4" DRIVE TORQUE WRENCH	ENGINE OIL(ADDED CAPACITY IS APPROX. 1QUART)
1/2" DRIVE RATCHETING WRENCH	PAINTERS TAPE
27MM 1/2" DRIVE SOCKET	10AN WRENCH OR 1" WRENCH
3, 4, AND 5MM ALLEN KEYS &/OR ALLEN KEY SOCKETS	CIVIC BUMPER TOOL (INCLUDED)
PICK TOOL(S)	
PHILLIPS HEAD SCREW DRIVER	

**INSTALL TIME: 2-3 HOURS**

**INSTALL DIFFICULTY:** 

## INSTALLATION INSTRUCTIONS

1. Allow the vehicle to cool completely. Raise the vehicle on a lift or jack stands.
2. Remove the 10x push clips that secure the top of the bumper to the vehicle. There are 2x small clips underneath the weather stripping on each side as shown. The clip covered by an X does not need to be removed.

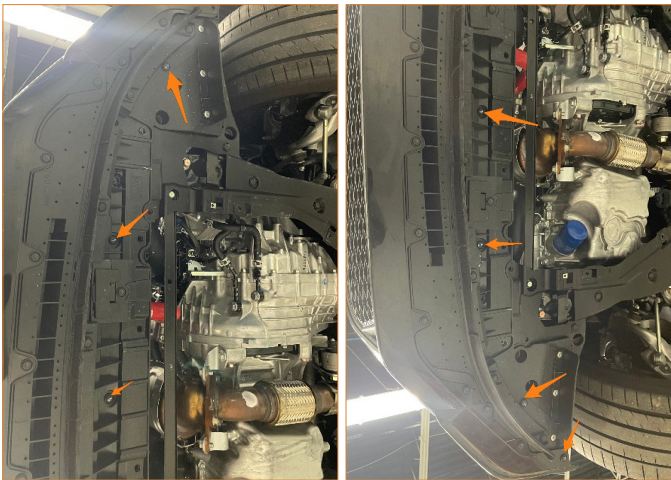
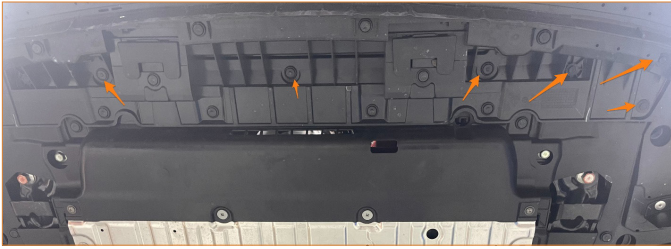


3. Remove the 4x push clips, 4x Phillips head screws (2x black screws near the front and 2x silver screws near the rear), and 4x quarter turn flat head fasteners and remove the vehicle undertray.

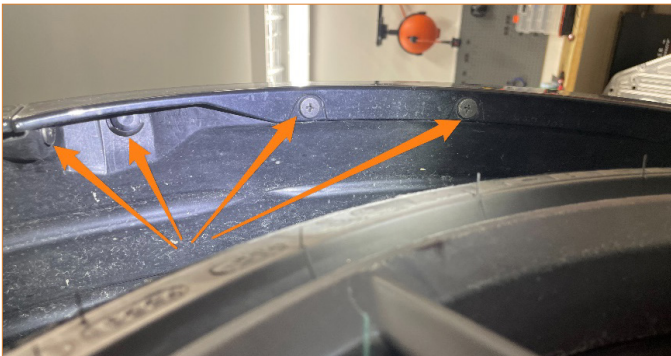


Continued on next page

**4.** Remove the 6x 10mm bolts securing the bottom of the bumper to the vehicle. Then remove the 1x Phillips head screw and the remaining 7x pop clips. Only the pop clips that have arrows need to be removed.



**5.** In the front of the passenger side wheel well, remove 3x Phillips head screws and 1x push clip. Repeat for the driver's side.



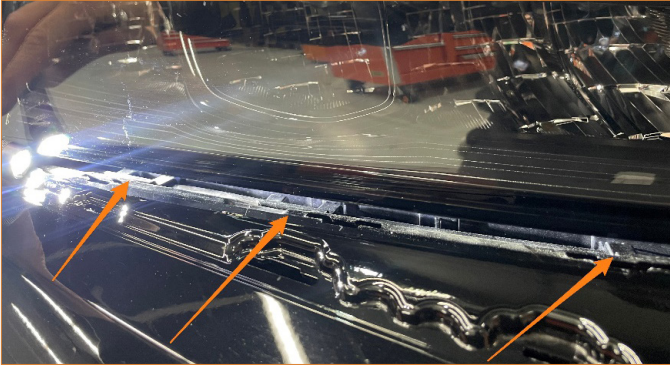
**6.** With the included trim tool, carefully pry up on the trim piece underneath the headlight and remove it from the vehicle. Repeat on the other side. (Refer to photos on right)



**7.** Apply painter's tape to the bumper, fender, and headlight where they meet to prevent them from touching and scratching while the bumper is being removed and re-installed. Then, pry the bumper away from the fender starting from the outside, both next to the headlight and on top of the headlight. Then, using the included orange bumper tool, pry up on the tabs underneath the headlight, starting on the outside, and moving towards the center of the vehicle. Repeat on the other side and the bumper should be free to remove from the vehicle. This step may require a second person to ensure the bumper doesn't fall off of the vehicle and become damaged.



Continued on next page

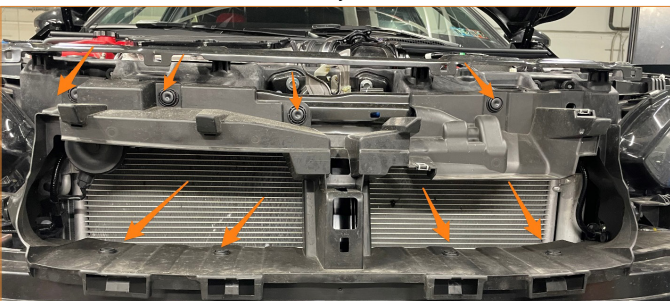


**8.** Underneath the vehicle, remove the oil filter and let any oil drain into an appropriate container.

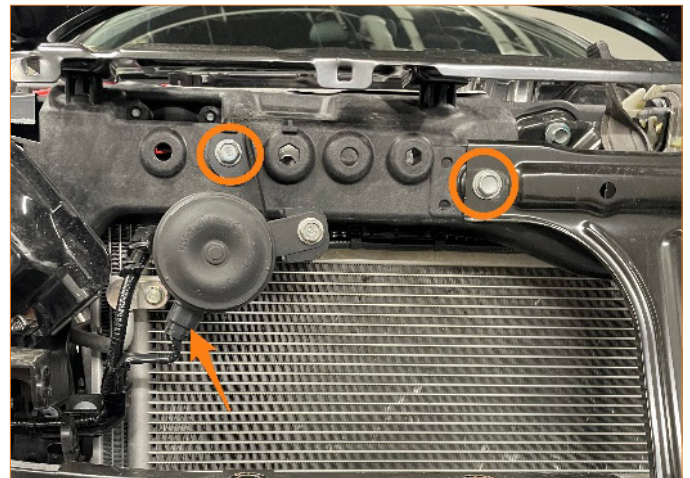
**9.** While the oil is draining, remove the 2x Phillip head screws and 1x push clip securing the intake duct to the vehicle.



**10.** Remove the remaining push clips that secure the main duct to the vehicle and remove them from the vehicle. 4x push clips are on the sides on the inside of the duct that are easy to miss.



**11.** Remove the 1x 12mm bolt and electrical connector securing the horn assembly to the vehicle. Then, remove the adjacent 12mm bolt holding the bumper bracket to the core support.



**12.** Remove the 10mm nut securing the horn to the bracket and put the horn and nut aside for later steps.

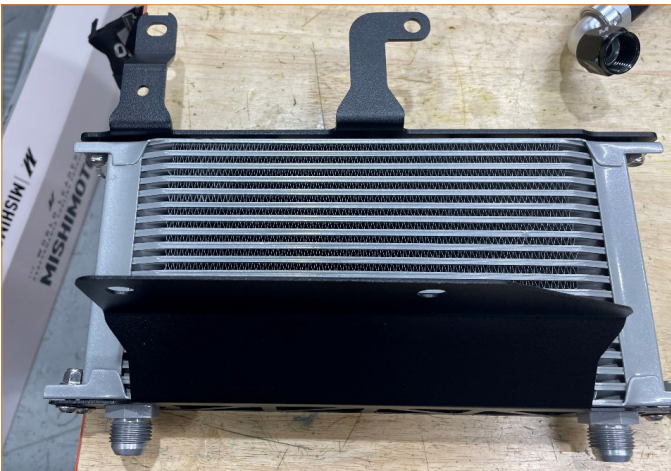


Continued on next page

**13.** Remove the 1x push clip holding the passenger side duct behind the bumper. This should be located right above the upper intercooler bracket. Remove the duct from the vehicle.



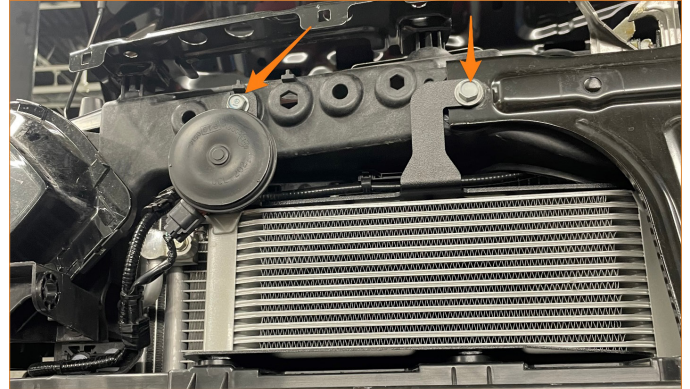
**14.** Using the 8x supplied M6 bolts and locknuts, secure the 2x included oil cooler brackets to the oil cooler assembly as shown. The holes in the brackets are slotted. We suggest installing the brackets with the bolts in the middle of the slots, leaving room for adjustment later if necessary. In the orientation shown, the "M" logo will be facing inward. If the oil cooler is mounted with the "M" logo outwards, it will be upside down.



**15.** Install the horn onto the upper oil cooler bracket as shown. Refer to the picture in the next step for the correct orientation. The electrical connector should be between the 7 and 8 o'clock position. Tighten the nut with a 10mm wrench. (Refer to photo on right)



**16.** Install the oil cooler into the vehicle using the 2x factory bolts removed in step 11. The longer bolt should go where the horn bracket originally was. Make sure that the holes in the bottom bracket are aligned with the push clip holes in the plastic bumper beam cover. Do not install the push clips yet.



**17.** Remove 5x push clips and allow the passenger side of the plastic undertray surround to hang underneath the car, giving access to the passenger side of the subframe rail.



Continued on next page

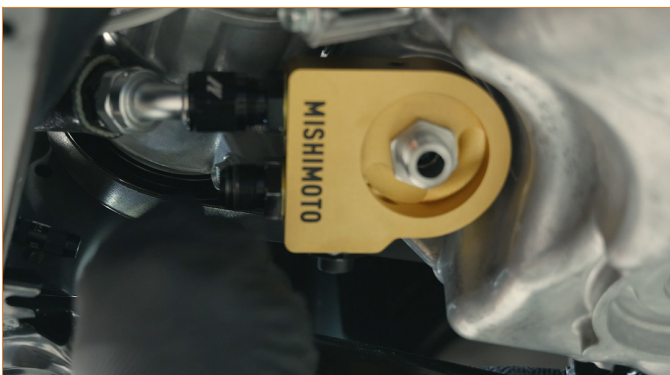
**18.** Detach the electrical connector clip from the bracket on the subframe rail and move the electrical line to the side.



**19.** Install the 2x included fittings and dowty seals onto the sandwich plate and install the sandwich plate onto the engine after lightly lubricating the o-ring with clean engine oil. Tighten the fitting enough so that the sandwich plate can still rotate.



**20.** Take the shorter oil line with the one 45 degree fitting and attach the 45-degree fitting and thread onto the fitting on the sandwich plate closer to the center of the vehicle (do not fully tighten) and route the hose above the intercooler pipe and under the bumper support. Thread the 90-degree end onto the fitting on the oil cooler closer to the center of the vehicle.



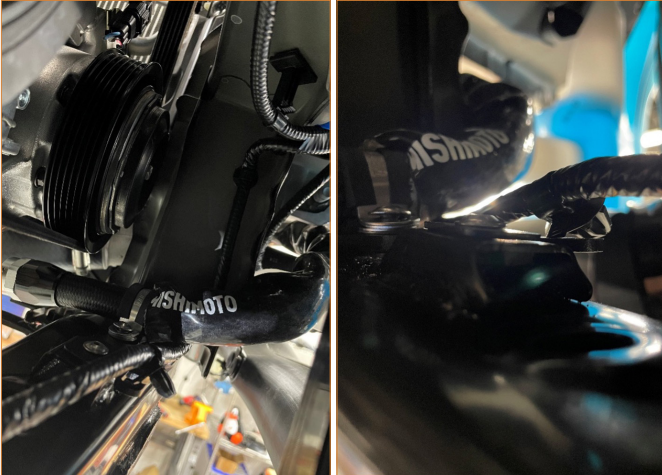
**21.** Take the longer AN line with 2x 90-degree fittings and install the P-clamp and bracket onto the end of the hose as shown. Install the included M5 bolt through the P-clamp and into the bracket, approximately 50mm away from the hose end fitting. Do not fully tighten at this time.



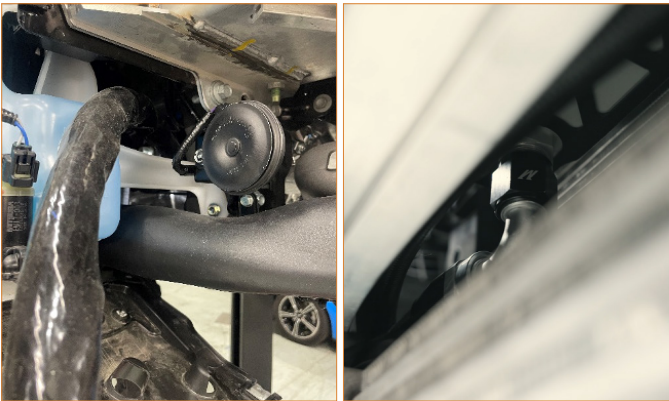
**22.** Install the line into the vehicle. First, thread the line through the wheel well and line up the hose end with the remaining fitting on the sandwich plate. Then, using the included M5 bolt and rectangular washer, install the bracket onto the bracket on the subframe. Do not fully tighten at this time. Then, lightly lubricate the hose fitting with engine oil and install the hose onto the sandwich plate fitting. Do not fully tighten the hose end at this time.



Continued on next page



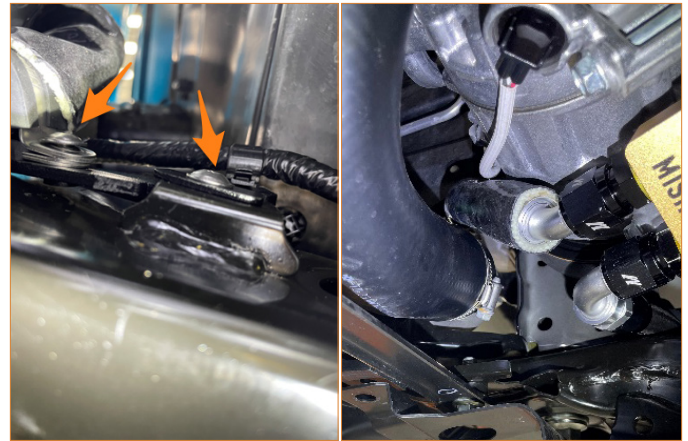
**23.** Route the other end of the line through the wheel well, between the intercooler end tank and the bumper support. Lightly lubricate the hose end threads and install the hose end onto the passenger's side fitting on the oil cooler.



**24.** Install the included line separator on the lines right above the intercooler end tank. This will help position the lines so that they do not rub on the intercooler or core support. Pay special attention to make sure the lines do not rub on the upper intercooler bracket.



**25.** Take the line with the 45-degree fitting and adjust the line so that it is in a position furthest from the A/C compressor pulley and tighten the 27mm sandwich plate center bolt. Then, tighten both hose ends on the sandwich plate with the hoses in a position that will keep the hoses away from the A/C pulley and belt. Tighten the 2x 3mm Allen head bolts that secure the line bracket to the subframe bracket. Install the electrical line clip into the line bracket.



**26.** Tighten the 2x 90-degree hose ends on the oil cooler. Make sure the lines are routed cleanly and the hose covers are in place to help prevent any abrasion or heat damage from the lines rubbing on any parts of the vehicle.



**27.** Optional: Trim the duct piece removed in step 13 on the dotted line and reinstall using the factory push clip. It will be very difficult to install the push clip because it will be located behind the oil lines. Most customers will choose to omit the duct with no performance loss.

(Image on the next page)

Continued on next page



**28.** Reinstall the oil filter and add approximately 0.5 quarts of oil to the engine oil fill port on top of the engine. If you are changing the oil, change the filter and add the normal amount of oil plus an additional 0.5 quarts. Remember to lubricate the filter o-ring with clean engine oil.

**29.** Start the engine and let it idle for 30 seconds to verify that no oil leaks are present. If there are any oil leaks, tighten the fittings as necessary.

**30.** Reinstall the radiator duct. The lower oil cooler bracket should fit underneath the radiator duct and will be secured by the factory push clip going through both the radiator duct and the lower oil cooler bracket.

**31.** Re-install the passenger-side plastic undertray. Make sure to reconnect the brake duct to the wheel well liner so that everything fits together properly.

**32.** Re-install the front bumper and trim pieces under the headlights.

**33.** Re-install the skidplate/undertray.

**34.** Let the vehicle idle completely up to temperature and check the oil level. Add oil if necessary. The vehicle will likely need an additional 0.5 quarts.

**35.** After the initial test drive, we suggest rechecking the oil level and checking for leaks.

**Please note that the Civic Type R DOES NOT have a factory oil temperature sensor. The oil temperature readings given by the vehicle display are an inferred value and are no longer accurate once an oil cooler is added.**

Continued on next page

## DISPOSAL INSTRUCTIONS

- › Do not dispose of any product as unsorted municipal waste. Use separate collection facilities. Contact your local authority for information regarding the collection systems available.
- › Never improperly dispose of any coolant, oil, or other chemicals

## WARRANTY INFORMATION



- › All claims must be accompanied with a picture of the Mishimoto product showing the issue for which the claim is being submitted.
- › Mishimoto asks that the customer inspect their purchased item for any damage immediately upon arrival.
- › Any product deemed dead on arrival (DOA) must be claimed within 14 business days of delivery. Claims outside of this time frame will not be covered under the Mishimoto Lifetime Warranty.
- › This warranty does not include payment and/or reimbursement of the cost of labor in connection with the removal of any product returned pursuant to the warranty policy or in connection with the installation of any replacement items provided under the warranty policy.
- › Mishimoto has the right to refuse a claim at any time.

- › When Mishimoto accepts a claim, Mishimoto retains full discretion to choose if it will: (i) repair or replace purchaser's original Mishimoto product; (ii) replace purchaser's original Mishimoto product with the most current available model; or (iii) provide the purchaser with a gift card redeemable on **Mishimoto.com** in the amount of the original purchase price of the original Mishimoto product. The provision of a replacement of a Mishimoto product is subject to availability and Mishimoto retains the right to substitute any warranty claim item with a comparable item or credit at any time.
- › If Mishimoto determines that it will provide a replacement item in connection with a claim under this warranty policy, and such item is out of stock, Mishimoto will place the customer on backorder and ship the replacement product to the purchaser once it becomes available.
- › Mishimoto is not liable for incorrect shipments in connection with a claim if a claim form is completed incorrectly, or if a model number is not included in a claim.
- › If you have a vehicle equipped with an automatic transmission, please make sure to specify this within the text box on the claim form. Mishimoto is not responsible for incorrect replacement shipments if transmission type is not indicated.



**WARNING**  
Cancer and  
Reproductive Harm  
[www.P65Warnings.ca.gov](http://www.P65Warnings.ca.gov)

- › This product can expose you to chemicals which are known to the state of California to cause cancer. For more information visit:  
[www.p65warnings.ca.gov](http://www.p65warnings.ca.gov)