

advanced FLOW engineering

Cold Air Intake System

Instruction Manual P/N: 56-10072R / 56-10072V

Make: KIA

Model: K5

Year: 2021-2024

Engine: L4-1.6L (t)



- Please read the entire instruction manual before proceeding.
- Ensure all components listed are present.
- If you are missing any of the components, call customer support at 951-493-7185.
- Ensure you have all necessary tools before proceeding.
- Do not attempt to work on your vehicle when the engine is hot.
- Retain factory parts for future use.

Label	Qty.	Description	Part Number
A	1	Air Filter (Pro 5R) For 56-10072R	20-91211R
A	1	Air Filter (D2) For 56-10072V	20-90211V
B	1	Tube	05-5670072B1
C	1	Housing	05-5610073B2
D	2	Clamp, 052 (2-13/16" – 3-3/4")	03-50008
E	1	Clamp, 032 (1-9/16" – 2-1/2")	03-50016
F	1	Clamp, 044 (2-5/16" – 3-1/4")	05-50019
G	1	Fitting, 3/8"ID x 1/4" NPT	03-50193
H	1	Coupler, (3-3/8 x 3-1/8)"ID x 2"L	05-01276
J	1	Sleeve, Adaptor	05-01308
K	1	Coupler, (2-3/4 x 2-1/8)"ID x 2-1/2"L	05-01489
M	1	Plug, Sil: 2.25" Dia x 0.16" THK (Takeda)	05-01527
N	1	Seal, Trim Double Bulb (31" Length)	05-01534
P	1	Mount, Aluminum: M8 x 1.2 x 7	05-01547

Installation will require the following tools:

Socket Set, Torx Set, Extensions, Ratchet Wrench, Pliers, Wrench Set

Warranty Information available at: <https://afepower.com/warranty>

Emissions Disclaimer: This product is not currently CARB exempt and is not available for purchase in California or for use on any vehicle registered with the California Department of Motor Vehicles. CARB exemption applications can take time to process, please contact us or visit our website for the latest updates on its status.

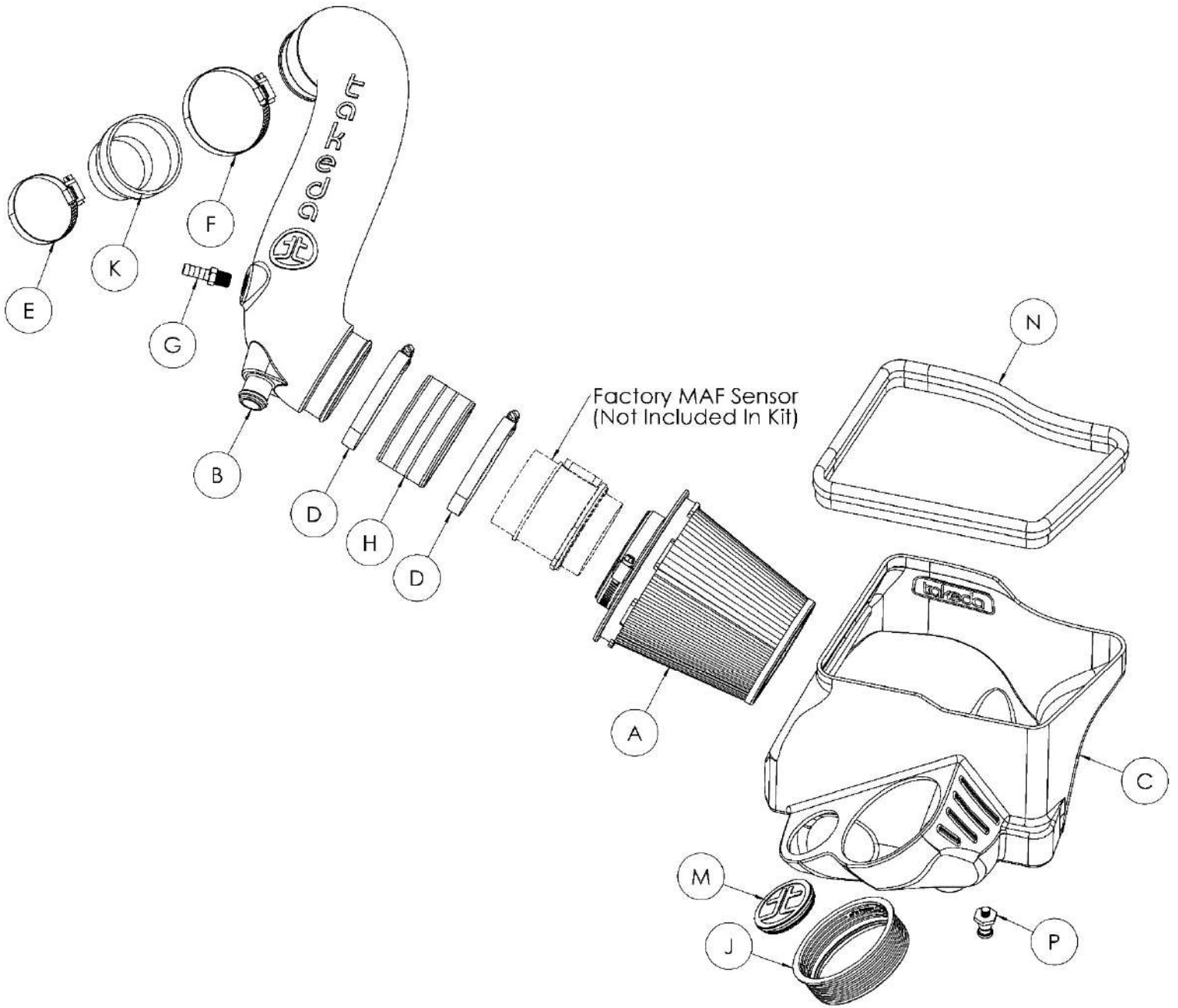




Figure A

Refer to Figure A for Step 1

Step 1: Remove the factory air scoop by pulling it straight upward. Release the front end first, then lift the end that connects to the factory air box.

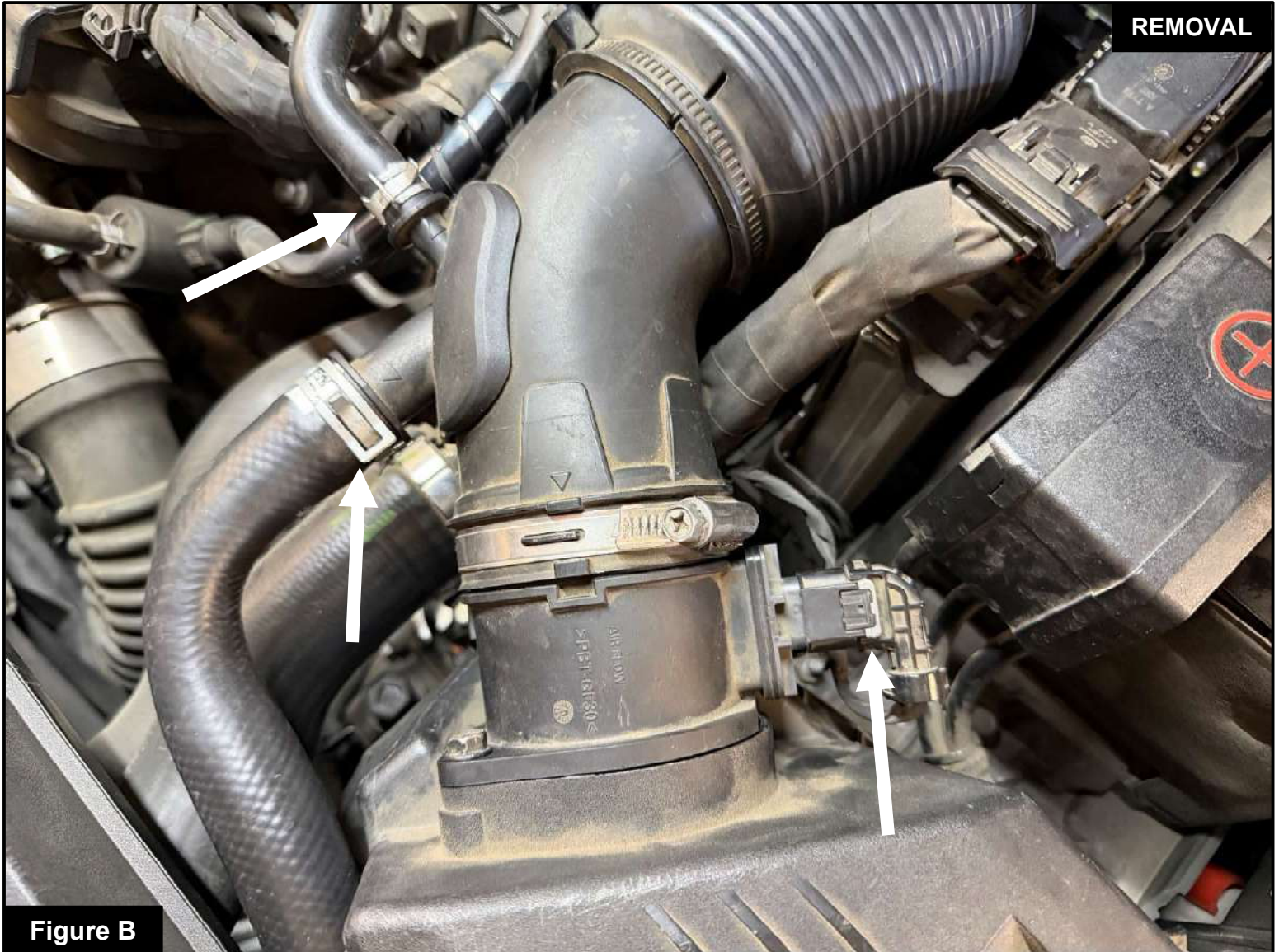


Figure B

Refer to Figure B for Steps 2-3

Step 2: Use pliers to compress the factory pinch clamps and slide them back, then remove the engine breather hose and recirculation hose from the factory tube.

Step 3: Disconnect the MAF sensor by pulling the gray locking tab out, then press the top and bottom of the connector and slide it off.

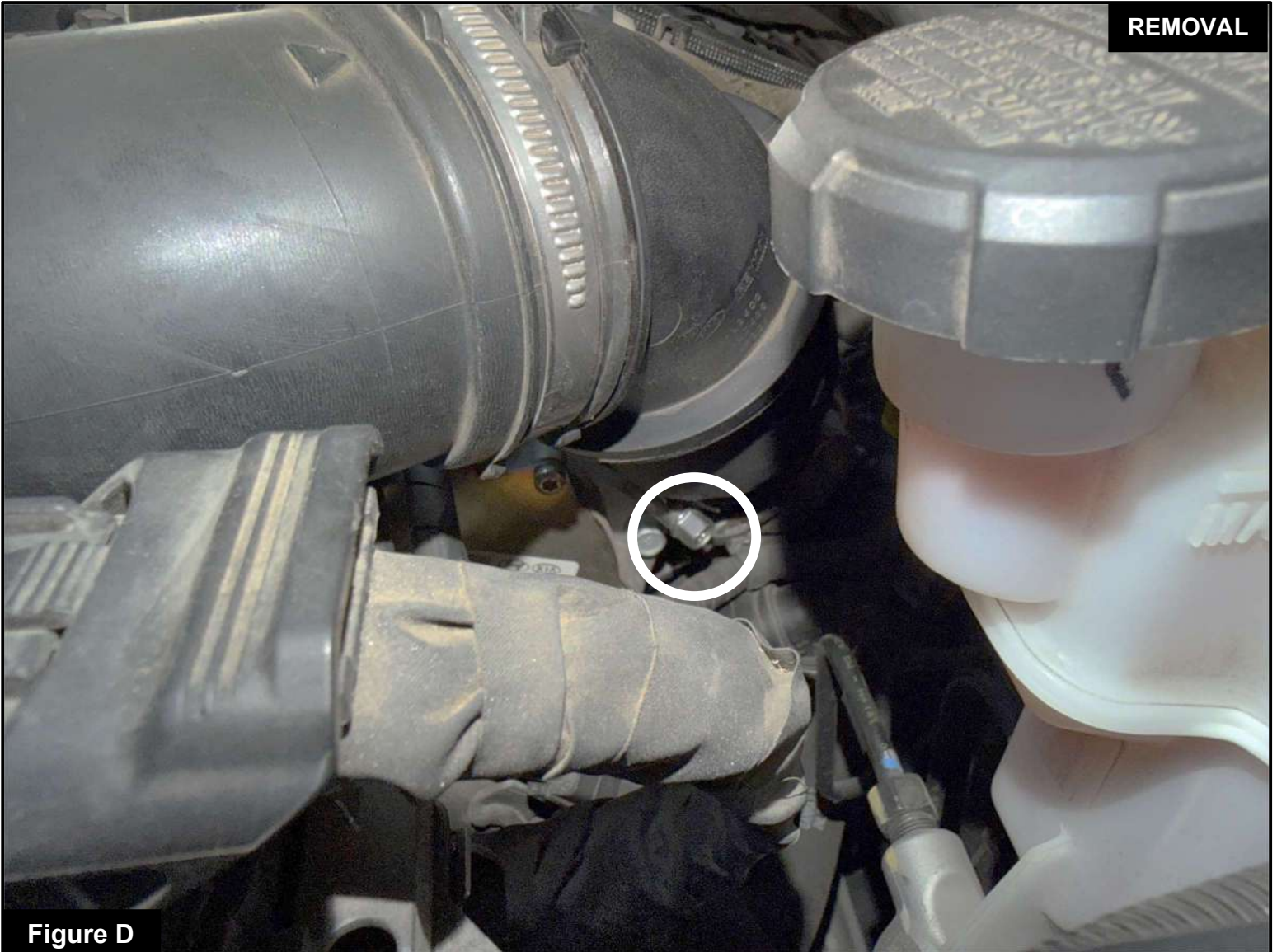
- **On some models, the MAF sensor harness may be secured to a bracket and will need to be slid off the bracket as well.**



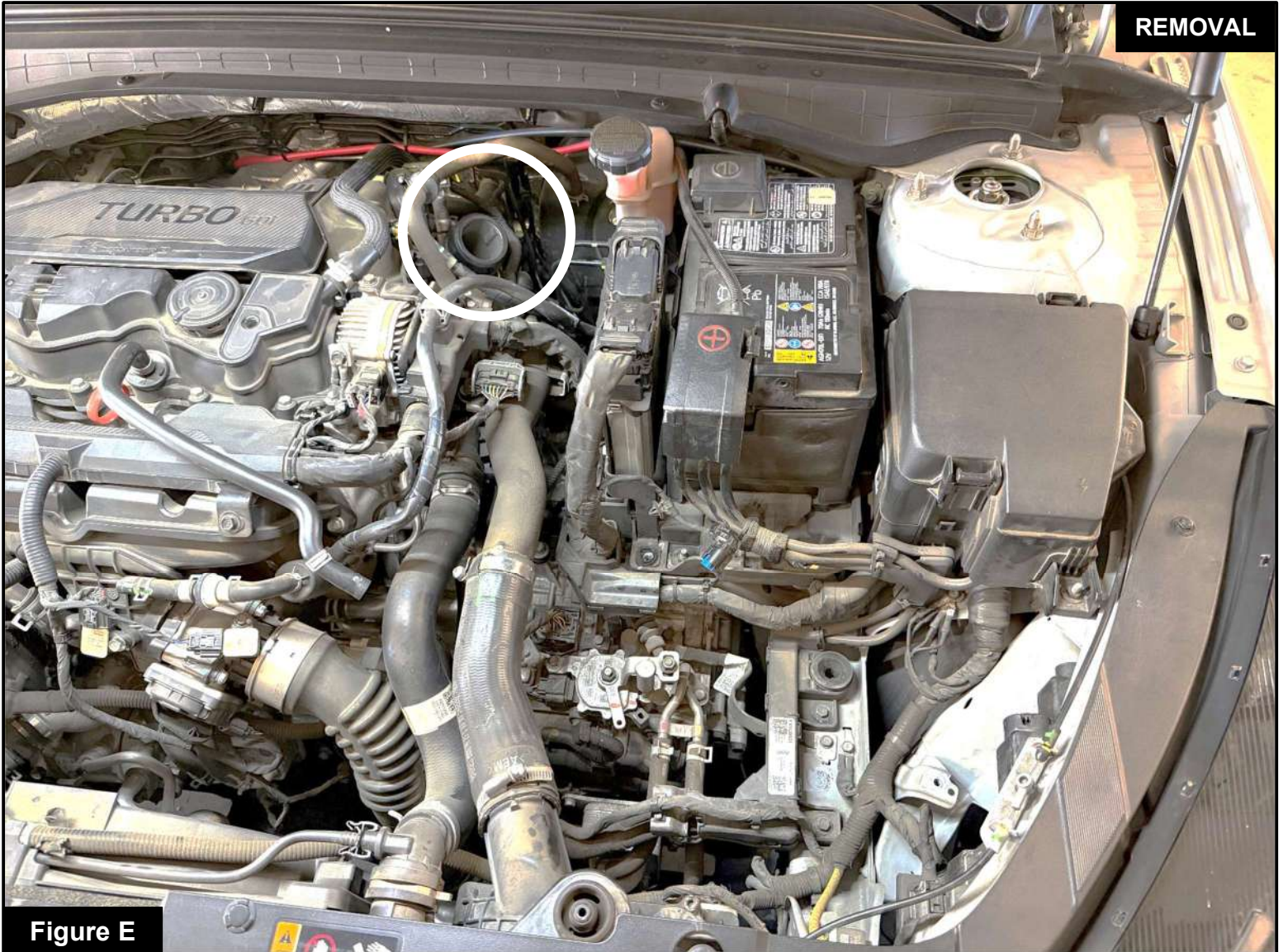
Figure C

Refer to Figure C for Step 4

Step 4: Use a 10mm socket with an extension to remove the screws securing the factory air box. Screws will be reused during installation.

**Figure D****Refer to Figure D for Step 5**

Step 5: Use a 10mm socket wrench to loosen the hose clamp closest to the firewall, which secures the factory intake tube to the turbo inlet.

**Figure E****Refer to Figure E for Step 6**

Step 6: Carefully remove the factory tube and air box from the vehicle. If the rubber adapter does not come off with the tube, remove it from the turbo inlet separately.



Figure F

Refer to Figure F for Steps 7-8

Step 7: Transfer the rubber bump stop from the factory air box to the **TAKEDA** housing.

Step 8: Transfer the rubber isolation mount and metal insert from the factory air box to the **TAKEDA** housing.

**Figure G****Refer to Figure G for Step 9**

Step 9: Use a 3/4" wrench to install the provided aluminum mount onto the **TAKEDA** housing.
(Aluminum mount shown without black anodized finish for clarity.)

**Figure H****Refer to Figure H for Step 10**

Step 10: Use a 10mm socket to remove the two screws securing the MAF sensor harness bracket and the factory MAF sensor cartridge. If your MAF sensor has an O-ring, remove it. The MAF sensor cartridge will be reused during installation.

**Figure J****Refer to Figure J for Step 11**

Step 11: Use a 15mm wrench to install the provided fitting into the **TAKEDA** intake tube. As you tighten, you should feel resistance as the threads make contact and the fitting begins to seal. Having a small gap between the hex portion of the fitting and the intake tube is ok, do not overtighten. Over-tightening can damage the threads

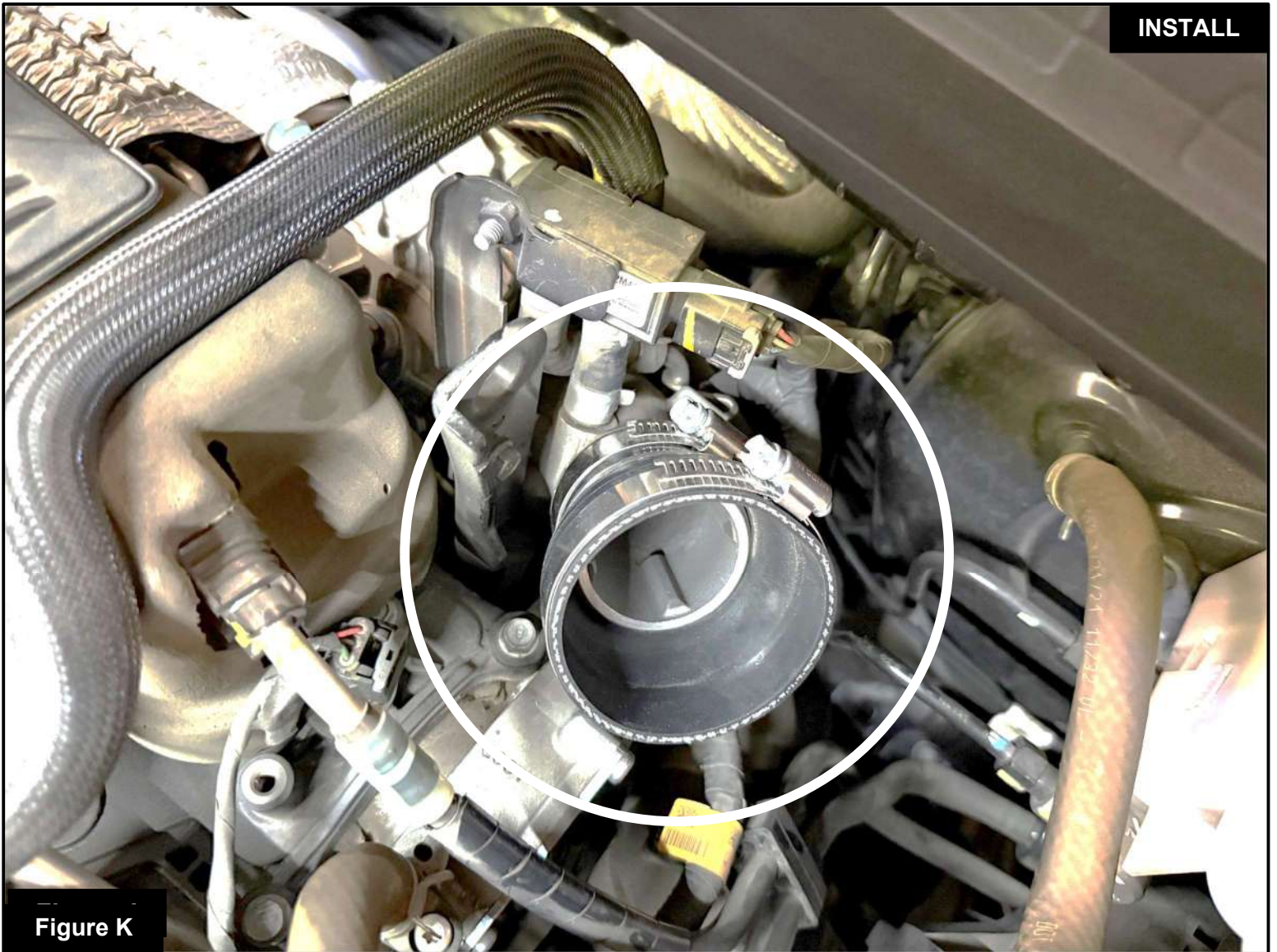


Figure K

Refer to Figure K for Steps 12-13

Step 12: Install the provided **aFe POWER** silicone coupler and **#44** clamp onto the turbo inlet, then tighten the clamp securely.

Step 13: Install the **#48** clamp onto the coupler, but do not tighten it at this time.

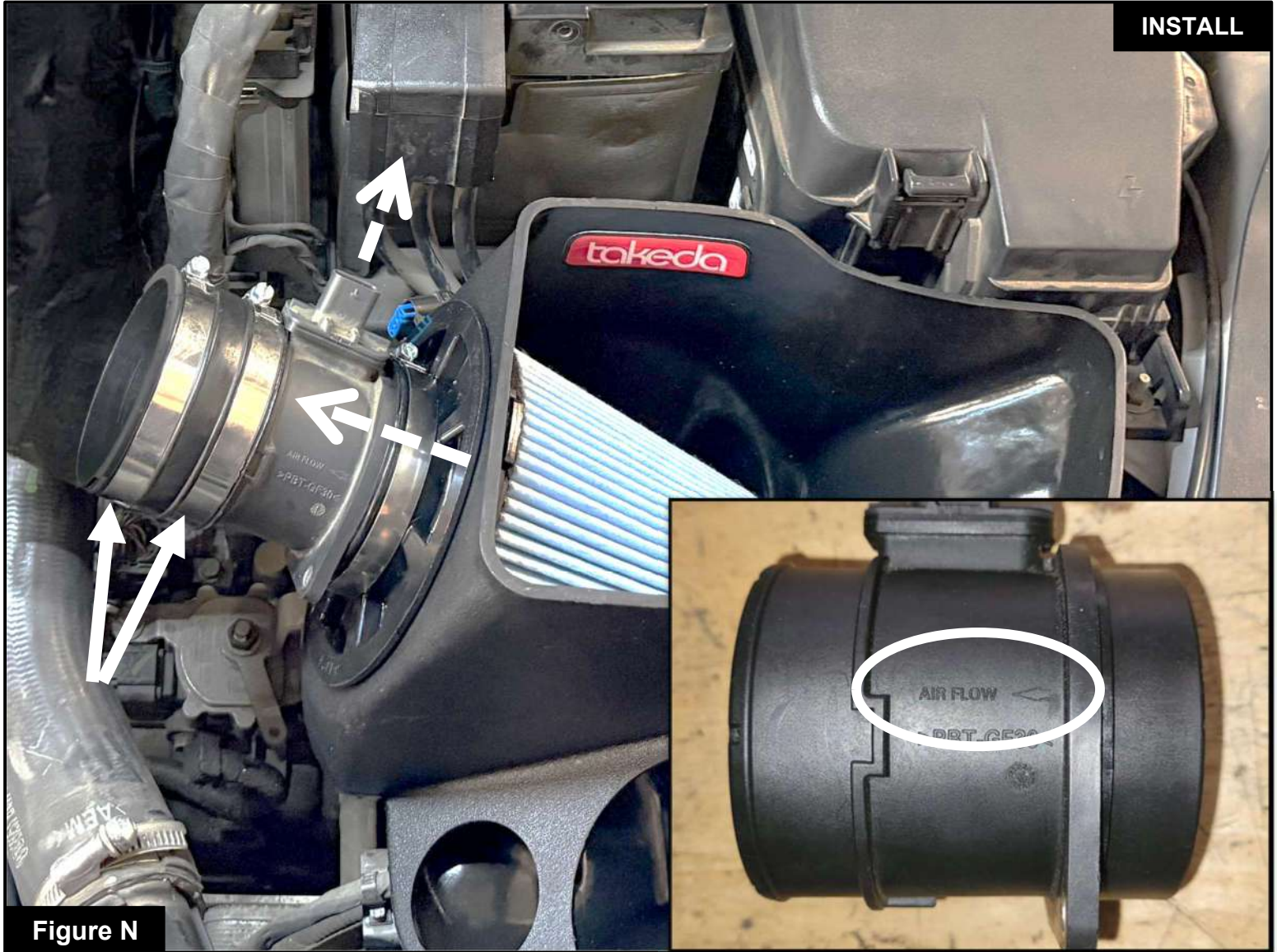


Figure M

Refer to Figure M for Steps 14-15

Step 14: Install the **TAKEDA** housing into the vehicle, making sure the aluminum mount seats properly into the mounting grommet

Step 15: Use one of the 10mm screws removed in **Step 3** to secure the **TAKEDA** housing. The screw installs from inside the **TAKEDA** housing.


Figure N

Refer to Figure N for Steps 16-18

Step 16: Install the **aFe POWER** air filter with clamp into the **TAKEDA** housing, making sure the locking tabs engage securely. The filter should be able to rotate freely in place without coming off. Do not tighten the filter clamp at this time.

Step 17: Install the MAF sensor cartridge that was removed in **Step 10** by sliding it into the air filter first.

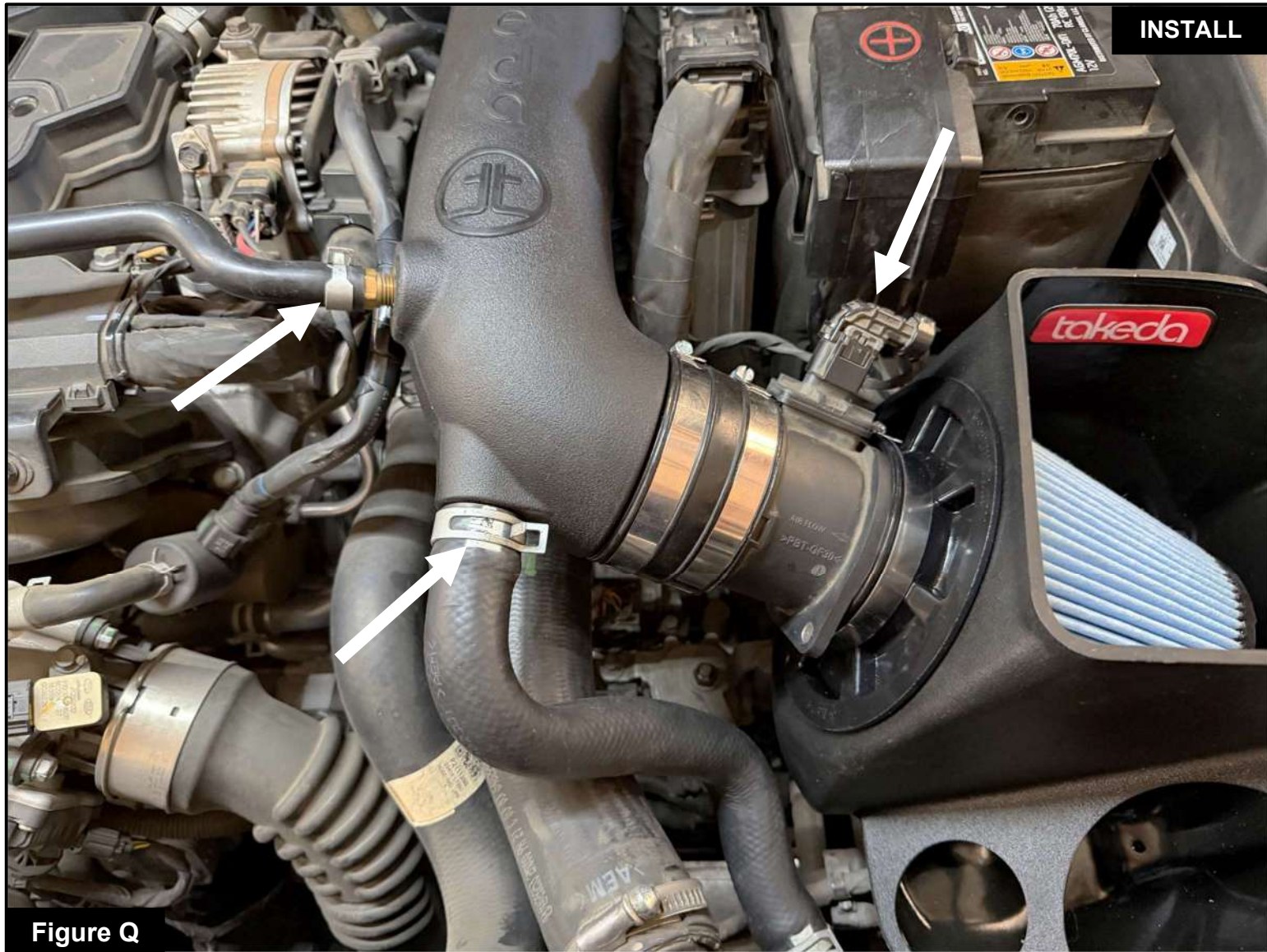
- If your MAF sensor has an O-ring, remove it prior to installation.
- Make sure the “**AIR FLOW ←**” is visible and the arrow direction points toward the engine.
- Make sure MAF sensor connector terminal is pointing towards the battery, typically at a 45° angle.

Step 18: Install the provided coupler with the smaller end toward the MAF sensor cartridge. Install the both **#52** clamps onto the coupler but do not tighten it at this time

**Figure P****Refer to Figure P for Steps 19-20**

Step 19: Install the **TAKEDA** intake tube.

Step 20: Use an 8mm driver or socket wrench to tighten the clamps on the air filter, MAF sensor cartridge, and both couplers, securing the **TAKEDA** intake tube in place.

**Figure Q****Refer to Figure Q for Steps 21-22**

Step 21: Install the engine breather hose and recirculation hose onto the **TAKEDA** tube, then use pliers to compress the factory pinch clamps and slide them back into position to secure the hoses.

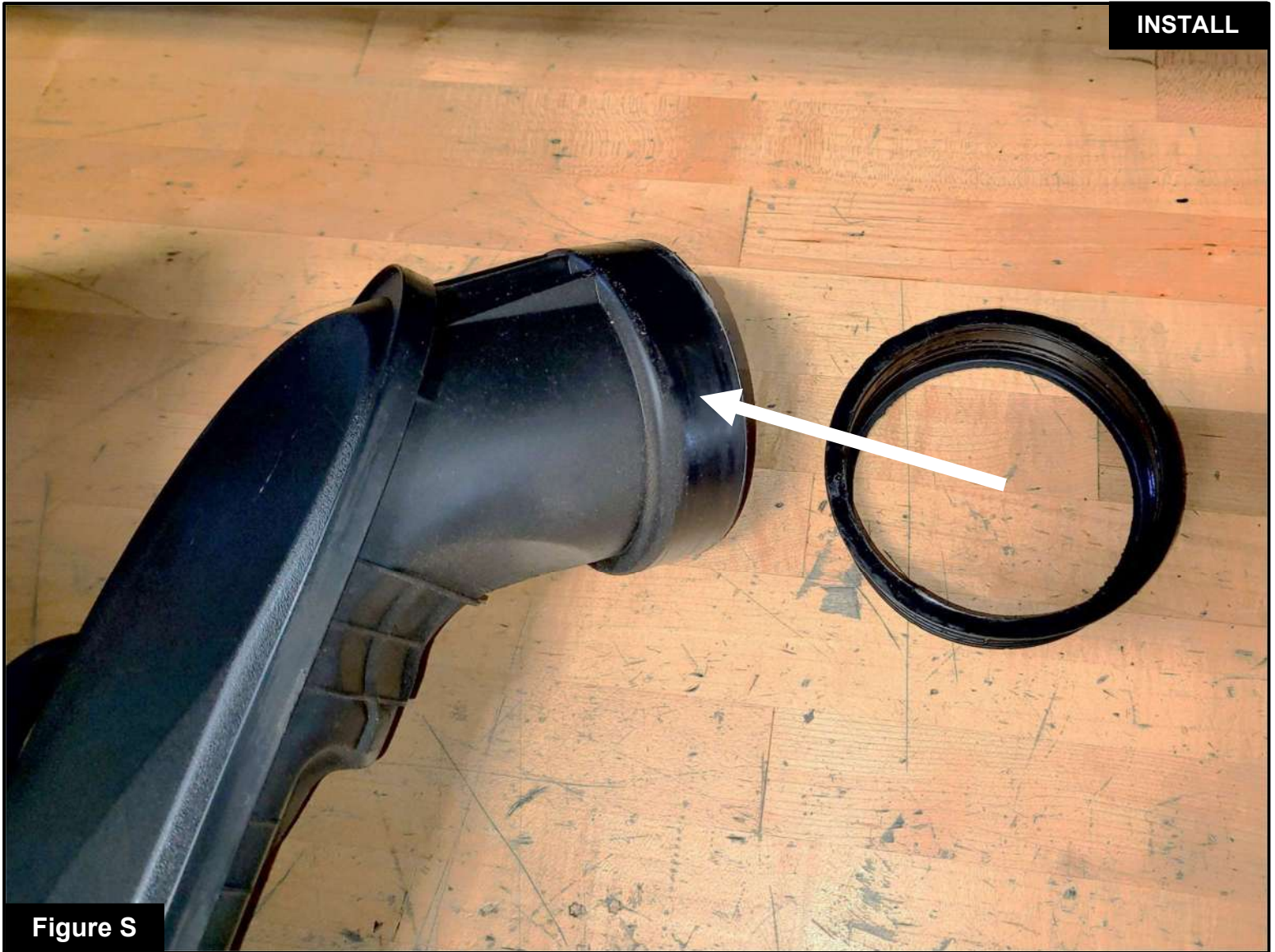
Step 22: Reconnect the MAF sensor harness until it clicks into place, then press the gray locking tab down until it clicks and locks.

**Figure R**

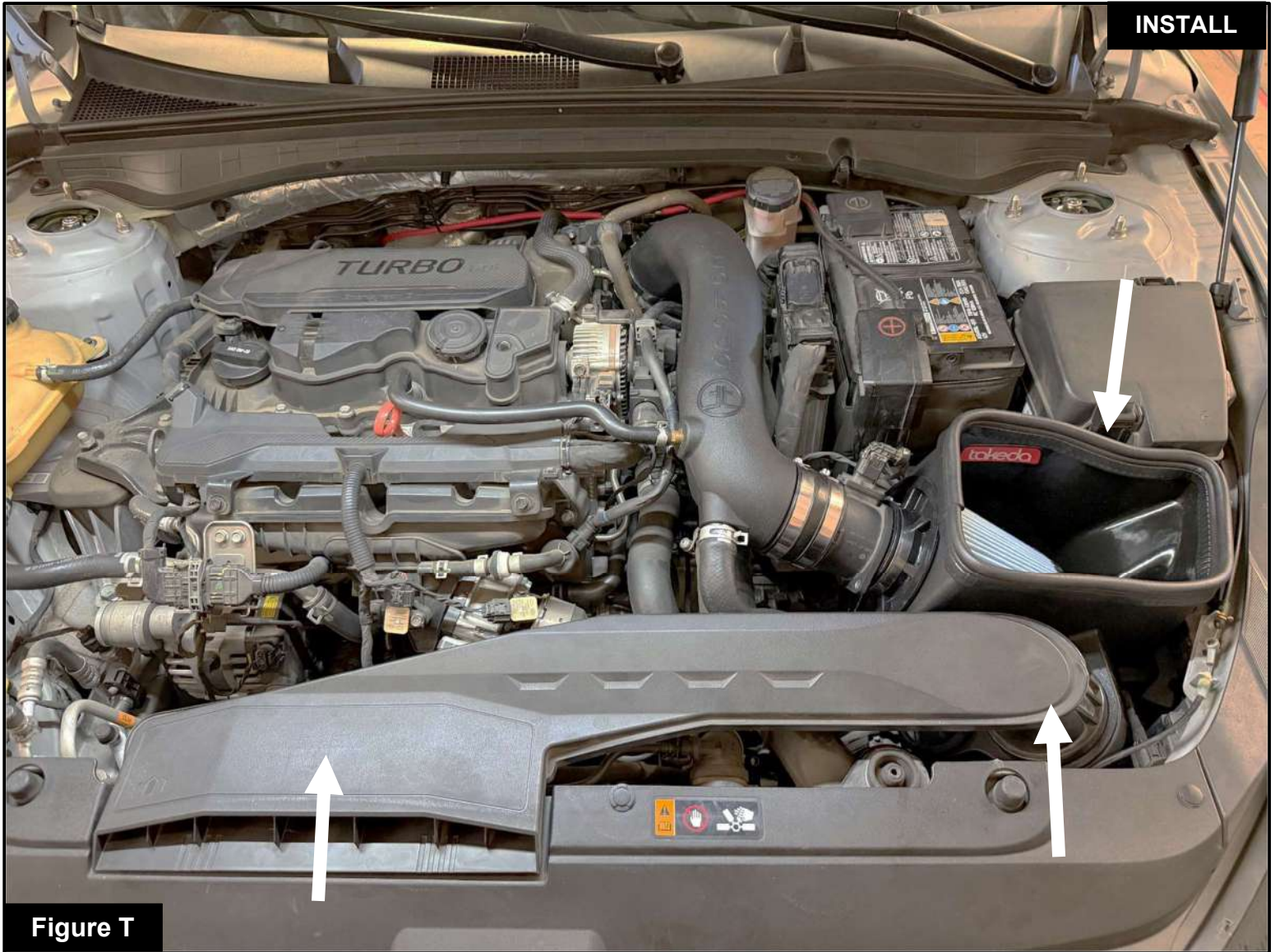
Refer to Figure R for Step 23

Step 23: Install the **TAKEDA** plug. The kit includes an optional plug to close off the auxiliary air inlet.

- Without the plug installed, the **TAKEDA** intake will capture the maximum amount of air available. More airflow can lead to increased power, but some of this air may come from inside the engine compartment and could be warmer, potentially affecting vehicle performance.
- Installing the plug on the housing will block out hot engine air, ensuring that only the coolest air is directed into the engine. This will also help reduce intake noise.

**Figure S****Refer to Figure S for Step 24**

Step 24: Install the provided **aFe POWER** sleeve adaptor onto the factory air scoop, making sure the scoop end seats fully against the inside edge of the adaptor for an even, secure fit.



INSTALL

Figure T

Refer to Figure T for Steps 25-26

Step 25: Install the factory air scoop into the **TAKEDA** housing first, making sure the coupler flange sits flush with the housing. Do not push the scoop in too far, as this can cause poor fitment. Then firmly press the front section of the air scoop back into the front grommets

Step 26: Install the provided seal trim onto the top edge of the **TAKEDA** housing.



Your installation is now complete. Thank you for choosing TAKEDA USA!

NOTE: Check to ensure that all screws, clamps, and connectors are secure after 100-200 miles.



PAGE LEFT BLANK INTENTIONALLY



PAGE LEFT BLANK INTENTIONALLY



advanced FLOW engineering, inc.

Corona, CA 92879

<https://afepower.com/contact-us>