

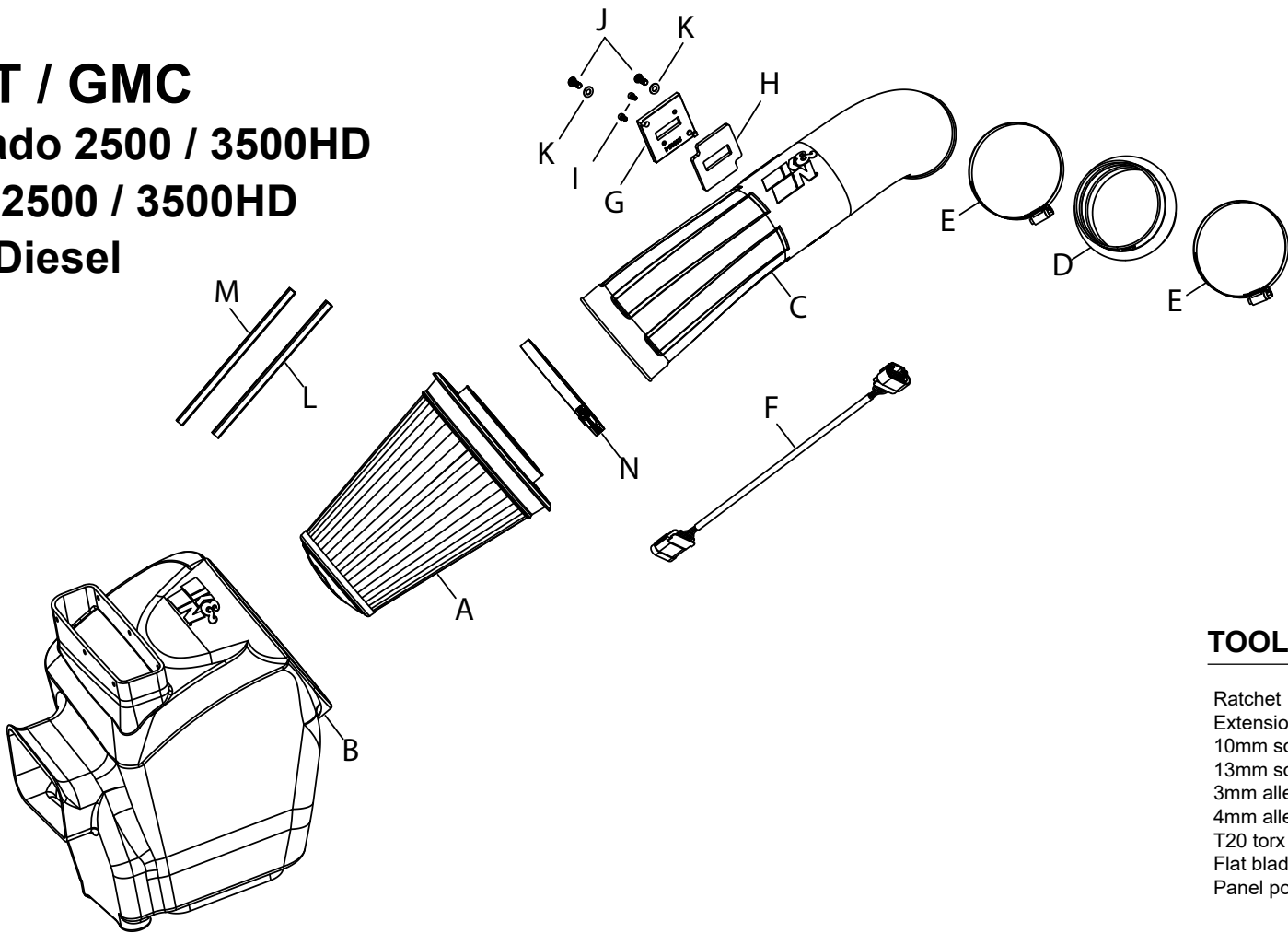


INSTALLATION INSTRUCTIONS

Not legal for sale or use in California on any pollution controlled motor vehicle.

50-3101D CHEVROLET / GMC 2017-19 Silverado 2500 / 3500HD 2017-19 Sierra 2500 / 3500HD V8-6.6L Turbo Diesel

NOTE: This kit was not designed to fit vehicles with a body lift.



PARTS LIST:

Description	Qty.	Part #	Description	Qty.	Part #	Description	Qty.	Part #
A AIR FILTER	1	RU-3139HBK	F EXTENSION HARNESS	1	21786	K WASHER; FLAT	2	08269
B AIR BOX	1	087654	G ADAPTOR; MAF SENSOR	1	21515-1	L CLIP; SNAP-ON, RED	1	088218
C TUBE	1	087655	H GASKET; PORON	1	09069	M CLIP; SNAP-ON, ORANGE	1	088219
D HOSE; HUMP 4" X 3"L	1	08418	I BOLT; M4-.7 X 8MM	2	07733	N HOSE CLAMP; #88 BLK	1	KITHS88K
E HOSE CLAMP; #64 BLK	2	08645KA	J BOLT; M6 X 1 X 16MM	2	07730			

TOOLS NEEDED:

Ratchet
Extension
10mm socket
13mm socket
3mm allen
4mm allen
T20 torx
Flat blade screwdriver
Panel popper

If you need any assistance please call 1-800-858-3333 to speak with a representative in our Customer Service Center before returning the product.

NOTE: FAILURE TO FOLLOW INSTALLATION INSTRUCTIONS AND NOT USING THE PROVIDED HARDWARE MAY DAMAGE THE INTAKE TUBE, THROTTLE BODY AND ENGINE.

TO START:

1. Turn off the ignition and disconnect the negative battery cable.
NOTE: Disconnecting the negative battery cable erases pre-programmed electronic memories. Write down all memory settings before disconnecting the negative battery cable. Some radios will require an anti-theft code to be entered after the battery is reconnected. The anti-theft code is typically supplied with your owner's manual. In the event your vehicles anti-theft code cannot be recovered, contact an authorized dealership to obtain your vehicles anti-theft code.



2. Slide the red locking tab back and then release the mass air sensor electrical connection.



3. Loosen both clamps on the intake tube and remove.



4. Lift up the air filter housing to release it from the mounting grommets and then remove the air filter housing from the vehicle.



5. Loosen clamp on turbo housing, and loosen the nut holding in the resonator sound box and remove.



6. Remove the four bolts that secure air filter mounting tray and then remove the tray from the vehicle. Three of the factory bolts will be reused in a later step.
NOTE: K&N® Engineering, Inc., recommends that customers do not discard factory air intake.



7. Remove the 6 push clips from the air box rubber hood seal on the stock air box. Remove the rubber hood seal. Save clips for next step.



8. Install the factory rubber hood seal to the K&N® air filter housing. Secure using the 6 push clips.



9. Install the K&N® air filter housing into the vehicle and position. Secure the air box using 3 factory bolts from step 6.



10. Attach the filter clips to the pleats on the air filter align and push down. Passenger side filters, place orange clip on top and red on bottom.



11. Install the K&N® air filter into the K&N® air filter housing.



12. Remove the mass air sensor from the factory housing.



13. Install the adapter gasket onto the bottom of the adapter.



14. Install the mass air sensor into the provided adapter and secure with the provided hardware.



15. Install the MAF sensor assembly into the intake tube and secure using provided hardware. Secure and tighten. **NOTE: Make sure the sensor is going in the correct direction.**



16. Install the hump hose with clamps to the turbo housing. Tighten the clamp on turbo housing only.



17. Install the intake tube assembly into the vehicle and position it into the K&N® filter and hump hose. Once positioned properly, tighten all clamps.



18. With provided MAF sensor harness extension, connect the original harness to the new harness and then to the sensor.



19. Reconnect the vehicle's negative battery cable. Double check to make sure everything is tight and properly positioned before starting the vehicle.

20. It will be necessary for all K&N® high flow intake systems to be checked periodically for realignment, clearance and tightening of all connections. Failure to follow the above instructions or proper maintenance may void warranty.

ROAD TESTING:

1. Start the engine with the transmission in neutral or park, and the parking brake engaged. Listen for air leaks or odd noises. For air leaks secure hoses and connections. For odd noises, find cause and repair before proceeding. This kit will function identically to the factory system except for being louder and much more responsive.
2. Test drive the vehicle. Listen for odd noises or rattles and fix as necessary.
3. If road test is fine, you can now enjoy the added power and performance from your kit.
4. K&N Engineering, Inc., requires cleaning the intake system's air filter element every 50,000 miles. When used in dusty or off-road environments, our filters will require cleaning more often. We recommend that you visually inspect your filter once every 25,000 miles to determine if the screen is still visible. When the screen is no longer visible some place on the filter element, it is time to clean it. To clean, purchase our Synthetic Filter Cleaner, part number 99-0624 and follow the easy instructions.