

# Installation Instructions

Eibach Inc. 264 Mariah Circle Corona, CA 92879 USA Tech Support 800-507-2338 ext. 114



## E30-27-016-02-20

2024+ RAM RHO

### Notes

The Pro Truck Lift springs must be used with the OE shocks.

Front springs are side specific. Springs are stamped "DRIVER" and "PASSENGER" to note which side to install on.

Must be installed with ride height sensor links at least 130mm in length from eye to eye.

### Kit Contents

Description	Part Number	Quantity
Front Spring, Driver side	F31-27-012-02-FL	1
Front Spring, Passenger side	F31-27-012-02-FR	1

### Installation Notes

#### Read all instructions before beginning installation

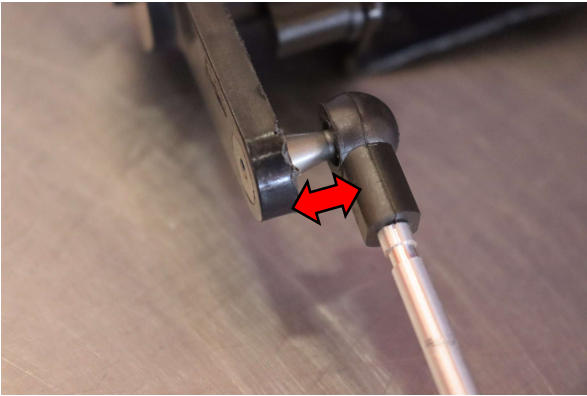
- Only qualified mechanics experienced in the installation and removal of suspension components should perform this installation.
- Use of hoist and screw jack is recommended and will substantially reduce installation time.
- Never work under a vehicle unless it is properly supported.
- Never use impact wrenches or impact guns to install or remove shock absorber piston components, shafts and piston rod nuts.
- For MacPherson Strut type suspension, it is important to mark the orientation of the upper mount with respect to the lower spring perch before disassembly. This must remain the same with the orientation of the Pro-Kit Springs. Noise may result from incorrect procedure.
- All Eibach springs should be installed with the Eibach logo right-side-up. All original stock spring isolators and dampers should be retained from the stock springs when installing Eibach springs.
- After Installation, inspect and adjust the following: Wheel Alignment; tire/wheel fender clearance when using aftermarket wheels or tires; brake line clearance and attachments; anti-lock-brake system sensors.
- Tire Rotation: In order to increase the life of your tires, it is recommended to rotate your tires every 3,000 miles.



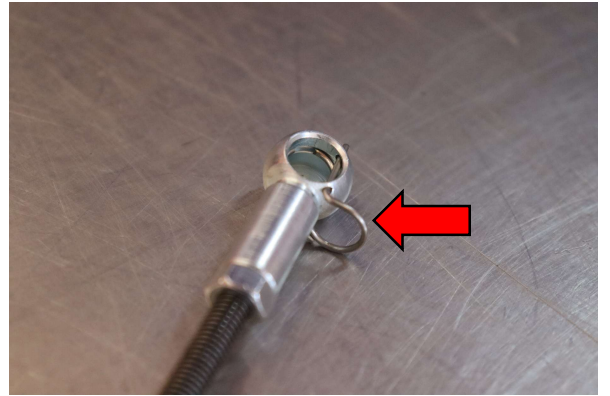
The bottom piece of tubing from the OE springs must be removed and installed on the Eibach springs.



Aftermarket ride height sensor rod required for any RHO that is lifted 2 inches and above.



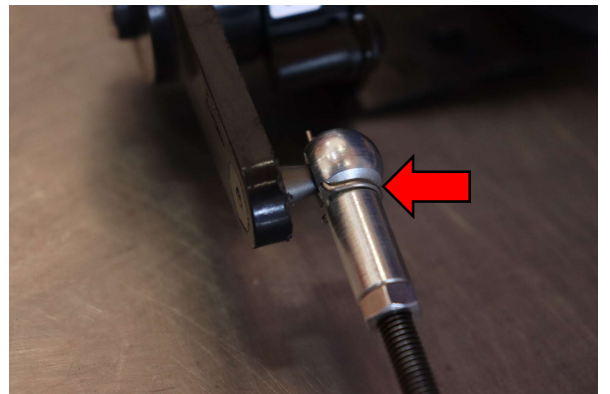
Remove OE ride height sensor rod from UCA and sensor arm. Carefully use a flat head screwdriver or needle nose pliers to remove rod from ball and socket.



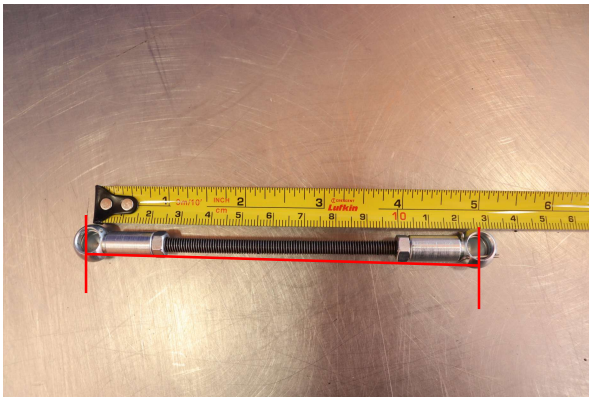
Remove secondary clip from socket before install.



Install new ride height sensor rods on the front. Firmly press socket onto sensor and upper control arm. This rod allows frame mounted sensors to be at factory angle for proper operations on the active terrain dynamics system.



Install secondary clip back onto socket to lock each end of the rod.



DO NOT lower rod below 125mm. Damage can occur to sensor during driving conditions. Ride height rod length can be set between 125mm (4 59/64)IN and 130mm (5 1/8)IN. All measurements are from center to center of sockets.