

# INSTALLATION INSTRUCTIONS

## PRO-SERIES REAR BUMPER



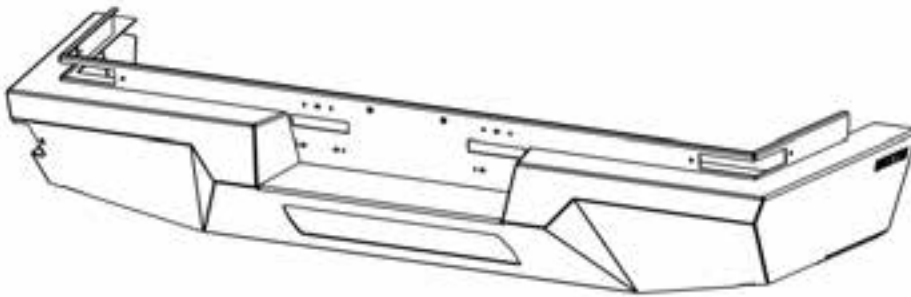
APPLICATION: TESLA CYBERTRUCK 2024-2025

PART NUMBER: 58-426095

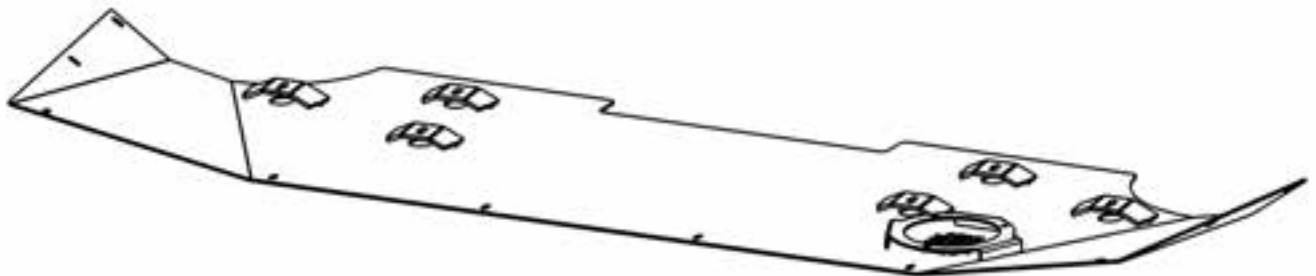
CONTENT			
ITEM	QUANTITY	DESCRIPTION	TOOLS NEEDED
1	1	PRO-SERIES REAR BUMPER	10MM SOCKET
2	1	SKID PLATE	10MM WRENCH
3	1	DRIVER MOUNT BRACKET	13MM SOCKET
4	1	PASSENGER MOUNT BRACKET	16MM SOCKET
5	1	SENSOR COVER	RATCHET
6	6	M12 SERRATED FLANGED HEX BOLT	TORQUE WRENCH
7	6	M12 SERRATED FLANGED HEX NUT	
8	4	M10 HEX HEAD BOLT	
9	4	M10 SPLIT LOCK WASHER	
10	4	M10 FLAT WASHER	
11	4	M10 SERRATED FLANGED HEX NUT	
12	30	M6 BUTTON HEAD BOLT	
13	30	M6 SPLIT LOCK WASHER	
14	18	M6 SERRATED FLANGED HEX NUT	
15	10	M6 CLIP ON NUT	

ANTI-SEIZE LUBRICANT MUST BE USED ON ALL STAINLESS STEEL FASTENERS TO PREVENT THREAD DAMAGE AND GALLING

ITEM 1



ITEM 2



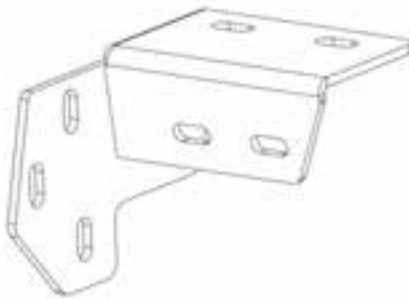
Westin Automotive Products, Inc.  
320 W. Covina Blvd  
San Dimas, Ca. 91773

Thank you for choosing Westin products  
for additional installation assistance please call  
Customer Service (800) 793-7846  
[www.westinautomotive.com](http://www.westinautomotive.com)

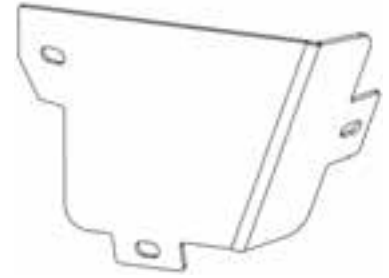
ITEM 3



ITEM 4



ITEM 5



### PROCEDURE

1. Remove contents from box, verify if all parts listed are present and free from damage.  
Carefully read and understand all instructions before attempting installation.  
**Failure to identify damage before installation could lead to a rejection of any claim.**
2. Remove the rear driver side fender flare. Pull the fender flare away from the vehicle to release the clips holding it in place. See **figure 1** as reference.
3. Remove the bolt underneath the fender flare attaching the rear bumper to the body of the vehicle.
4. Remove the 5 clips attaching the rear driver wheel well liner to the rear bumper. See **Figure 2**.
5. Repeat steps 2-4 on the passenger side of the vehicle.

Figure 1

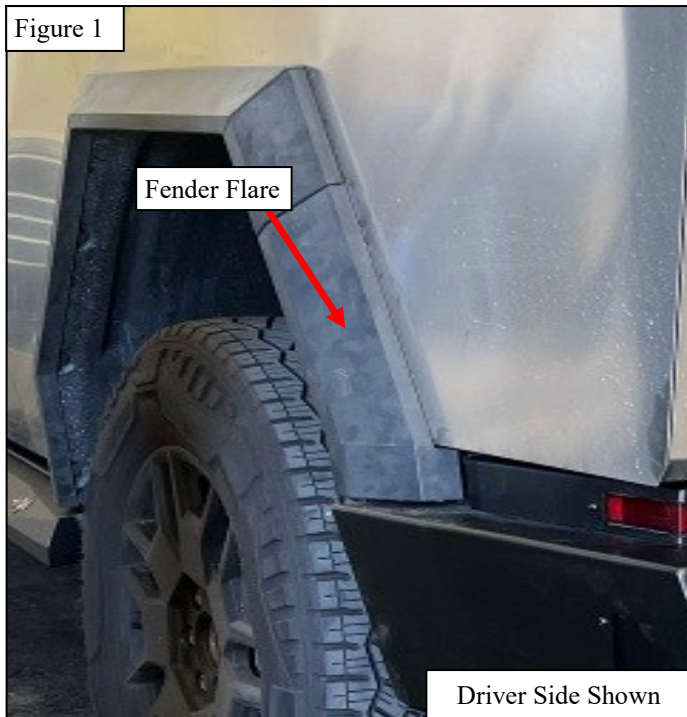
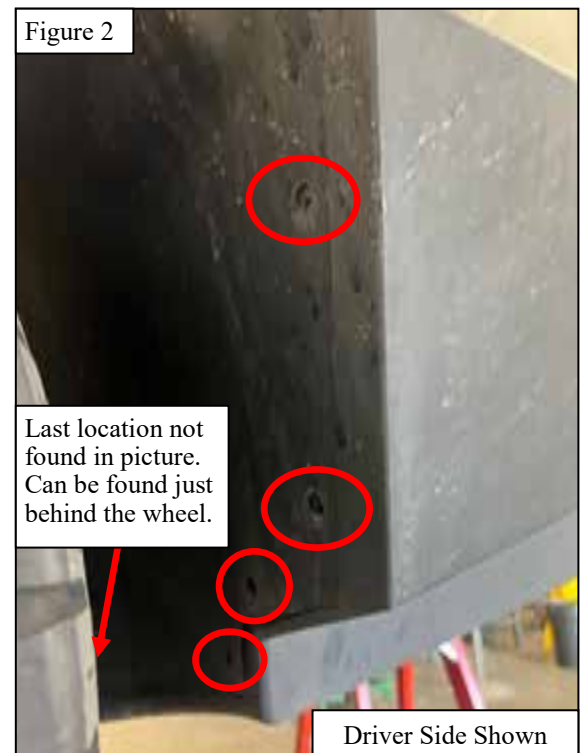
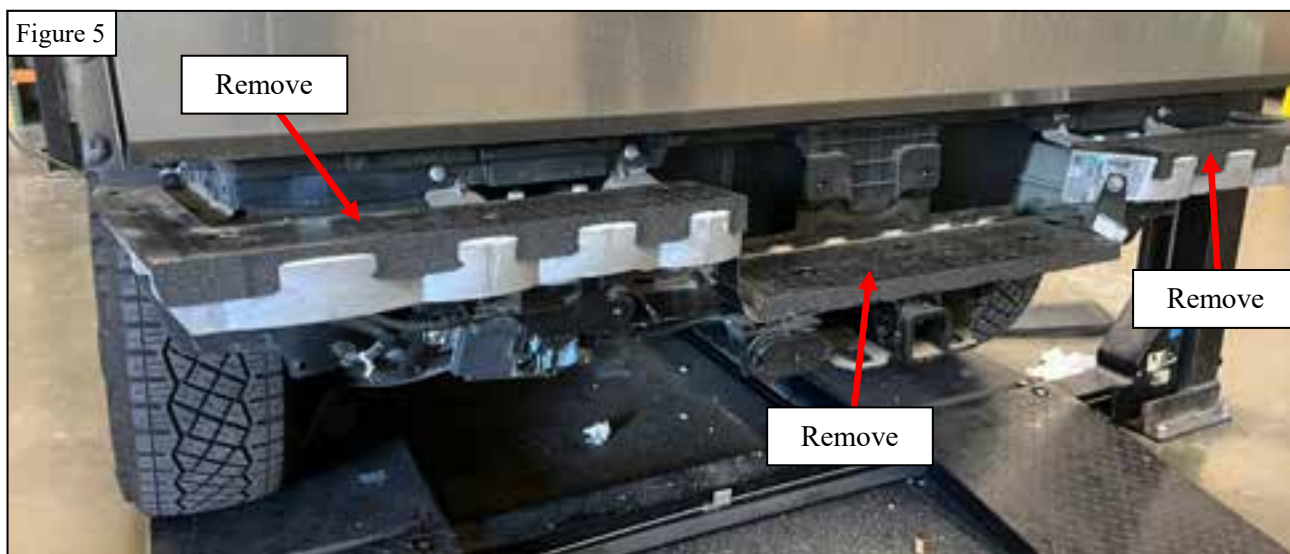
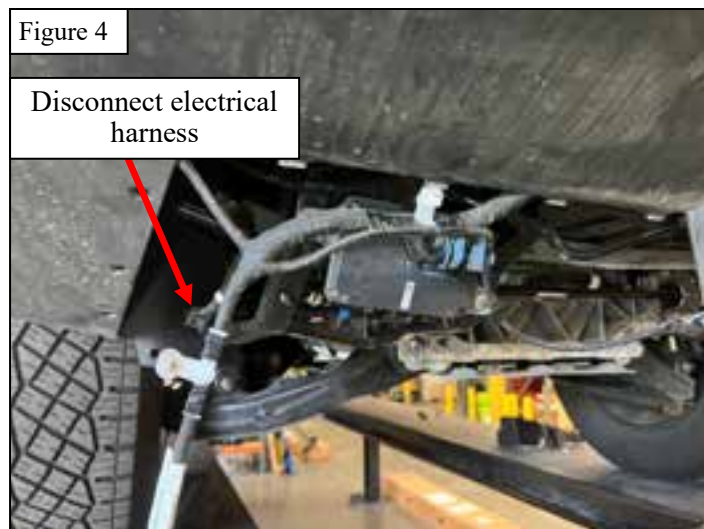
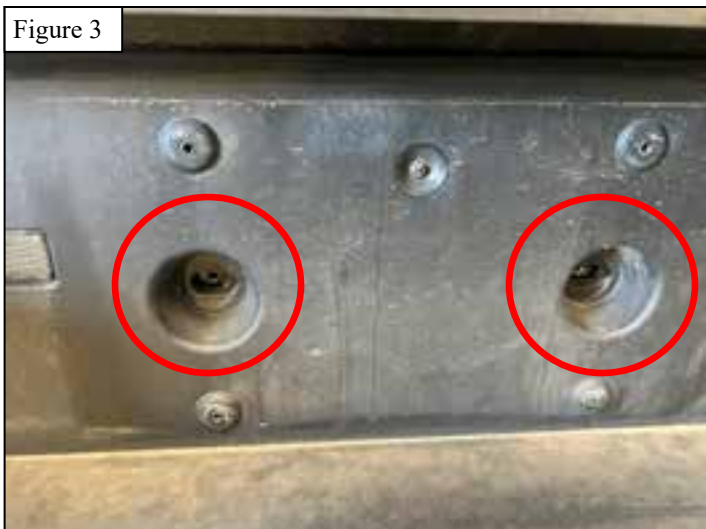


Figure 2

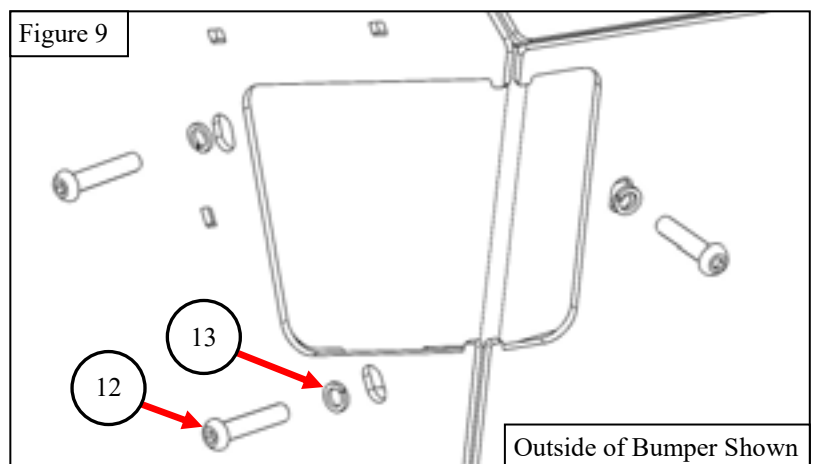
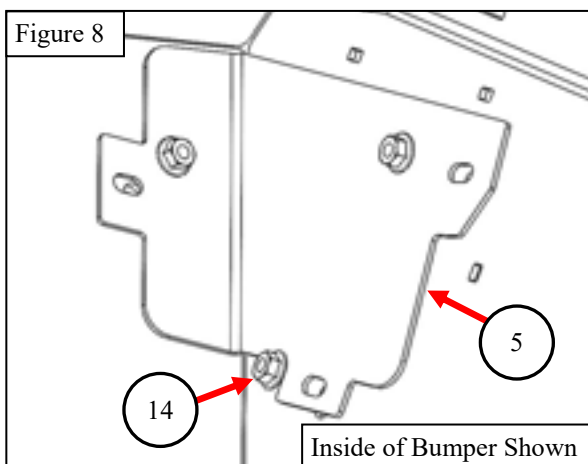
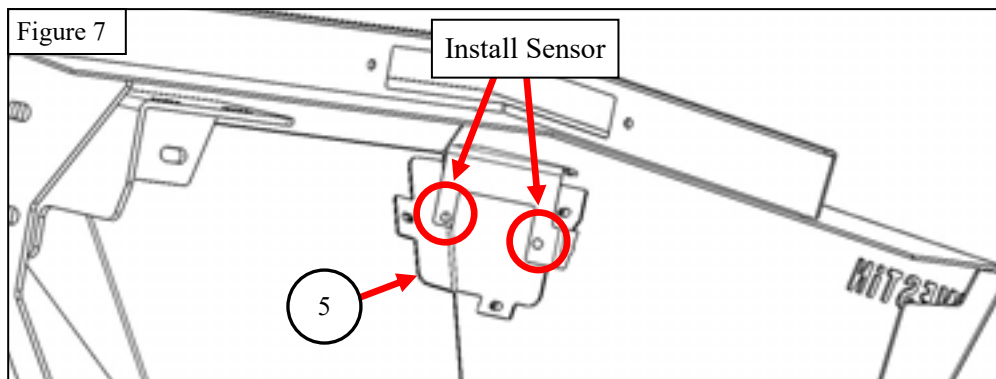

**WESTIN**

Westin Automotive Products, Inc.  
320 W. Covina Blvd  
San Dimas, Ca. 91773

6. Remove the license plate from the rear bumper and remove the two bolts that attach the rear bumper to the body. See **Figure 3**.
7. Remove the skid plate by locating and removing the nine bolts attaching the skid plate to the vehicle.
8. Before removing the rear bumper from the vehicle, disconnect the rear bumper's electrical harness connector by releasing the locking clip. See **Figure 4**.
9. Remove the rear bumper.
10. Remove the three parts topped with black foam. Locate and remove the bolts holding them in place. See **Figure 5**.

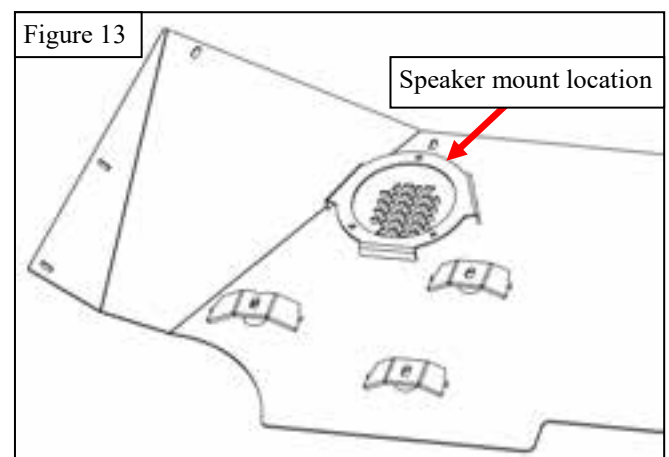
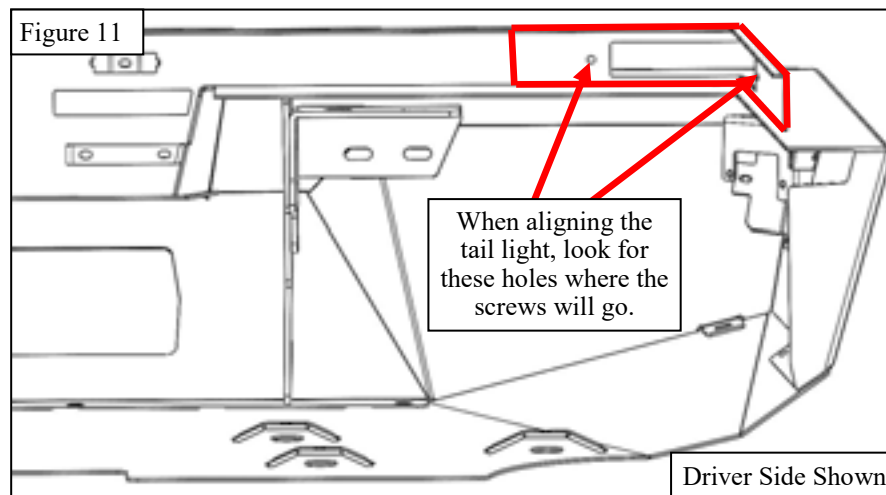


11. Locate and remove the sensor inside the bumper. Remove the two small screws located on the side of the sensor. See **Figure 6**.
12. Attach the sensor cover (**item 5**) onto the inside of the Pro-Series bumper using the M6 hardware (**items 12-14**). See **Figures 7-9**.
13. Attach the sensor removed in step 11 to the inside of the Pro-Series bumper using the M6 hardware (**items 12-14**). See **Figure 7**.





14. Remove the tail lights from the top corners of the rear bumper. Separate the tail lights from the bumper by cutting between the tail lights and the bumper. See **Figure 10**.
15. Drill two 1/4" holes on both sides of the tail lights. Place the tail lights on the inside of the Pro-Series rear bumper and mark each side using the holes on each side as a guide. Drill 1/4" holes in the marked locations. See **Figure 11**.
16. Attach the tail lights to the Pro-Series rear bumper using the M6 hardware (**items 12-14**). See **Figure 12**.
17. Remove the speaker from the skid plate and install it onto the Pro-Series skid plate using the M6 hardware. See **Figure 13**.



18. Remove the two license plate lights. For each light remove the three bolts circled in **Figure 14** below.
19. Install the license plate lights and rear license plate on the Pro-Series bumper using the M6 hardware (**items 12-14**). Location shown in **Figure 15**.
20. Tighten all M6 hardware to 5-7 ft-lbs.
21. Install the rear bumper wiring harness on the Pro-Series rear bumper connecting the tail lights, sensor, and license plate lights.

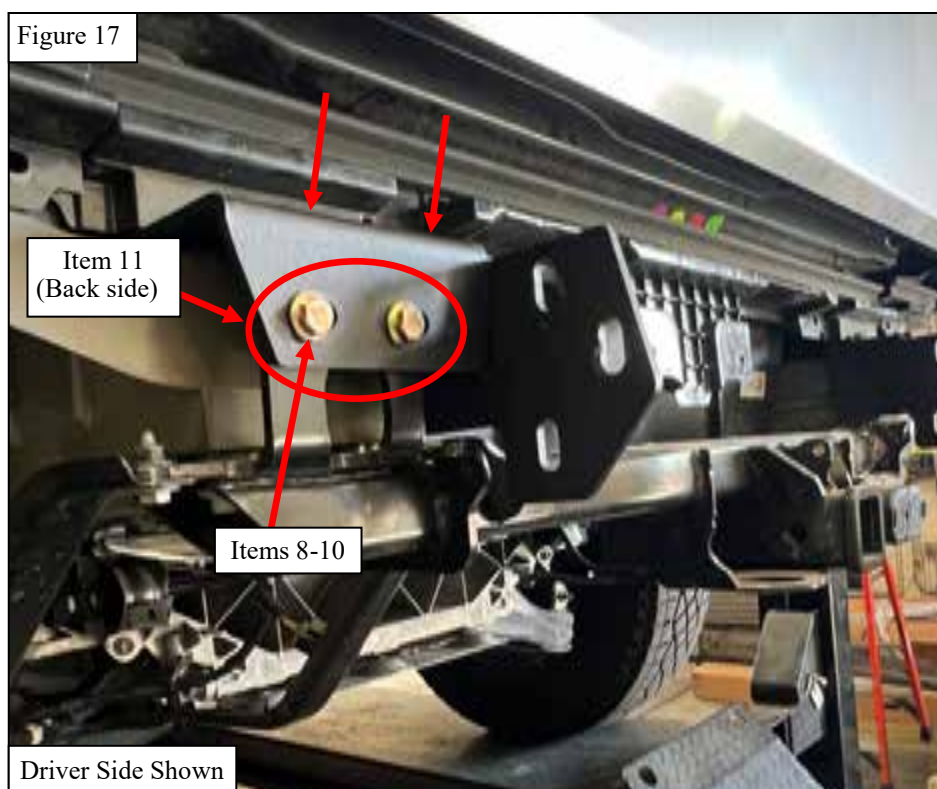
Figure 14



Figure 15



22. Starting on the driver side, locate and remove the two bolts circled in **Figure 16** below. Keep these bolts as they will be used to attach the Driver Mount Bracket (**item 3**).
23. Install the Driver Mount Bracket. Place the bracket so the top sits on the holes where the bolts were removed in the previous step. Use the bolts removed in the previous step to attach the top of the bracket to the vehicle. Use the M10 hardware (**items 8-11**) to attach the back of the bracket to the vehicle. Tighten the M10 hardware to 30-40 ft-lbs. See **Figure 17**.
24. Repeat steps 22 and 23 on the passenger side of the vehicle.



25. Slide the rear bumper onto the brackets and fasten using the M12 hardware (**items 6 and 7**). Tighten M12 hardware to 50-55 ft-lbs. See **Figures 18 and 19**.
26. Attach the Skid Plate (**item 2**) onto the bottom of the Pro-Series rear bumper and the vehicle. See **Figures 20 and 21**.
27. Reconnect the rear bumper wiring harness to the vehicle and speaker.
28. Using six of the bolts that were removed in step 7, attach the new skid plate onto the vehicle. Locations shown in **Figure 21**.
29. Tighten all M6 hardware to 5-7 ft-lbs.

Figure 18

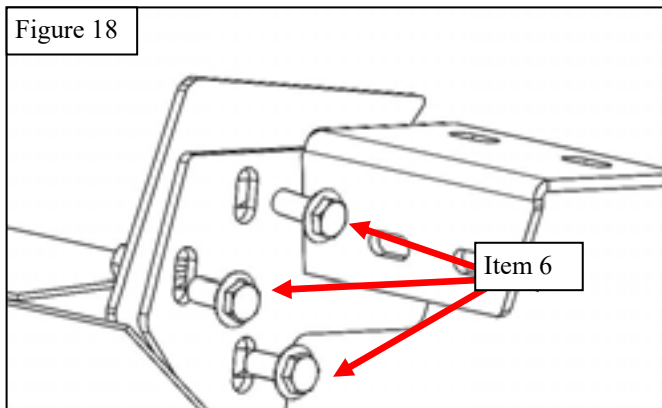


Figure 19

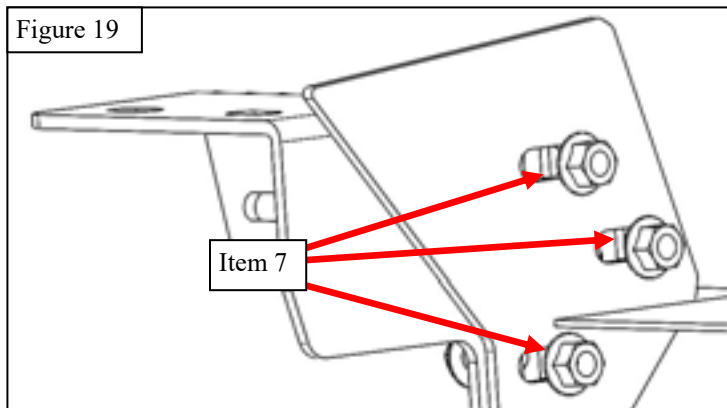


Figure 20

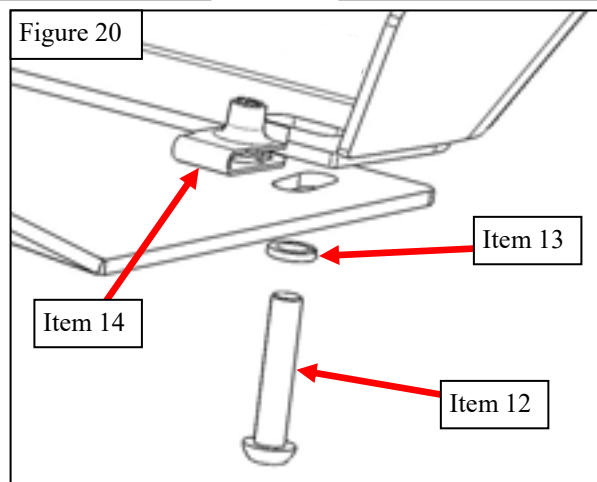
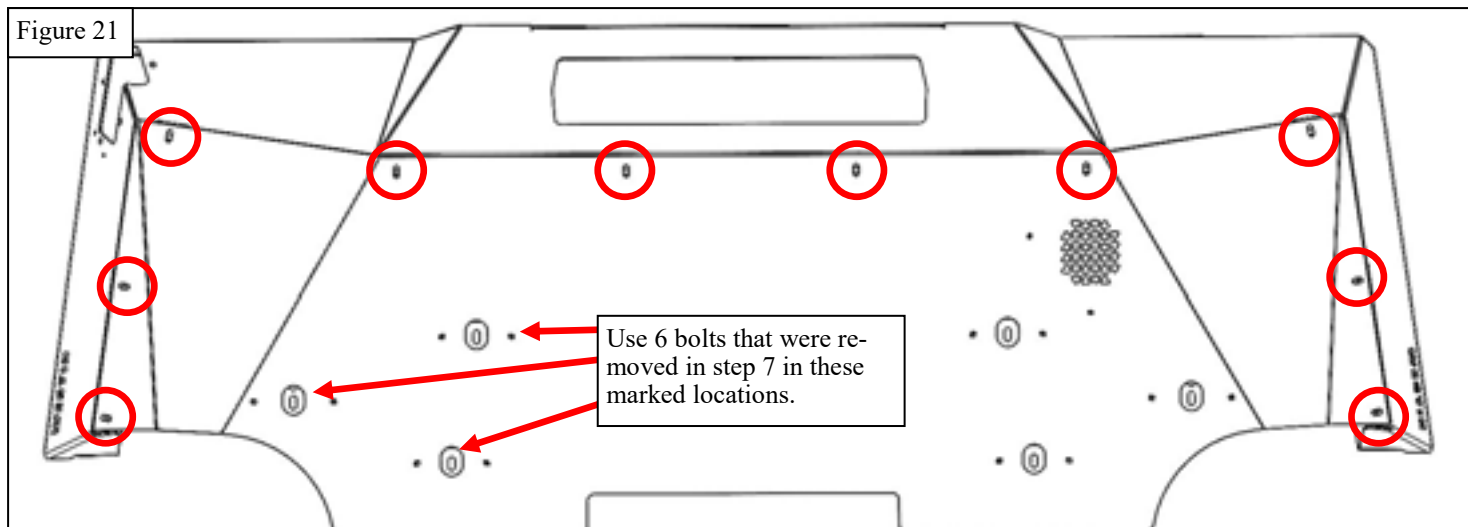


Figure 21



**WESTIN**

Westin Automotive Products, Inc.  
320 W. Covina Blvd  
San Dimas, Ca. 91773

Thank you for choosing Westin products  
for additional installation assistance please call  
Customer Service (800) 793-7846  
[www.westinautomotive.com](http://www.westinautomotive.com)



## INSTALLATION COMPLETE



### CARE INSTRUCTIONS

- REGULAR WAXING IS RECOMMENDED. DO NOT USE ANY TYPE OF POLISH OR WAX THAT MAY CONTAIN ABRASIVES.
- STAINLESS STEEL PRODUCTS CAN BE CLEANED WITH MILD SOAP AND WATER. STAINLESS STEEL POLISH SHOULD BE USED TO POLISH SMALL SCRATCHES.
- GLOSS BLACK FINISHES SHOULD BE CLEANED WITH MILD SOAP AND WATER.

**WESTIN** Westin Automotive Products, Inc.  
320 W. Covina Blvd  
San Dimas, Ca. 91773

Thank you for choosing Westin products  
for additional installation assistance please call  
Customer Service (800) 793-7846  
[www.westinautomotive.com](http://www.westinautomotive.com)



## WARNING



Failure to follow these instructions could lead to death, personal injury, and / or property damage.

Failure to follow these instructions could lead to death, personal injury, and / or property damage.

### FASTENERS:

All Westin supplied fasteners must be utilized and installed in accordance with the installation instructions and apply torque to the specifications as defined. **DOUBLE CHECK ALL FASTENERS BEFORE INITIAL USE, AND PERIODICALLY IN THE FUTURE TO ENSURE PROPER FUNCTION AND SAFETY.**

### DRILLING:

Most Westin products do not require drilling for installation. If drilling is defined as required, use caution when drilling a vehicle. **FAILURE TO REVIEW AN AREA TO BE DRILLED MAY RESULT IN PERSONAL INJURY AND/OR INJURY TO OTHERS AS WELL AS VEHICLE DAMAGE.**

### EYE PROTECTION:

**ALWAYS WEAR SAFETY GLASSES OR GOGGLES DURING THE INSTALLATION PROCESS TO AVOID PERSONAL INJURY.**

### MAXIMUM TOWING/CARRYING CAPACITY: (if applicable)

The Westin Receiver Hitches will have a visible tow rating label affixed directly on the product. User should never exceed the vehicle manufacturers maximum tow and weight rating regardless of the capacity of the hitch. **FAILURE TO FOLLOW THESE GUIDELINES WILL VOID THE WESTIN WARRANTY AND MAY RESULT IN PERSONAL INJURY AND/OR INJURY TO OTHERS AS WELL AS VEHICLE DAMAGE.**

### FOR CALIFORNIA RESIDENTS ONLY-PROP 65 WARNING:

Some products may contain chemicals such as DEHP, which can cause cancer, birth defects or other reproductive harm. For more info go to [www.p65warnings.ca.gov](http://www.p65warnings.ca.gov)



Westin Automotive Products, Inc.  
320 W. Covina Blvd  
San Dimas, Ca. 91773