



**18020/18021 Fuel Basket Check Valve Kit
INSTALLATION INSTRUCTIONS**

WARNING!

The fuel system is under pressure. Do not open the fuel system until the pressure has been relieved. Refer to the appropriate vehicle service manual for the procedure and precautions for relieving the fuel system pressure.

CAUTION:

Installation of this product requires detailed knowledge of automotive systems and repair procedures. We recommend that this installation be carried out by a qualified automotive technician.

Installation of this product requires handling of gasoline. Gasoline vapors are highly flammable. Ensure you are working in a well-ventilated area with an approved fire extinguisher nearby. Extinguish all open flames, prohibit smoking, and eliminate all sources of ignition in the area of the vehicle before proceeding with the installation.

Compatible Fuels:

Pump Gas
Race Gas
E85

Aeromotive system components are not legal for sale or use on emission-controlled motor vehicles.

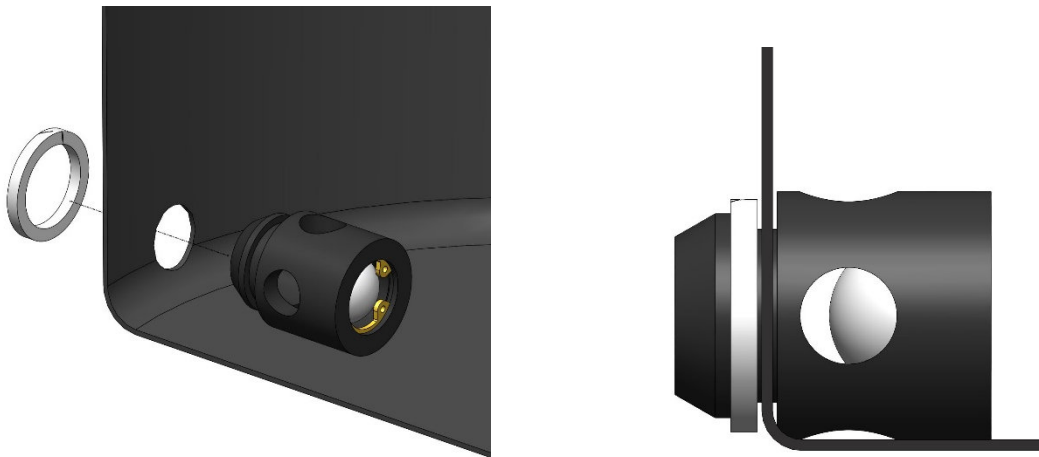
Parts Included:

4ea Aeromotive Basket Ball Check Assembly (18020) 5ea Basket Check Retaining Ring (18020) -OR- 5ea Aeromotive Basket Ball Check Assembly (18021) 6ea Basket Check Retaining Ring (18021) -OR- 10ea Aeromotive Basket Ball Check Assembly (18022) 11ea Basket Check Retaining Ring (18022) 1ea Gasket, 1/2" Thick (18022)	COMMON 1ea Gasket, 1/2" Thick (18020, 18021) 10ea 10-24 Nylon Locking Stainless Steel Nut 10ea #10 Nylon Washer
--	---

This product is intended to be installed and utilized for check valve replacement or upgrade of existing Aeromotive fuel pumps baskets.

The following steps are typical of the check valve installation:

1. Push the ball check valve assembly narrow end first through the holes in the check basket from the inside stopping when the basket wall is in the groove. Take care not to push the large end of the valve through the hole. NOTE: the valves are intended to be a tight fit in the basket hole and may require effort to get started.
2. Slip the retaining ring over the pointed end and seat in groove to retain the check basket wall.



3. When reinstalling the now checked basket into the fuel tank, the foam baffle should be inserted into the checked basket assembly such that the foam baffle is behind and around the check valves (not on top) – no notching is required.
4. Once the foam baffle and checked basket are installed in the tank, feel underneath the foam baffle and set the check valves as level and square as possible for best performance.



WARNING: This product can expose you to chemicals, including chromium, which is known to the State of California to cause cancer or birth defects or other reproductive harm. For more information, visit: www.p65Warnings.ca.gov

AEROMOTIVE, INC. LIMITED WARRANTY

This Aeromotive Product, with proof of purchase dated on or after January 1, 2003, is warranted to be free from defects in materials and workmanship for a period of one year from the original date of purchase. No warranty claim will be valid without authentic, dated proof of purchase.

This warranty is to the original retail purchaser and none other and is available directly from Aeromotive and not through any point of distribution or purchase.

If a defect is suspected, the retail purchaser must contact Aeromotive directly to discuss the problem, possible solutions and obtain a Return Goods Authorization (RGA), if deemed necessary by the company. Please call 913-647-7300 and dial option 3 for the technical service dept. All returns must be shipped freight pre-paid to the company and with valid RGA before they will be processed.

Aeromotive will examine any product returned with the proper authorization to determine if the failure resulted from a defect or from abuse, improper installation, misapplication or alteration. Aeromotive will then, at it's sole discretion, return, repair or replace the product.

If any Aeromotive product is determined defective, buyer's exclusive remedy is limited in value to the sale price of the good. In no event shall Aeromotive be liable for incidental or consequential damages.

Aeromotive expressly retains the right to make changes and improvements in any product it manufactures and sells at any time. These changes and improvements may be made without notice at any time and without any obligation to change the catalogs or printed materials.

Aeromotive expressly retains the right to discontinue at any time and without notice any Aeromotive product that it manufactures or sells.

This warranty is limited and expressly limits any implied warranty to one year from the date of the original retail purchase on all Aeromotive products.

No person, party or corporate entity other than Aeromotive shall have the right to: determine whether or not this Limited Warranty is applicable to any Aeromotive product, authorize any action whatsoever under the terms and conditions of this Limited Warranty, assume any obligation or liability of any nature whatsoever on behalf of Aeromotive under the terms and conditions of this Limited Warranty.

This Limited Warranty covers only the product itself and not the cost of installation or removal.

This Limited Warranty is in lieu of and expressly excludes any and all other warranties, expressed or implied. This Limited Warranty gives you specific legal rights, and you may also have other rights which vary from state to state.