



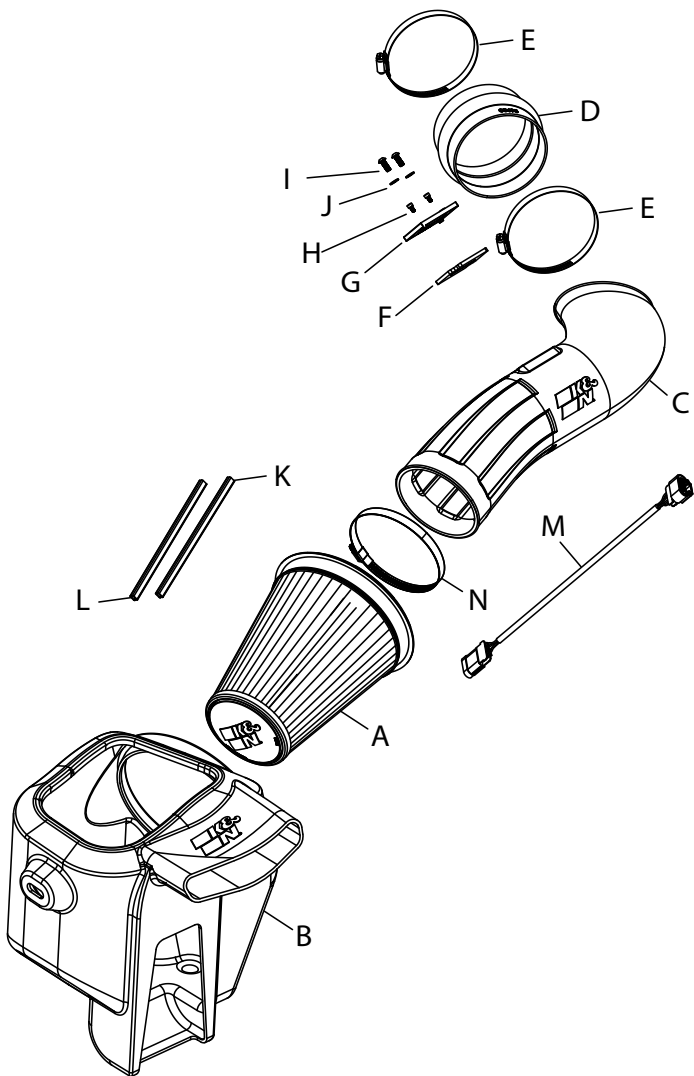
# INSTALLATION INSTRUCTIONS

Not legal for sale or use in California on any pollution controlled motor vehicle.

## 50-2613D FORD 2020-26 F250/F350 V8-6.7L TURBO DIESEL

### TOOLS NEEDED:

- Ratchet
- Extension
- #15 torx
- 13mm socket
- 10mm socket
- 8mm socket
- 7mm socket
- 10mm wrench
- 3mm allen key
- 4mm allen key
- Flathead Screwdriver



### PARTS LIST:

Description	Qty.	Part #	Description	Qty.	Part #	Description	Qty.	Part #
A AIR FILTER DRY	1	RU-3139HBK	F GASKET; PORON	1	09069	K CLIP; SNAP ON RED	1	088218
B AIR BOX	1	087642	G ADAPTOR; MAF SENSOR	1	21515-1	L CLIP; SNAP ON ORANGE	1	088219
C TUBE	1	087653	H BOLT; M4-.7 X 8MM	2	07733	M EXTENSION HARNESS	1	21787
D HOSE; HUMP 4.5"ID X 3"L	1	08695	I BOLT; M6-1 X 16MM	2	07730	N HOSE CLAMP; #88 BLK	1	KITHS88K
E HOSE CLAMP; #72 BLK	2	08671KA	J WASHER; 6MM FLAT	2	08269			

If you need any assistance please call 1-800-858-3333 to speak with a representative in our Customer Service Center before returning the product.

NOTE: FAILURE TO FOLLOW INSTALLATION INSTRUCTIONS AND NOT USING THE PROVIDED HARDWARE MAY DAMAGE THE INTAKE TUBE, THROTTLE BODY AND ENGINE.

### TO START:

1. Turn off the ignition and disconnect the negative battery cable.  
**NOTE: Disconnecting the negative battery cable erases pre-programmed electronic memories. Write down all memory settings before disconnecting the negative battery cable. Some radios will require an anti-theft code to be entered after the battery is reconnected. The anti-theft code is typically supplied with your owner's manual. In the event your vehicles anti-theft code cannot be recovered, contact an authorized dealership to obtain your vehicles anti-theft code.**



2. Disconnect the mass air sensor electrical connection and unhook the wiring harness from the air filter housing.



3. Loosen the hose clamp that secures the factory intake tube to the turbo inlet pipe.



4. Release the three clips that secure the air filter housing lid and then remove the lid, intake tube, and air filter from the vehicle.



5. Remove the pin that secures the fresh air intake duct, then remove the duct from the vehicle.



6. Remove the bolt securing the air filter housing, then remove the housing from the vehicle.  
**NOTE: K&N Engineering, Inc., recommends that customers do not discard factory air intake.**





7. Remove the two bolts securing the air filter housing bracket to the inner fender, then remove the bracket from the vehicle.



8. Attach the filter clips to the pleats on the air filter, align them and push down. Passenger side filters, place orange clip on top and red on bottom.



9. Install the K&N air filter partially into the K&N air filter housing. Install the housing and filter assembly into the vehicle, then secure the housing to the inner fender with one of the bolts from step #7. Do not tighten bolt yet.



10. Install the provided gasket onto the K&N mass air sensor adapter, then remove the mass air sensor from the factory housing and install it into the K&N adapter using the provided hardware.



11. Install the mass air sensor assembly into the K&N intake tube so that the opening of the sensor is towards the filter end of the tube. **NOTE: Make sure the sensor is going in the correct direction.** If it is not installed in the correct orientation, remove the adapter bolts and spin 180 degrees then reinstall the bolts.



12. Install the hump hose provided all the way onto the K&N intake tube and slide back with the hose clamps.



13. Install the K&N intake tube into the air filter and align with the turbo inlet. Make sure the bead on tube is locked into filter and tighten filter clamp. **NOTE: Filter base can rotate in housing, allowing the tube to sit properly in hump hose on the turbo.**



14. Slide the coupler onto the turbo inlet, adjust the assembly for best fit, then tighten the clamps on inlet coupler.



15. Once everything is secure, tighten the bolt from step #9.



16. Using the provided extension harness, reconnect the mass air sensor electrical connection.



17. Reconnect the vehicle's negative battery cable. Double check to make sure everything is tight and properly positioned before starting the vehicle.

18. It will be necessary for all K&N® high flow intake systems to be checked periodically for realignment, clearance and tightening of all connections. Failure to follow the above instructions or proper maintenance may void warranty.

**ROAD TESTING:**

1. Start the engine with the transmission in neutral or park, and the parking brake engaged. Listen for air leaks or odd noises. For air leaks secure hoses and connections. For odd noises, find cause and repair before proceeding. This kit will function identically to the factory system except for being louder and much more responsive.

2. Test drive the vehicle. Listen for odd noises or rattles and fix as necessary.

3. If road test is fine, you can now enjoy the added power and performance from your kit.

4. K&N Engineering, Inc., requires cleaning the intake system's air filter element every 50,000 miles. When used in dusty or off-road environments, our filters will require cleaning more often. We recommend that you visually inspect your filter once every 25,000 miles to determine if the screen is still visible. When the screen is no longer visible some place on the filter element, it is time to clean it. To clean, purchase our Synthetic Filter Cleaner, part number 99-0624 and follow the easy instructions.