

2015+ Colorado/Canyon Hornet Light Installation Instructions

Congratulations on your purchase of a high quality PUTCO product. Should you need any application or technical assistance, feel free to call us at: 1-800-247-3974

Monday-Friday 8:00 a.m. - 5:00 p.m. (Central Standard Time)

Contact your PUTCO dealer for other quality accessories.

Please read all instructions before installation and to check to see that all parts are included.

KIT CONTENTS:	
Description	Qty.
Bracket	1
10-32 Bolt	4
10-32 Nylock Nut	4
Foam Gasket	1
12V Rocker Switch	1

Tools Needed:

- 1/8" Allen Wrench
- 3/8" Wrench
- T15 Torx Screw Driver

Installation Instructions:

1. Remove items from packaging. Check to see if all parts from above table of contents are included.
2. With a T15 Torx screw driver, remove and keep the two screws holding in the 3rd brake light (**Figure 1**).
3. Remove the 3rd brake light by pulling outwards from the bottom of the light and unplugging the 3rd brake light from its harness.
4. Install the gasket onto the side of the bracket that will be facing into the truck. This can be seen in **Figure 2**.

NOTE: If you have purchased a 24" Hornet light, at this point proceed to the other set of instructions included.

5. At this point, install the hornet light on to the mounting bracket using the 10-32 nuts and bolts. (**Figure 1**)
6. Cut a small slot in the gasket on the top side near the end of the center hole on the bracket to allow for the wire to feed through. (**Figure 3**)

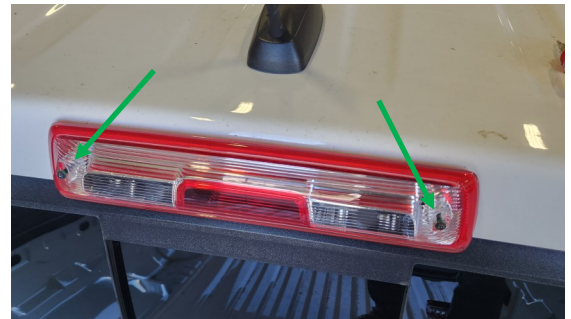


Figure 1—Uninstalling 3rd brake light



Figure 2—Installing gasket.

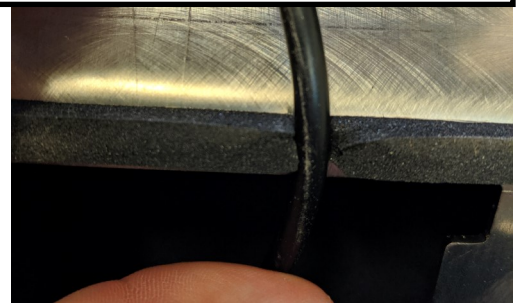


Figure 3—Cutting slot in gasket.

Putco guarantees its Stainless Steel and Aluminum products against defects in workmanship and material for as long as you own your vehicle. All painted products have a 90 day warranty on the painted surface. Any defects resulting from faulty material or workmanship will be warranted by Putco and repaired or replaced at our discretion. Putco assumes no extra labor costs. Damages caused by freight carriers, improper installation, misuse, collision, or neglect will not be warranted by Putco.

Installation Instructions:

7. Feed the wire through the hole behind the 3rd brake light and route it through the cab to a suitable switch mounting location. **(Figure 4)**

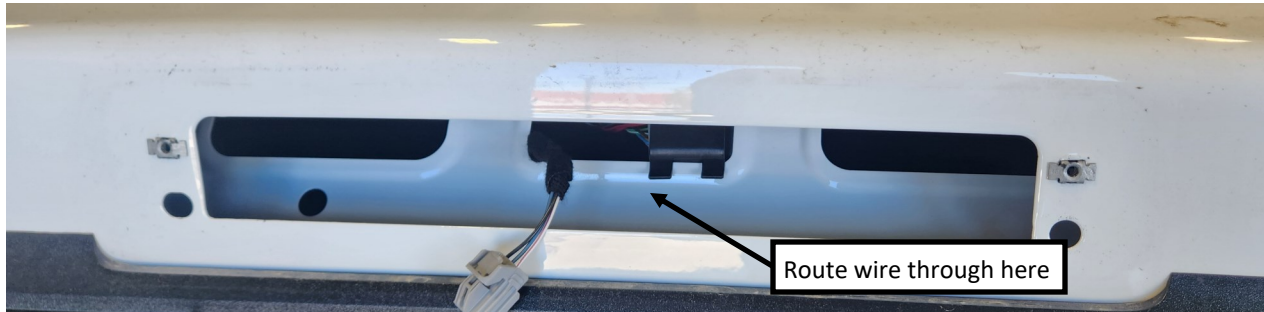


Figure 4—Wire routing.

8.



Figure 5—Bracket mounting.

9. Position the 3rd brake light on the bracket and reinstall the brake light taking care to reconnect the harness and not pinch the Hornet light cable. Installing and slightly tightening the screws before fully tightening aids in ease of installation. **(Figure 5)**

Putco guarantees its Stainless Steel and Aluminum products against defects in workmanship and material for as long as you own your vehicle. All painted products have a 90 day warranty on the painted surface. Any defects resulting from faulty material or workmanship will be warranted by Putco and repaired or replaced at our discretion. Putco assumes no extra labor costs. Damages caused by freight carriers, improper installation, misuse, collision, or neglect will not be warranted by Putco.

Installation Instructions:

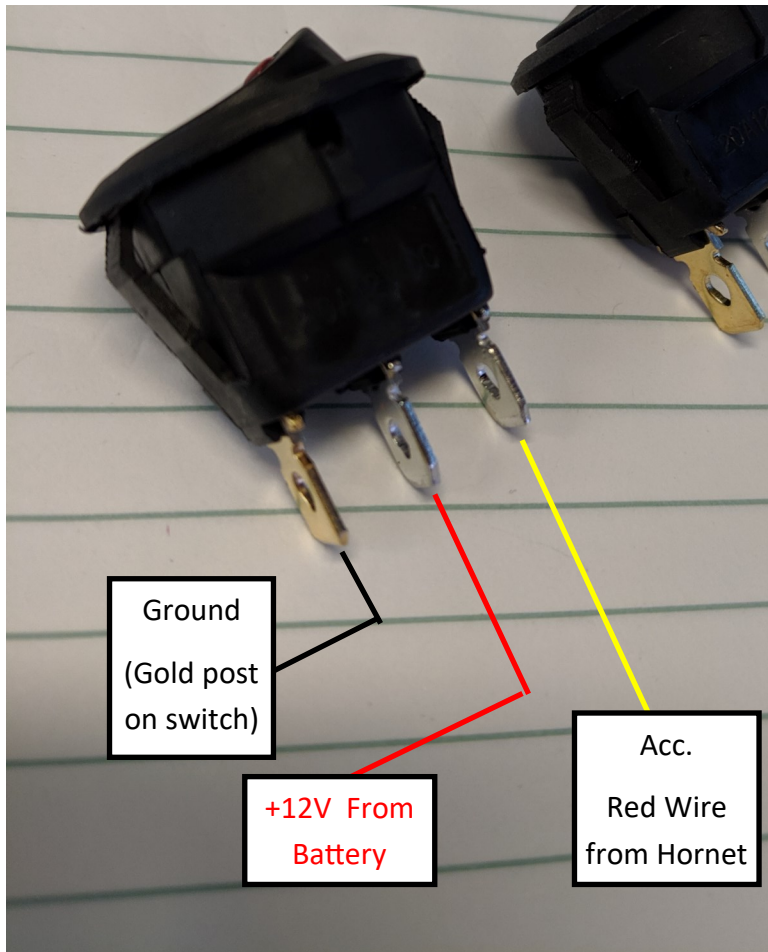


Figure 7— Switch wiring diagram.

NOTE: When the switch is configured correctly it should function as follows: The primary switch, or the switch hooked up to the red wire, controls power to the Hornet light. This switch will turn the light on and off. To switch modes, the primary switch must be in the ON position. While the Hornet light is receiving power via the red wire, give 12V power to the yellow wire. If it does not change modes, check to make sure that the light is receiving power from the primary switch. The light will remember the mode even with the switch turned off.

Putco guarantees its Stainless Steel and Aluminum products against defects in workmanship and material for as long as you own your vehicle. All painted products have a 90 day warranty on the painted surface. Any defects resulting from faulty material or workmanship will be warranted by Putco and repaired or replaced at our discretion. Putco assumes no extra labor costs. Damages caused by freight carriers, improper installation, misuse, collision, or neglect will not be warranted by Putco.