



INSTALLATION GUIDE

Intercooler Kit, Fits 2010–2012 Dodge Ram 6.7L Cummins
SKU: MMINT-RAM-10

TABLE OF CONTENTS

- Pg 1** RESOURCES AND CONTACT INFORMATION
- Pg 2** IMPORTANT SAFETY INFORMATION
REQUIRED TOOLS
INSTALLATION INSTRUCTIONS
- Pg 6** DISPOSAL INSTRUCTIONS
WARRANTY INFORMATION

RESOURCES & CONTACT



CALL 1-877-GOMISHI

CUSTOMER SERVICE HOURS: MON-FRI 8:30AM-5:00PM EST



MISHIMOTO



GOMISHIMOTO



MISHIMOTO



WEBSITE

WWW.MISHIMOTO.COM



ENGINEERING BLOG

WWW.MISHIMOTO.COM/ENGINEERING

IMPORTANT SAFETY INFORMATION

- › Mishimoto recommends you use safety glasses and protective gloves during the installation of our products
- › Raise vehicle only on jack stands or on a vehicle lift
- › Allow vehicle to cool completely prior to attempting installation
- › Do not run the engine or drive the vehicle while overheating; serious damage can occur
- › Please dispose of any liquids properly
- › Mishimoto is not responsible for any vehicle damage or personal injury due to installation errors, misuse, or removal of Mishimoto products
- › If you need any assistance while installing our products, reach out to our Customer Service Team at 1-877-GOMISHI

SUPPLIED PARTS

- | | |
|--------------------------------------|--|
| (1) MISHIMOTO INTERCOOLER | (2) MISHIMOTO INTERCOOLER PIPES |
| (1) METAL SHROUD | (4) MISHIMOTO SILICONE BOOTS |
| (2) M6 X 16MM HEX HEAD FLANGED BOLTS | (5) 4" CONSTANT TENSION T-BOLT CLAMPS |
| (2) M6 X 30MM HEX HEAD FLANGED BOLTS | (3) 3.25" CONSTANT TENSION T-BOLT CLAMPS |
| (2) M6 OVERSIZED FLAT WASHERS | |

INSTALL TIME: 5 HOURS

INSTALL DIFFICULTY: 

INSTALLATION INSTRUCTIONS

1. The intercooler installation requires the removal of the A/C condenser. Before the condenser can be removed, the refrigerant must be recovered from the A/C system by a licensed technician. This can be performed by most mechanics.

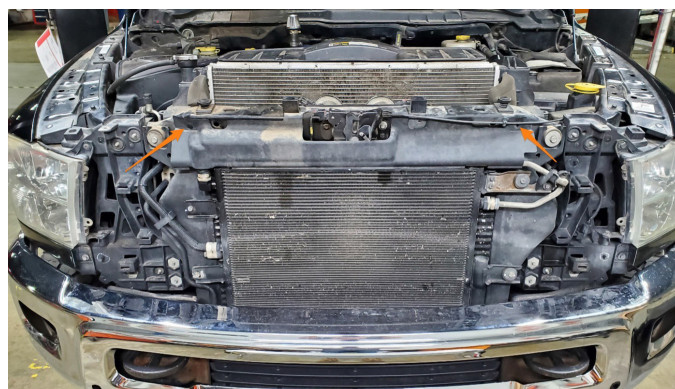
2. Remove the four (4) tree clips securing the shroud above the grille and remove the shroud from the vehicle.



3. Remove the four (4) bolts securing the grille to the vehicle. Then, remove the grille from the vehicle by pulling it away from the vehicle to disengage the clips securing the bottom.



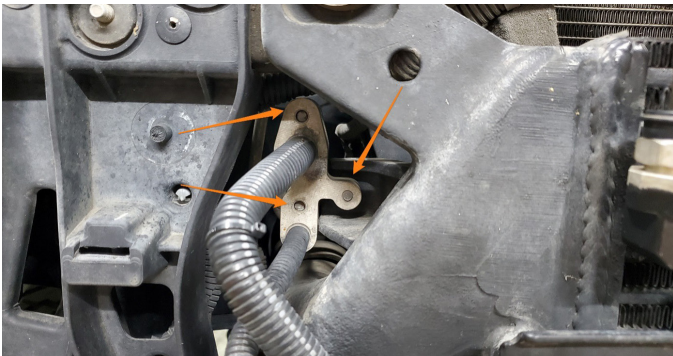
4. Remove the two (2) tree clips securing the shroud to the upper radiator support and slide it along the hood release cable to position it out of the way.



Continued on next page



5. BE SURE THE REFRIGERANT HAS BEEN PROPERLY RECOVERED BEFORE PREFORMING THIS STEP. Remove the two (2) bolts securing the junction of the A/C condenser lines. Then, remove the one (1) bolt securing the junction to the intercooler.

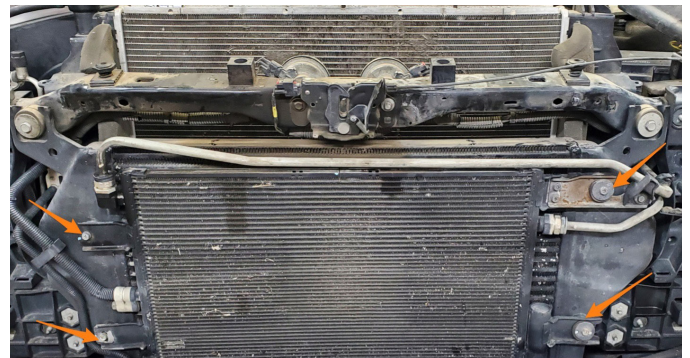


6. Place shop towels or a container under the transmission cooler line connections to catch the fluid that will leak out. Then, remove the dust covers from the transmission cooler line connections and disengage the connections. Properly dispose of any transmission fluid.



7. Remove the front bumper from the vehicle by removing the two (2) nuts and bolts on each side of the vehicle that mount the bumper/tow hooks to the frame.

8. Remove the four (4) bolts that secure the A/C condenser and transmission cooler to the intercooler and remove the assembly and lines from the vehicle.



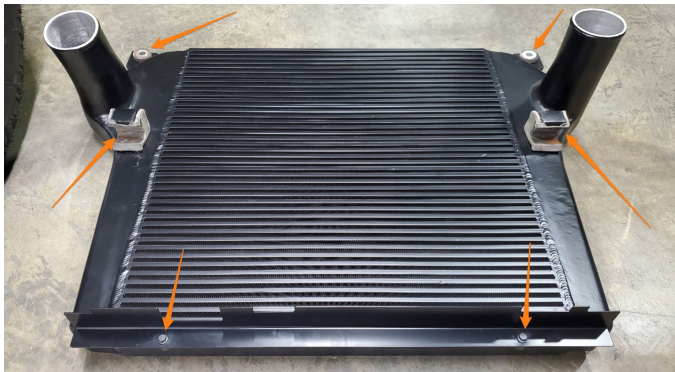
9. Remove the clamps that secure the intercooler pipe boots to each side of the intercooler.

10. Remove the two (2) bolts that secure the intercooler to the upper radiator support and remove the intercooler from the vehicle.

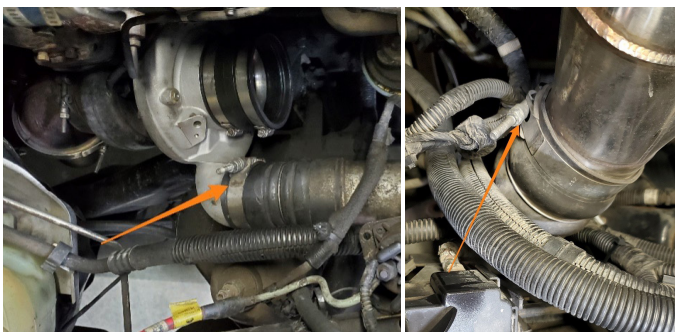


11. Transfer the rubber grommets from the stock intercooler to the Mishimoto intercooler and install the supplied metal shroud with the two (2) supplied M6 x 16mm bolts, as shown below. (Image on the next page)

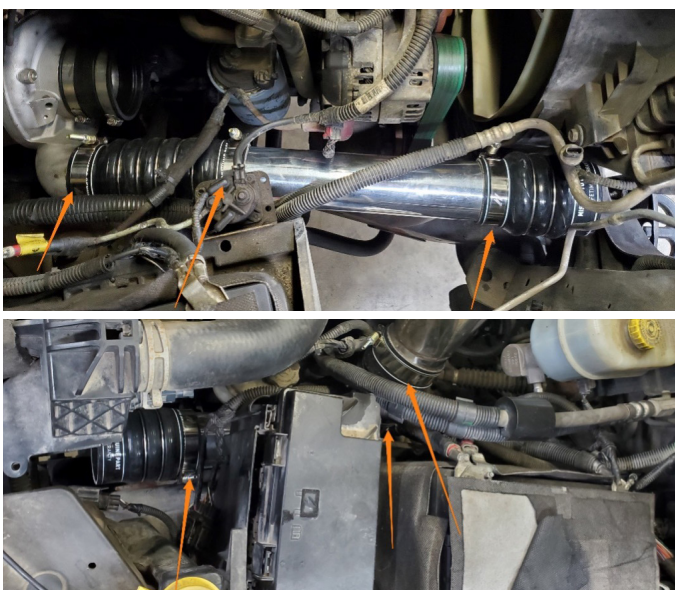
Continued on next page



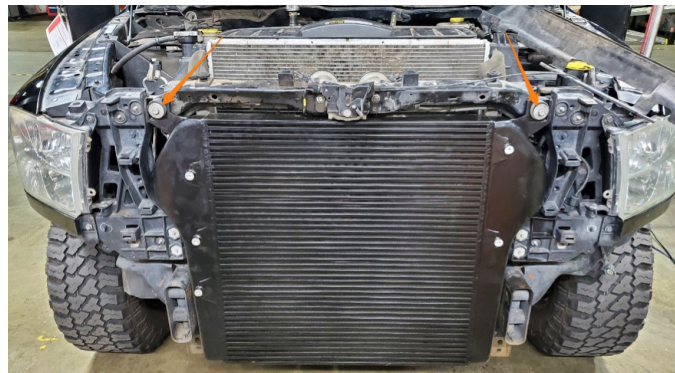
12. Remove the clamps securing the stock intercooler pipe boots to the turbo and the intake elbow, and remove the stock pipes and boots from the vehicle.



13. Install the Mishimoto boots and intercooler piping onto the vehicle with the supplied clamps, as shown below.



14. Place the remaining supplied clamps over the open ends of the intercooler boots and install the Mishimoto intercooler onto the vehicle and into the Mishimoto boots. Then, tighten all the clamps and secure the intercooler to the vehicle using the supplied M6 x 30mm bolts and the supplied M6 oversized flat washers.

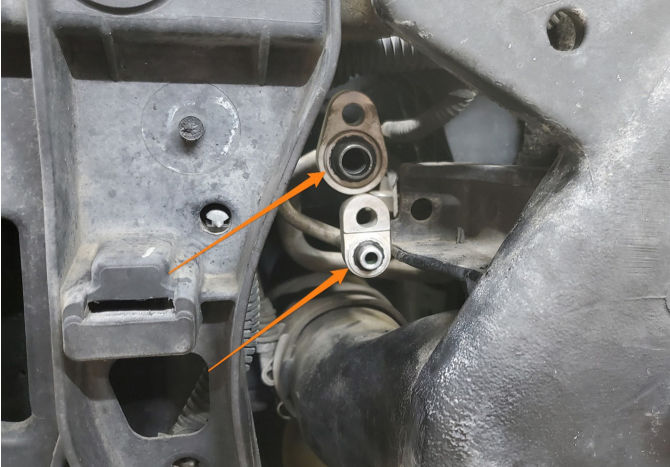


15. Reinstall the A/C condenser/transmission cooler and lines and secure them to the intercooler with the four (4) bolts that were removed in step 8.



16. Reconnect the transmission cooler lines and reinstall the dust caps onto the fittings. Then, replace the seals at the A/C condenser line junction with new seals and reconnect the A/C condenser lines with the two (2) bolts removed in step 5. The bolt that mounted the junction to the stock intercooler will not be reused. (Image on the next page)

Continued on next page



17. Reinstall the bumper, plastic shrouds, & grille by reversing the removal steps. Check the transmission fluid level before driving the vehicle and top off if needed. The A/C system can be recharged by most mechanics.

Congratulations! You have finished your installation.

DISPOSAL INSTRUCTIONS

- › Do not dispose of any product as unsorted municipal waste. Use separate collection facilities. Contact your local authority for information regarding the collection systems available.
- › Never improperly dispose of any coolant, oil, or other chemicals.

WARRANTY INFORMATION



- › All claims must be accompanied with a picture of the Mishimoto product showing the issue for which the claim is being submitted.
- › Mishimoto asks that the customer inspect their purchased item for any damage immediately upon arrival.
- › Any product deemed dead on arrival (DOA) must be claimed within 14 business days of delivery. Claims outside of this time frame will not be covered under the Mishimoto Lifetime Warranty.
- › This warranty does not include payment and/or reimbursement of the cost of labor in connection with the removal of any product returned pursuant to the warranty policy or in connection with the installation of any replacement items provided under the warranty policy.
- › Mishimoto has the right to refuse a claim at any time.

- › When Mishimoto accepts a claim, Mishimoto retains full discretion to choose if it will: (i) repair or replace purchaser's original Mishimoto product; (ii) replace purchaser's original Mishimoto product with the most current available model; or (iii) provide the purchaser with a gift card redeemable on Mishimoto.com in the amount of the original purchase price of the original Mishimoto product. The provision of a replacement of a Mishimoto product is subject to availability and Mishimoto retains the right to substitute any warranty claim item with a comparable item or credit at any time.
- › If Mishimoto determines that it will provide a replacement item in connection with a claim under this warranty policy, and such item is out of stock, Mishimoto will place the customer on backorder and ship the replacement product to the purchaser once it becomes available.
- › Mishimoto is not liable for incorrect shipments in connection with a claim if a claim form is completed incorrectly, or if a model number is not included in a claim.
- › If you have a vehicle equipped with an automatic transmission, please make sure to specify this within the text box on the claim form. Mishimoto is not responsible for incorrect replacement shipments if transmission type is not indicated.



WARNING
Cancer and
Reproductive Harm
www.P65Warnings.ca.gov

This product can expose you to chemicals which are known to the state of California to cause cancer. For more information visit: www.p65warnings.ca.gov