



## advanced FLOW engineering

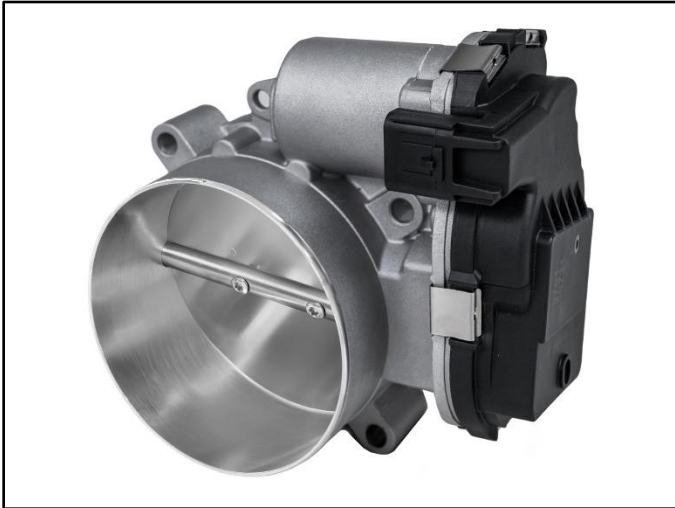
### Instruction Manual P/N: 46-39114

#### 97mm Throttle Body for Dodge/Jeep/RAM V8-6.2L (sc)

Dodge Charger  
Dodge Durango  
Ram 1500 TRX

2015-2023  
2021-2025  
2021-2024

Dodge Challenger  
Jeep Grand Cherokee  
2015-2023  
2018-2021



Qty.	Part Description
1	97mm Throttle Body

- Please read the entire instruction manual before proceeding.
- Ensure all components listed are present.
- For technical support please call 951-493-7185.
- Ensure you have all necessary tools before proceeding.
- Ensure that your vehicle is cooled off before proceeding.
- Retain factory parts for future use.

1. Disconnect the battery.
2. Remove the air intake tube from the vehicle.
3. Disconnect the electrical connector from the factory throttle body.
4. Remove the four (4) screws retaining the throttle body. Save for reinstallation.
5. Remove the factory throttle body.
6. Clean the gasket surface at the supercharger and replace the factory gasket if necessary (not supplied).
7. Install the supplied aFe 97mm Throttle Body onto the supercharger using the four (4) factory screws removed in Step 4. Tighten to factory specifications (10nm or 89 in. lbs.).
8. Connect the electrical connector to the aFe 97mm Throttle Body.
9. Install the air intake tube back into the vehicle.
10. Reconnect the battery. A scan tool may be used to perform an ETC relearn.
11. Installation is now complete.

**NOTE: Check all screws, clamps, and connectors are secure after 100-200 miles**