



INSTALLATION INSTRUCTIONS

Rear Stabilizer Bar

2021 Only—Ford Bronco



Number	Part Name	Quantity
1	Sway Bar	1
2	D - Bushing	2
3	U-Plate	2
4	U-Plate Backing Plate	2
5	Endlink	2
6	Frame Mount (Left)	1
7	Frame Mount (Right)	1
8	Collar Clamp Set	1
9	Hardware Packet	1
10	Wired Nut Plate	2

General Notes:



These instructions are meant to be a general guide for installing Hellwig Products Co. sway bars. Hellwig Products Co. Inc. assumes no liability for the actual installation process. Consumers should apply common automotive safety practices when working on any vehicles. DO NOT put yourself in a position where if the vehicle should move unexpectedly, you may be seriously hurt.

Hellwig suspension products are designed for ease of installation with standard tools. However, access to a jack, jack stands, and work lights may provide added assistance during your installation. As described in Hellwig installation instructions, many fasteners require proper tension or torque. Use of a torque wrench will verify proper torque for this requirement.

- To ease installation and to properly adjust bar, the weight of the vehicle must be on the suspension, as if driving down the road. Do not Raise Vehicle by frame.
- Before installation, set the E-brake and place wheel chucks under the tires in the appropriate locations to prevent the vehicle from rolling away.
- If you're not using a 4 post lift when raising the vehicle off the floor to install the anti-sway bar, always fully support the vehicle with jack stands. Ensure that the jack stands are securely positioned, and are rated at or above the weight of the vehicle.
- 2 post lifts are not recommended as the weight of the vehicle must be on the suspension.
- Don't forget to lube all bushings and end links.
- Always use impact grade sockets with air ratches or impact drivers.
- Holes Are Producing an Interference – apply torque to the nut.
- Nut and Bolt Head are Different Diameters or Shapes – apply torque to the side with the smaller bearing face. This also applies when the hole diameters are different.
- When Clamping Two Different Materials Together – It is always better to apply torque on the component that is against the material with a lower frictional coefficient.
- Long Bolts Are Being Used – When torque is applied to the head of a very long bolt, you may see the effects of torsional wind-up. Applying torque to the nut in this situation will help to avoid that issue.
- There will be many instances where you can apply torque to either the nut or the bolt head. But if one of the above situations applies, remember to follow the guidelines for a better fit and more durable installation

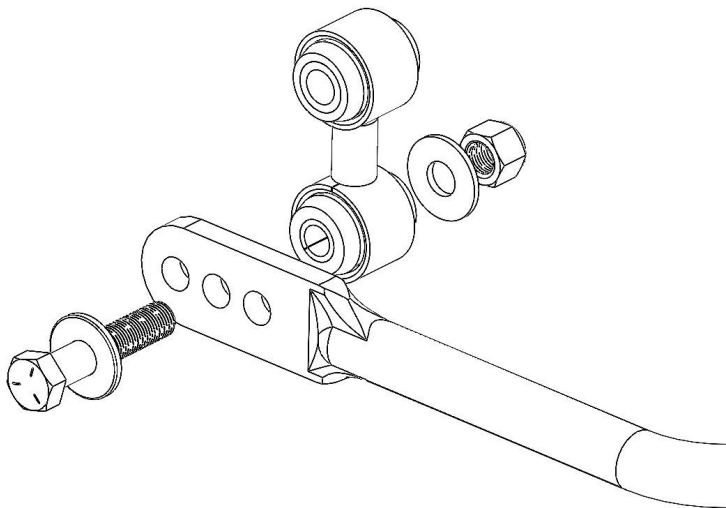


Step 1: Assemble End Links

Insert hourglass bushing into end link tubed ends.

Insert spacer tubes into previously inserted hourglass bushing.

Note: A vise and soap/lubrication may help the insertion.



Step 2: Mount End Link on Sway Bar End

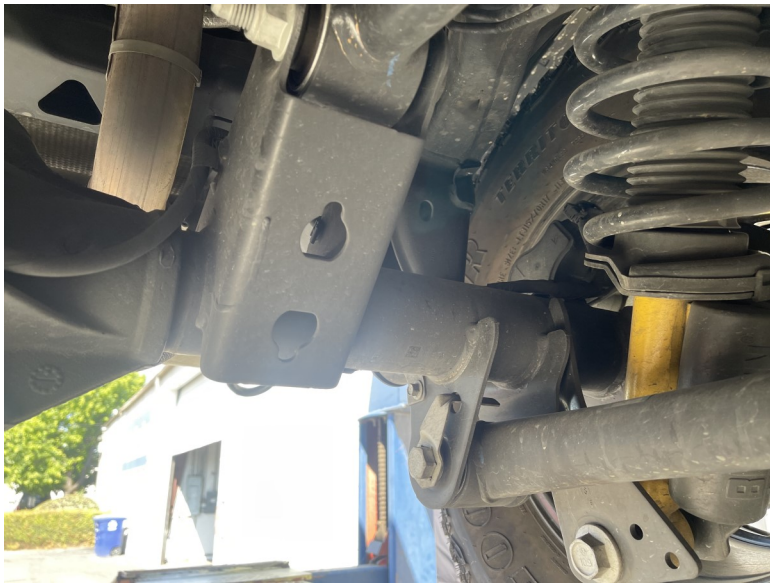
Using the Provided bolts (1/2" – 2.5 Length) and washers mount the end link on the inside of the sway bar. Start with the middle holes as this will help locate the mounting tab in future installation steps. Do not fully tighten, instead allowing the end link to rotate under friction.

Note: Driver Side Shown



Step 3: Grease Sway Bar Bushings

Utilizing the provided grease packet, coat the internal surface of both d-bushings.



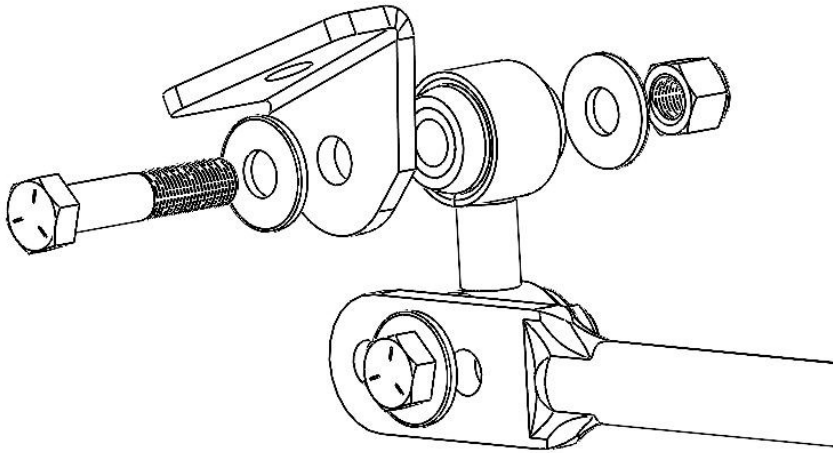
Step 4: Mount Sway Bar

Utilizing the provided u-plates and backing plates mount the bar to the rear axle. The backing plate should be sandwiching the axle mounts. Use the supplied bolts, locking washers and flat washers for assembly.

Ensure bar is centered on axel prior to tightening.

Unlike the OEM rear sway bar, the Hellwig sway bar hump runs below the driveline. Ensure the bar is mounted correctly before continuing with the installation.





Step 5: Locating Frame Mount Area

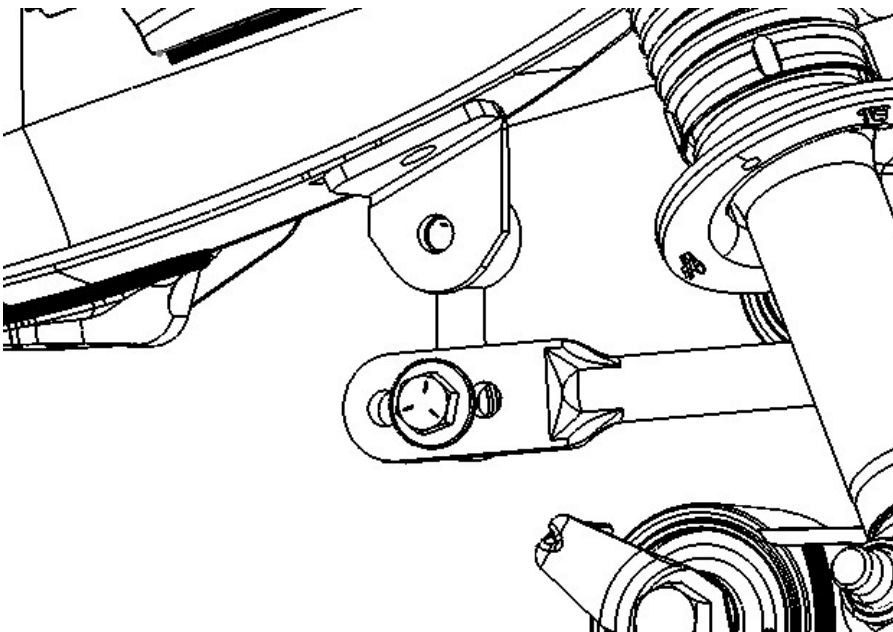
A template has been provided to indicate the approximate location of the end link mount. Although depending upon the vehicle configurations (2-Door or 4-Door) **Hellwig advises bringing the sway bar arms as close to parallel with the ground with the end links being vertical.**

Mock up the bracket as shown with end link. Allow the supplied mounts to come in contact with the frame and lay flatly. (Drivers side indicated in the diagram.)

Note: The bracket has changed slightly. Refer to diagram for updated bracket iteration and styling.

Mark the hole position on the frame. Repeat on opposite side.

Using a drill bit or unibit, drill into the frame producing a 1/2" hole.





Step 6: Insert Wired Frame Nut

The provided wire frame nut will require multiple bends to be made to be fed through the frame. Find the insertion point of the frame just within the lower 4-Link mount. Fish the wired frame nut backward toward the previously drilled hole.

Note: Passenger Side skid plate bolt will need to be backed off to gain clearance for wired nut plate.

Note: Utilize an Allen wrench to insert through the frame and into the wire nut to flatten against the frame. This will help threading the bolt.

Take the bolt, black washer and the frame mount, applying the thread locker to thread prior, and tighten against the bottom of the frame. Repeat for the opposite side of vehicle. Ensure that the frame mount drop down runs in parallel to the vehicle. Torque the bolt to 60 ft/lb. Repeat on opposite side.

Secure and cut any excess portion of wire. Leave enough wire to aide future disassembly or re-assembly.



Step 7: Mount End Link to Frame Mount

Mount the upper end link to the inside of the drop-down mount. Mount using the supplied bolts and washers. Repeat for opposite side.

Step 8: Install Collar Clamps

Add the provided collar clamps to the side of the bar, flatly against the rubber bushing. This will eliminate the bar walking side to side during articulation.

Step 9: Tighten and Check Installation

Tighten and torque the 4 bolts mounting the sway bar to the axle to 30 ft-lbs.

Tighten the 4 end link bolts until the bushing is significantly preloaded and seated to against the internal spacer tube. The threaded nut should no longer be able to turn upon clamping against the spacer tube.





1. **Fasteners:**

All Hellwig supplied fasteners must be utilized and installed in accordance with the installation instructions and apply torque to the specifications as defined.

2. **Modification:**

Do not attempt to modify the vehicle or the Hellwig product you are installing. If a problem is encountered, stop and call Hellwig Products (1-800-367-5480) for support. Hellwig Products Company will not be responsible for any damage or injury resulting from any modification or alteration.

Do not use this document for custom fabrication, as it may not show all parts or structural components.

2. **Drilling:**

Most Hellwig products do not require drilling and or tapping for installation. If drilling is defined as required, use caution when drilling a vehicle. Failure to review an area to be drilled, may result in personal injury and/or injury to other as well as vehicle damage.

3. **Eye Protection:**

Always wear safety glasses or goggles during the installation process to avoid personal injury.

4. **Maximum Towing/Carrying Capacity:**

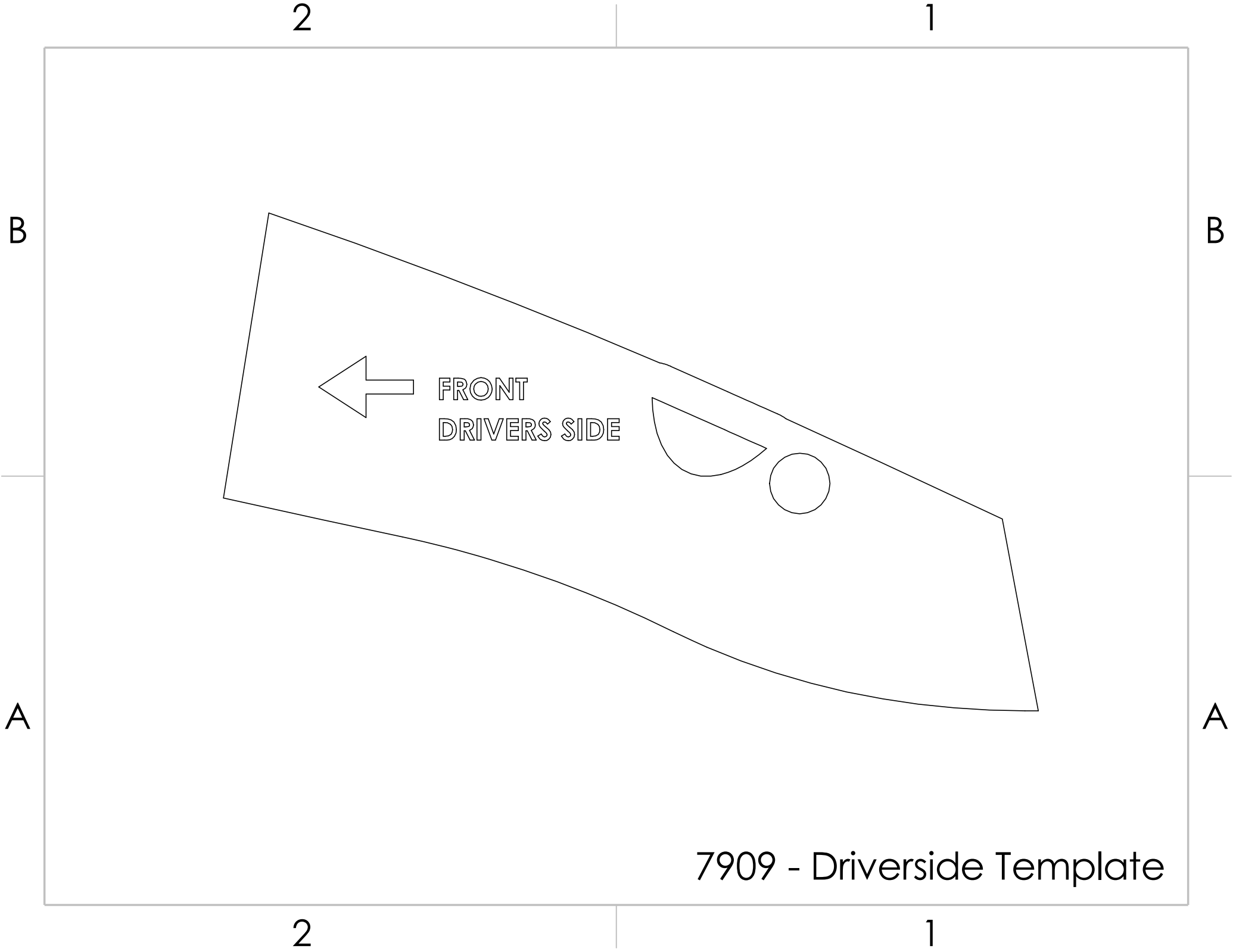
User should never exceed the vehicle manufacture's maximum tow and weight rating. Failure to follow these guidelines will void the Hellwig warranty and may result in personal injury and/or injury to others as well as vehicle damage.

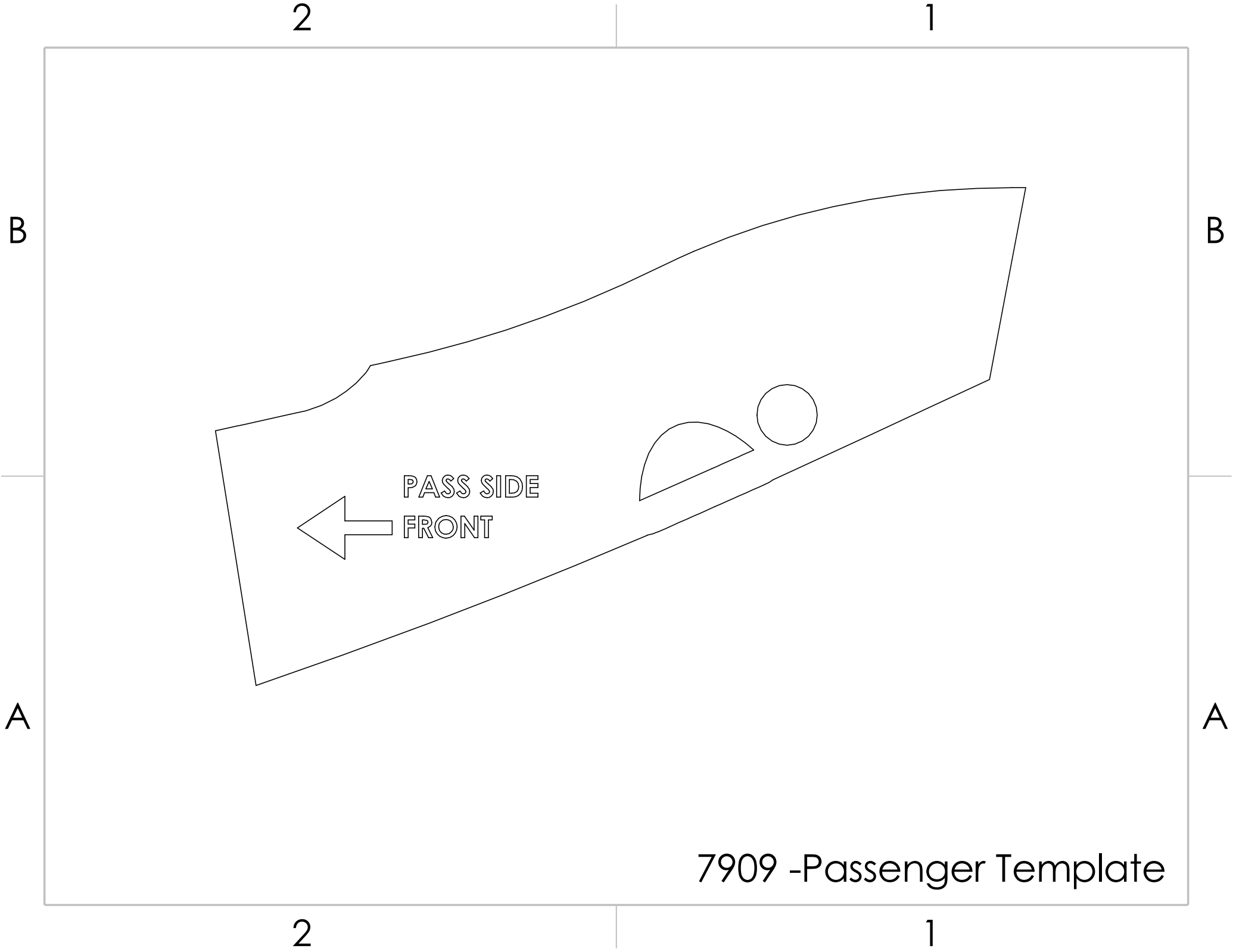
5. **For California Residents Only—Prop 65 Warning:**

Some products may contain chemicals such as DEHP, which can cause cancer, birth defects or other reproductive harm. For more info go to www.p65warning.ca.gov

6. **Checks after Install:**

After installing your new Hellwig sway bar it is recommended to bounce the vehicle, check for clearances, and if all looks good test drive the vehicle. Check the fasteners regularly thereafter. Ensure no damage is being done to the sway bar or your vehicle.





2

1

B

B

A

A

PASS SIDE
FRONT

7909 -Passenger Template

2

1