

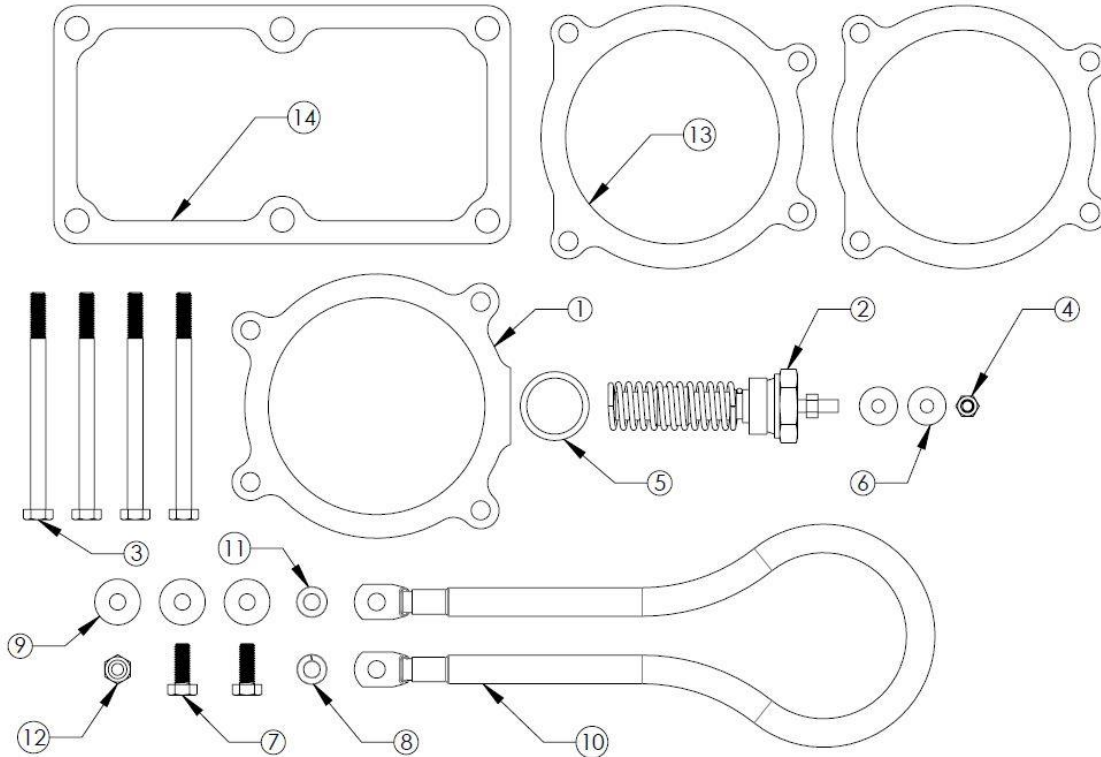



INSTALLATION INSTRUCTIONS

Intake Heater Relocation

46-10074

MAKE: Dodge/Ram
MODEL: 2500/3500
YEAR: 2007.5-2018
ENGINE: L6-6.7L(td)





EMISSIONS DISCLAIMER
 This product is not currently CARB exempt and is not available for purchase in California or for use on any vehicle registered with the California Department of Motor Vehicles.

Item	Description	Part Number	Quantity
1	Spacer, Heater Element	05-61682	1
2	Element, Heater Air Inlet	05-61683	1
3	Bolt: M6x1x85mm, Zn Gr 8.8	03-50900	4
4	Nut: M5X0.8, Gr 8.8	03-50901	1
5	Washer, Copper: M22x27x1.5mm	03-50902	1
6	Washer, Fender: M5	03-50316	2
7	Bolt: M6x1x16	03-50052	2
8	Washer, Lock: M6	03-50071	1
9	Washer, Flat: M6	03-50070	3
10	Ground Wire, 6Ga	05-61751	1
11	Washer, M6, 12mm OD	03-50177	1
12	Nut, Hex Nylon Lock: M6 x 1.0	03-50185	1
13	Gasket, Throttle Body	05-60209	2
14	Gasket, Manifold	05-60146	1

aFe POWER recommends professional installation on this product. Thoroughly inspect the aFe POWER exhaust system to make sure there is no damage from shipping (if damage is noted, immediately contact aFe POWER customer service). Allow time for your vehicle to cool down prior to installation. When working on your vehicle proceed with caution. Wear protective safety equipment; eye goggles and gloves to ensure a safe installation.



INSTALLATION INSTRUCTIONS

Intake Heater Relocation

MAKE: Dodge/Ram
MODEL: 2500/3500
YEAR: 2007.5-2018
ENGINE: L6-6.7L(td)

46-10074

1. **(Read instructions prior to installation.)**
2. Disconnect batteries before installation.
3. Remove engine cover.
4. Disconnect the plugs for the EGR.
5. Remove the wire harness from the side of the intake manifold.
6. Remove the sensor harness from the back of the intake manifold.
7. Remove the bolt securing the harness to the manifold.
8. Remove the bolt from the dipstick tube and remove dipstick tube bracket.
9. Loosen the EGR tube clamp on the passenger side and remove. Remove the gasket. Loosen the clamp on the passenger side. This will allow you to pull the tube away from the manifold. Save the gasket and the clamp. They will be reused.
10. Remove the four bolts from the EGR valve and remove the EGR Valve.
11. Loosen the clamp connecting the hump hose to the intake manifold. Disconnect the boost tube from the intake manifold.
12. Remove the five bolts from the intake manifold and remove the manifold slowly. There is a group of wires still connected to the Manifold. As you pull the manifold out of the engine bay, turn it over and unplug the wires from the intake butterfly gate.
13. Remove the four bolts on the butterfly gate from intake manifold.
14. Install the Heating Element into the Spacer block using the supplied copper washer.
15. Using the supplied 85mm long bolts, and gaskets, install the intake heater in-between the butterfly gate and the intake manifold.
16. Remove the grid heater power wire from the OE grid heater.
17. Clean and prep the gasket surfaces on the engine.
18. Install the provided gasket onto the intake manifold.
19. Plug the butterfly gate into the truck wire harness before installing the intake manifold.
20. Install the grid heater power line onto the heating element using the supplied M5 nut and washers.
21. Install the intake manifold onto the engine.
22. Plug in the MAP sensor.
23. Install the EGR Valve onto the intake manifold using the stock hardware and tighten.
24. Install the Gasket pulled out in Step 9 on the EGR tube. Slide the EGR tube back on the EGR valve and tighten both clamps.
25. Plug in the EGR Temperature Sensor. Lock the Tab on the plug.
26. Plug in the EGR Valve Connector.
27. Install the Dipstick Bracket.
28. Slide the hump hose over the butterfly gate, and tighten the clamp. (It may be necessary to loosen the clamp connecting the hump boost tube to the intercooler)
29. Install the engine cover. Use the four stocks bolts.
30. Install the oil dipstick.
31. Install the Ground strap onto the spacer using the supplied 6mm bolt, and washers.
32. Install the ground strap onto the battery.
33. Reconnect the batteries.
34. Your Installation is now complete. Please check all electrical connections and all hardware.