

# OPEN FIRST!!

## Installation Instructions

Set # 8.3147

## Rear Torsion Beam Bushings

2011 - 2015 Toyota Prius



1131 VIA CALLEJON, SAN CLEMENTE, CA 92673

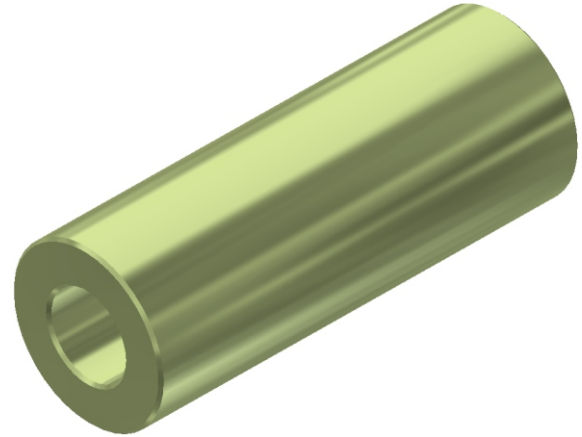
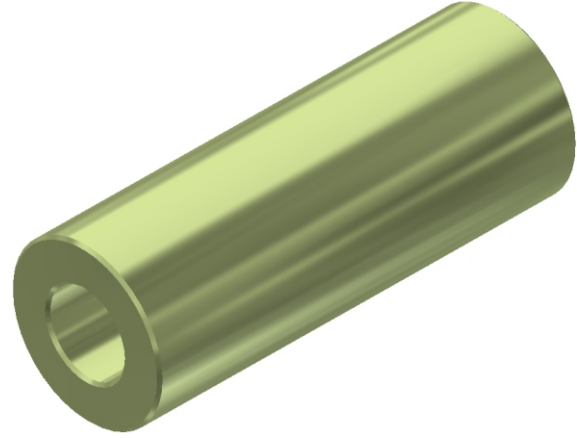
© 2023 Energy Suspension. All rights reserved.

May not be reproduced, in any form, or by any means, without the written consent of Energy Suspension.

It is recommended that if you are unfamiliar with this type of work that you refer to a qualified service center specializing in this type of work. It is also recommended that if you choose to do this work yourself that a factory service manual be obtained for the proper procedures pertaining to removal, replacement and proper torque specifications for your vehicle. This instruction set is intended as a guideline for the safe installation of Energy Suspension's polyurethane bushings, once you have removed the factory components from your vehicle. Wheel alignment is almost always disturbed when suspension components are removed or replaced. It is recommended that you have the alignment checked on your vehicle at a qualified alignment shop. Energy Suspension recommends that you read over all the installation instructions and check all P/N's and quantities in the parts list before you start. Call customer service at 949-361-3935 if the parts in your kit do not match this parts list. Prior to installation, make sure that your car is in excellent mechanical condition and that there are no suspension or steering related problems. This part has been designed to work only with a car that is in good state of repair. No matter how carefully we design our parts, this is one area we have no control over and cannot be held responsible.

### Parts List:

- 2 - 03P03727 Rear Torsion Beam Bushings
- 2 - 15P1081339 1.125" x .563" x 3.300" Sleeve



# OPEN FIRST!!

## Installation Instructions

Set # 8.3147

### Rear Torsion Beam Bushings

2011 - 2015 Toyota Prius



1131 VIA CALLEJON, SAN CLEMENTE, CA 92673

© 2023 Energy Suspension. All rights reserved.  
May not be reproduced, in any form, or by any means,  
without the written consent of Energy Suspension.

#### Removal

The Energy Suspension bushings for this application are designed to fit the eye of the Torsion Beam Housing. Removal of the OEM shell is required for proper fitment.

The preferred method of removing the old Torsion Beam bushings is to use a Pneumatic Air Chisel to drive the bushing and shell out. If the installer does not have an Air Chisel, the old bushings can be burned out, followed by cutting the OEM shell to remove it.

#### Preparation

Prior to installing your new Energy Suspension Bushings, inspect the eye that the bushing will be installed into. Remove any burrs or sharp edges and clean the eye of the part.

See images to the right for an example.



#### Installation

The preferred method of installing Energy Suspension bushings is to use an Arbor Press tool. See image to the right.

Other options include a Bench Vise or C-Clamp.

Prior to installing the bushings and after the parts have been cleaned and prepped, apply a light coat of silicone grease to the inside of the eye of the part receiving the new bushing(s). Apply a light coat of silicone grease to all surfaces of the new bushing(s) that will contact metal during installation. Use the Arbor Press or similar tool to push the new bushing(s) into the eye of the control arm.

Lightly coat the outside of the new metal sleeve with silicone grease as well as the center bore of the new bushing(s) and push the new sleeve into the new bushing(s).

Keep any extra grease that gets pushed out during the process for other bushings in the set.

