



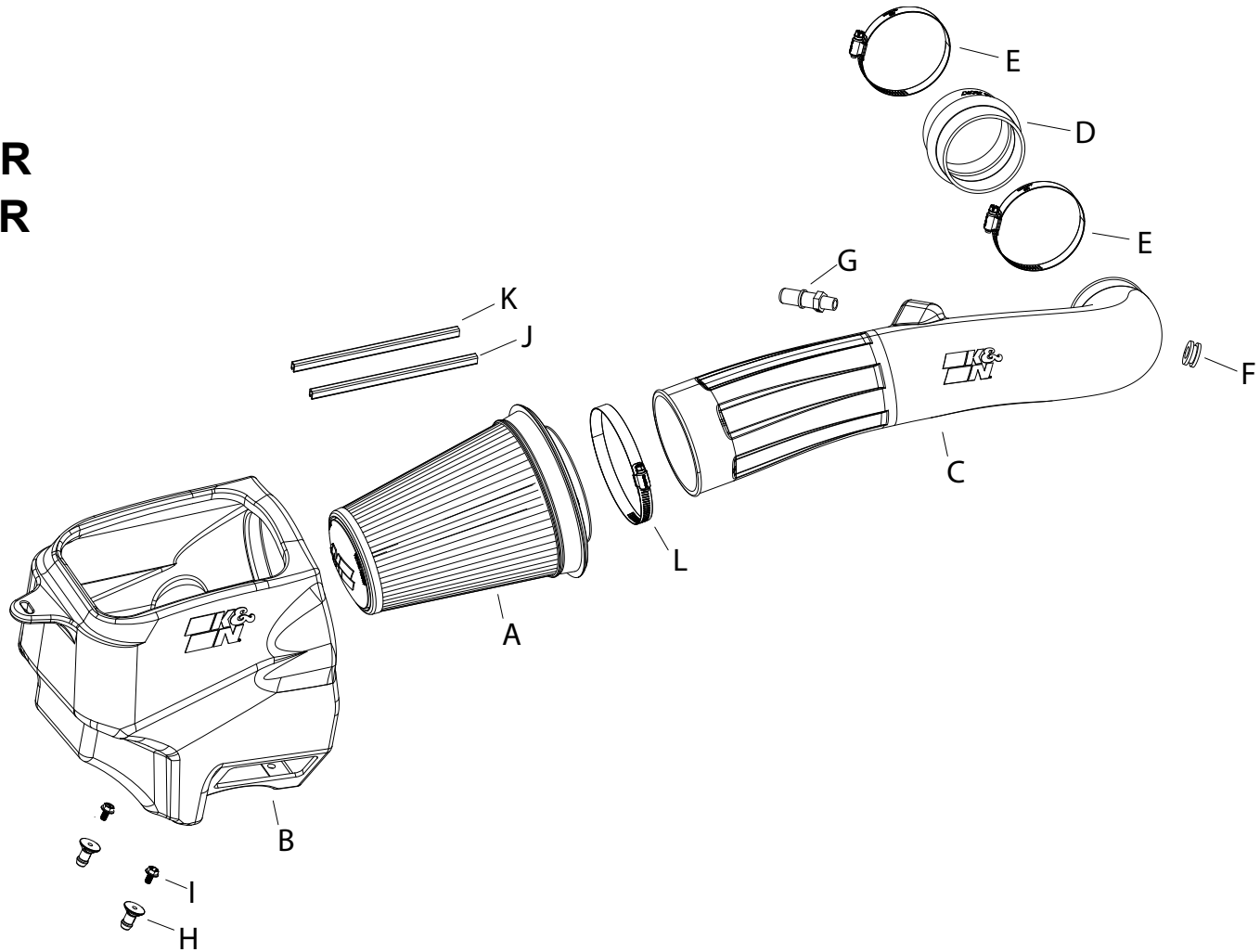
INSTALLATION INSTRUCTIONS

Not legal for sale or use in California on any pollution controlled motor vehicle.

50-1576 JEEP 2018-26 WRANGLER 2020-26 GLADIATOR V6 - 3.6L

TOOLS NEEDED:

Ratchet
Extension
5/16" Nut Driver
8mm Socket
10mm Socket
3/4" Wrench
T25 Torx bit
T30 Torx bit
Panel removal tool
Flathead screwdriver



PARTS LIST:

Description	Qty.	Part #	Description	Qty.	Part #	Description	Qty.	Part #
A AIR FILTER	1	RU-5321	E HOSE CLAMP; #52 BLACK	2	08610KA	I BOLT; M6-1 X 12, HEX	2	1-2110
B AIRBOX	1	087663	F GROMMET; 1/2"ID - 1"OD	1	KITGRMT03	J CLIP; SNAP ON RED	1	088220
C TUBE	1	087664	G VENT; 1/4 NPT - 5/8" OD	1	082628	K CLIP; SNAP ON ORANGE	1	088221
D HOSE;HUMP 3.25"ID X 2-5/8"	1	08171	H MOUNT	2	8-186-1	L HOSE CLAMP; #80 BLACK	1	08694KA

If you need any assistance please call 1-800-858-3333 to speak with a representative in our Customer Service Center before returning the product.

NOTE: FAILURE TO FOLLOW INSTALLATION INSTRUCTIONS AND NOT USING THE PROVIDED HARDWARE MAY DAMAGE THE INTAKE TUBE, THROTTLE BODY AND ENGINE.

TO START:

1. Turn off the ignition and disconnect the negative battery cable.
NOTE: Disconnecting the negative battery cable erases pre-programmed electronic memories. Write down all memory settings before disconnecting the negative battery cable. Some radios will require an anti-theft code to be entered after the battery is reconnected. The anti-theft code is typically supplied with your owner's manual. In the event your vehicles anti-theft code cannot be recovered, contact an authorized dealership to obtain your vehicles anti-theft code.

NOTE: K&N Engineering, Inc., recommends that customers do not discard factory air intake.



2. Disconnect the inlet air temp electrical connector. Pull harness away from intake tube.



3. Disconnect the crank case vent line.



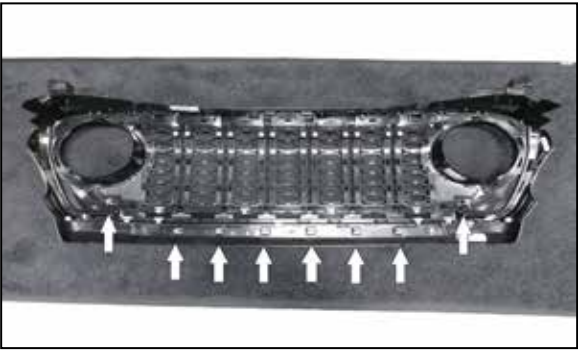
4. Remove the bolts that secure the factory tube to the fan shroud, then loosen hose clamp at throttle body.



5. Remove the bolt that secures the factory air box to the fender and remove assembly from the vehicle. **NOTE: K&N Engineering, Inc., recommends that customers do not discard factory air intake.**



6. Remove the 6 clips at the top of the grille that secure grille to core support.



7. Before removing grille note the location of the 8 clips that hold the lower part of the grille to the core support. Start at either side of the grille. Grasp the bottom part of the grille, pulling firmly straight back dislodging the clips one at a time. Work your way across the grille until all clips have been dislodged and remove the grille.



8. Remove the two bolts that secure the core support brace to the core support and remove brace. **NOTE: the brace will be reinstalled in a later step.**



9. Remove the two bolts that secure the inlet scoop to the core support and remove inlet scoop.



10. Reinstall the grille re-engaging the lower clips one at a time then reinstall the six clips that hold the grill to the top of the core support.



11. Install two airbox mounts onto the K&N® airbox with provided hardware. Secure and tighten.



12. Install 1/4 NPT quick connect fitting onto the tube. **NOTE: NPT fittings are easy to cross thread. Install the vent fitting "hand" tight, then turn it two complete turns with a wrench.**



13. Remove the inlet air temp sensor from the factory inlet tube. Then remove the "O" ring from the sensor. Install the provided grommet onto the K&N® intake tube. Then install the inlet air temp sensor into the grommet.



14. Attach the filter clips to the pleats on the air filter align and push down. Passenger side filters, place the orange clip on top and the red on bottom.



15. Install the air filter into the K&N filter housing.



16. Install the provided hump hose to the throttle body with clamps provided. Tighten clamp on throttle body only. Tighten clamps using 5/16" nut driver.



17. Install the K&N® filter housing, then engage the K&N® airbox mounts into the factory airbox mounting location. Secure using the bolt from step 5. Secure and tighten.



18. Install the intake tube and position to filter and throttle body. Secure and tighten remaining clamps. Tighten clamps using 5/16" nut driver. Reconnect the crank case vent line onto the quick connect fitting and reconnect the inlet temp sensor electrical connector onto the temp sensor.



19. Reconnect the vehicle's negative battery cable. Double check to make sure everything is tight and properly positioned before starting the vehicle.

20. It will be necessary for all K&N® high flow intake systems to be checked periodically for realignment, clearance and tightening of all connections. Failure to follow the above instructions or proper maintenance may void warranty.

ROAD TESTING:

1. Start the engine with the transmission in neutral or park, and the parking brake engaged. Listen for air leaks or odd noises. For air leaks secure hoses and connections. For odd noises, find cause and repair before proceeding. This kit will function identically to the factory system except for being louder and much more responsive.
2. Test drive the vehicle. Listen for odd noises or rattles and fix as necessary.
3. If road test is fine, you can now enjoy the added power and performance from your kit.
4. K&N Engineering, Inc., requires cleaning the intake system's air filter element every 100,000 miles. When used in dusty or off-road environments, our filters will require cleaning more often. We recommend that you visually inspect your filter once every 25,000 miles to determine if the screen is still visible. When the screen is no longer visible some place on the filter element, it is time to clean it. To clean and re-oil, purchase our filter Recharger® service kit, part number 99-5050 or 99-5000 and follow the easy instructions.