

FRONT SPEC SERIES BUMPER

20-23 CHEVY SILVERADO 2500/3500
FBCS2-03



TOOLS REQUIRED

- + T15 Torx
- + #4, #5, #8 Allen tool/socket
- + 10mm, 18mm, 19mm, 22mm wrenches
- + 12" Socket Extension
- + Trim Tool
- + Safety Glasses
- + 7mm, 10mm, 13mm, 15mm, 18mm, 19mm, 21mm sockets
- + Flush Cutters
- + Cutting tool (box knife, etc)

SKILL LEVEL

- + Novice/Intermediate
 - + 1 (you) to 2 persons
- Little skill level required, you can easily install it by yourself however, additional help will be useful to prevent injury or damage.

TIME REQUIRED

- + Approximately 4.5 Hours

WARNINGS/CAUTIONS BEFORE STARTING INSTALLATION

Before you install this kit – Read and understand all instructions, warnings, cautions, and notes contained in this installation instruction guide. Consult your vehicle owner's manual for proper disconnection of electrical and lifting of vehicle if required for installation of this product.

This install may require some technical skills and knowledge of basic mechanical work. If you do not feel that you are capable of performing this install please take this product to a trained professional.

After reading this guide please contact us with any questions or concerns before installing product.
Customer Service: 855-680-9595

DV8 Offroad is not responsible for any bodily injury or harm to you or your vehicle as a result of an improper install.

Proper installation of this kit required knowledge of the factory recommended procedures for removal and installation of original equipment components. We recommend that the factory shop manual and any special tools needed to service your vehicle be on hand during the installation. Installation of this kit without proper knowledge of the factory recommended procedures may affect the performance of these components and the safety of the vehicle

- *Always wear eye protection when operating power tools*

Inspect all contents of this package to make sure product is not damaged and all installation hardware has been included. If parts are missing from kit, please be prepared to provide the following information

1. Name of purchase location
2. Bar Code on side of box
3. Date above bar code
4. Date inside box cover

HARDWARE INCLUDED

Begin by unpacking all items and inspecting for missing pieces or damage. If you have any concerns, please contact the company the product was purchased from. Extra hardware may be included with the product.



(4) M6x20mm Allen Head Bolts



(8) M6x20mm Hex Bolts



(4) M6 Nylock Nuts



(16) M6 Flat Washers



(14) M12 Nylock Nuts



(4) M12 Fender Washers



(32) M12 Flat Washers



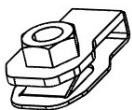
(8) M12x30mm Allen Head Bolts



(10) M12x35mm Hex Bolts



(4) M12x140x35mm Hex Bolts



(8) M12 Nutclips



(2) M6x20mm Allen Head Bolts



(4) M6 Nylock Nuts



(12) M6 Flat Washers



(2) M6x80 Hex Bolts (Full Thread)

HARDWARE CONT.



(4) M6 Nuts



(2) ABS Spacers

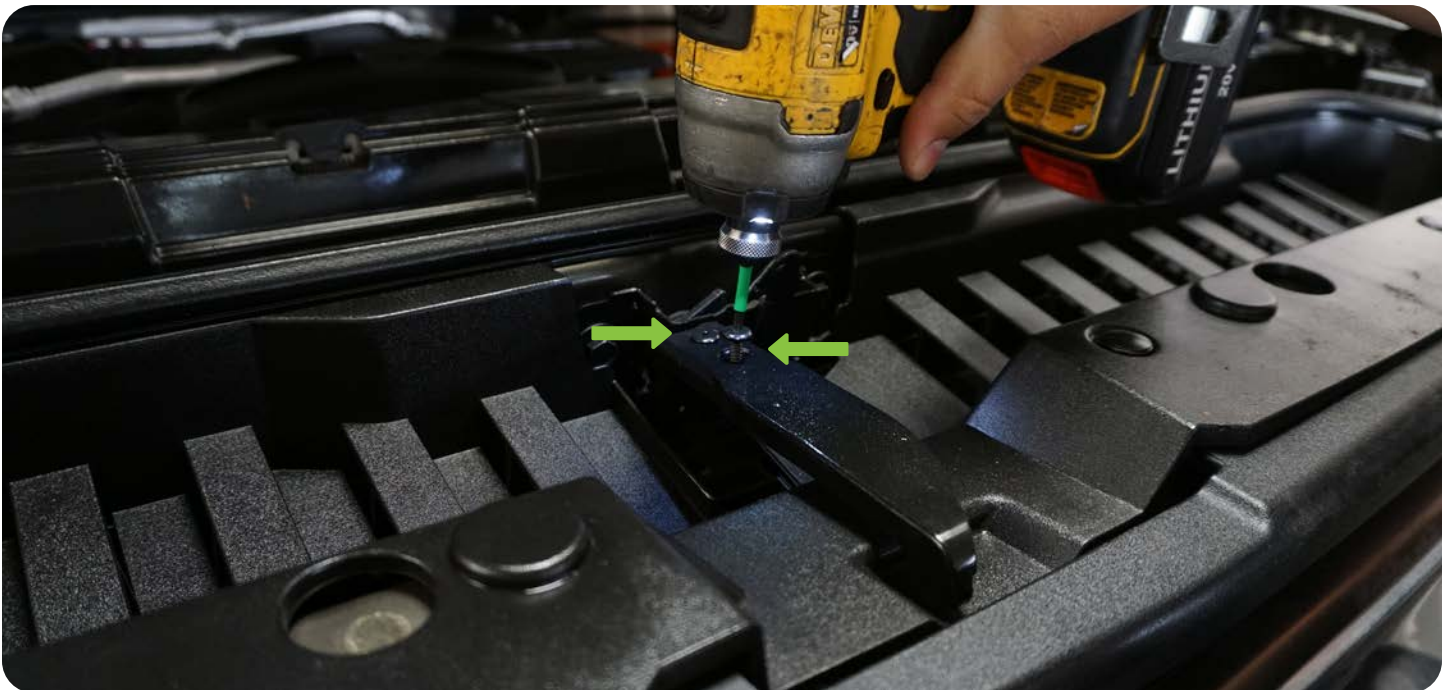
PARTS INCLUDED

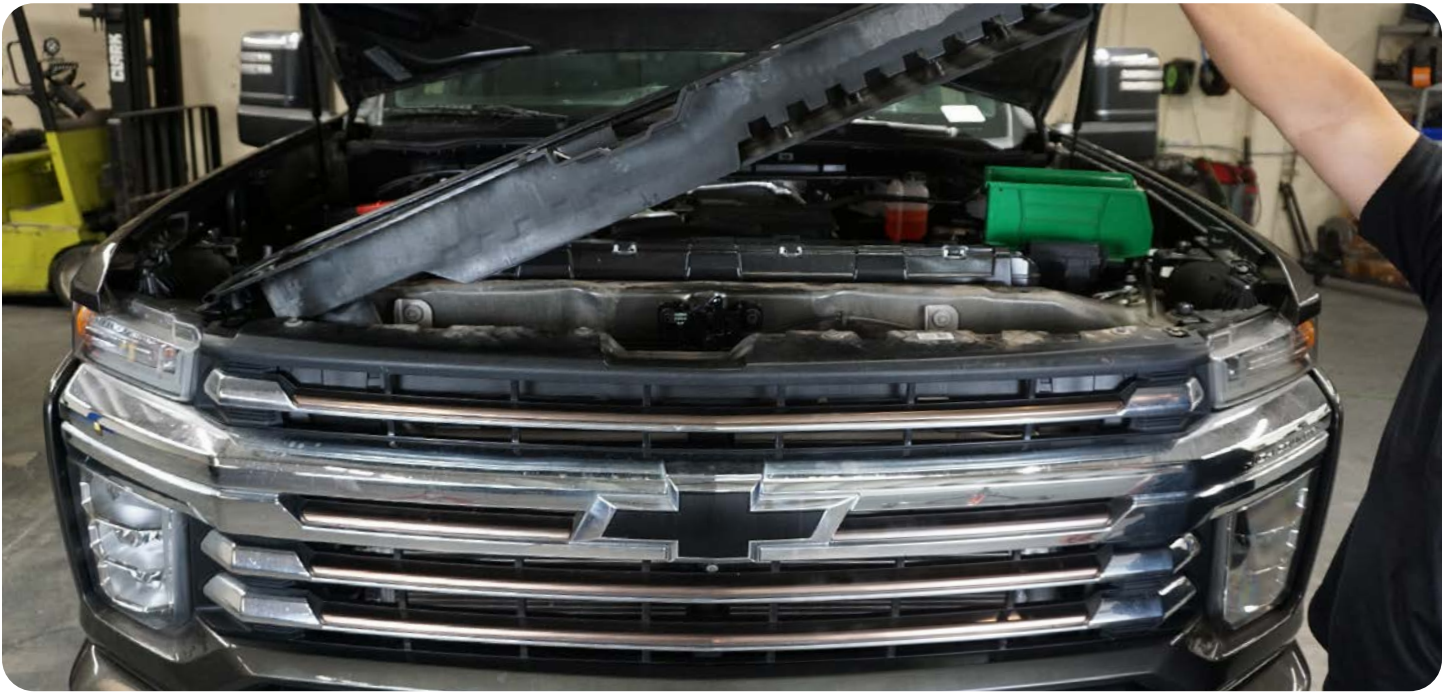


STEP 1 | USE A TRIM TOOL TO REMOVE THE (9) CLIPS HOLDING THE RADIATOR TOP COVER.



STEP 2 | USING A #4 ALLEN TOOL, REMOVE THE HOOD LATCH HANDLE BEFORE REMOVING THE RADIATOR TOP COVER.





STEP 3 | USING A 10MM SOCKET, REMOVE THE (4) TOP BOLTS HOLDING TO THE GRILLE.



STEP 4 | REMOVE THE (2) TORX BOLT ON THE INNER WHEEL WELL WITH A T15 TORX BIT.



STEP 5 | CAREFULLY PULL BACK ON THE FENDER TO UNCLIP IT FROM THE BODY, EXPOSING A 7MM BOLT. REPEAT PROCESS TO OTHER SIDE.

ENSURE TO TAKE YOUR TIME AND PULL STRAIGHT BACK TO AVOID BREAKING ANY CLIPS.



STEP 6 | REMOVE THE BOLT USING 7MM SOCKET. REPEAT PROCESS ON OTHER SIDE.



STEP 7 | ONCE THE BOLTS ARE REMOVED, CAREFULLY PULL THE BODY PANEL AND REMOVE PANEL. ENSURE TO TAKE YOUR TIME AND PULL STRAIGHT BACK TO AVOID BREAKING ANY CLIPS.

NOTE: SOME WILL COME AS A ONE PIECE PANEL. WE RECOMMEND HAVING A SECOND PAIR OF HANDS TO HOLD ONE END TO AVOID DAMAGE TO THE PANEL.



STEP 8 | REMOVE THE (2) NUTS ON THE GRILLE/FASCIA USING A 10MM SOCKET.



STEP 9 | ONCE THE PANEL(S) AND BOLTS ARE REMOVED, PULL BACK THE FRONT GRILLE/FASCIA. DO NOT REMOVE COMPLETELY DUE TO WIRING.



STEP 10 | DISCONNECT CAMERA HARNESS.





STEP 11 | REMOVE GRILLE/FASCIA AND SET ASIDE.



STEP 12 | IF EQUIPPED, REMOVE THE PLASTIC ON TOP OF THE BUMPER TO REACH THE BUMPER BOLTS.



STEP 13 | USING A 18MM SOCKET AND EXTENSION, REMOVE THE (4) BOLTS ON THE BUMPER.



STEP 14 | UNDERNEATH THE VEHICLE, USE A 15MM SOCKET TO REMOVE THE (4) TOTAL BOLTS ON THE BUMPER BRACKETS ON BOTH SIDES.



STEP 15 | BEFORE PULLING THE BUMPER OFF, UNPLUG HARNESS ON THE PASSENGER SIDE. UNPLUG THE BLOCK HEATER HARNESS ON THE DRIVER SIDE.





STEP 16 | REMOVE BUMPER AND SET OFF TO THE SIDE.



STEP 17 | USING A 15MM SOCKET, REMOVE THE (4) BOLTS ON EACH SIDE TO REMOVE BUMPER BRACKET.



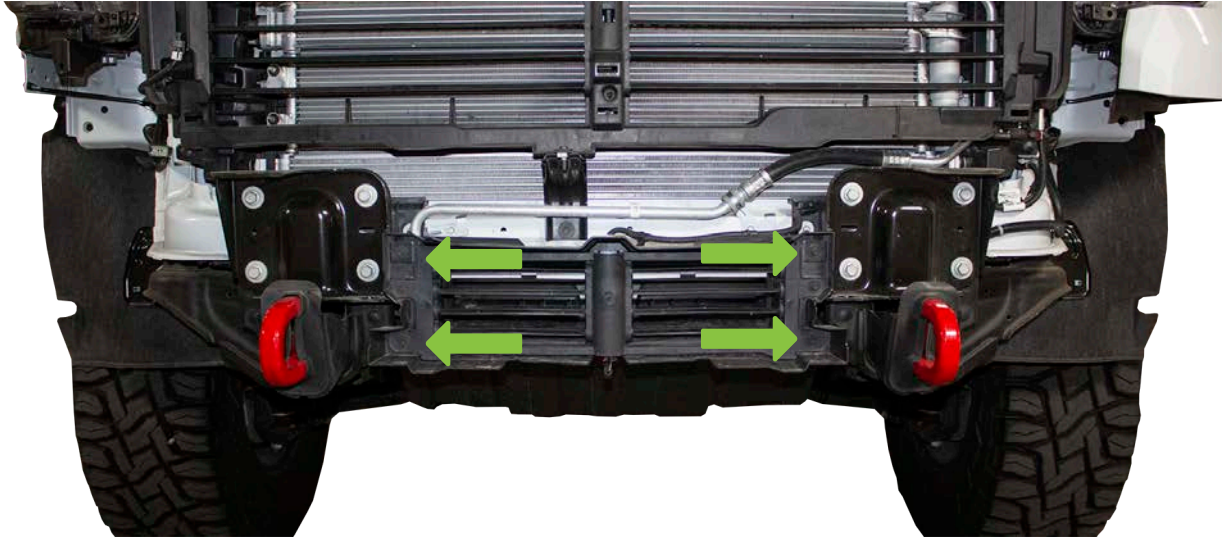


STEP 18 | USING 15MM SOCKET AND WRENCH, REMOVE THE BOLTS HOLDING ON TOW HOOKS.

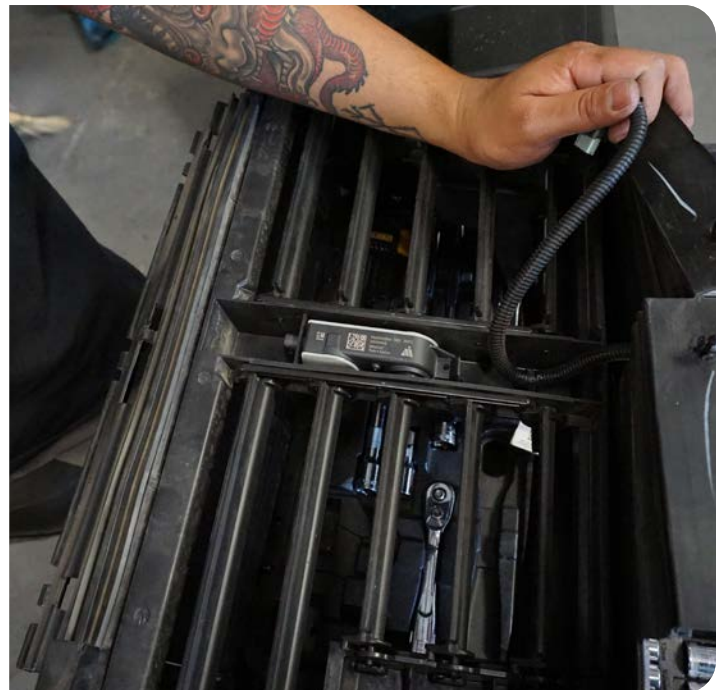


STEP 19 | IF EQUIPPED, REMOVE THE LOWER RADIATOR SHUTTER ASSEMBLY.

REMOVE THE (4) BOLTS ON THE SHROUD USING A 10MM SOCKET TO REMOVE ASSEMBLY FROM THE BUMPER BRACKET.



STEP 20 | ONCE THE SHUTTER ASSEMBLY IS REMOVED, LOCATE THE SHUTTER MOTOR PLUG AND CAREFULLY REMOVE IT FROM THE SHUTTER MOTOR.

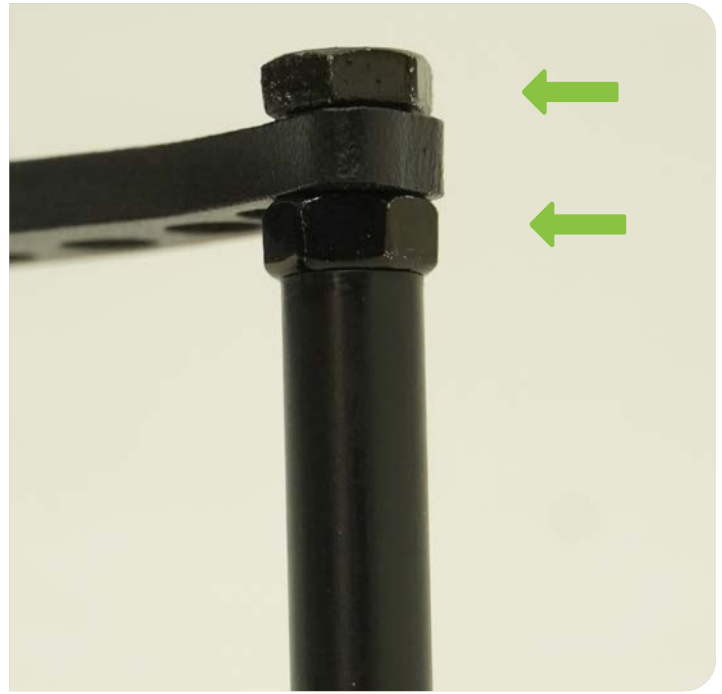
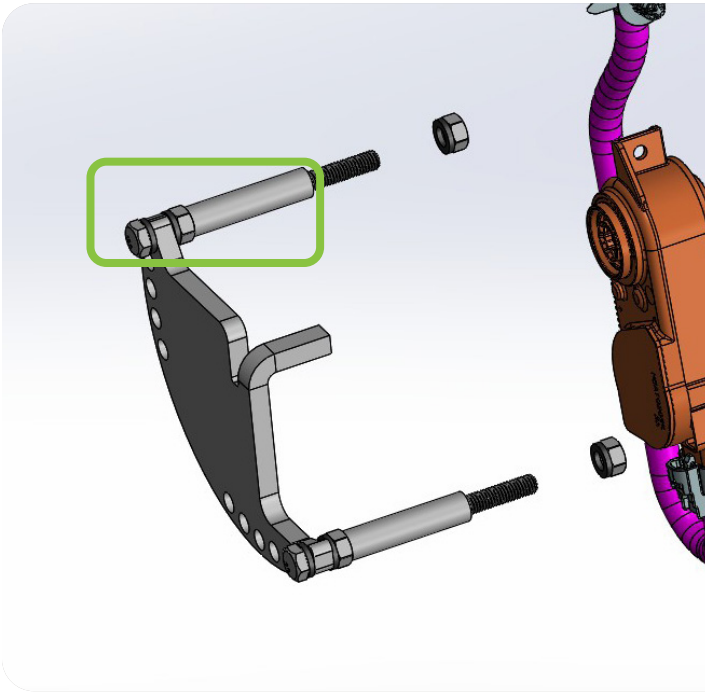


STEP 21 | REMOVE THE 2 MIDDLE FINS FROM THE SHUTTER MOTOR.

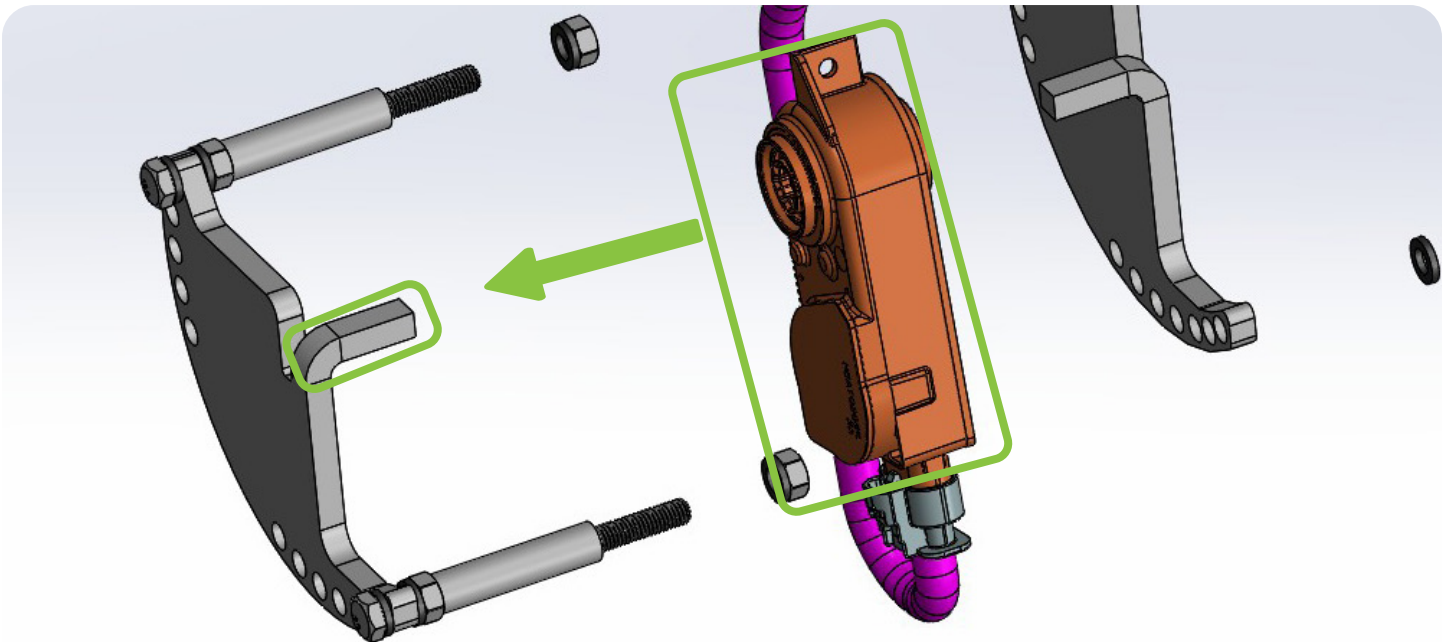
NOTE: BE CAREFUL NOT TO BREAK THE SHUTTER MOTOR. YOU WILL NOT BE USING THE SHUTTER ASSEMBLY AFTER THIS STEP.



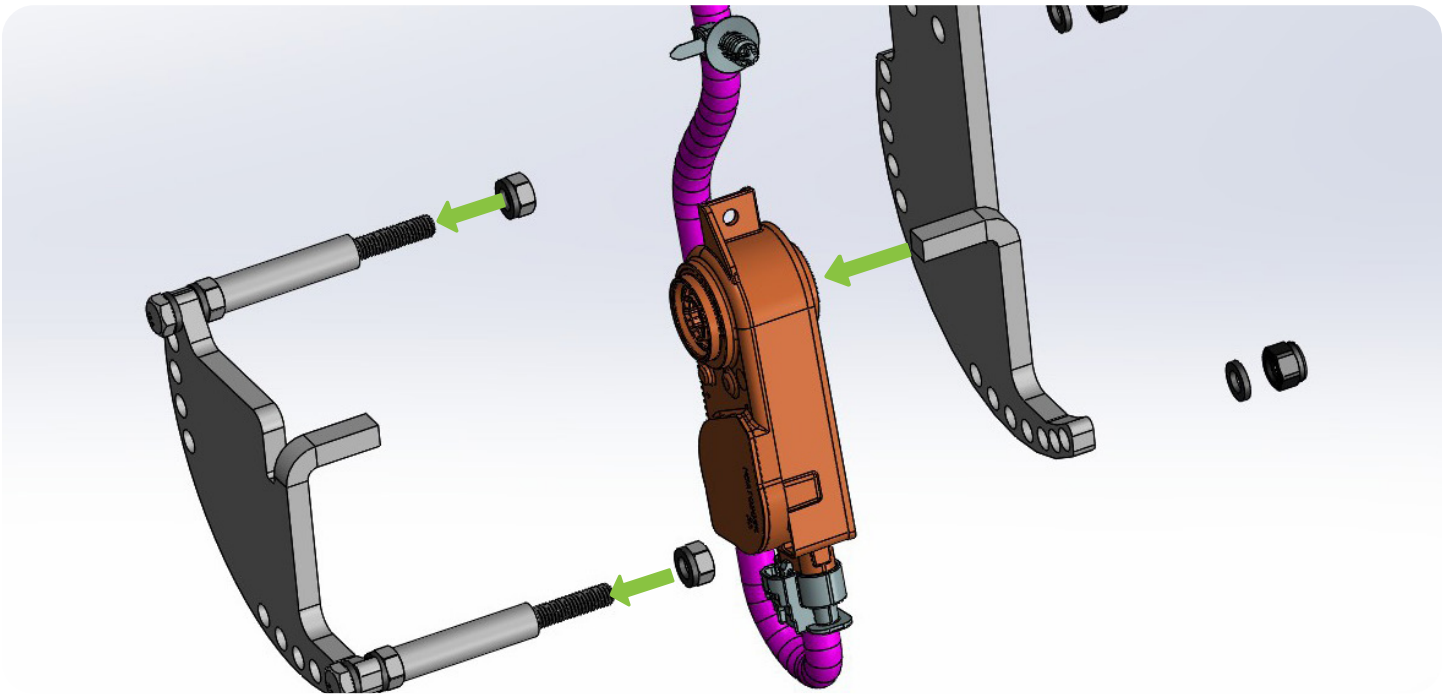
STEP 22 | ASSEMBLE THE SHUTTER MOTOR BRACKET. ON ONE SIDE OF THE BRACKET INSERT THE (2) M6X80 BOLT THROUGH, USE THE (2) M6 NON-NYLON NUT TO THREAD THROUGH THE BOLT. INSERT THE ABS SPACER TUBING INTO THE BOLT.



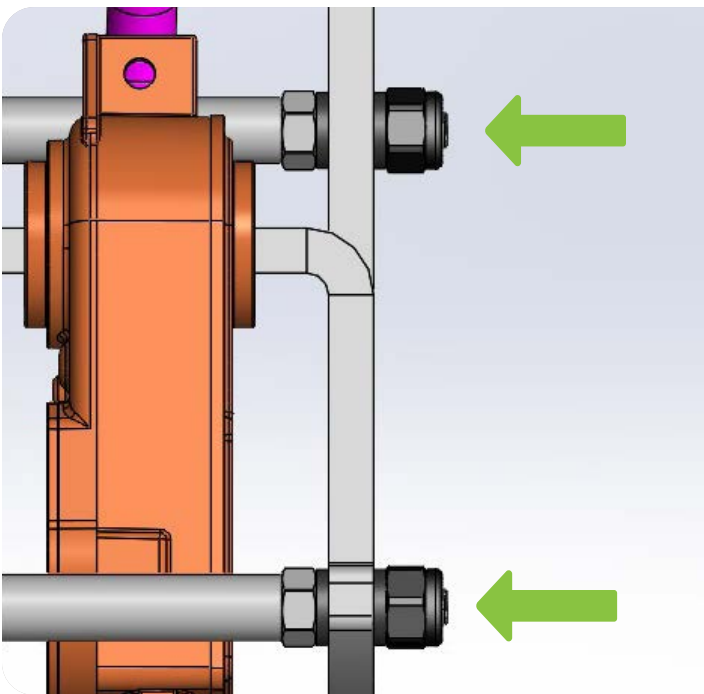
STEP 23 | PLACE THE SHUTTER MOTOR ON THE BRACKET.



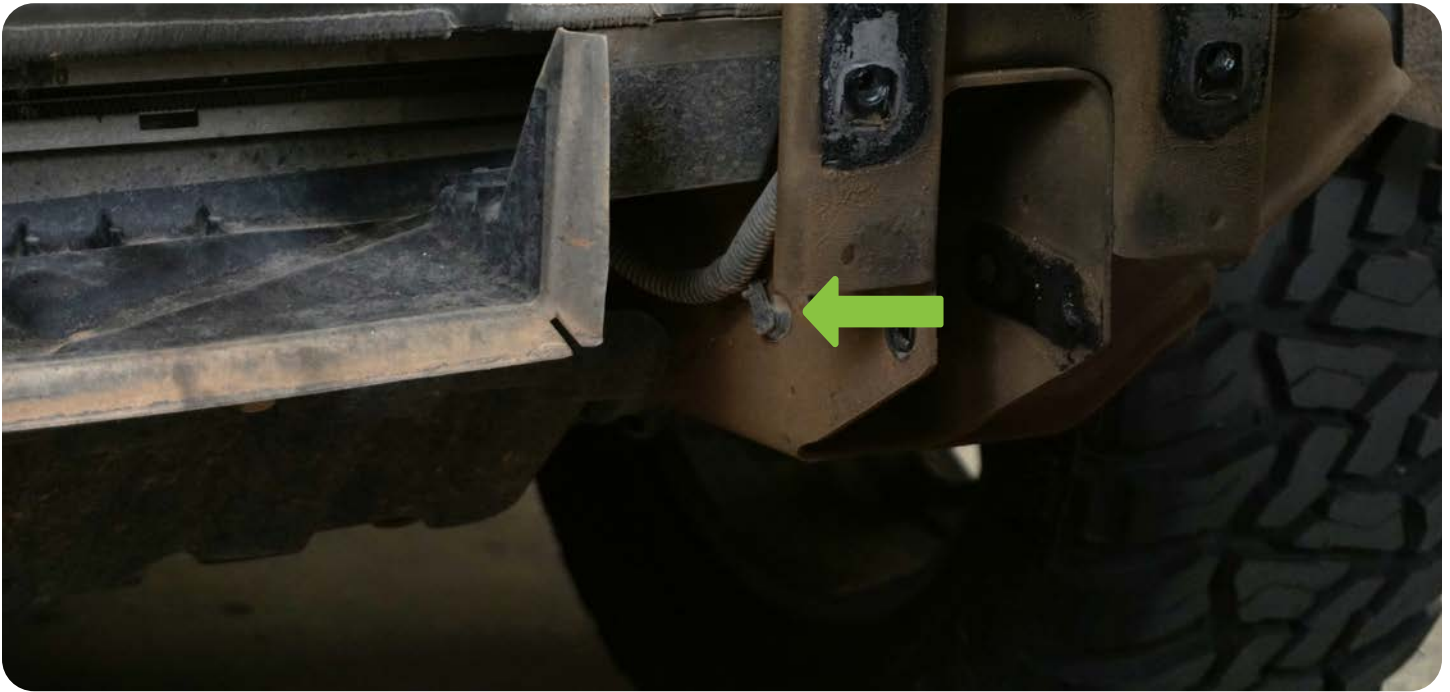
STEP 24 | PLACE (2) M6 NUTS ON BOLT TO SECURE THE ABS SPACER TUBING IN PLACE. PLACE THE OTHER PART OF THE BRACKET TO SECURE SHUTTER MOTOR IN PLACE.



STEP 25 | SECURE BRACKET BY USING THE (2) M6 NYLOCK NUTS USING 10MM SOCKET/WRENCH. SHUTTER MOTOR ASSEMBLY COMPLETED.



STEP 26 | REMOVE WIRE HARNESS CLIPS ON THE FRAME FOR WINCH ASSEMBLY CLEARANCE.



STEP 27 | INSTALL OUR WINCH MOUNT TO THE VEHICLE.

NOTE: SECOND PAIR OF HANDS WILL BE RECOMMENDED TO AVOID DAMAGE TO THE VEHICLE AND PERSONAL INJURY.



STEP 28 | USING A 15MM SOCKET, USE THE (8) OE BOLTS TO INSTALL THE WINCH MOUNT/BUMPER BRACKET TO THE FRAME.



STEP 29 | INSTALL THE (2) M12 NUTCLIPS ON BOTH SIDES OF THE BUMPER BRACKET.



STEP 30 | INSTALL THE 3RD M12 NUTCLIP TO THE BUMPER FRAME MOUNT AS SHOWN.



STEP 31 | ASSEMBLING YOUR BUMPER. INSTALL THE PROVIDED FOAM TO THE SIDES OF THE BUMPER WHERE THE WINGS WILL BE ATTACHED



STEP 32 | USING A 18MM WRENCH AND 19MM WRENCH/SOCKET, LOOSELY INSTALL (3) M12X35 BOLTS, WASHERS, AND NUTS.



STEP 33 | ALIGN THE WING TO THE FACE/FRONT OF THE BUMPER, AND SECURE THE BOLTS.

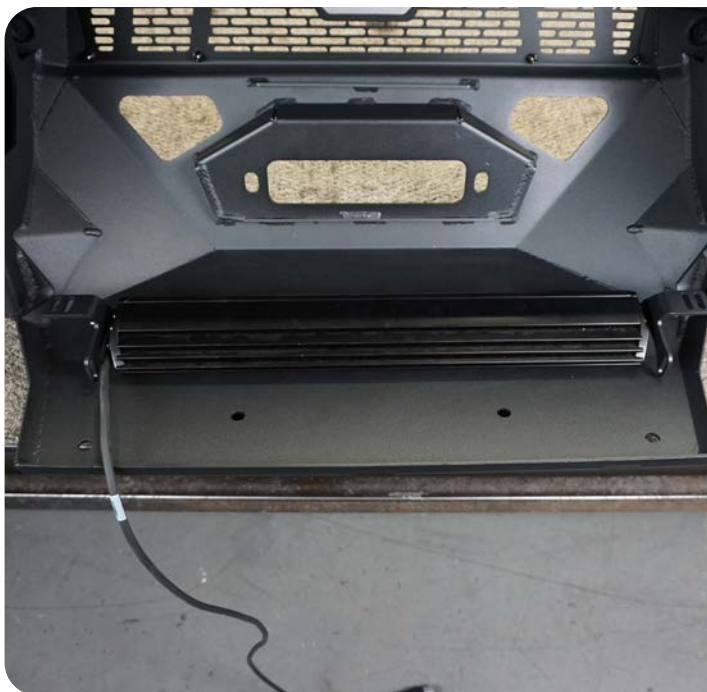


STEP 34 | EACH WING CAN ACCEPT (2) 3" POD LIGHTS. USING THE HARDWARE PROVIDED WITH THE LIGHTS, INSTALL THEM NOW.





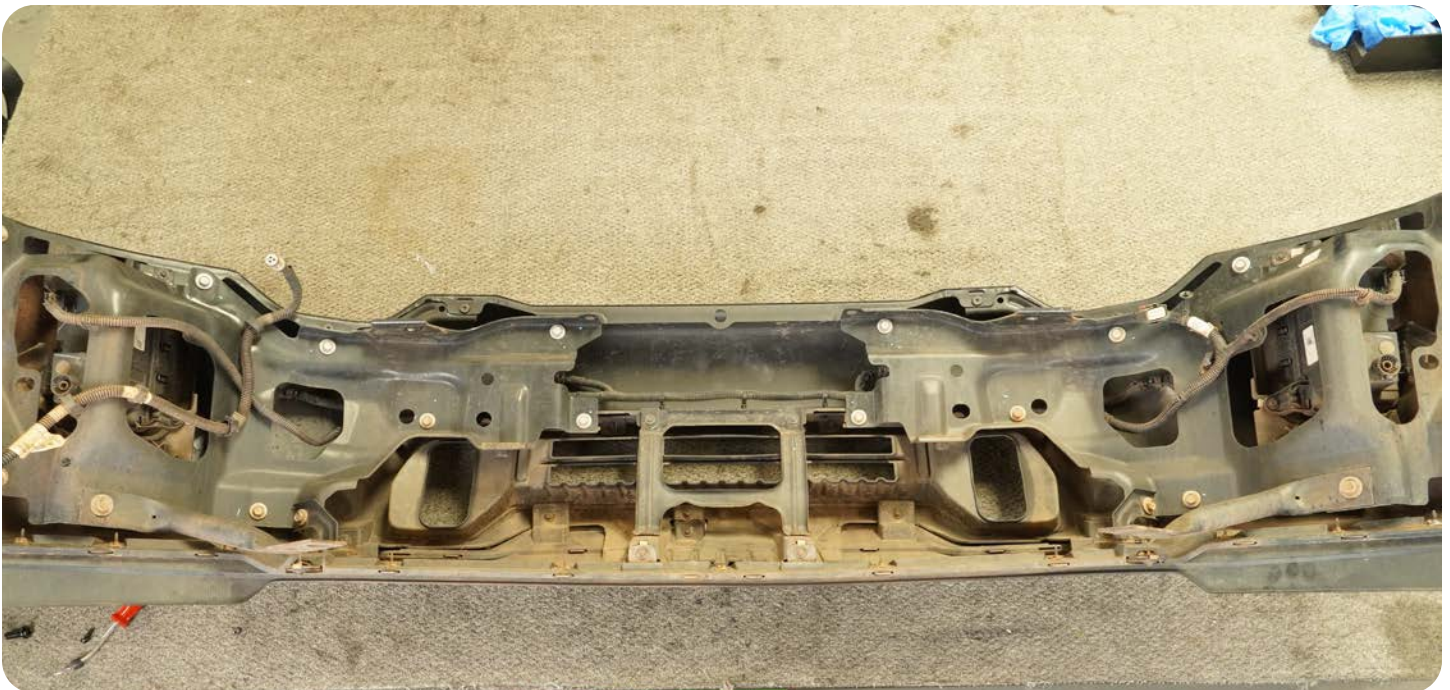
STEP 35 | THE CENTER LIGHT CAN ACCEPT (1) 20" LIGHT BAR. USING THE HARDWARE PROVIDED WITH THE LIGHT, MOUNT THE BRACKETS TOO THE LIGHT AS SHOWN.



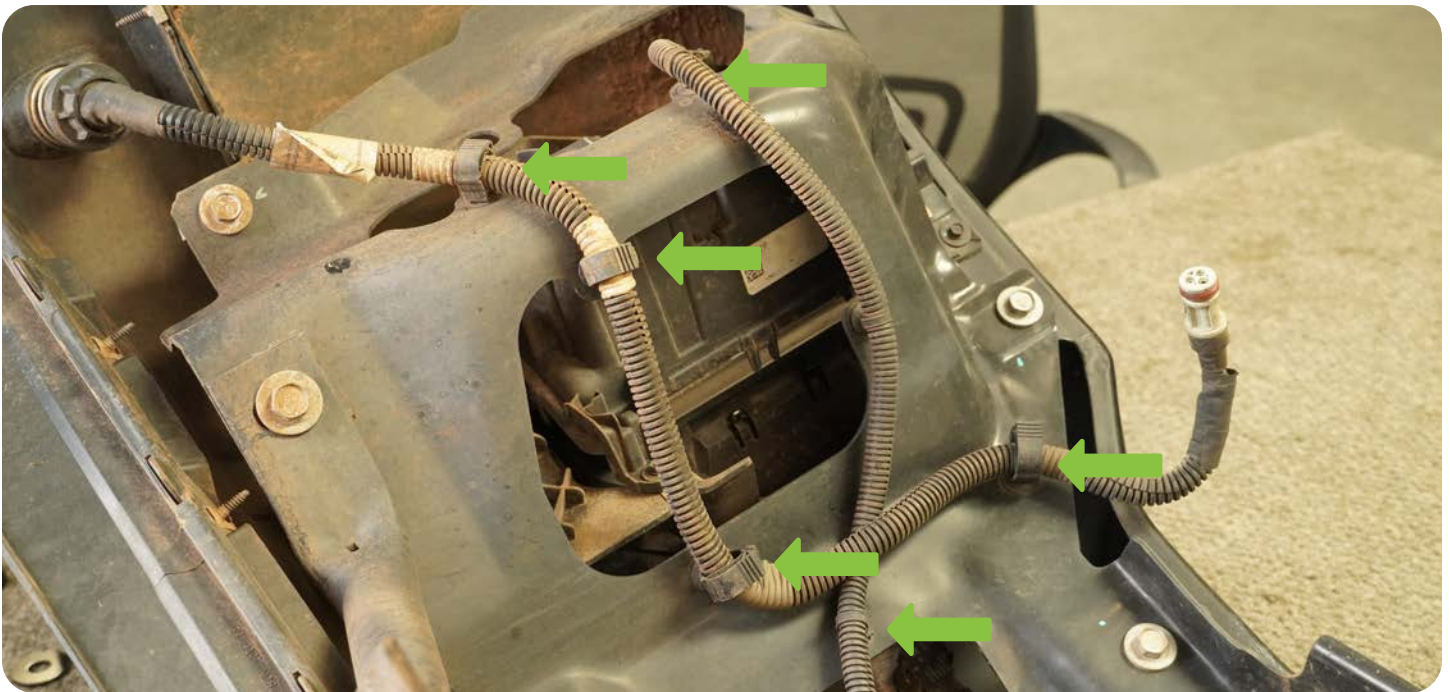
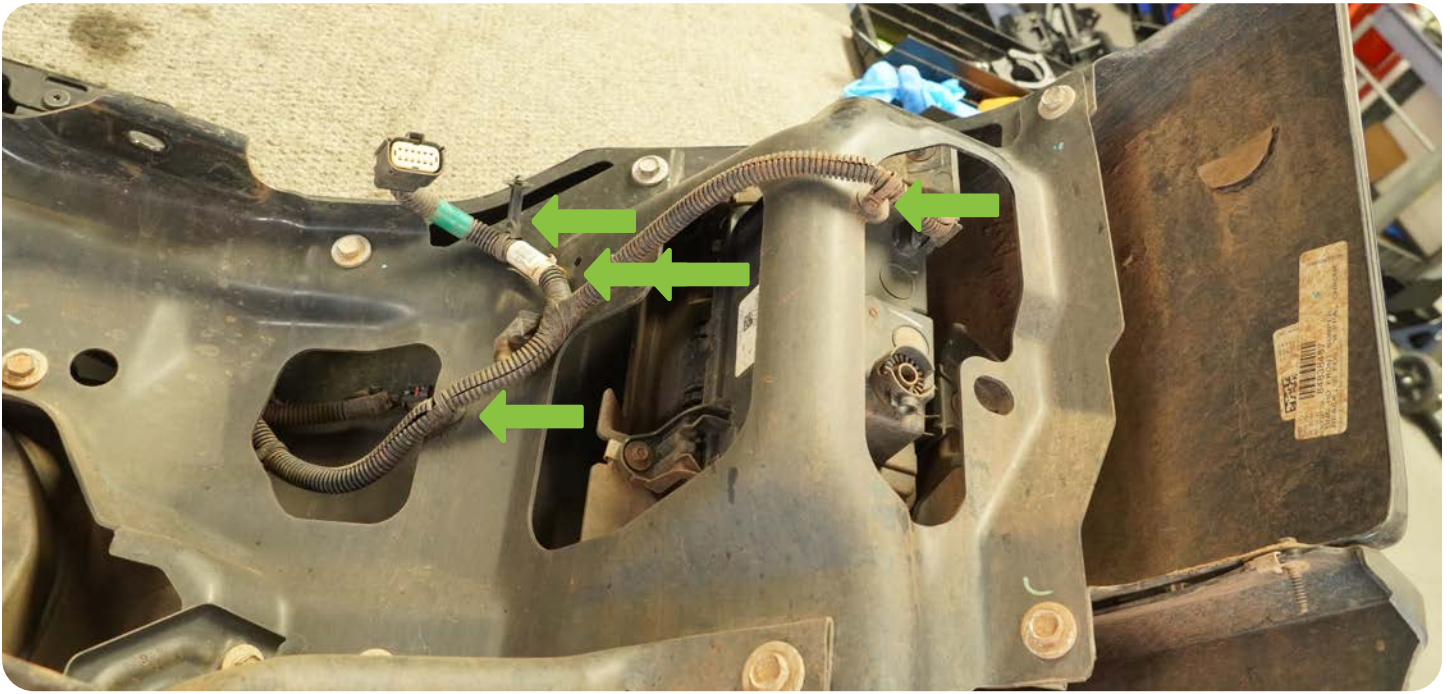
STEP 36 | USING A #4 ALLEN WRENCH AND 10MM WRENCH, INSTALL THE (4) M6X20 BOLTS, WASHERS, AND NUTS TO THE LIGHT BAR BRACKET.



STEP 37 | PLACE FACTORY BUMPER ON A TABLE OR A PLACE IT WILL NOT GET DAMAGED AND START REMOVING THE HARNESS.



STEP 38 | REMOVE ALL THE HARNESS CLIPS OFF THE BUMPER.



STEP 39 | DISCONNECT THE PIGTAIL OFF THE FOG LIGHTS.

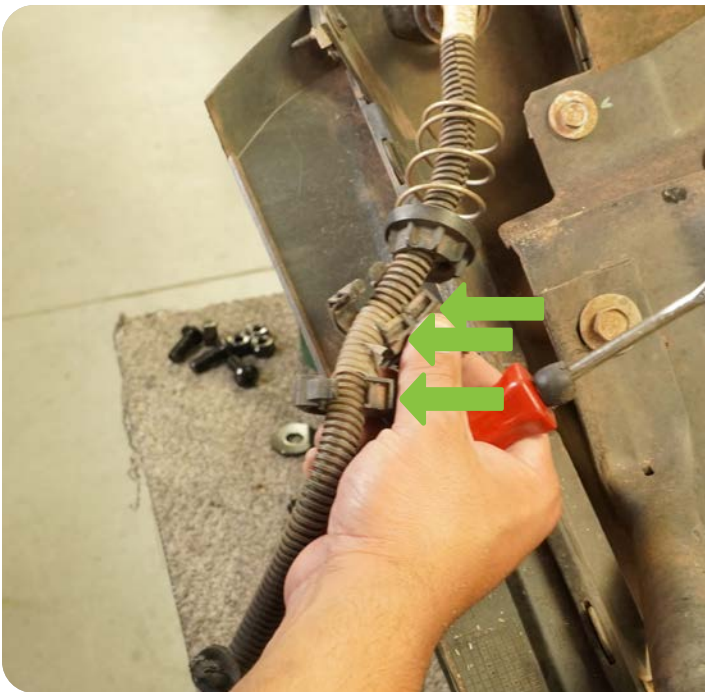


STEP 40 | IF EQUIPPED, REMOVE THE PARKING SENSORS FROM THEIR BEZELS.

NOTE: WHEN REMOVING THE SENSOR, REMEMBER OR MARK THE ORIENTATIONS OF THE SENSORS TO THE NOT HAVE ANY ISSUES WHEN REINSTALLING THEM TO THE NEW BUMPER.



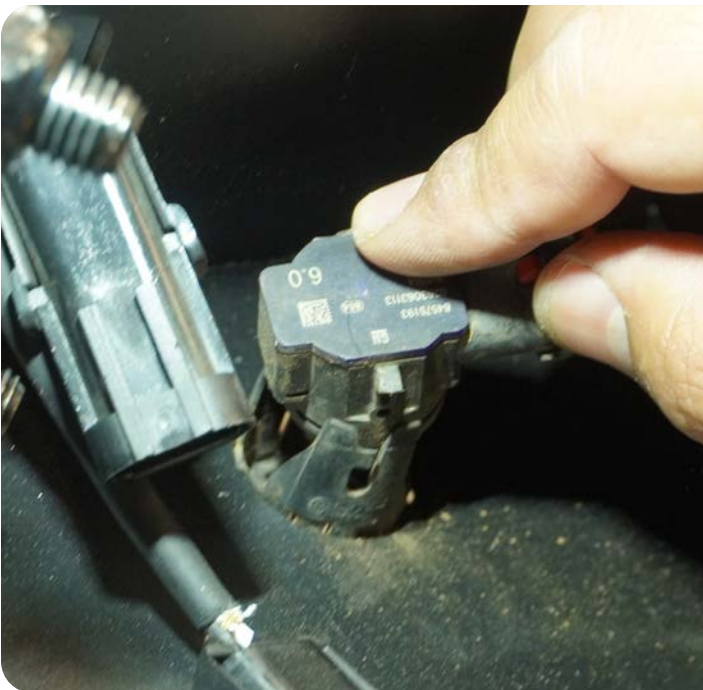
STEP 41 | REMOVE THE BLOCK HEATER HARNESS. TWIST AND TURN COUNTER CLOCKWISE. REMOVE THE CLIPS ON THE HARNESS TO REMOVE THE SPRING AND SPRING HOLDER TO REMOVE THE HARNESS THROUGH THE BUMPER.



STEP 42 | ONCE HARNESS IS FULLY REMOVED FROM THE BUMPER, ROUTE HARNESS THROUGH ASSEMBLED BUMPER ROUGHLY ALIGNING SENSORS (IF EQUIPPED) WITH THEIR RESPECTIVE HOLES.



STEP 43 | INSTALL THE PARKING SENSOR AND THE BEZEL AT THE SAME TIME. WHILE THE BEZEL STILL OUT AND THE SENSOR ON THE BEZEL, SQUEEZE THEM TOGETHER AND FLUSH TO THE BUMPER. THERE WILL BE A CLICK OR IT WILL SIT CORRECTLY ON THE BUMPER.



STEP 44 | ENSURE THE SENSOR IS PROPERLY SEATED AND THE SENSOR RING IS NOT PINCHED.

NOTE: IT IS VITAL THAT THE SENSOR ARE PROPERLY INSTALLED TO ENSURE PROPER FUNCTION. ONCE THE BUMPER IS MOUNTED ACCESS TO THE SENSORS IS LIMITED.



STEP 45 | IF INSTALLING A WINCH, INSTALL THE FAIRLEAD AT THIS MOMENT.

NOTE: WE ARE USING ONE OF OUR DV8 FAIRLEAD (WBPF-01 OR WBPF-02)



STEP 46 | IF INSTALLING A WINCH, INSTALL WINCH ON THE BUMPER BRACKET.



STEP 47 | USE THE PROVIDED HARDWARE THAT COMES WITH THE WINCH TO SECURE YOUR WINCH TO THE MOUNTING PLATE.



STEP 48 | PLACE THE GRILLE/FASCIA BACK ON THE VEHICLE AND RECONNECT THE CABLE, IF EQUIPPED.



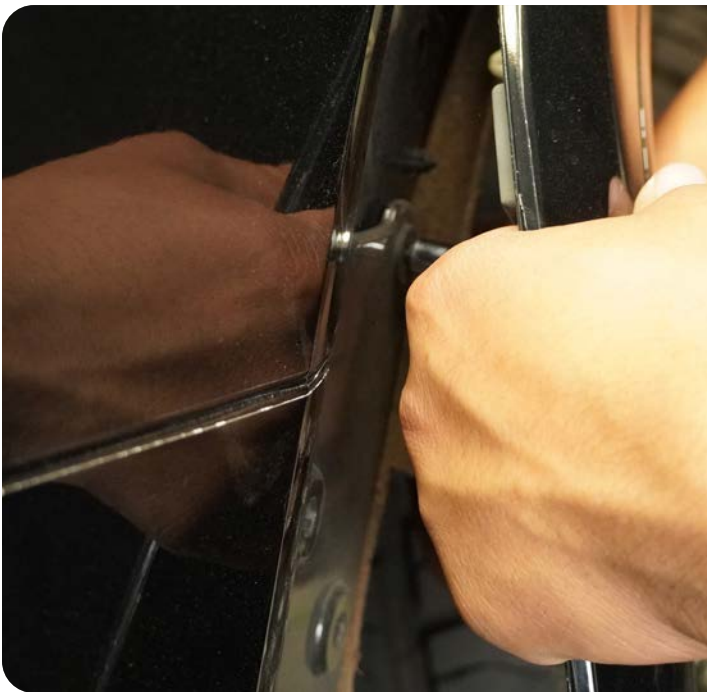
STEP 49 | REINSTALL THE GRILLE TO THE VEHICLE.



STEP 50 | REINSTALL THE BOTTOM PANEL.



STEP 51 | INSTALL THE 7MM BOLT TO SECURE BODY PANEL ON BOTH SIDES. INSTALL THE FENDER BACK INTO ITS PLACE.

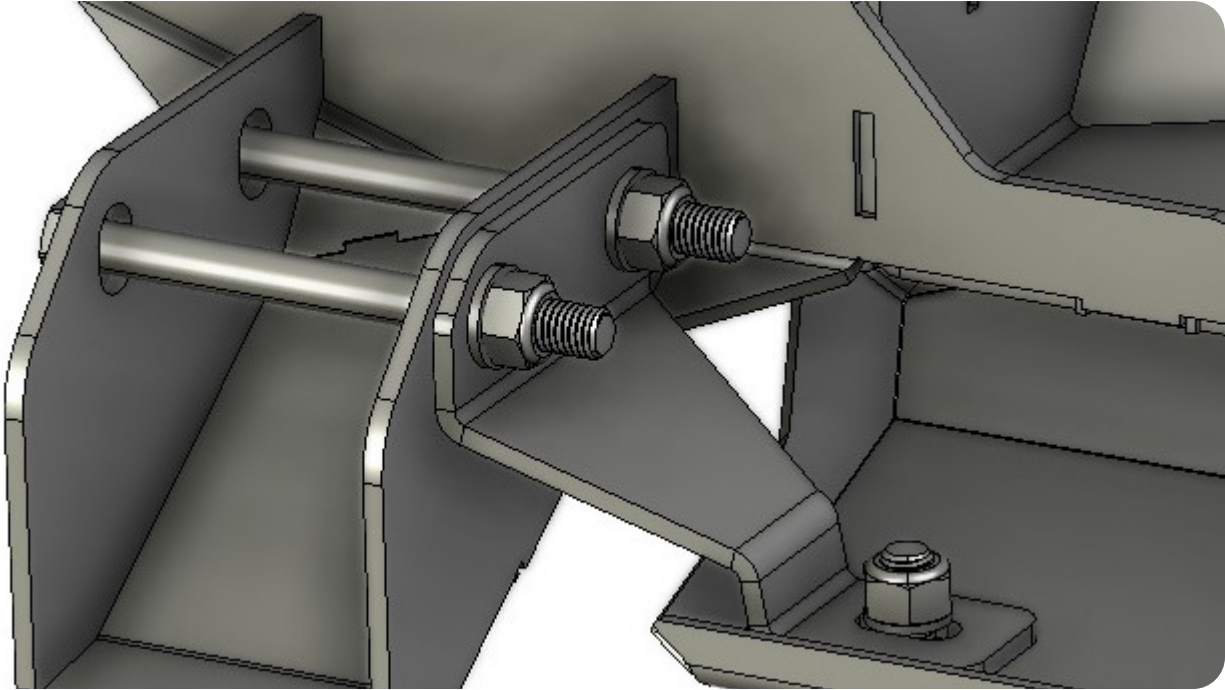


STEP 52 | PLACE THE BUMPER ON THE BUMPER BRACKET, LOOSELY INSTALL THE (2) M12X30 ALLEN BOLTS AND WASHERS DIRECTLY LEFT AND RIGHT OF THE D-RING MOUNT. LOOSELY INSTALL THE (2) M12X35 BOLT AND WASHERS ON THE BACK OF THE UPPER PART OF THE BUMPER. **NOTE: WE RECOMMEND A SECOND PAIR OF HANDS INSTALLING BUMPER TO PREVENT INJURY OR DAMAGE TO VEHICLE**

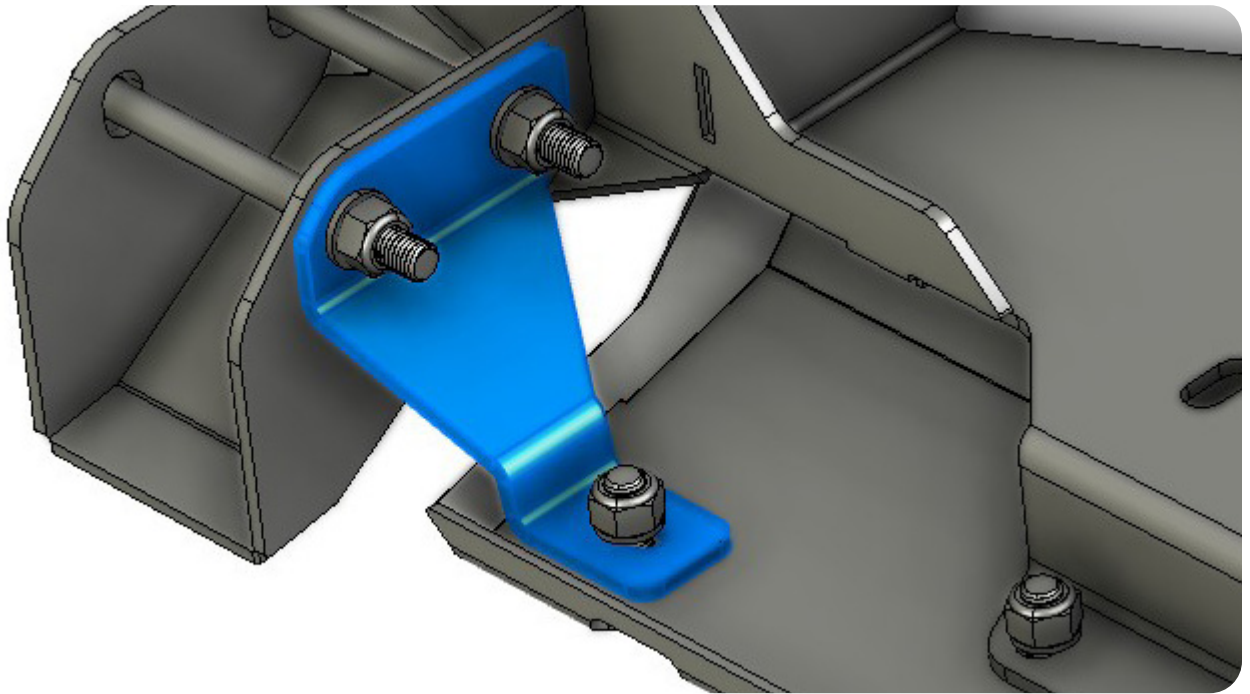




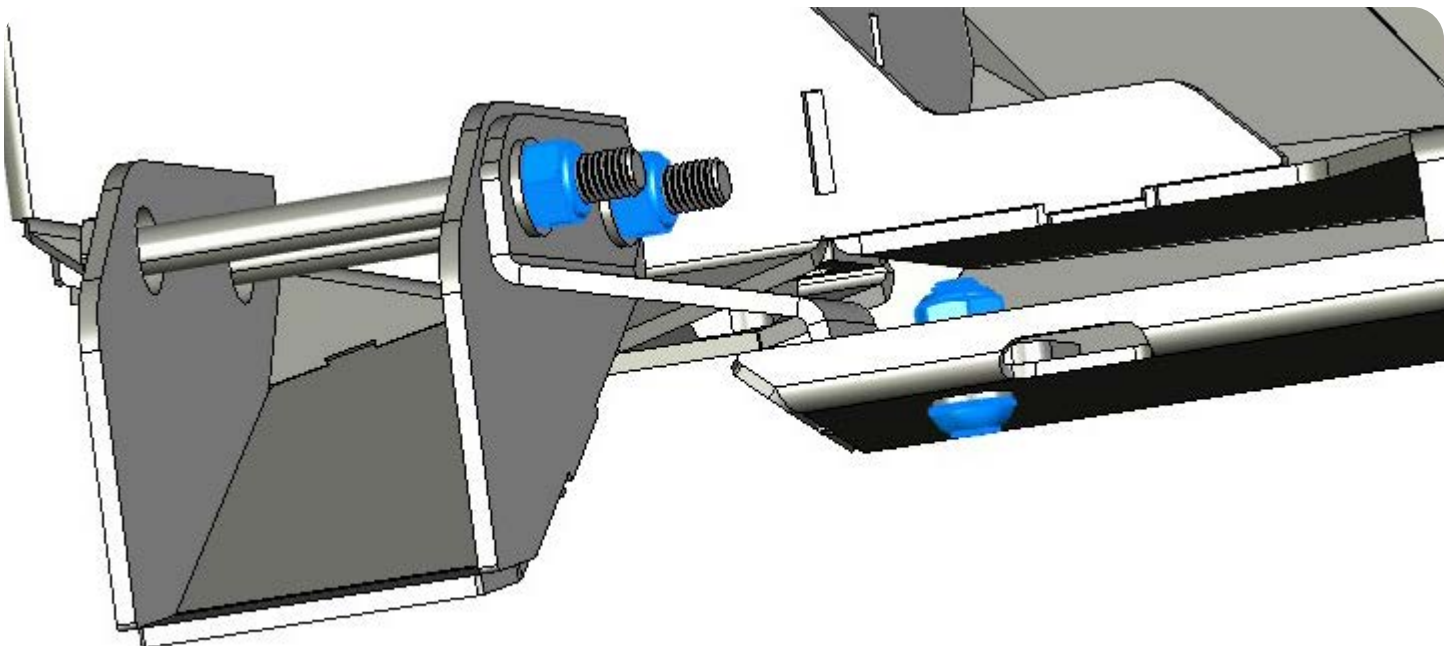
STEP 53 | INSTALL (2) M12X140X35 BOLTS AND WASHERS ON BOTH SIDES OF THE BUMPER.



STEP 54 | THEN PLACE THE BRACKET SUPPORT BEHIND THOSE (2) BOLTS



STEP 55 | LOOSELY INSTALL THE (2) M12 FLAT WASHERS AND NYLOCK NUTS TO SECURE BRACKET IN PLACE.



STEP 56 | USING A #8 ALLEN SOCKET AND 18MM WRENCH, SECURE YOUR M12X30 ALLEN BOLT, WASHERS, AND NUTS TO WINCH MOUNT PLATE AND BRACKET.



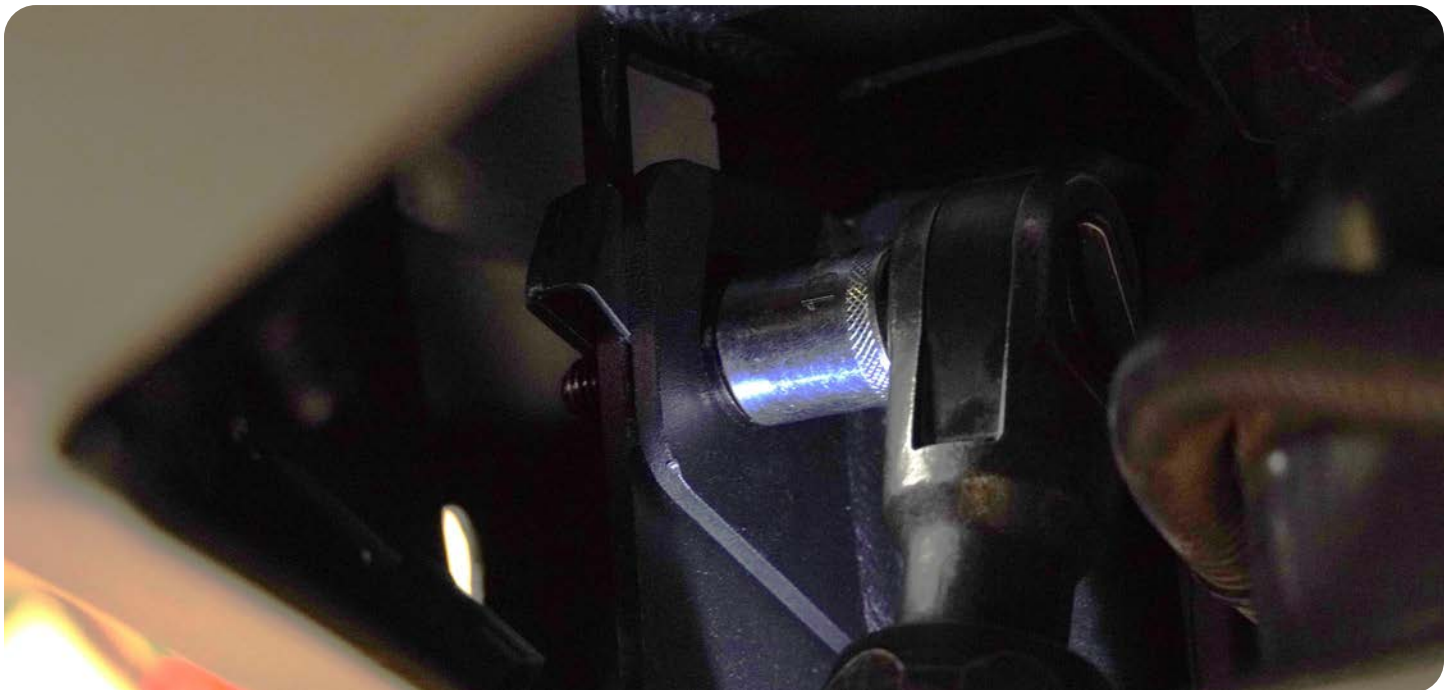
STEP 57 | USING A 18MM SOCKET AND A 19MM WRENCH, SECURE YOUR (2) BOTTOM BOLTS.



STEP 58 | SECURE YOUR FRONT (4) ALLEN BOLTS USING A #8 ALLEN SOCKET.



STEP 59 | USING A 18MM SOCKET, SECURE THE (2) TOP BOLTS BEHIND THE BUMPER.



STEP 60 | IF INSTALLING THE OPTION BULL BAR. REMOVE THE (8) COUNTERSUNK BOLTS USING A #4 ALLEN WRENCH/SOCKET.



STEP 61 | LOOSELY INSTALL THE (8) M6X20 BOLTS AND WASHERS.

ALIGN YOUR BULL BAR WITH YOUR BUMPER, SECURE YOUR BOLTS USING A 10MM SOCKET OR WRENCH.





STEP 62 | TRIM AND REMOVE THE EXCESS WHEEL WELL LINER USING A CUTTING TOOL. (KNIFE, BOX KNIFE, ETC.)



STEP 63 | USING A 10MM SOCKET, REMOVE THE (2) BOLTS ON THE INNER FENDER SUPPORT BRACKET.
REMOVE THE BRACKET.



STEP 64 | CHECK THE BUMPER ALIGNMENT AND ENSURE ALL HARDWARE IS SECURE.



CONGRATULATIONS

YOU ARE FINISHED WITH THE INSTALL OF THE 2020-2023 CHEVY SILVERADO 2500/3500 FRONT BUMPER.

+ SHARE YOUR PICS

WE LOVE SEEING HOW OUR CUSTOMERS USE THEIR DV8 OFFROAD PRODUCTS AND FOLLOWING ALONG WITH YOUR ADVENTURES. TAG US IN YOUR PHOTOS @DV8OFFROAD.WE ENJOY SHARING CUSTOMER PHOTOS ON OUR FEED.



+ WRITE A REVIEW

ARE YOU HAPPY WITH YOUR NEW DV8 OFFROAD PRODUCT? WE WOULD LOVE TO HEAR AND SEE YOUR EXPERIENCE. VISIT THE PRODUCT PAGE AND CLICK "WRITE A REVIEW". ADD A SHORT REVIEW AND UPLOAD A FEW PHOTOS TO BE FEATURED ON THE PRODUCT PAGE.

WWW.DV8OFFROAD.COM

+ NEED HELP?

IF YOU ARE HAVING ANY ISSUES WITH YOUR PRODUCT, PLEASE REACH OUT. DV8 OFFROAD IS A COMPANY OF OFF ROAD ENTHUSIASTS THAT DESIGN AND USE OUR OWN PRODUCTS, SO WE WANT YOU TO BE JUST AS STOKED ON YOUR NEW PARTS AS WE ARE.

P. 855.680.9595

E. SALES@DV8OFFROAD.COM

