

advanced FLOW engineering

Instruction Manual P/N: 46-71430A / 46-71430B

AAM 8.0 IFS – 10 Bolt Front Differential Cover

Make: **Chevrolet/GMC**

Model: **Silverado/Sierra 1500**

Year: **2019-2025**

Engine: **All**

Make: **Chevrolet/GMC**

Model: **Tahoe/Yukon**

Year: **2019-2025**

Engine: **All**

Make: **Chevrolet/GMC**

Model: **Suburban/Yukon XL**

Year: **2019-2025**

Engine: **All**

Make: **Cadillac**

Model: **Escalade/Escalade ESV**

Year: **2019-2025**

Engine: **V8-6.2L**



9

- Please read the entire instruction manual before proceeding.
- Ensure all components listed are present.
- For technical support please call 951-493-7185.
- Ensure you have all necessary tools before proceeding.
- Do not attempt to work on your vehicle when the engine is hot.
- Retain factory parts for future use.

Label	Qty.	Description	Part Number
A1	1	Differential Cover – Raw, Machined Fins (46-71430A)	05-61638A
A2	1	Differential Cover – Black, Machined Fins (46-71430B)	05-61638B
B	10	Screw, Socket Head Cap: M8 x 1.25 x 25, S/S	03-50231
C	10	Washer, Flat: 5/16 AN S/S	03-50228
D	1	Plug, M12 x 1.25	03-50385
E	1	Washer, Aluminum: M12, 15.85MM OD	03-50384
F	1	Plug, 3/8" NPT	03-50158
G	1	Porthole View Gauge (46-41410B)	03-50224
H	1	Plug, 1" NPT (46-71410A)	03-50390

Tools Needed:

- 10mm Socket
- 1-1/2" Socket
- 14mm Socket
- 6mm Hex-Bit Socket
- 8mm Hex-Bit Socket
- Ratchet & Extension
- Prying Bar
- Torque Wrench

Warranty Information available at <https://afepower.com/contact#warranty>

Emissions Disclaimer: This product does not require a CARB EO#.



A1



A2



B



C



D



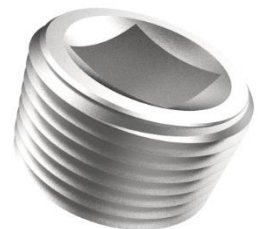
E



F



G



H



Figure A

Refer to Figure A for Steps 1-2

Step 1: Park the vehicle on level ground and engage the parking brake. Allow the vehicle to cool completely before beginning installation.

Step 2: Remove the four (4) hex-head bolts from the stock aluminum skid plate, then remove the skid plate.

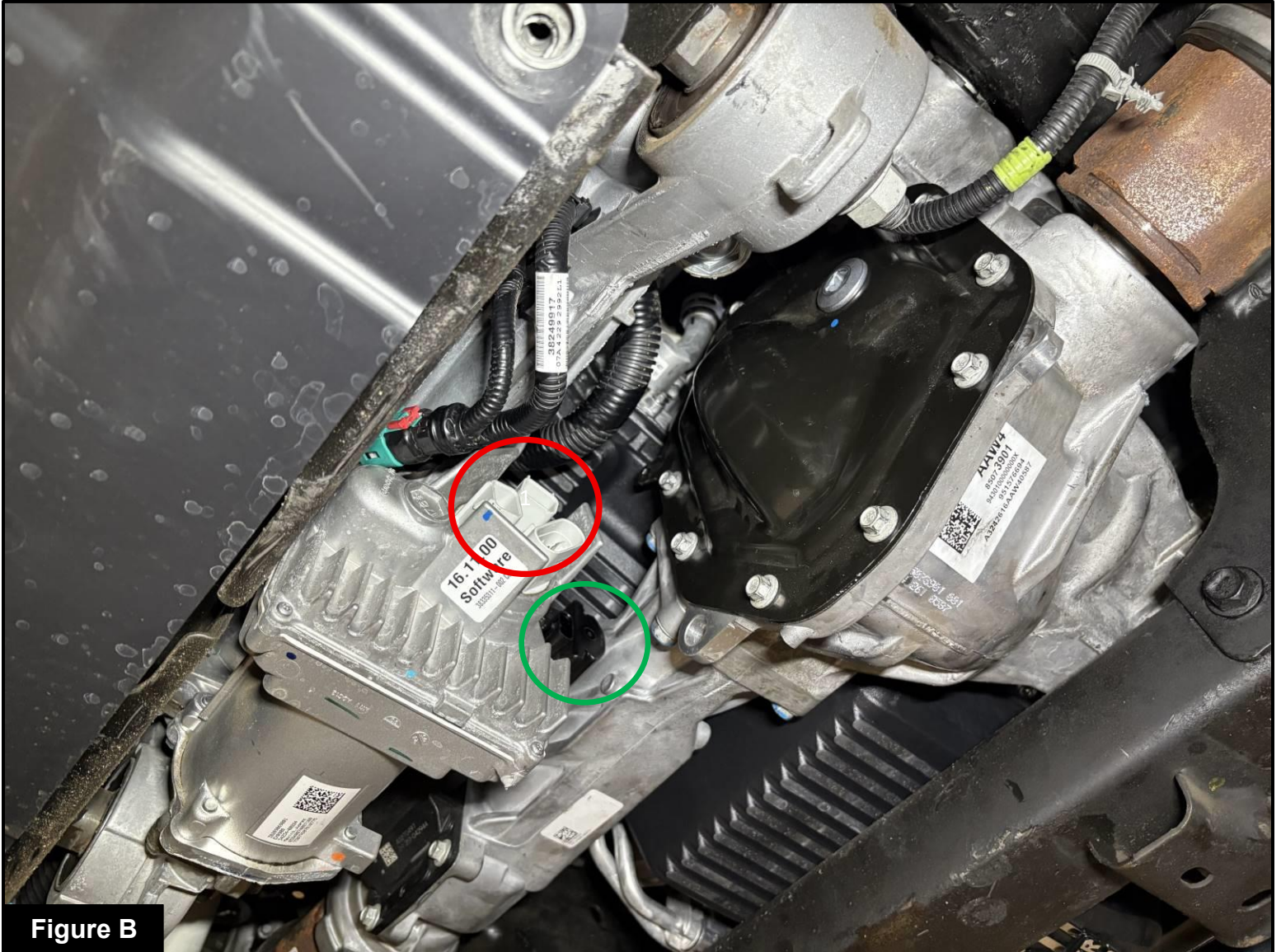


Figure B

Refer to Figure B for Steps 3-5

Step 3: Unplug the three (3) electrical connectors from the steering and move the wire harness away from the differential cover.

Step 4: Unplug the electrical plug from the differential and move the wire harness away from the differential cover.

Step 5: Loosen all ten (10) stock hex-head screws.



Figure C

Refer to Figure C for Steps 6-8

Step 6: Remove eight (8) of the ten (10) stock hex-head screws from the stock differential cover.

Step 7: Carefully pry the stock differential cover away from the differential housing and allow the oil to drain.

Step 8: Remove the remaining two (2) hex-head screws holding the stock differential cover.

Use caution when removing the stock differential cover.

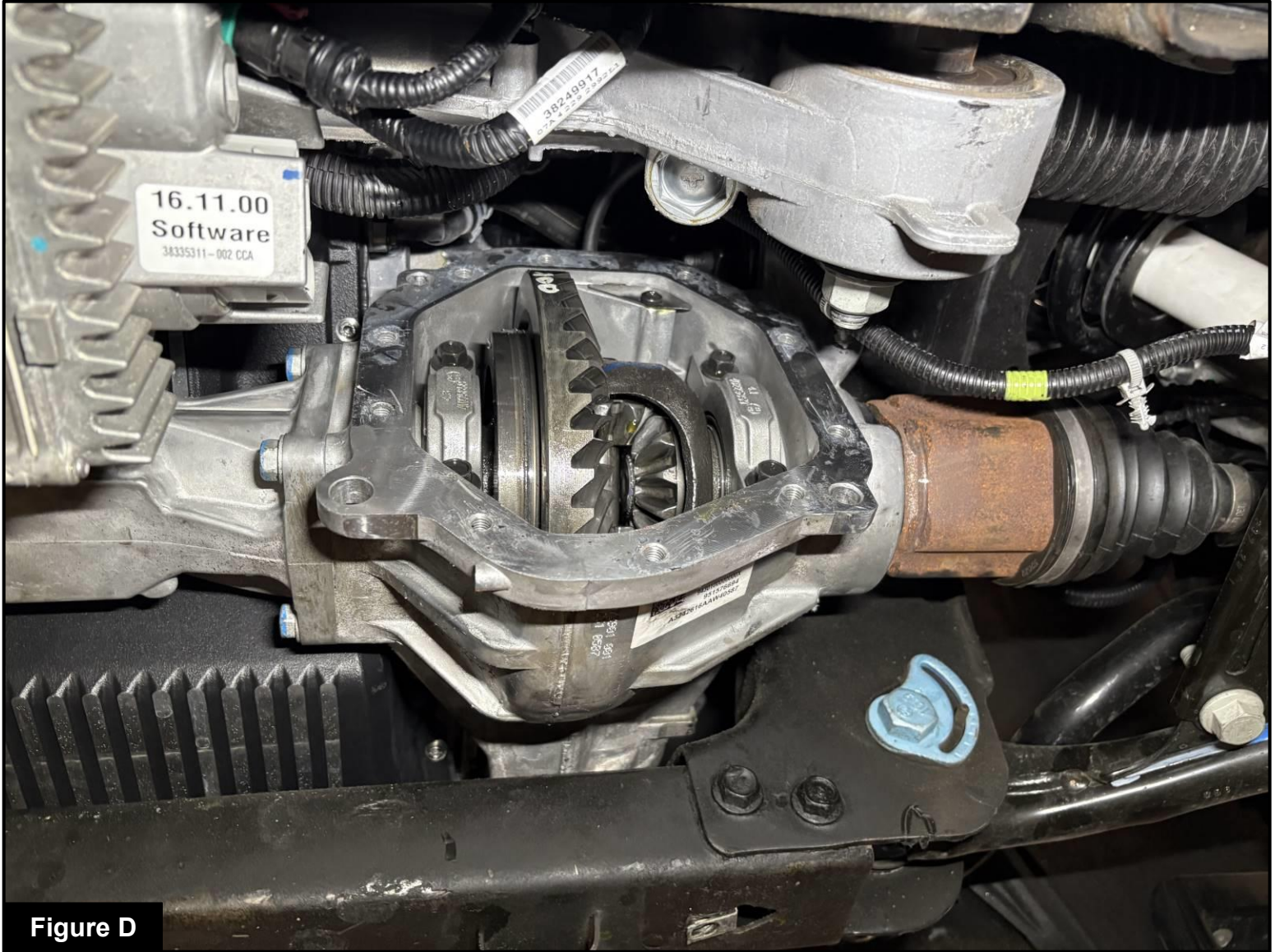


Figure D

Refer to Figure D for Step 9

Step 9: Thoroughly clean the mating surface.

Note: Clean the surrounding area of debris.

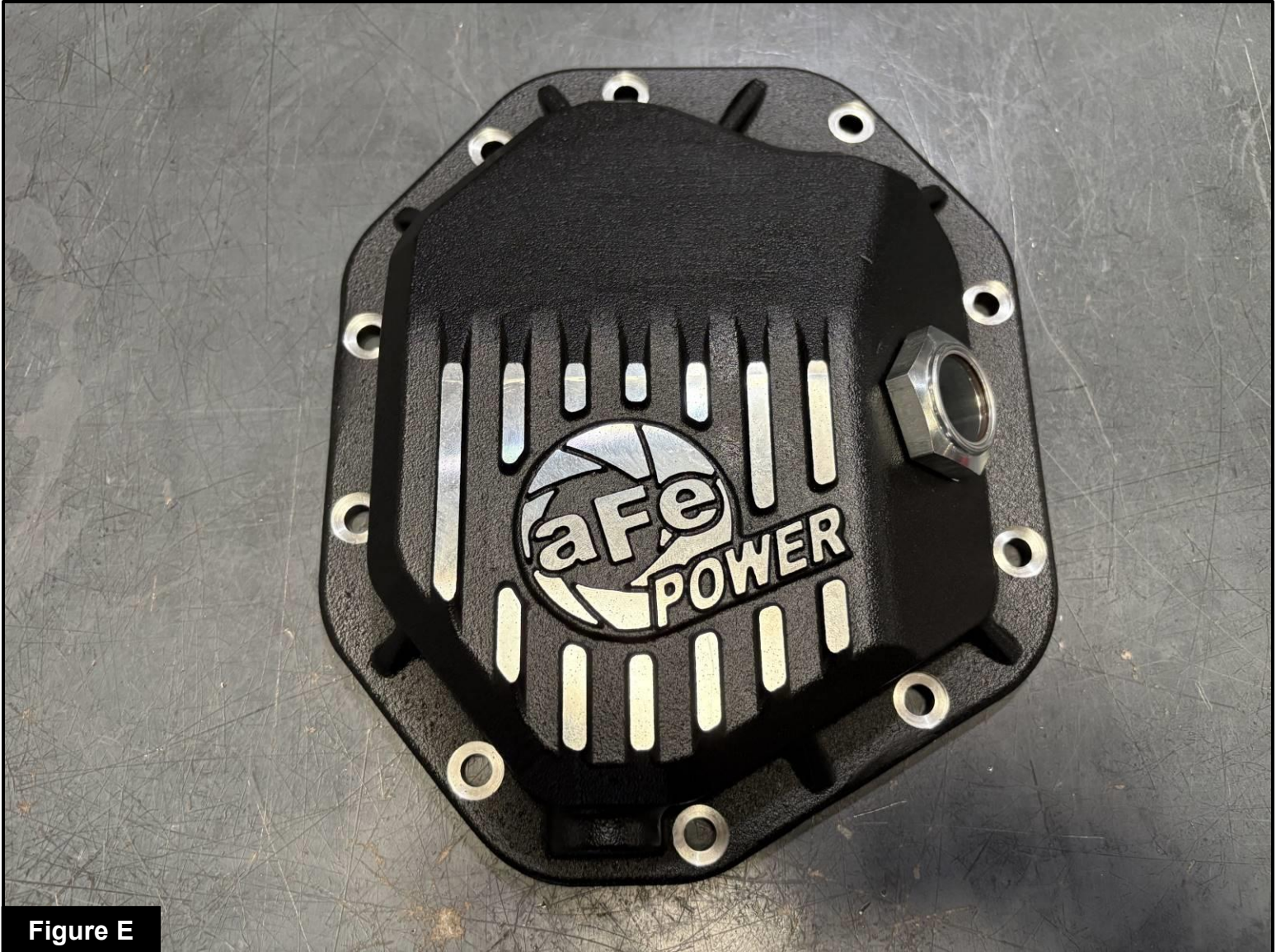


Figure E

Refer to Figure E for Step 10

Step 10: Apply Teflon pipe sealant to the threads of the supplied 1" NPT fitting and install it into the large side port of the aFe differential cover. Tighten securely.

- If installing cover **46-71430A**, use the 1" NPT plug included in the kit.
- If installing cover **46-71430B**, use the 1" NPT sight glass included in the kit.

Note: Do not overtighten.

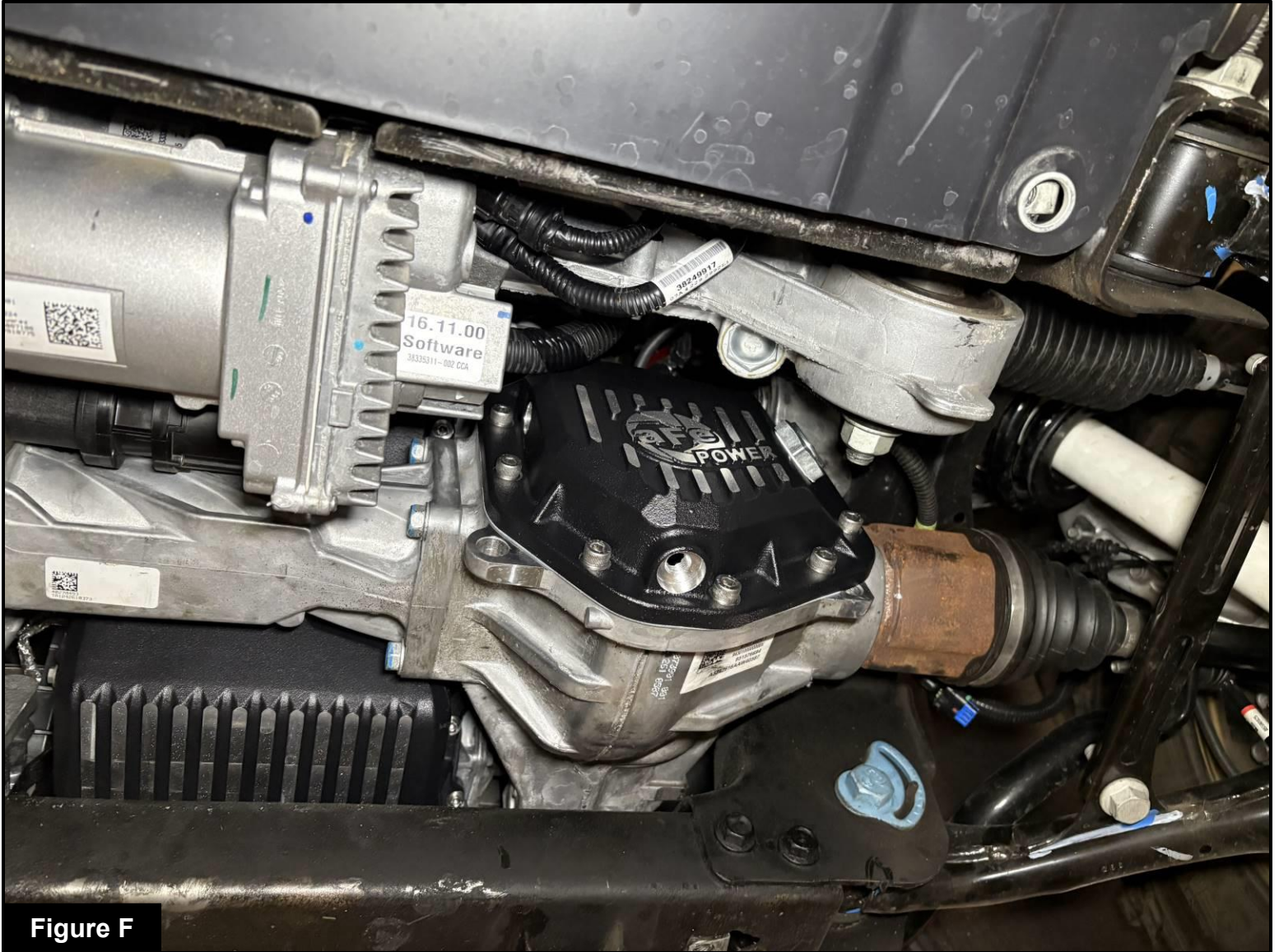


Figure F

Refer to Figure F for Steps 11-13

Step 11: Carefully install the aFe differential cover and a new differential cover gasket (not included) until it contacts the differential housing.

Step 12: Install the supplied ten (10) socket head cap screws and ten (10) washers to secure the aFe differential cover.

Step 13: Torque the screws to **15 ft-lbs (20 Nm)** in an X-pattern.

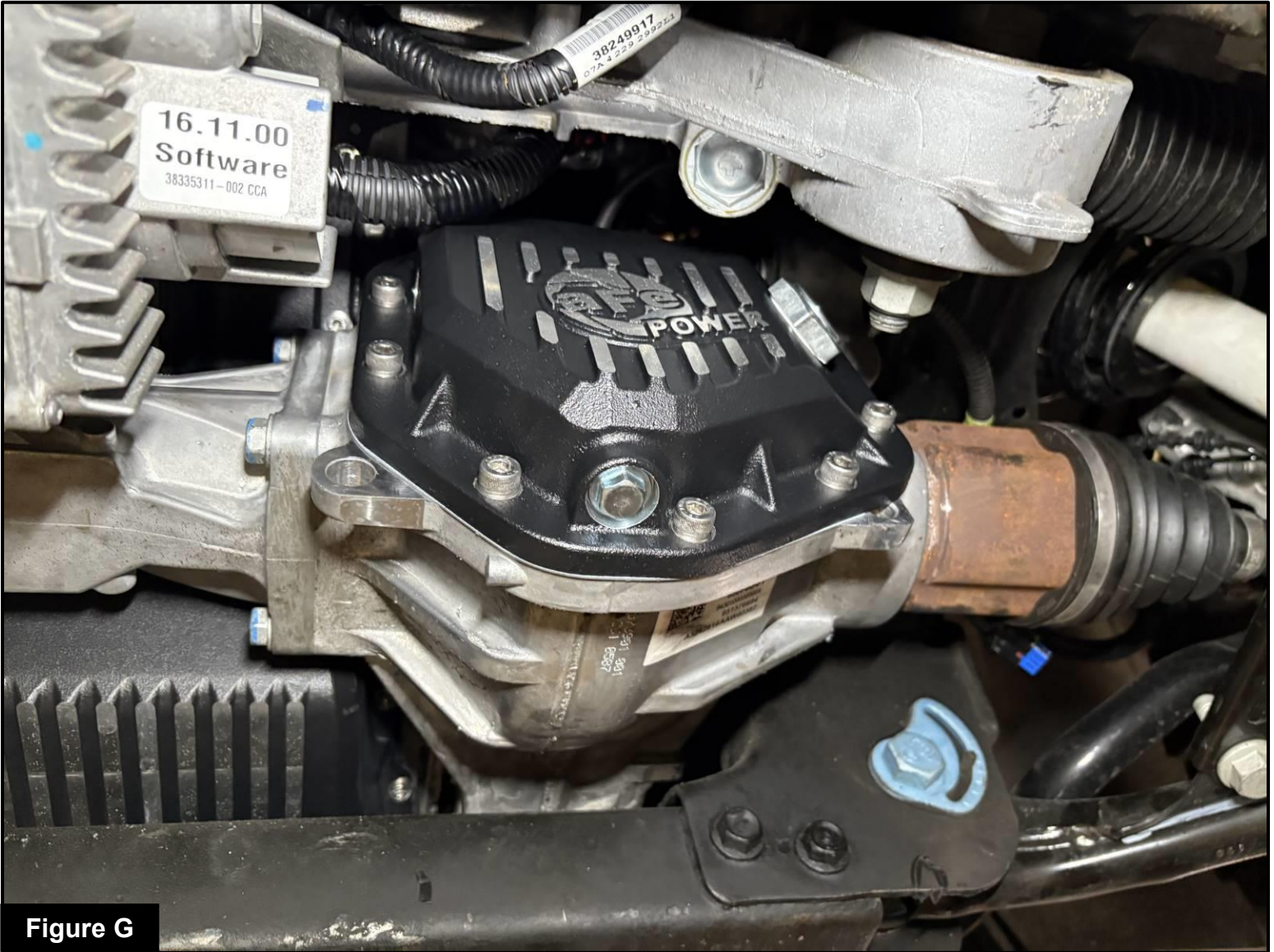


Figure G

Refer to Figure G for Step 14

Step 14: Install the supplied M12 x 1.25 drain plug and crush washer into the bottom of the aFe differential cover and torque to **20 ft-lbs (27 Nm)**.



Figure H

Refer to Figure H for Step 15

Step 15: Using the 3/8" side port on the aFe differential cover, fill the differential with the vehicle manufacturer's recommended gear oil until it begins to flow out of the 3/8" NPT side port.

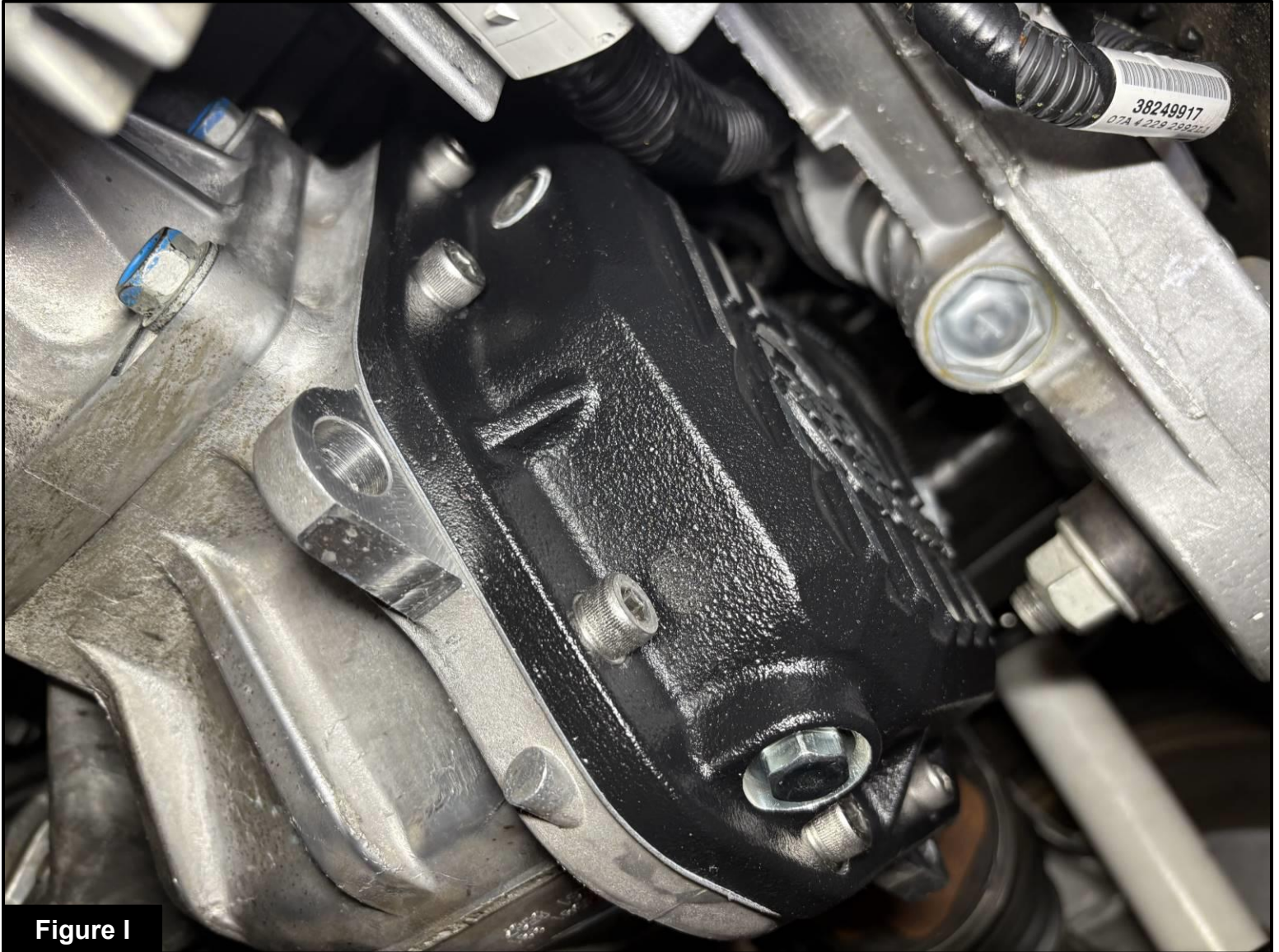


Figure I

Refer to Figure I to Steps 16-17

Step 16: Apply Teflon pipe sealant to the threads of the 3/8" NPT plug.

Step 17: Install the 3/8" NPT plug into the side port of the aFe differential cover and tighten securely.

Note: Do not overtighten.



Figure J

Refer to Figure J for Steps 18-19

Step 18: Reinstall the stock aluminum skid plate using the four (4) stock hex-head bolts.

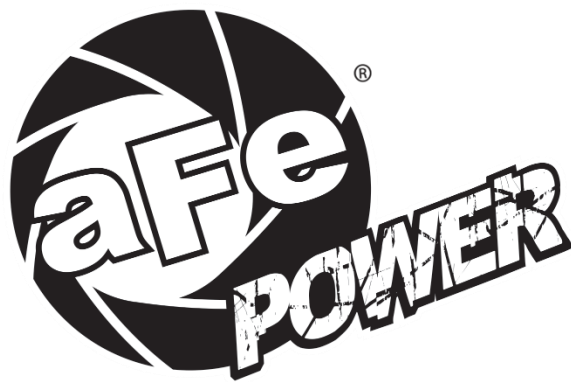
Step 19: Installation is complete.



This Page Intentionally Left Blank



This Page Intentionally Left Blank



advanced FLOW engineering, inc.

Corona, CA 92879

<https://afepower.com/contact>