

INSTALLATION GUIDE

Transmission Cooler, Fits 2021+ GM T1 SUV
SKU: MMTC-T1-21

TABLE OF CONTENTS

1. RESOURCES & CONTACT INFO
2. IMPORTANT SAFETY INFORMATION
INSTALL TIME & DIFFICULTY
REQUIRED TOOLS
5. DISPOSAL & WARRANTY INFORMATION

RESOURCES & CONTACT



CALL 1.877.466.4744

CUSTOMER SERVICE HOURS: MON-FRI 9:00AM-7:00PM EST



@MISHIMOTO



@GOMISHIMOTO



MISHIMOTO



@MISHIMOTO



ENGINEERING BLOG

WWW.MISHIMOTO.COM/ENGINEERING

IMPORTANT SAFETY INFORMATION

- › Mishimoto recommends you use safety glasses and protective gloves during the installation of our products
- › Raise vehicle only on jack stands or on a vehicle lift
- › Allow vehicle to cool completely prior to attempting installation
- › Do not run the engine or drive the vehicle while overheating; serious damage can occur
- › Please dispose of any liquids properly
- › Mishimoto is not responsible for any vehicle damage or personal injury due to installation errors, misuse, or removal of Mishimoto products
- › If you need any assistance while installing our products, reach out to our Customer Service Team at 1-877-GOMISHI

REQUIRED TOOLS

1/4" DRIVE RATCHETING WRENCH	8MM ALLEN KEY OR SOCKET (FOR TRANSMISSION FLUID FILL PLUG)
1/4" DRIVE 10MM SOCKET	
1/4" DRIVE TORQUE WRENCH	T15 TORX KEY OR TORX SOCKET
3/8" DRIVE RATCHETING WRENCH	PICK TOOLS
3/8" DRIVE EXTENSIONS (3" & 6")	PUSH CLIP PLIERS
3/8" DRIVE 13MM SOCKET	TRANSMISSION FLUID (1-2 QUARTS).
3/8" DRIVE TORQUE WRENCH	FLUID TRANSFER PUMP
13MM RATCHETING WRENCH	FLUID ABSORPTION PADS OR TOWELS
3MM ALLEN KEY OR ALLEN KEY SOCKET	

INSTALL TIME: 1 HOUR

INSTALL DIFFICULTY:     

INSTALLATION INSTRUCTIONS

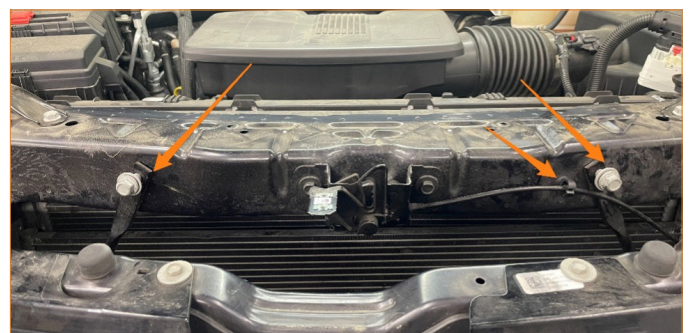
1. Allow the vehicle to cool completely as the transmission fluid system will be opened at can cause burns.
2. Open the hood and remove the 2x T15 Torx screws holding the hood latch handle to the vehicle and remove the handle.



3. Remove all 9x push clips that secure the upper radiator panel to the vehicle and remove the panel from the vehicle.

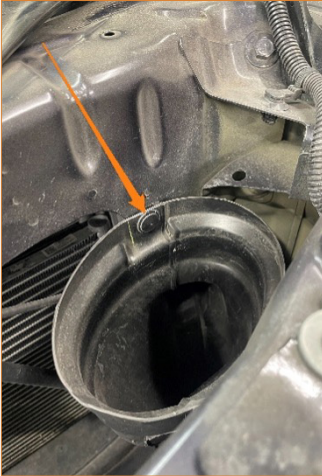


4. Remove the 2x 13mm bolts that secure the radiator support tie bars to the radiator support and move them down and out of the way. Unclip the hood latch release cable from the clip to move it out of the way.



Continued on next page

5. Remove the push clip from the intake duct to move the duct out of the way for further steps.



6. Place absorbent pads or towels underneath each end of the factory transmission cooler to absorb anything that may come out of the transmission cooler when removing the fittings. Loosen and remove the 2x 13mm nuts securing the transmission lines to the transmission cooler.



7. Remove the 10mm bolt securing the transmission cooler to the radiator on the passenger side. Then, remove the fittings from the ends of the transmission cooler, slide the cooler to the passenger side of the vehicle, and carefully maneuver the cooler out of the vehicle. (See image on the right.)



8. Take the Mishimoto bracket and install it on the end of the Mishimoto transmission cooler with a 3mm hex key. Make sure that the washer and lock washer are installed on the bolts.

9. Maneuver the Mishimoto cooler into the vehicle. It may be necessary to push the intake duct out of the way to make room for the cooler. Place the cooler in the same position as the factory cooler, sliding the bracket installed in the previous step into the slot on the driver's side. The mount on the radiator on the passenger side should hold the cooler up while the 10mm bolt is installed and torqued to 80 in-lbs.



10. Inspect the seal on the transmission lines and make sure that it is present and clean. Reinstall the transmission lines and secure them with the included bolts. Tighten the 13mm bolts to 16 ft-lbs. (See next page)

Continued on next page



- 11.** Turn on the vehicle and check for leaks. Make sure not to close the hood as the hood latch handle is still removed.
- 12.** Clean up any spilled transmission fluid from the area. Realign the radiator support bars and torque the 2x 13mm bolts to 43 ft-lbs.
- 13.** Reattach the intake duct and re-fasten the push clip securing it to the core support.
- 14.** Reinstall the upper radiator panel and fasten all 9x push clips. Reinstall the hood latch handle with the 2x T15 screws and torque them to 22in-lbs.
- 15.** Follow the factory procedure to check the transmission fluid level by getting the temperature up to 165°F and checking the levels while the vehicle is running. It may be necessary to add 1-2 quarts of fluid to make up for the larger cooler capacity.

Congratulations, you've completed your installation.

Continued on next page

DISPOSAL INSTRUCTIONS

- › Do not dispose of any product as unsorted municipal waste. Use separate collection facilities. Contact your local authority for information regarding the collection systems available.
- › Never improperly dispose of any coolant, oil, or other chemicals

WARRANTY INFORMATION



- › All claims must be accompanied with a picture of the Mishimoto product showing the issue for which the claim is being submitted.
- › Mishimoto asks that the customer inspect their purchased item for any damage immediately upon arrival.
- › Any product deemed dead on arrival (DOA) must be claimed within 14 business days of delivery. Claims outside of this time frame will not be covered under the Mishimoto Lifetime Warranty.
- › This warranty does not include payment and/or reimbursement of the cost of labor in connection with the removal of any product returned pursuant to the warranty policy or in connection with the installation of any replacement items provided under the warranty policy.
- › Mishimoto has the right to refuse a claim at any time.

- › When Mishimoto accepts a claim, Mishimoto retains full discretion to choose if it will: (i) repair or replace purchaser's original Mishimoto product; (ii) replace purchaser's original Mishimoto product with the most current available model; or (iii) provide the purchaser with a gift card redeemable on **Mishimoto.com** in the amount of the original purchase price of the original Mishimoto product. The provision of a replacement of a Mishimoto product is subject to availability and Mishimoto retains the right to substitute any warranty claim item with a comparable item or credit at any time.
- › If Mishimoto determines that it will provide a replacement item in connection with a claim under this warranty policy, and such item is out of stock, Mishimoto will place the customer on backorder and ship the replacement product to the purchaser once it becomes available.
- › Mishimoto is not liable for incorrect shipments in connection with a claim if a claim form is completed incorrectly, or if a model number is not included in a claim.
- › If you have a vehicle equipped with an automatic transmission, please make sure to specify this within the text box on the claim form. Mishimoto is not responsible for incorrect replacement shipments if transmission type is not indicated.



WARNING
Cancer and
Reproductive Harm
www.P65Warnings.ca.gov

- › This product can expose you to chemicals which are known to the state of California to cause cancer. For more information visit:
www.p65warnings.ca.gov