

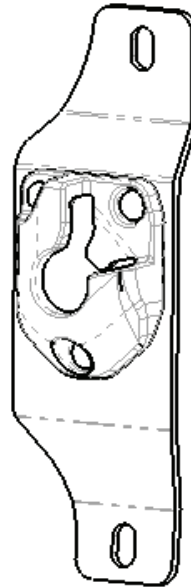
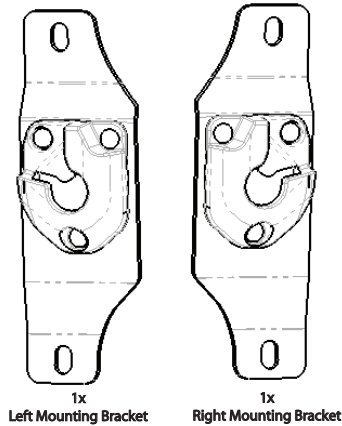
MOUNTING BRACKET INSTALLATION - CHEVROLET COLORADO / GMC CANYON 2015+

PLEASE READ ENTIRE INSTRUCTIONS BEFORE PROCEEDING WITH INSTALLATION

Part #: 74607-01A

**Recommended Tools:**

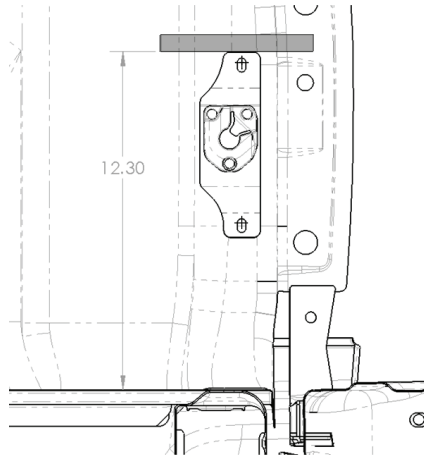
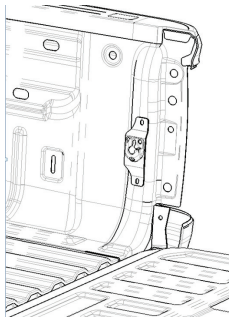
- #2 Phillips Screw Driver
- Drill
- 1/8" & 21/64" Drill Bits
- Ratchet
- 13mm Socket & Wrench
- Circular File
- Tape
- Thread locker
- Primer



Identify handed brackets. Straight edge of steel brackets will face toward the rear of the vehicle. The brackets will be marked as well, R for right-hand side (passenger) and L for left-hand side (driver).

(Passenger Side Shown)

**1**

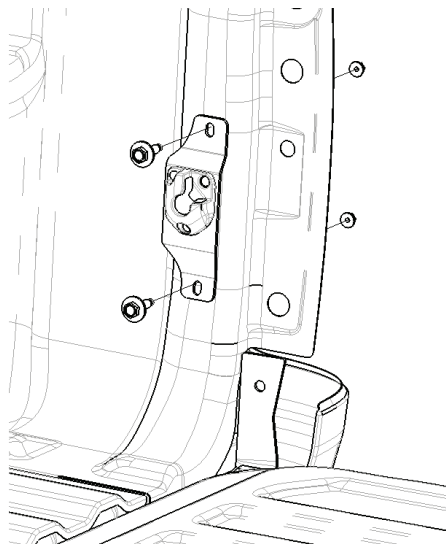


Remove the 2 Phillips screws that are holding the tail lights in place. Carefully pull back to remove tail lights.

Mark height of 12.3" with Tape horizontally on D-Pillar, as shown, with bottom edge of tape marking the height.

While aligning Bracket to bottom edge of tape and centering mounting face of steel bracket to flat surface of D-Pillar, mark (Center Punch) & drill holes with 1/8" drill bit. After pilot drilling holes to 1/8", drill out holes to final size with 21/64" drill bit. Use file to remove burrs. Apply primer to edge of hole, allow primer to dry. Repeat for other side.

**2**



Assemble Mounting Bracket using the M8 bolts & nuts as shown. Tighten & torque to 22ft. lbs. Replace the tail light assembly. Repeat for other side.

**3**