

INSTALLATION INSTRUCTIONS

PRODUCT: ALL LIGHTS ON®

FPE-2020-7
Revised May, 2024
Page 1 of 3

INSTRUCTIONS FOR: 2008-2013 Chevrolet Impala

ESTIMATED INSTALLATION TIME: 30 minutes

TOOLS REQUIRED: Philips head screwdriver, flathead screwdriver, knife, pliers



STEP 1: The Body Control Module (BCM) is located under the dash on the driver's side of the vehicle just above the OBD diagnostic port. To gain access to the BCM, remove the lower knee bolster cover panels of the dash. Remove the two philips head screws and gently pull the dash panel outward.



Remove two phillips head screws that retain the steel panel and remove the panel.



Remove three plastic expansion clips by gently prying out the center cap with a small flat blade screwdriver. Once the center cap is removed you can remove the remainder of the plastic clip.



INSTALLATION INSTRUCTIONS

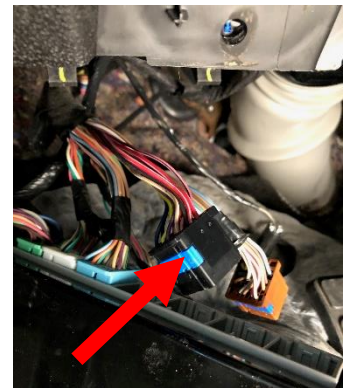
STEP 2: The Body Control Module (BCM) is located under the dash on the driver's side of the vehicle just above the OBD diagnostic port. To allow for access to the connectors on the BCM you must remove the BCM from its secured position. Release the two plastic retaining tabs on the bottom of the BCM by gently pushing them down while simultaneously pulling the BCM outward.



Lower the BCM to allow for access to the connectors.

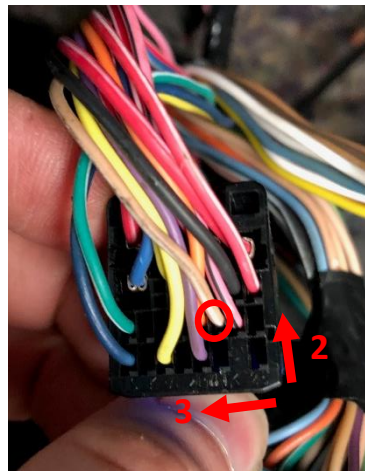


With the BCM removed from its perch, carefully remove any zip ties that are retaining the electrical harness to the chassis or dash. To improve access, remove the white, pink, brown, and black connectors from the BCM by depressing the locking tab on each connector. Remove any tape or zip ties on wires that route to the Black connector of the BCM. Remove any tape or wrap to expose enough of the wires to install the All Lights On module (3-4" of material).

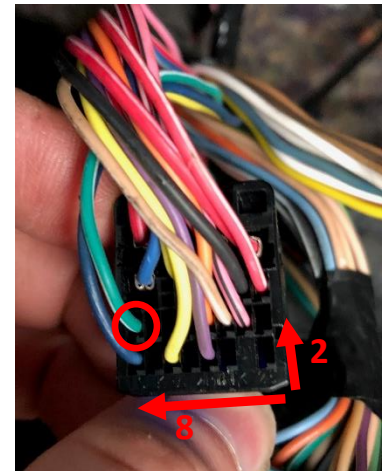


STEP 3: Locate Pin 16 (high beam control). The wire is *brown or tan with a white stripe*. From the bottom right side of the connector, count over 3 pins and up 2 pins to locate the wire. Route this wire through the circuit board and connection labeled "highs".

STEP 4: Locate pin 11 (fog lamp control). The wire is *green with a white stripe*. From the bottom right side of the connector, count over 8 pins and up 2 pins to locate the wire. It will be all the way on the left side of the connector. Route this wire through the circuit board and connection labeled "fogs".



Pin 16: High Beam Signal

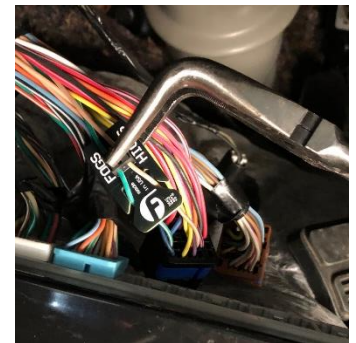
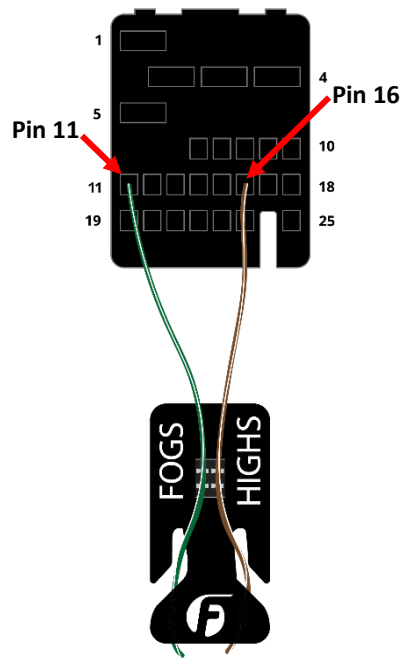


Pin 11: Fog Lamp Signal

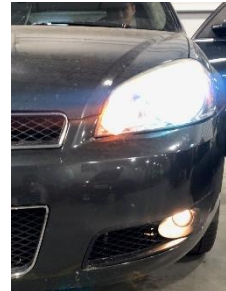
INSTALLATION INSTRUCTIONS

STEP 5: With correct wires routed through the All Lights On circuit board and connector (double check your wires and pins). Position the small black cover over the wires and squeeze it downward with a pair of pliers to force the wires into the insulation displacement prongs. Install all connectors back into the BCM. Install any other connectors that were removed and re-assemble the dash components

NOTE: The connector cover is a one-time use part. Double check the pin locations before installing the cover, it cannot be removed and re-used.



Operation: low beams and fog lights will operate normally, when high beams are activated, the fog lamps and low beams will remain on.



TROUBLESHOOTING

If you experience any problems with the operation of the All Lights On:

1. Verify that the proper pins have been selected on the proper connector of the Body Control Module or Lighting Control Module. Recount pin locations as identified in steps 3 and 4. **DO NOT** go by wire color, as this can vary across models and applications.
2. Confirm you have properly seated the connector cover with a pair of pliers. The insulation displacement type connector that is utilized must pierce the wire sheathing and make contact with the copper wire. If the wire sheathing is not properly pierced, a connection cannot be made.
3. Test operation with the engine running and high beams enabled. Not all models of vehicles will provide power to the fog lamps in the accessory position.