



✓ **ENGINEERED** ✓ **TESTED**

✓ **MANUFACTURED** ✓ **PUNISHED**

[ALL IN THE USA]

UMI 3046
C5/C6 Brake Conversion Bracket
1978-1988 GM G-Body
1982-2004 GM S-Series Truck (2WD only)



Contents:

Part #	Quantity	Description
3046A	2	Brake Bracket
	4	3/8-24 x 1 Gr 8 Bolt
	4	3/8 SAE Washer
	4	M14-2.0 x 30mm Socket Head Bolt

Additional Parts Required:

This kit is intended to use Chevrolet Corvette C5 and base model C6 front brake rotors, caliper assembly, and brake pads.

Wilwood SLC56 is a common aftermarket caliper for this application

Hub and bearings are required and not included. UMI Performance recommends using UMI P/N 3047. This kit includes aluminum Wilwood hub, bearings, and seals.

Drill and tap is required to complete installation of this kit.

Drill: Letter size Q (.332 in)

Tap: 3/8-24



Follow all proper shop safety practices. Properly support vehicles when working underneath.

1. Lift the front of the vehicle to unload the suspension and properly support. Use your preferred method; jack stands or vehicle lift.
2. Remove both front wheels.
3. Remove factory brake calipers and flex brake lines from vehicle.
4. Remove brake rotor. Set aside the spindle nut and washer, you **WILL** reuse this with desired hub
5. Separate ball joints and remove spindle.
6. Remove the (3) bolts on the factory dust shield, you **WILL NOT** reuse the dust shield
7. Cut the factory caliper mounting bracket from spindle, shown by the dotted lines. Use your preferred method : Band saw, cutting wheel, sawzall, etc. **DO NOT** cut through the mounting bolt holes! See arrows



8. Slight grinding may be required in this area to ensure that the bracket sits flush on the threaded mounting bosses



9. Temporarily attach 3046 bracket using one of the factory dust shield bolt hardware. Leave one bolt out and center the hole over the threaded boss. Use the bracket as a drill guide
10. Use size "Q" drill bit to drill the spindle dust shield mounting boss. The top is a blind hole, do not drill completely thru.
11. Tap hole using 3/8-24 bottoming tap. Use cutting fluid or oil on the tap.
12. Install 3/8-24 bolt in tapped hole.
13. Remove factory dust shield bolt that was temporarily installed. Drill and tap 2nd bracket hole.



14. Remove bracket and clean tapped holes with brake clean or compressed air.
15. Install bracket with 3/8-24 bolts and washers. Use Blue Loctite 242 (not included) on the bolts to ensure retention.
16. Torque 3/8 fasteners to 35 ft-lb.



17. Reinstall spindle onto the car
18. Tighten upper and lower balljoints and install cotter pins.
19. Install desired hub onto spindle pin. Follow hub instructions for assembly of bearings, seals, and torque specs. UMI Performance recommends the use of P/N 3047 hub and bearing kit.
20. Install Lug studs into hub.
21. Install brake rotors onto hub. Install one lugnut to hold the rotor to the hub while installing brakes.
22. Install C5 abutment bracket onto the outside of the 3046 bracket. Use the included M14-2.0 x 30mm socket head cap screws. Tighten to 90 ft lbs.



Note: Wilwood SLC56 calipers do not use the abutment bracket, it is a fixed caliper. The mounting ears on the caliper bolt directly to the 3046 bracket.

24. Install caliper and brake pads.
25. Install brake lines.
26. Bleed brake system.
27. Test drive and properly bed brake pads. It is advised to test your braking system in a safe area before normal operation.



Hub information:

1. UMI P/N 3047 hub and bearing kit is a direct bolt-on and accepts factory C5 rotors via face mount configuration.
2. Inner bearing: Set A6 race LM67048
3. Outer bearing: Set A34 race LM12748
4. Wheel studs are **NOT INCLUDED**.
5. Wheel stud thread is ½-20. Please choose high quality wheels studs after determining wheel thickness as well as the thickness of any spacers required.
6. Additional Tech information for hub can be found at <http://www.wilwood.com/Hubs/HubProd.aspx?itemno=270-12304>



Brake information:

The chart below shows each item needed to perform this installation using factory GM components. Each item is supplied with a GM part # and can be purchased at a local GM dealership.

Quantity	GM Part Number	Item Description
1	12530682	C5 Caliper- Black (Guide Pin Bolts Included)
1	12530683	C5 Caliper- Black (Guide Pin Bolts Included)
1	88895128	Z06 Caliper- Red (Guide Pin Bolts Included)
1	88895129	Z06 Caliper- Red (Guide Pin Bolts Included)
1	10445856	GM Rotor
1	10445857	GM Rotor
2	12455799	Pad Abutment Bracket
4	10139097	Banjo Bolt Cooper Washers (Pack of 10- 21012386)
2	11569590	Banjo Bolt (Old GM # 22163795)
4	12530703	Guide Pin Boot
4	12530697	Pad Abutment Guide Pin
2	10333772	Front Brake Hose- Caliper
1 2	Napa Part # 83212A OR Raybestos # H5644	Springs and Shim (Caliper Hardware Kit)
1 Set	88952008	Z06 Front Brake Pad Set w/ Shims & Springs (Optional)

Exploded view of the 1997-2004 C5/Z06 Caliper, please use as a reference during installation.

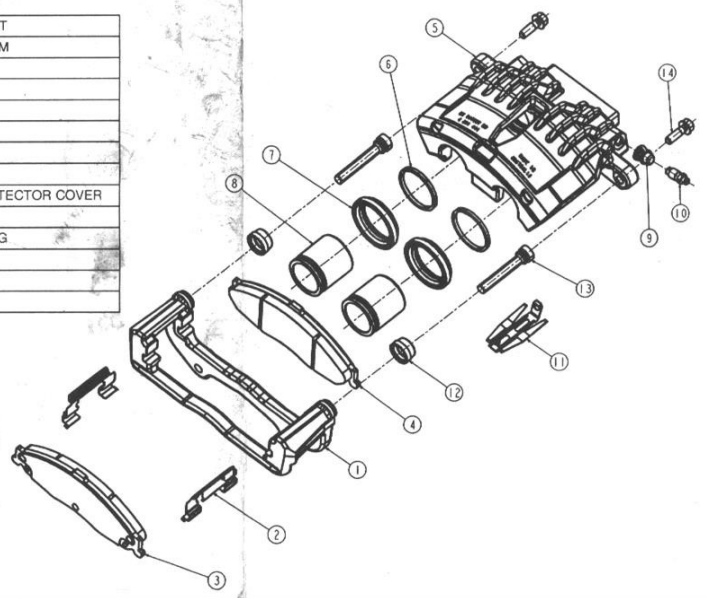
Wilwood SLC56 description

SLC56 front calipers are engineered as a high performance street and custom replacement for Corvettes and hot rods using Corvette suspension. SLC56 calipers add high-tech styling and provide the positive response and balanced pad loading provided by a fixed mount, four piston caliper.

The SLC56 is a direct bolt-on replacement for the OE calipers on all models of the C5 from 1997 to 2004, and all base model C6's from 2005 to 2013 using 12.8" diameter front rotors. The calipers attach directly to the Corvette spindle without the need for brackets or adapters and accept all types of OE banjo bolt style brake hoses.

Uses Wilwood 7416 pad plate brake pads.

1	ABUTMENT BRACKET
2	PAD ABUTMENT SHIM
3	OUTER PAD ASSY
4	INNER PAD ASSY
5	CALIPER BODY
6	SEALING RING
7	PISTON BOOT
8	PISTON
9	BLEED SCREW PROTECTOR COVER
10	BLEED SCREW
11	ANTI RATTLE SPRING
12	GUIDE PIN BOOT
13	GUIDE PIN
14	GUIDE PIN BOLT



DISCLAIMER OF WARRANTY

THE PURCHASER ACCEPTS ALL RESPONSIBILITY FOR THE FINAL USE OF THE PRODUCTS PURCHASED AND SHALL HOLD UMI PERFORMANCE INCORPORATED AND ITS REPRESENTATIVES HARMLESS IN ANY LEGAL PROCEEDING ARISING FROM THE USE OF SUCH PRODUCTS.

UMI PERFORMANCE INCORPORATED DOES NOT WARRANT, GUARANTEE, OR MAKE ANY REPRESENTATION REGARDING THE USE, OR THE RESULT OF THE USE OF ANY PERFORMANCE PRODUCT MANUFACTURED OR DISTRIBUTED BY UMI PERFORMANCE INCORPORATED. PURCHASER ASSUMES THE ENTIRE RISK AS THE RESULT AND PERFORMANCE OBTAINED FROM THE INSTALLATION AND USE OF SAID PERFORMANCE PRODUCTS. UMI PERFORMANCE INCORPORATED ASSUMES NO RESPONSIBILITY FOR AND HEREBY DISCLAIMS ALL WARRANTIES, ORAL OR WRITTEN, EXPRESS OR IMPLIED INCLUDING WITHOUT LIMITATION, THE WARRANTIES OF MERCHANTABILITY AND OF FITNESS FOR A PARTICULAR PURPOSE.

ALL PARTS ARE WARRANTED TO BE FREE OF DEFECT AT THE TIME OF PURCHASE. WARRANTY IS ONLY EXTENDED TO REPLACEMENT OF PARTS FROM UMI PERFORMANCE INCORPORATED AND DOES NOT COVER LABOR, TOWING OR ANY OTHER DIRECT OR INDIRECT COST. UMI PERFORMANCE INCORPORATED IS NOT RESPONSIBLE FOR ANY CONSEQUENTIAL DAMAGE, EXPENSE OR INJURY ARISING FROM THE USE, MISUSE OR IMPROPER INSTALLATION OF ANY PRODUCT MANUFACTURED AND/OR SOLD BY UMI PERFORMANCE INCORPORATED.

Item # 3046

78-88 GM G-Body C5 Brake Conversion

UMI Performance Inc.

Made in Pennsylvania, USA

