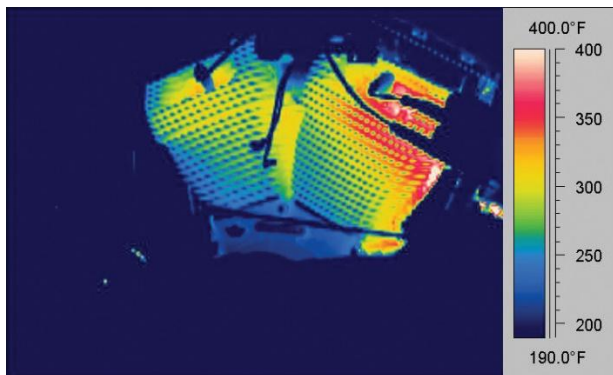


## Max-Cycle<sup>®</sup>

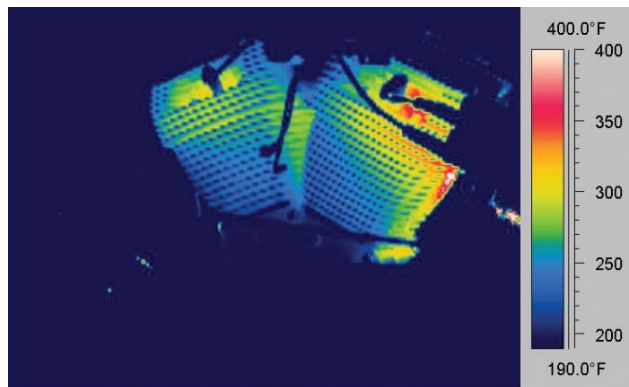
### HIGH-PERFORMANCE MOTORCYCLE & ATV ENGINE OIL

Royal Purple<sup>®</sup> Max-Cycle<sup>®</sup> is specifically formulated to exceed the demands of highly stressed engines and transmissions. It is recommended for use in both air-cooled and liquid-cooled 4-cycle engines. Formulated with select synthetic base oils and Royal Purple's proprietary Synerlec<sup>®</sup> additive technology, Max-Cycle provides improved film strength when compared to the leading synthetic and mineral oil. Its shear stability and oxidation resistance promote greater performance and protection.

Royal Purple's advanced and proprietary Synerlec technology provides an exceptional film strength increase compared to other engine oils. The protection provided by Synerlec dramatically reduces metal-to-metal contact and frictional wear, helping to reduce engine operating temperatures and restore lost engine performance. Synerlec also provides outstanding oxidation resistance to safely extend oil drains, and an ionic attraction to metal components providing unmatched cold-start wear protection.



Thermal image of engine using OEM branded engine oil.



Thermal image of engine after change to Max-Cycle SAE 20W-50.

### PERFORMANCE ADVANTAGES

- GREATEST WEAR PROTECTION – Protection against engine wear that is unmatched by any commercially available engine oil
- SUPERIOR HIGH-TEMP. PERFORMANCE - Premium synthetic base oils and Synerlec technology resist thermal degradation
- LOWER CYLINDER TEMPERATURES – Reduced metal-to-metal contact and friction resulting in observed 25°F to 44°F temperature reduction measured at the cylinder

## Typical Physical Properties

Property	Test Method	10W-40	20W-50
Viscosity @ 40°C, cSt	ASTM D445	92.1	165
Viscosity @ 100°C, cSt	ASTM D445	14.0	20.1
Viscosity Index	ASTM D2270	155	141
Cold Crank Simulator, cP	ASTM D5293	5,341 @-25°C	4,491 @-15°C
HTHS, @150°C, cP	ASTM D5481	3.9	5.1
Flash Point, °C (°F)	ASTM D92	204 (400)	213 (415)
Pour Point, °C (°F)	ASTM D97	-49 (-56)	-26 (-15)
TBN, mg KOH	ASTM D2896	9.6	9.5

### Distributed By:

Calumet Branded Products, LLC  
1060 N Capitol Ave  
Suite 6-401  
Indianapolis, IN 46204  
Technical Services: 888-382-6300  
www.royalpurple.com

To the best of our knowledge, the information contained herein is accurate, but is given without warranty or guarantee. We assume no liability whatsoever for the accuracy or completeness of the information contained herein. Final determination of the suitability of any information or material for the use contemplated, the name in use and whether there is any infringement of patents is the sole responsibility of the user.

All trademarks are owned by one or more affiliates within the Calumet, Inc. organization, unless otherwise specified.

The color purple is a registered trademark of Calumet Branded Products, LLC.

© 2025 Calumet Inc. All Rights Reserved.

9/17/2025