

# INSTALLATION GUIDE

Performance Aluminum Radiator, Fits 2012 Honda Civic SI  
SKU: MMRAD-CIV-12SI

## TABLE OF CONTENTS

1. RESOURCES & CONTACT INFO
2. IMPORTANT SAFETY INFORMATION  
INSTALL TIME & DIFFICULTY  
REQUIRED TOOLS
4. DISPOSAL & WARRANTY INFORMATION

## RESOURCES & CONTACT



**CALL 1.877.466.4744**

CUSTOMER SERVICE HOURS: MON-FRI 9:00AM-7:00PM EST



**@MISHIMOTO**



**@GOMISHIMOTO**



**MISHIMOTO**



**@MISHIMOTO**



**ENGINEERING BLOG**

[WWW.MISHIMOTO.COM/ENGINEERING](http://WWW.MISHIMOTO.COM/ENGINEERING)

## IMPORTANT SAFETY INFORMATION

- › Mishimoto recommends you use safety glasses and protective gloves during the installation of our products
- › Raise vehicle only on jack stands or on a vehicle lift
- › Allow vehicle to cool completely prior to attempting installation
- › Do not run the engine or drive the vehicle while overheating; serious damage can occur
- › Please dispose of any liquids properly
- › Mishimoto is not responsible for any vehicle damage or personal injury due to installation errors, misuse, or removal of Mishimoto products
- › If you need any assistance while installing our products, reach out to our Customer Service Team at 1.877.466.4744

## PARTS INCLUDED

- (1) PERFORMANCE RADIATOR
- (4) M6 FLANGED BOLTS

## REQUIRED TOOLS

- 10MM SOCKET
- 13MM SOCKET
- 16MM SOCKET
- 17MM DEEP SOCKET OR WRENCH
- 19MM DEEP SOCKET OR WRENCH
- 5MM ALLEN KEY
- PLIERS
- PLASTIC TRIM PANEL REMOVAL TOOLS
- 1/4" OR 3/8" DRIVE RATCHET AND EXTENSIONS

**INSTALL TIME: 2 HOURS**

**INSTALL DIFFICULTY:** 

## INSTALLATION INSTRUCTIONS

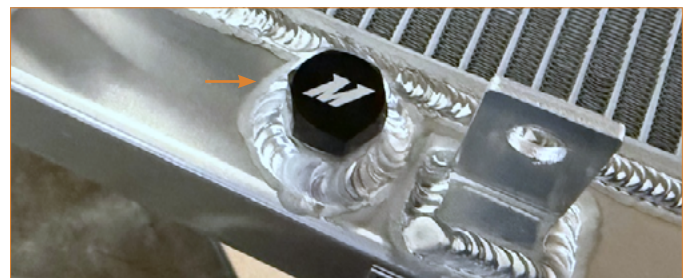
1. Remove the splash shield and drain coolant into a clean bucket.
2. Remove factory radiator assembly.
3. Ensure that the factory quick-disconnect fitting has been removed from the lower radiator hose.
4. Remove both fan shrouds from the factory radiator.



5. Remove the rubber grommets and the temperature sensor from the factory radiator.

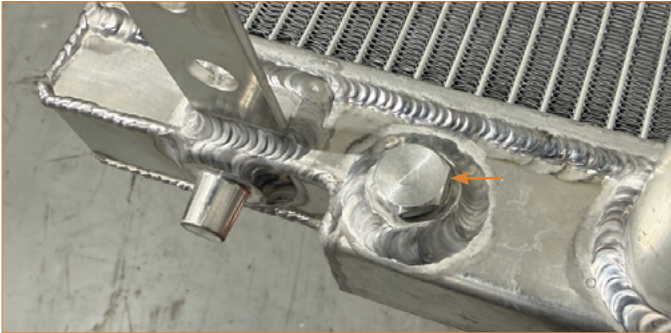


6. Ensure that the drain plug on the Mishimoto radiator is tight.

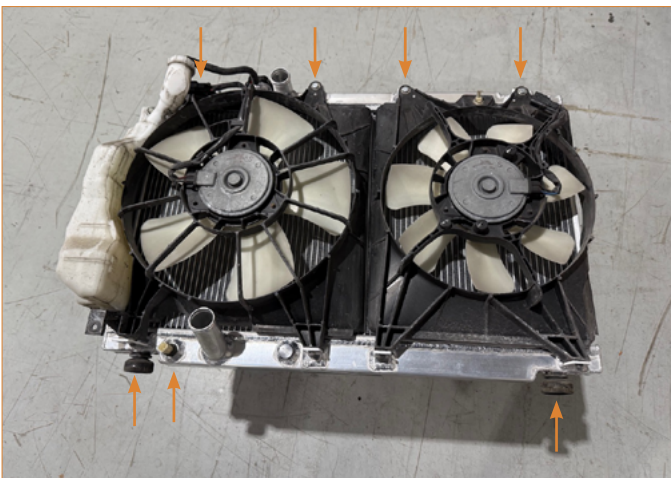


Continued on next page

**7.** Remove the plug from the Mishimoto performance radiator.



**8.** Install the grommets, temperature sensor, and fan shrouds onto the Mishimoto performance radiator using the supplied (4) M6 flanged bolts instead of the factory hardware.



**9.** Install the Mishimoto performance radiator into the vehicle. The factory lower hose quick-disconnect fitting is not utilized with the Mishimoto performance radiator.



**10.** Reinstall any components removed from the vehicle.

**11.** Fill the cooling system. Start the vehicle and allow it to reach operating temperature, check for leaks, and add additional coolant as necessary.

**Congratulations! You have completed the installation.**

Continued on next page

## DISPOSAL INSTRUCTIONS

- › Do not dispose of any product as unsorted municipal waste. Use separate collection facilities. Contact your local authority for information regarding the collection systems available.
- › Never improperly dispose of any coolant, oil, or other chemicals

## WARRANTY INFORMATION



- › All claims must be accompanied with a picture of the Mishimoto product showing the issue for which the claim is being submitted.
- › Mishimoto asks that the customer inspect their purchased item for any damage immediately upon arrival.
- › Any product deemed dead on arrival (DOA) must be claimed within 14 business days of delivery. Claims outside of this time frame will not be covered under the Mishimoto Lifetime Warranty.
- › This warranty does not include payment and/or reimbursement of the cost of labor in connection with the removal of any product returned pursuant to the warranty policy or in connection with the installation of any replacement items provided under the warranty policy.
- › Mishimoto has the right to refuse a claim at any time.

- › When Mishimoto accepts a claim, Mishimoto retains full discretion to choose if it will: (i) repair or replace purchaser's original Mishimoto product; (ii) replace purchaser's original Mishimoto product with the most current available model; or (iii) provide the purchaser with a gift card redeemable on **Mishimoto.com** in the amount of the original purchase price of the original Mishimoto product. The provision of a replacement of a Mishimoto product is subject to availability and Mishimoto retains the right to substitute any warranty claim item with a comparable item or credit at any time.
- › If Mishimoto determines that it will provide a replacement item in connection with a claim under this warranty policy, and such item is out of stock, Mishimoto will place the customer on backorder and ship the replacement product to the purchaser once it becomes available.
- › Mishimoto is not liable for incorrect shipments in connection with a claim if a claim form is completed incorrectly, or if a model number is not included in a claim.
- › If you have a vehicle equipped with an automatic transmission, please make sure to specify this within the text box on the claim form. Mishimoto is not responsible for incorrect replacement shipments if transmission type is not indicated.



**WARNING**  
Cancer and  
Reproductive Harm  
[www.P65Warnings.ca.gov](http://www.P65Warnings.ca.gov)

- › This product can expose you to chemicals which are known to the state of California to cause cancer. For more information visit:  
[www.p65warnings.ca.gov](http://www.p65warnings.ca.gov)