

2014-2018 Silverado Blade LED Extrusion Kit

For Trucks Without Step Rails

Congratulations on your purchase of a high quality PUTCO product. Should you need any application or technical assistance, feel free to call us at: 1-800-247-3974

Monday-Friday 8:00 a.m. - 5:00 p.m. (Central Standard Time)

Contact your PUTCO dealer for other quality accessories.

Please read all instructions before installation and to check to see that all parts are included.

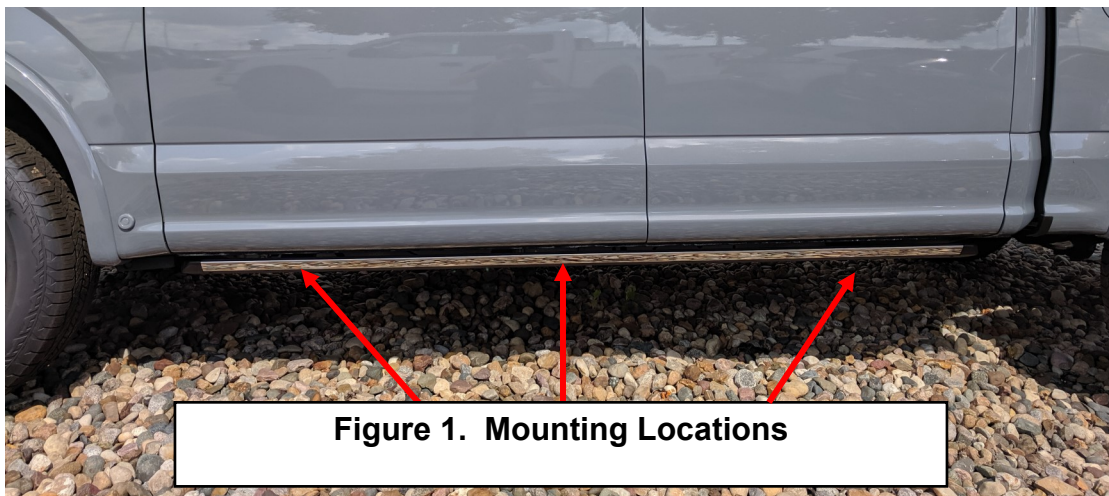
KIT CONTENTS:	
Description	Qty.
Blade LED Lightbar in Powdercoated Extrusion	2
Powdercoated Mounting Brackets	6
10-24 1/2" Stainless Steel Bolt	6
10-24 Stainless Steel Nylon Locknut	6
1/4"-20 0.5" Stainless Steel Bolt	6
1/4"-20 Stainless Steel Nylock Nut	6
1/4" Stainless Steel Washer	6
Rocker Switch	1
Lightbar Remote	1

Tools Needed:

- Socket set or wrenches
- 3/8" socket
- 5mm Allen wrench
- Wire strippers
- Wire crimpers

Installation Instructions:

The brackets are designed to utilize factory rocker panel tabs to mount the extrusion. There are multiple holes in the tabs located underneath the truck. These locations are shown in **Figure 1**.



1. To attach the brackets, push the 1/4"-20 button head bolt up through the hole in the bracket and then through the holes in the tabs of the rockers. Use the washer and the 1/4"20 nylock nut to tighten the bracket to the vehicle. **Figure 2a & 2b.**

Note: While not necessary, a #10 self tapping screw can be added as shown in figure 2b to add to the rigidity of the bracket.

2. Slide the three 10-24 1/2" bolts in extrusion into position with the brackets on the vehicle, **Figure 3.**
3. Secure the extrusion to brackets with locknuts using a 3/8" socket, as shown in **Figure 4.**



Figure 2a. Bracket mounting.

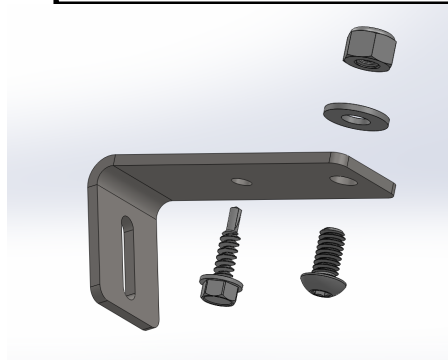


Figure 2b. Exploded bracket assembly.

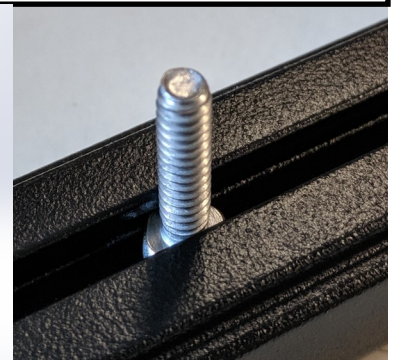


Figure 3. Mounting bolt in extrusion.



Figure 4. Extrusion mounting.

4. Route the black driver box and wires to a location safe from road debris, moving parts, and heat. Zip-tie into place.

Wiring Instructions:

Wire Colors and Function	
Wire	Function
Red	12 volt +
Black	Ground
Green	Strobe
White	Reverse or white override

1. Wire the red wire to a 12 volt + source, and the black wire to chassis ground. The light bar will not illuminate until 12V is applied to either the green or white wire.
2. Take a switched positive 12 volt power and tie it into the green wire. When 12 volt positive is applied to the green wire, the Blade will strobe. If using the provided switch, connect the gold terminal to vehicle ground, the middle terminal to green wire, and the final terminal to a constant 12 volt source (**Figure 5**).
3. Take a switched positive 12 volt power and tie it into the white wire. If using the provided switch, connect the gold terminal to vehicle ground, the middle terminal to white wire, and the final terminal to a constant 12 volt source (**Figure 5**).

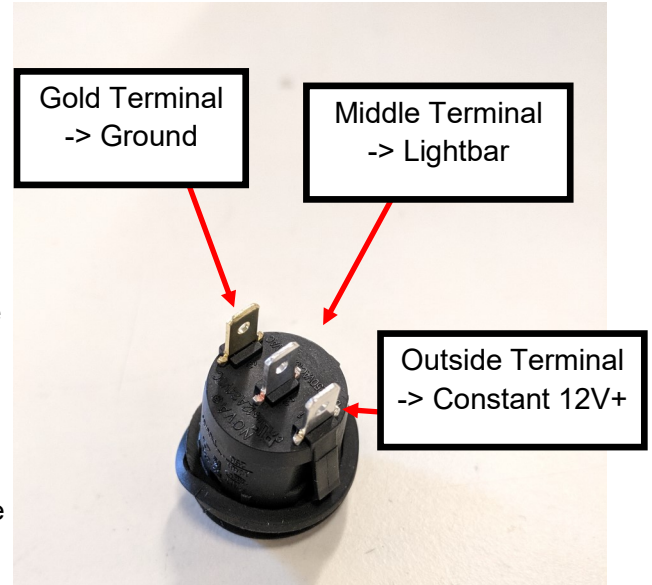


Figure 5. Switch terminal identification

Programming Instructions:

1. Remove the included remote from its packaging.
2. Turn on the light bar and switch on the strobe function. The strobe pattern may be changed **only when** the strobing function is active.
3. The remote has four buttons: Strobing Pattern (P) UP/DOWN, and Strobing Speed (S) UP/DOWN. Press the P UP and P DOWN to cycle through the functions until the desired pattern is found. Press the S UP and S DOWN to adjust the speed (frequency) of the pattern.
4. Once the desired pattern and speed is set, the remote is no longer need for normal operation. The remote can be stored and would only be needed to change the pattern.

Tip: When programming multiple lightbars, only activate one lightbar's strobe function at a time to prevent accidental switching of desired patterns on the other lightbars. Repeat this process until all lightbars are set to desired pattern and frequency.

NOTE: This product is intended for commercial use only. Putco is not responsible or liable for any legal issues resulting in the use of this product beyond its commercial intent.