



---

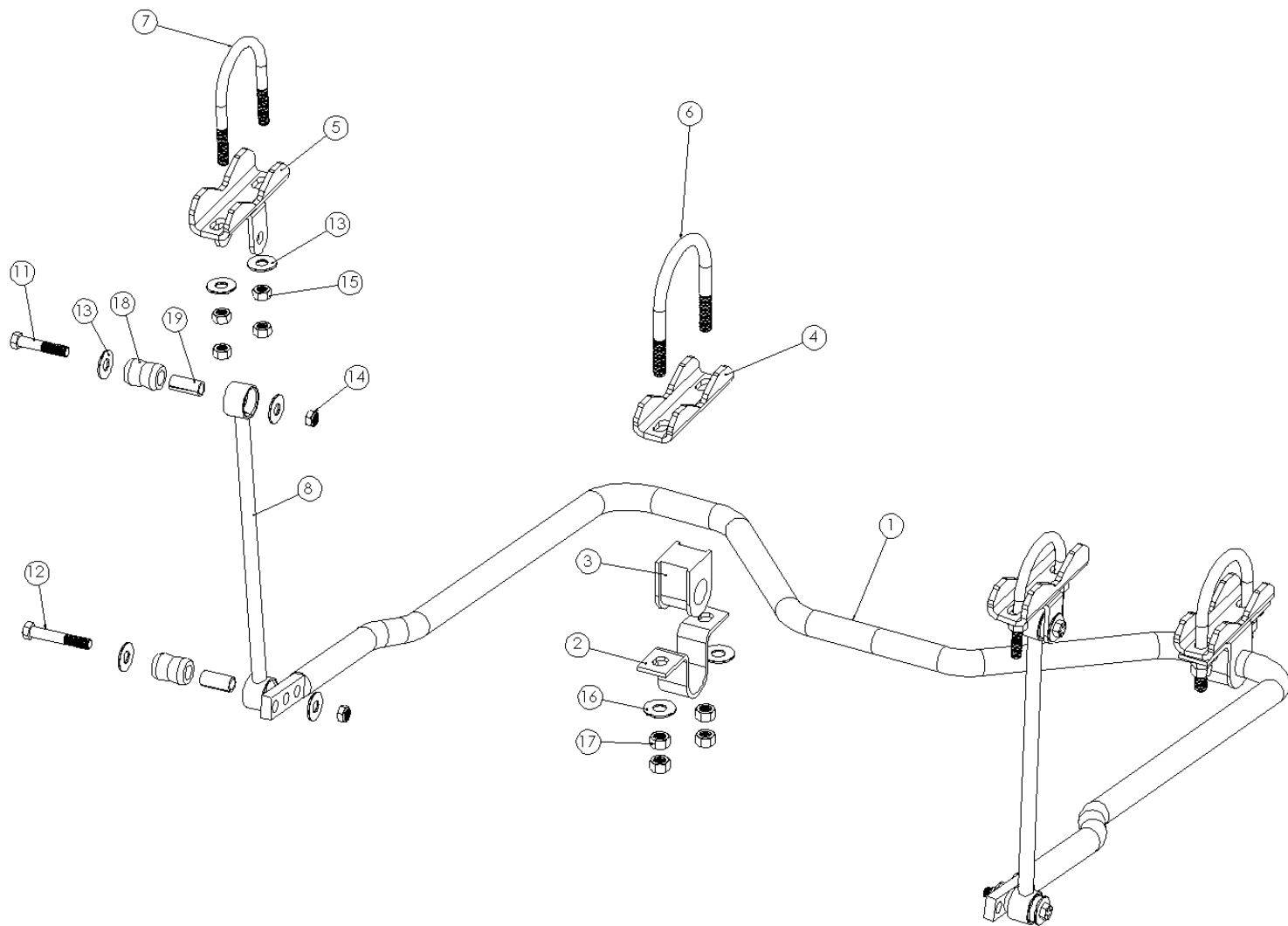
# INSTALLATION INSTRUCTIONS

---

## Rear Stabilizer Bar

8917





Number	Part Name	Quantity	Number	Part Name	Quantity
1	Sway Bar	1	11	7/16 x 2 1/4" Grade 8 Bolt	2
2	U-Plates	2	12	7/16 x 2 3/4" Grade 8 Bolt	2
3	D-Bushings	2	13	7/16" Washer	12
4	Axle Saddle Brackets	2	14	7/16" Stover Lock Nut	4
5	Offset Saddle Brackets w/ Clevis	2	15	7/16" Hex Nut	8
6	1/2 x 3 5/8 x 5" U-Bolts	2	16	1/2" Washer	4
7	7/16 x 3 1/4 x 4 1/2" U-Bolts	2	17	1/2" Hex Nut	8
8	Endlinks 14.5"	2	18	Hourglass Bushing	4
9	Instruction Sheet	1	19	Hourglass Bushing Sleeve	4
10	Warranty Form	1	20	Bushing Lube	2



Size	Recommended Torque											
	Grade 2		Grade 5		Grade 8		18-8 S/S		Bronze		Brass	
	Coars e	Fine	Coars e	Fine	Coars e	Fine	Coars e	Fine	Coars e	Fine	Coars e	Fine
#4*	-	-	-	-	-	-	5.2	-	4.8	-	4.3	-
#6*	-	-	-	-	-	-	9.6	-	8.9	-	7.9	-
#8*	-	-	-	-	-	-	19.8	-	18.4	-	16.2	-
#10*	-	-	-	-	-	-	22.8	31.7	21.2	29.3	18.6	25.9
1/4"	4	4.7	6.3	7.3	9	10	6.3	7.8	5.7	7.3	5.1	6.4
5/16"	8	9	13	14	18	20	11	11.8	10.3	10.9	8.9	9.7
3/8"	15	17	23	26	33	37	20	22	18	20	16	18
7/16"	24	27	37	41	52	58	31	33	29	31	26	27
1/2"	37	41	57	64	80	90	43	45	40	42	35	37
9/16"	53	59	82	91	115	129	57	63	53	58	47	51
5/8"	73	83	112	128	159	180	93	104	86	96	76	85
3/4"	125	138	200	223	282	315	128	124	104	102	118	115
7/8"	129	144	322	355	454	501	194	193	178	178	159	158
1"†	188	210	483	541	682	764	287	289	265	240	235	212

\* Sizes from #4 to #10 are in lb-in.

Sizes from 1/4" up are in lb-ft.

† Fine thread figures are for 1"-14.

Grade 2, 5, and 8 values are for slightly lubricated bolts.

\*\*\*Socket head cap screws are **not grade designated** as are hex head cap screws. A standard inch series socket head cap screw is 20% stronger than a Grade 8 hex head cap screw and 50% stronger than a Grade 5 hex cap screw.

## Standard Tools:



Ratchet



Socket



Deep Socket

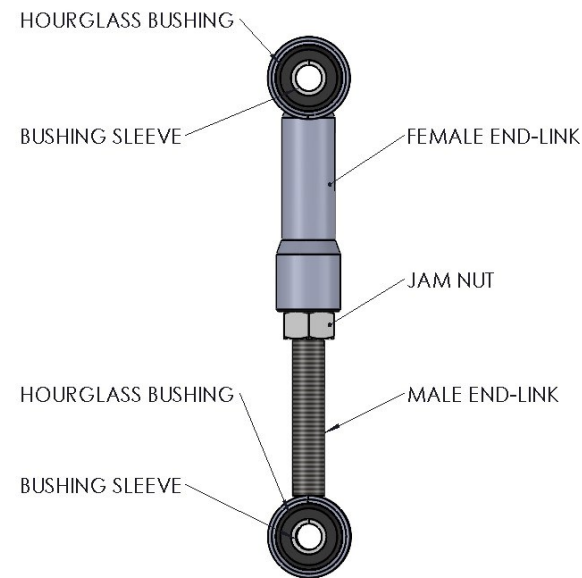


Torque Wrench

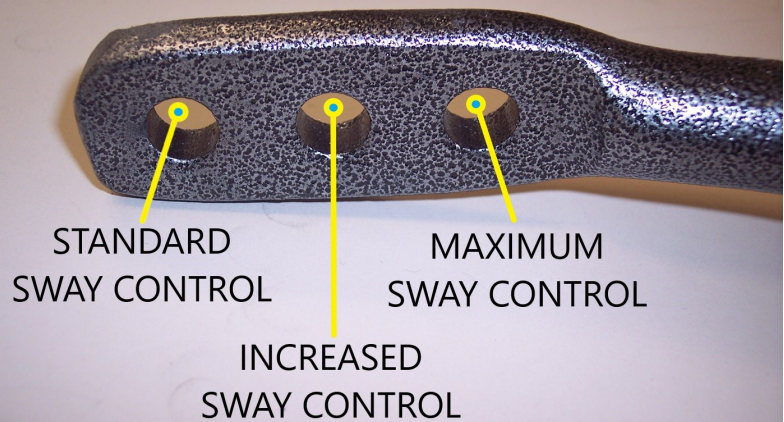


Wrench

Fastener	Wrench/ Socket Size
7/16" Bolt	5/8
7/16" Stover Locknut	5/8
7/16" Hex Nut	5/8
1/2" Hex Nut	3/4



## ADJUSTABLE SWAY CONTROL



## Pro Tip: End-Link Bushing Installation



When installing the hour glass end-link bushing, remember to use lube. This will not only aid in ease of the hour glass bushing installation, but also reduce squeaking of the suspension.

Place the hourglass bushing and the end-link in a bench vice as shown and compress.



Next, take the bushing sleeve and lube the outside of it. Spread the lube around evenly.

Place the end-link with the hourglass bushing already installed and the bushing sleeve in a bench vice as shown and compress.

When done, the final results will look as pictured. Repeat these steps for all end-links.

## General Notes:



These instructions are meant to be a general guide for installing Hellwig Products Co. sway bars. Hellwig Products Co. Inc. assumes no liability for the actual installation process. Consumers should apply common automotive safety practices when working on any vehicles. DO NOT put yourself in a position where if the vehicle should move unexpectedly, you may be seriously hurt.

Hellwig suspension products are designed for ease of installation with standard tools. However, access to a jack, jack stands, and work lights may provide added assistance during your installation. As described in Hellwig installation instructions, many fasteners require proper tension or torque. Use of a torque wrench will verify proper torque for this requirement.

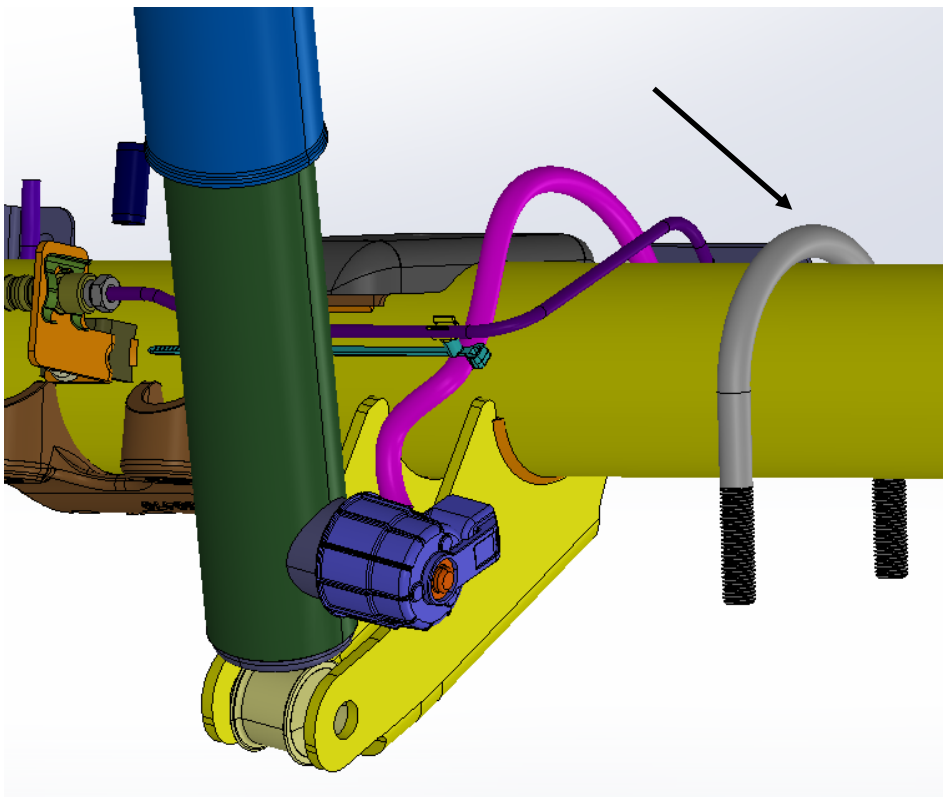
- To ease installation and to properly adjust bar, the weight of the vehicle must be on the suspension, as if driving down the road. Do not Raise Vehicle by frame.
- Before installation, set the E-brake and place wheel chucks under the tires in the appropriate locations to prevent the vehicle from rolling away.
- If you're not using a 4 post lift when raising the vehicle off the floor to install the anti-sway bar, always fully support the vehicle with jack stands. Ensure that the jack stands are securely positioned, and are rated at or above the weight of the vehicle.
- 2 post lifts are not recommended as the weight of the vehicle must be on the suspension.
- Don't forget to lube all bushings and end links.
- Always use impact grade sockets with air ratches or impact drivers.
- Holes Are Producing an Interference – apply torque to the nut.
- Nut and Bolt Head are Different Diameters or Shapes – apply torque to the side with the smaller bearing face. This also applies when the hole diameters are different.
- When Clamping Two Different Materials Together – It is always better to apply torque on the component that is against the material with a lower frictional coefficient.
- Long Bolts Are Being Used – When torque is applied to the head of a very long bolt, you may see the effects of torsional wind-up. Applying torque to the nut in this situation will help to avoid that issue.
- There will be many instances where you can apply torque to either the nut or the bolt head. But if one of the above situations applies, remember to follow the guidelines for a better fit and more durable installation



## Step 1: Lubricate Bushings

Apply ample amount of lubricant to the inside of each D-Bushing. Spread it evenly throughout the entire inside of the D-Bushing.

Install the D-Bushings on the bar in the approximate location of mounting. (usually about half a packet of lube per D-Bushing is sufficient).



## Step 2: Install U-bolt on Axle

Place the long 1/2" diameter U-bolts on the axle (Item 6) inside of the shock mounts. **Ensure that the U-bolts are under any brake lines, wires, or hoses on the axle to avoid pinching or crushing when tightening.** The threads should be pointing downwards.



### Step 3: Install U-plates and saddle bracket



Attach your new Hellwig sway bar by taking the Hellwig provided U-Plates and slide them over the provided lubricated D-Bushings. Raise the bar up to the axle saddle brackets and mount the sway bar to the U-Bolts. Install a 1/2" washer first, followed by the 1/2" hex nuts. Utilize a deep socket and ratchet.

- Tighten but do not torque, allowing the saddle bracket and U-Bolt to rotate around the axle tube, if necessary.

### Step 4:

Rotate the bar on the axle tubes and adjust side to side so the bar is centered as possible and has clearance around the differential housing,





## Step 5: Assemble End-Links

Take the hour glass bushings and gently lube the outside of the bushing. This will also assist in ease of installation. You can reference the end-link bushing installation pro tip guide on how to install them on page 5.



## Step 6: Install U-bolts and Saddle Bracket

Place the short set of 7/16" diameter U-bolts (Item 7) around the tubular cross member above the spare tire just inside the frame rails with the legs pointing down. Then, place the saddle bracket with the welded U-shaped clevis (Item 5) onto the cross member and U-bolt. Ensure that the longer side is on the outside, away from the spare tire. Attach with 7/16" washer and 7/16" Hex Nuts. Do not fully tighten.



### Step 7: Attach End-Link to upper mounting point

Attach the end-links into the upper clevis bracket (Item 5) with the 7/16" X 2 1/4" bolts, 7/16" washers, and 7/16" stover locknuts and let hang. **Leave all mounting hardware loose at this point to allow for adjustment later.**



### Step 8: Attach End-Link to Sway Bar

Raise the bar up so the arms are as close to level as possible and attach the lower end-links to the desired hole in the sway bar using the following hardware

- 7/16 x 2-3/4" bolt
- 7/16" washers
- 7/16" stover locknut.

Tighten but do not torque yet

## Step 9:

Rotate the U-bolts on the axle and upper tubular cross member to align them so it is as level with the frame as possible and the end-links are straight as possible. **Be sure that the axle and cross member U-bolts are under any brake lines, wires, or hoses to avoid pinching or crushing when tightening.**



## Step 10:

With the bar properly aligned, verify that all vehicle components have proper amount of clearance, and nothing is going to be pinched or crushed when everything is tightened. Torque the U-bolts to 30-35 ft-lb and the bolts to 52-58 ft-lb.. **Ensure the U-bolts have double nuts.**

## Step 11:

Bounce the vehicle, check for clearance on all undercarriage components: exhaust, wires, shocks, brake, and fuel lines. Test drive the vehicle and recheck for clearance and installation alignment.

## Step 12:

The sway bar arms have multiple mounting holes. Mounting the sway bar on the outer hole is the nominal position. For firmer settings, use the inner holes. We recommend starting with the outer mounting hole until you are accustomed to the vehicles new handling characteristics. Select the mounting point that best suits your driving style. After one week of driving, recheck the installation. Recheck on a regular basis thereafter.



1. **Fasteners:**

All Hellwig supplied fasteners must be utilized and installed in accordance with the installation instructions and apply torque to the specifications as defined. It is recommended to use Anti-Seize (not supplied) on all threads upon installation.

2. **Modification:**

Do not attempt to modify the vehicle or the Hellwig product you are installing. If a problem is encountered, stop and call Hellwig Products (1-800-367-5480) for support. Hellwig Products Company will not be responsible for any damage or injury resulting from any modification or alteration.

Do not use this document for custom fabrication, as it may not show all parts or structural components.

2. **Drilling:**

Most Hellwig products do not require drilling and or tapping for installation. If drilling is defined as required, use caution when drilling a vehicle. Failure to review an area to be drilled, may result in personal injury and/or injury to other as well as vehicle damage.

3. **Eye Protection:**

Always wear safety glasses or goggles during the installation process to avoid personal injury.

4. **Maximum Towing/Carrying Capacity:**

User should never exceed the vehicle manufacture's maximum tow and weight rating. Failure to follow these guidelines will void the Hellwig warranty and may result in personal injury and/or injury to others as well as vehicle damage.

5. **For California Residents Only—Prop 65 Warning:**

Some products may contain chemicals such as DEHP, which can cause cancer, birth defects or other reproductive harm. For more info go to [www.p65warning.ca.gov](http://www.p65warning.ca.gov)

6. **Checks after Install:**

After installing your new Hellwig sway bar it is recommended to bounce the vehicle, check for clearances, and if all looks good test drive the vehicle. Check the fasteners regularly thereafter. Ensure no damage is being done to the sway bar or your vehicle.