

GT
MOMENTUM

advanced FLOW engineering

Momentum GT Air Intake System

Instruction Manual P/N: 50-70134D / 50-70134R

Make: TOYOTA
Make: TOYOTA

Model: HILUX
Model: FORTUNER

Year: 2015-2026
Year: 2015-2026

Engine: V6-4.0L
Engine: V6-4.0L



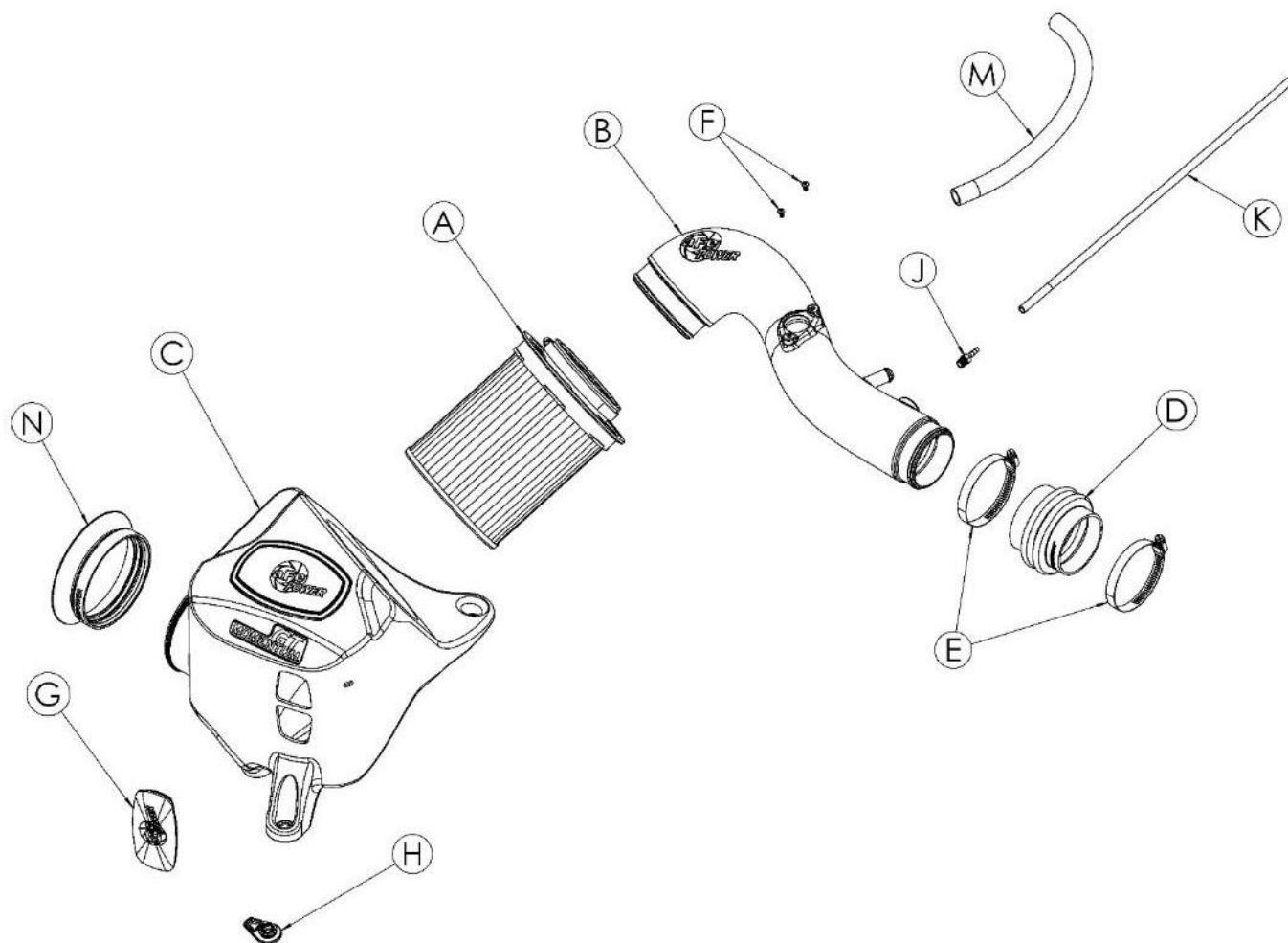
- Please read the entire instruction manual before proceeding.
- Ensure all components listed are present.
- If you are missing any of the components, call customer support at 951-493-7185.
- Ensure you have all necessary tools before proceeding.
- Do not attempt to work on your vehicle when the engine is hot.
- Retain factory parts for future use.

Label	Qty.	Description	Part Number
A	1	Air Filter, P5R (For 50-70134R Only)	24-91153
A	1	Air Filter, PDS (For 50-70134D Only)	21-91153
B	1	Tube With MAF Sensor Pad	05-5070134B1
C	1	Housing With Clear Sight Window	05-5070134B2
D	1	Coupling, Silicone Bellows (3" x 3-1/8")ID x 3"L	05-01400
E	2	Clamp, 048 (2-9/16" - 3-1/2")	03-50007
F	2	Screw, Torx: M4 x .7 x 8mm	03-50491
G	1	Plug, Silicone : Auxiliary Inlet	05-01429
H	1	Plug, Silicone : Drain hole	03-50766
J	1	Fitting, Brass: 3/16"ID x 1/8npt	03-50191
K	1	Hose 5/32" ID (20" Length)	05-00122
M	1	Hose 5/8" ID (20" Length)	05-00069
N	1	Inlet Seal, Silicone	05-01544

Installation will require the following tools: T20 Torx bit, Pliers, Pry tool, 8mm socket or nut driver, 10mm socket or nut driver, ratchet and extension, adjustable wrench or an 11mm wrench.

Warranty Information available at <https://afepower.com/contact#warranty>

Emissions Disclaimer: This product does not require a CARB EO# (Vehicle does not exist in U.S.).





Refer to Figure A for Step 1

Step 1: Remove the engine cover if your vehicle is equipped with one.


Figure B

Refer to Figure B for Steps 2-3

Step 2: Disconnect the small hose connected to the resonance chamber on the tube. Disconnect this hose from the engine side too. This hose will be replaced with a longer provided hose.

Step 3: Using a plyer, pry open the clamp on the bigger hose and disconnect it from the resonance chamber. This hose can be replaced with the provided hose or re-used.

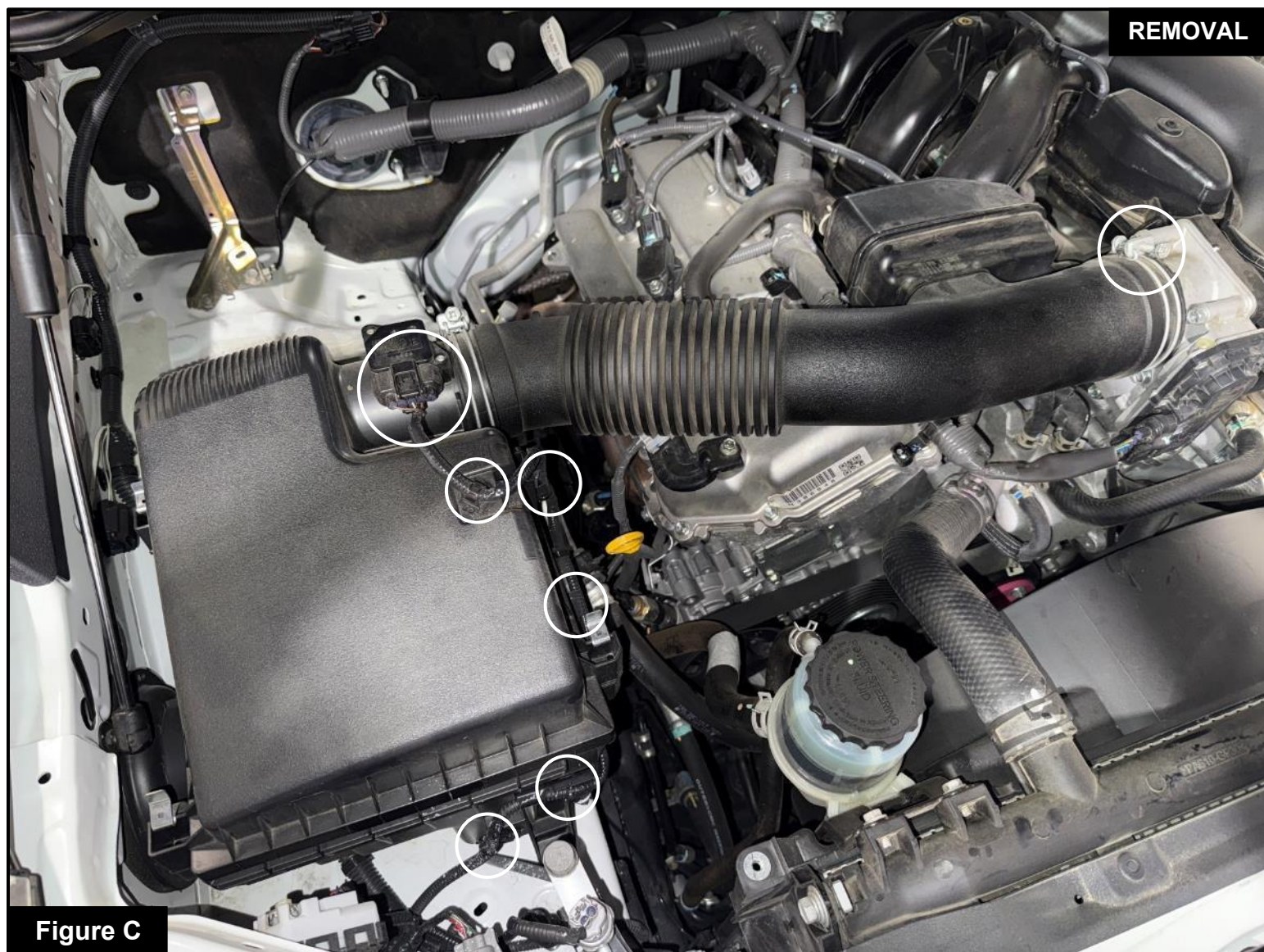


Figure C

Refer to Figure C for Steps 4-5

Step 4: Disconnect the harness from the Mass Air Flow (MAF) sensor by pressing on the tab and pulling on the connector.

Step 5: Unclip the harness from the factory airbox using a pry tool.

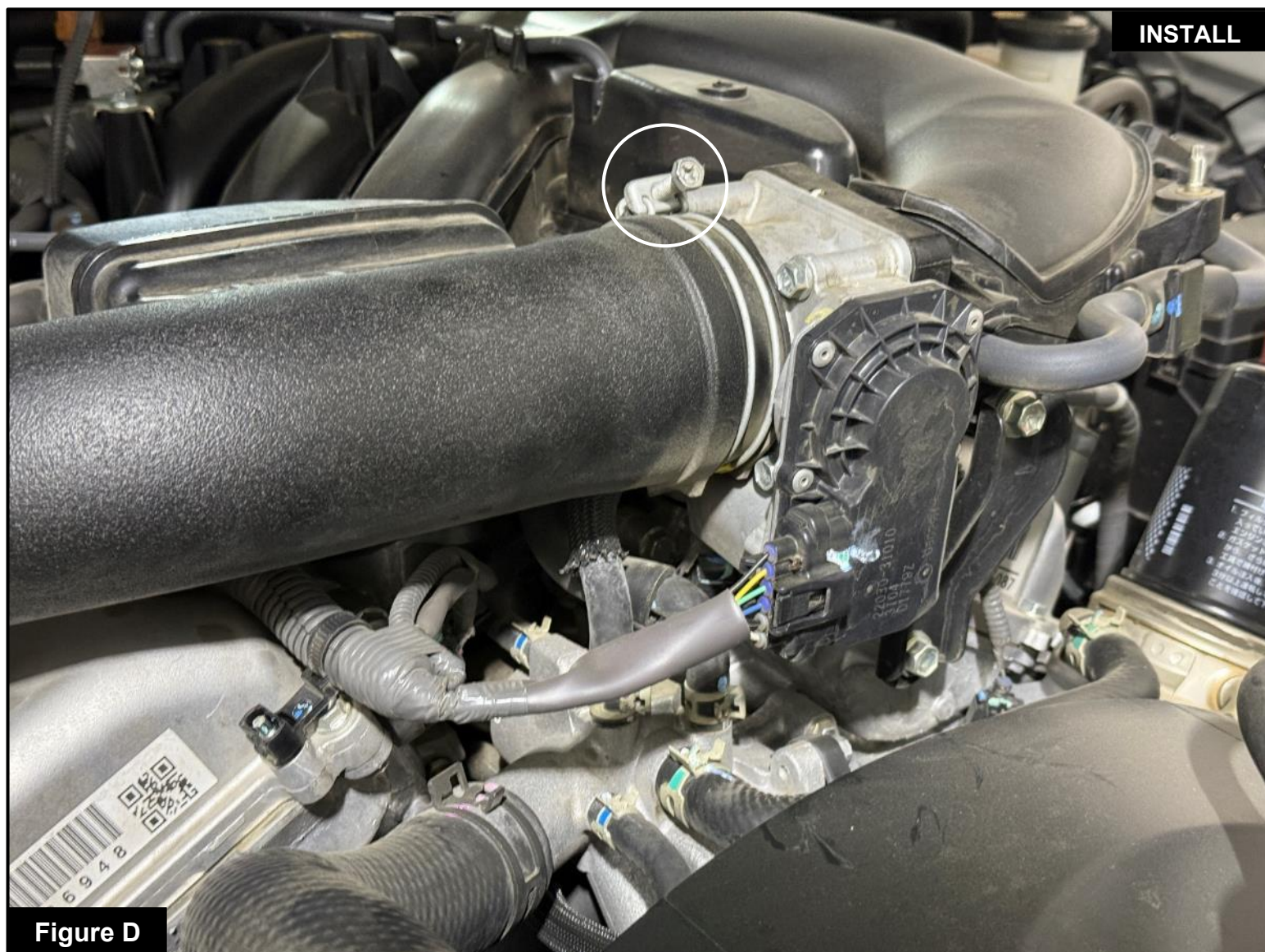


Figure D

Refer to Figure D for Step 6

Step 6: Using a 10mm socket or nut driver, loosen the clamp between the factory tube and the throttle body.

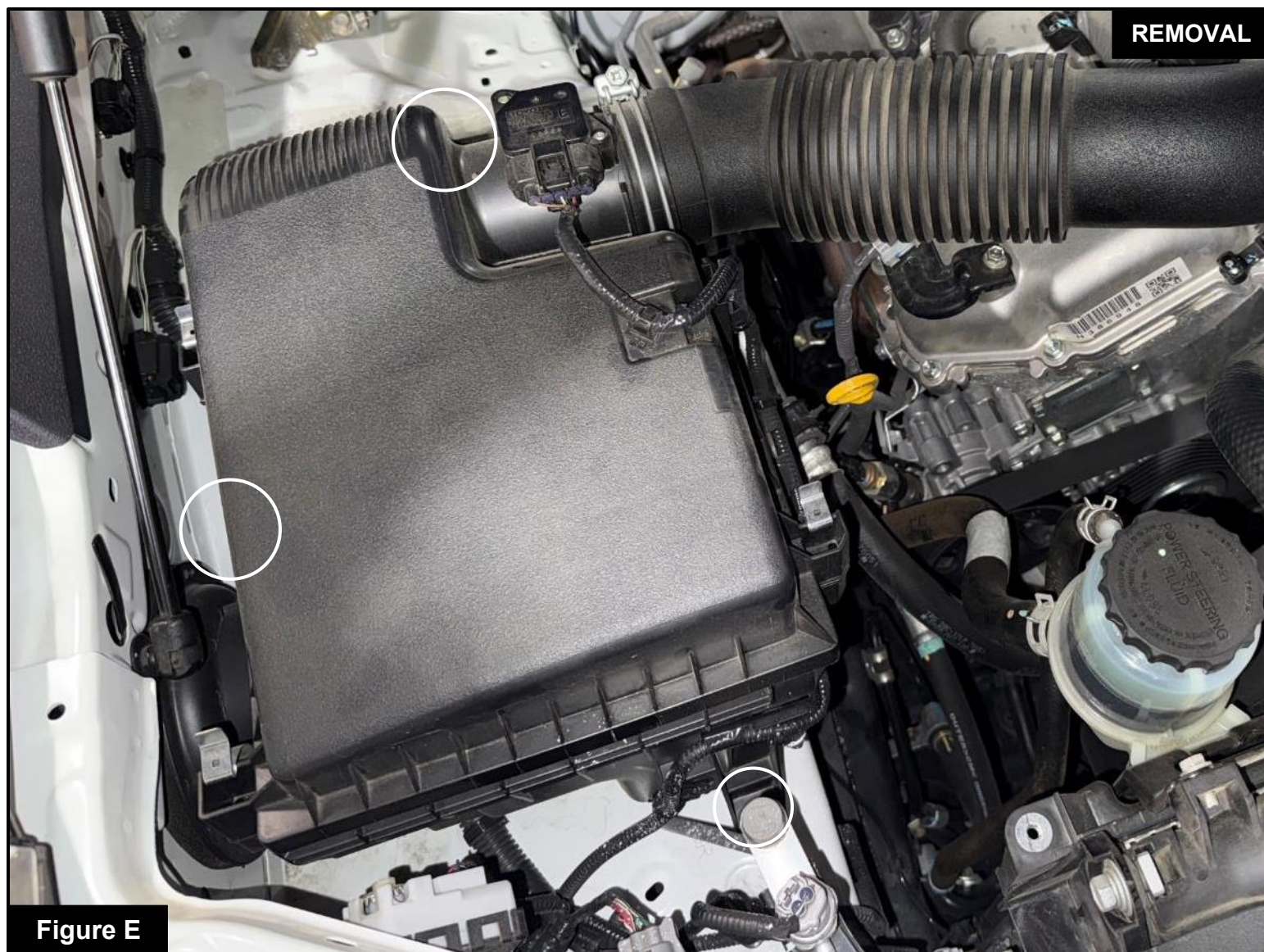


Figure E

Refer to Figure E for Steps 7-8

Step 7: Using a 10mm socket, extension and ratchet, remove the three bolts securing the factory airbox.

Those bolts will be reused to secure the aFe POWER housing.

Step 8: Pull the full factory airbox and tube assembly out of the vehicle.


Figure F

Refer to Figure F for Steps 9-10

Step 9: Transfer the three factory grommets and sleeves from the factory airbox to the aFe POWER housing.

Step 10: Install the aFe POWER plug on the drain hole. This plug can be accessed and removed while the housing is installed on the vehicle.

**Figure G****Refer to Figure G for Steps 11-12**

Step 11: Install the inlet seal onto the air inlet of the aFe POWER housing.

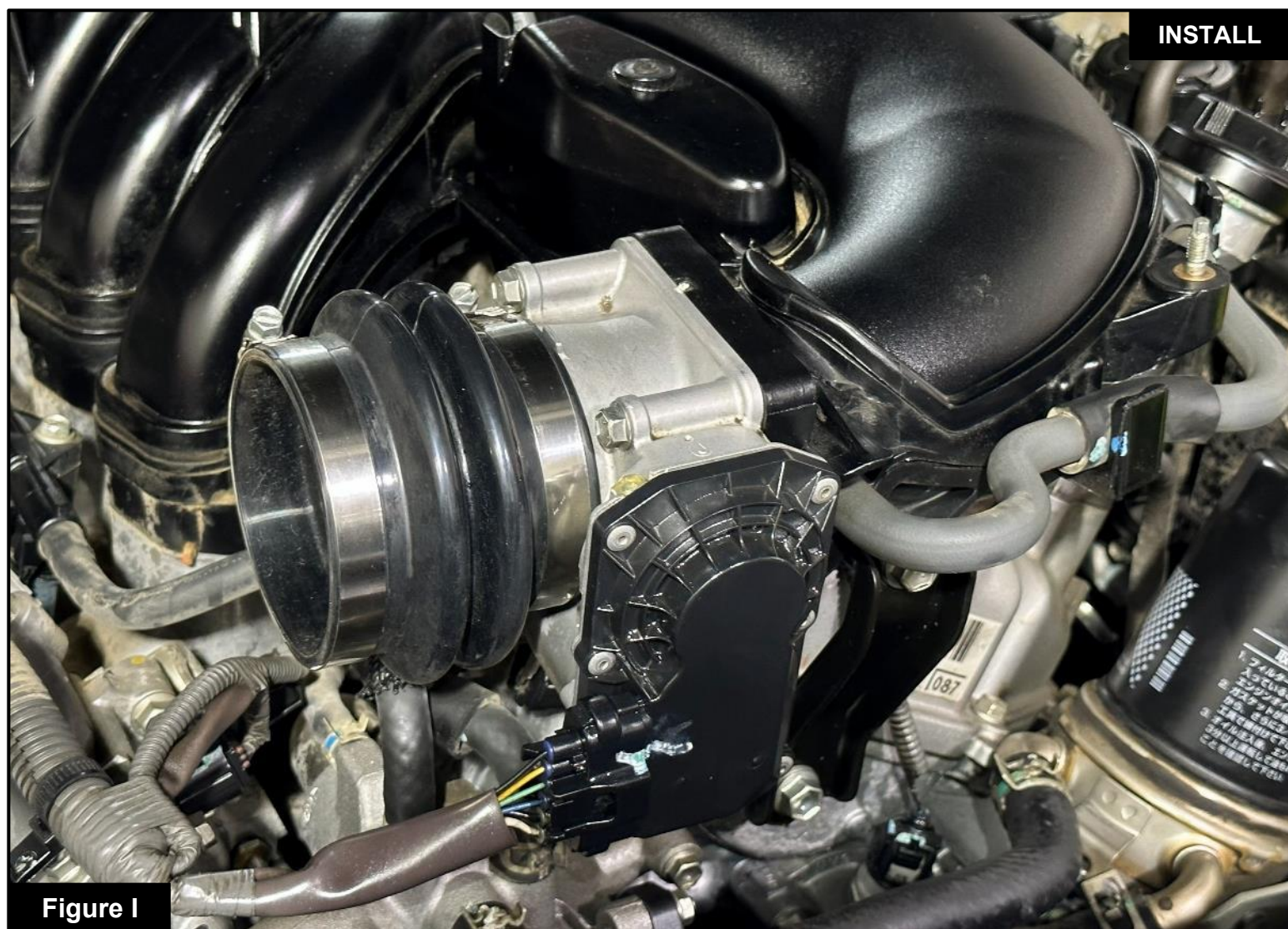
Step 12: Install the aFe POWER air filter into the aFe Power housing by firmly pushing it into the housing until the air filter tabs lock it into place. Install on the clamp on the filter, but do not tighten at this time.



Figure H

Refer to Figure H for Step 13

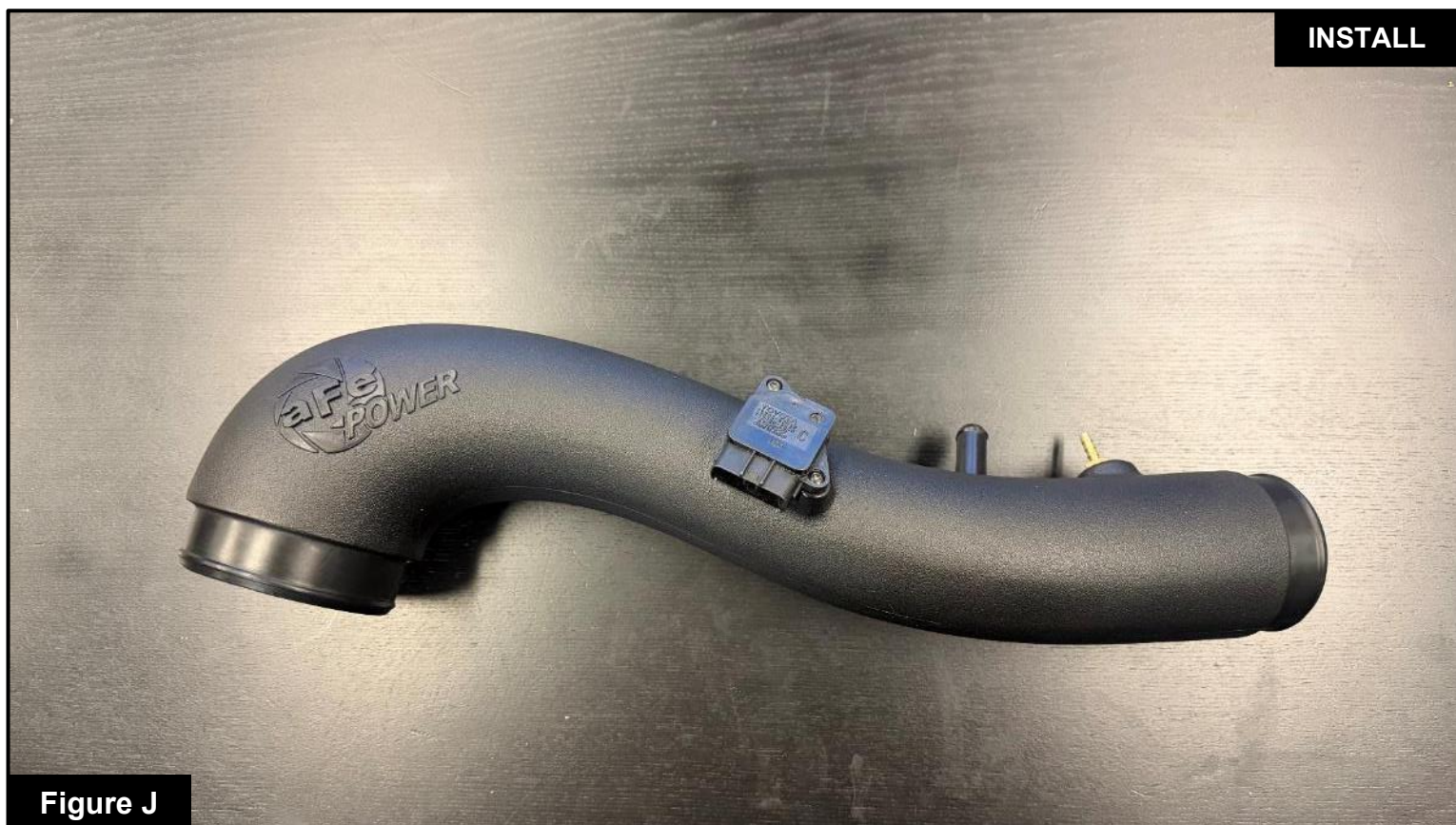
Step 13: Install the aFe POWER Housing into the vehicle and secure it with the three bolts removed at step 7.



Refer to Figure I for Steps 14-15

Step 14: Install the provided coupling over the throttle body. The smaller end of the coupling goes over the throttle body.

Step 15: Place the provided clamps over the coupling but do not tighten at this time.

**Figure J****Refer to Figure J for Steps 16-17**

Step 16: Transfer the MAF sensor from the factory housing to the aFe POWER tube. Secure it using the provided black M4 screws.

Step 17: Using an adjustable wrench or an 11mm wrench, install the supplied brass fitting into the NPT insert on the tube. For NPT fittings, it is normal to have a gap between the hex and the tube, do not overtighten.



Figure K

Refer to Figure K for Step 18

Step 18: Install the aFe POWER air intake tube into the air filter then into the coupling. Align tube, filter, and coupling, then tighten all clamps.

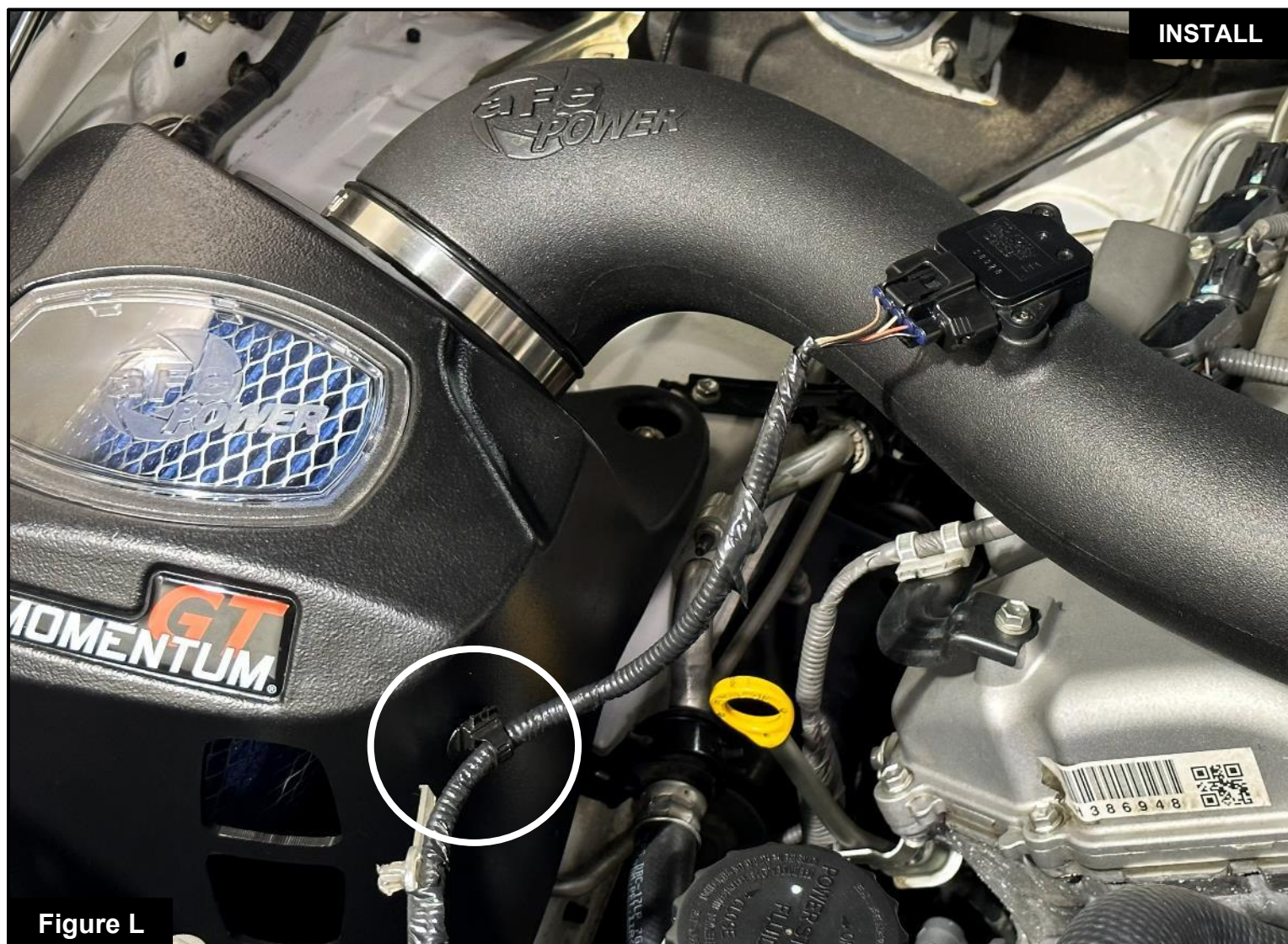


Figure L

Refer to Figure L for Step 19

Step 19: Reconnect the harness to the MAF sensor, make sure it locks in. Secure the harness by pushing one of the factory clips into the slot on the aFe POWER housing.

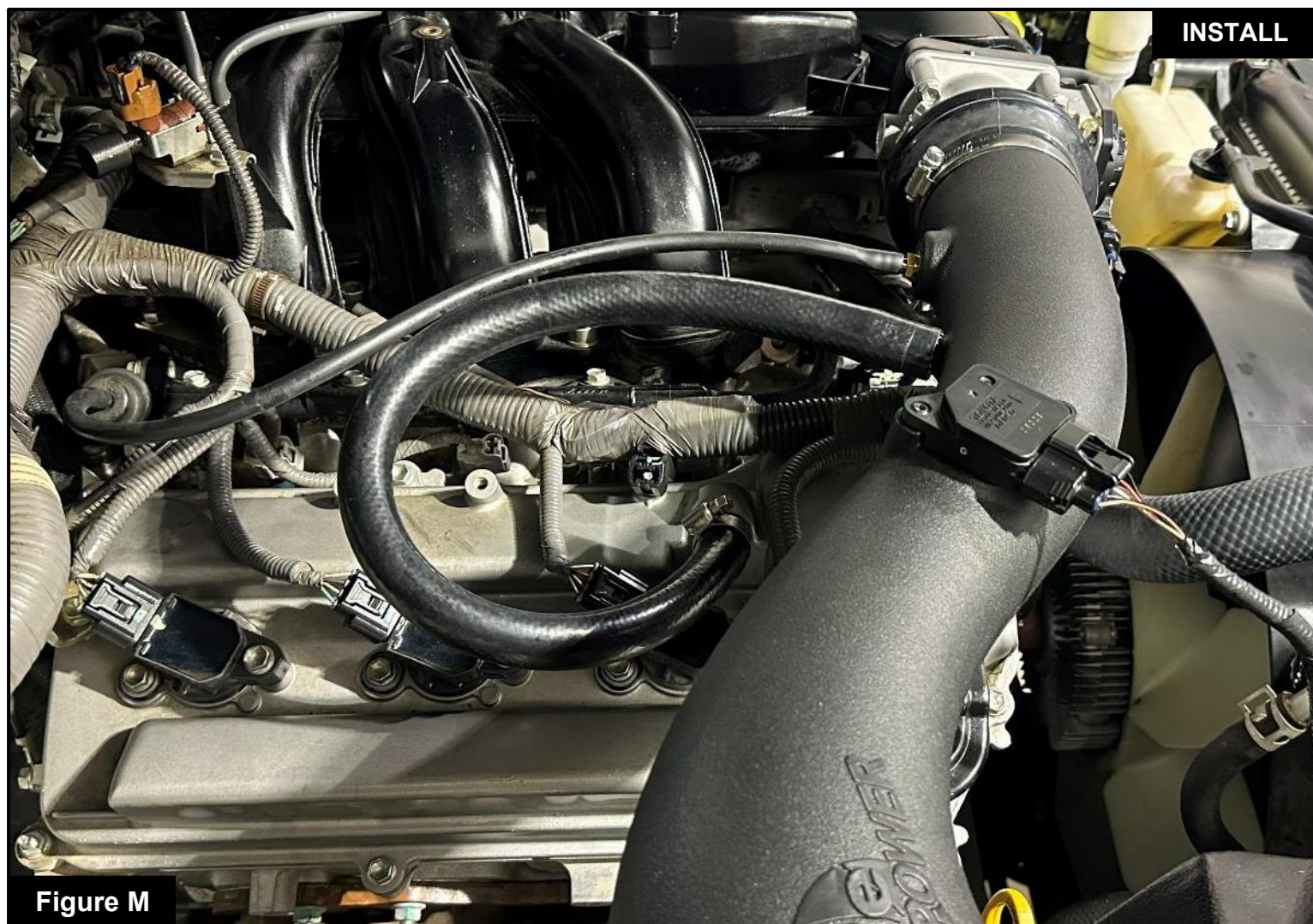


Figure M

Refer to Figure M for Steps 20-21

Step 20: Install the provided 5/32" ID hose between the engine connection and the brass fitting on the aFe POWER tube.

Step 21: Either rotate the bigger hose and connect it to the aFe POWER tube or replace it with the provided hose and connect the engine to the aFe POWER tube. Make sure the hose does not kink.



INSTALL

Figure N

Refer to Figure N for Step 22

Step 22: The kit includes an optional plug to close off the side auxiliary air inlet. Install the plug if you wish to close off the side auxiliary air inlet and only capture cold air from the front.

- Without the plug installed, the Momentum air intake will capture the maximum air available. More airflow offers more power. Yet some of this air is picked up from inside the engine compartment and could be warmer air. Warmer air will affect the performance of the vehicle.
- The plug installed on the housing will block off any hot engine air entering the housing and make sure the coolest air available is directed into the engine. It will also reduce the noise of the intake.



Figure O

Refer to Figure O for Step 23

Step 23: If your vehicle was equipped with an engine cover, reinstall it.

Your installation is now complete. Verify that all connections and screws are secured.

Thank you for choosing aFe POWER!



PAGE LEFT BLANK INTENTIONALLY



advanced FLOW engineering, Inc.

Corona, CA 92879

<https://afepower.com/contact>