

## FRONT SPEC SERIES BUMPER

24-26 GMC SIERRA 2500/3500

FBGC2-02



### TOOLS REQUIRED

- + 7mm, 10mm, 13mm, 15mm, 18mm, 19mm, 21mm sockets
- + #4, #5, #8 Allen tool/socket
- + 10mm, 13mm, 18mm, 19mm, 21mm wrenches
- + 6"-12" Socket Extension
- + Trim Tool
- + Safety Glasses
- + Cutting tool (box knife, etc.)
- + Flush cutters

### SKILL LEVEL

- + Novice/Intermediate
- + 1 (you) to 2 persons

Little skill level required, you can easily install it by yourself however, additional help will be useful to prevent injury or damage.

### TIME REQUIRED

- + Approximately 4.5 Hours

### WARNINGS/CAUTIONS BEFORE STARTING INSTALLATION

Before you install this kit – Read and understand all instructions, warnings, cautions, and notes contained in this installation instruction guide. Consult your vehicle owner's manual for proper disconnection of electrical and lifting of vehicle if required for installation of this product.

This install may require some technical skills and knowledge of basic mechanical work. If you do not feel that you are capable of performing this install please take this product to a trained professional.

After reading this guide please contact us with any questions or concerns before installing product.

Customer Service: 855-680-9595

*DV8 Offroad is not responsible for any bodily injury or harm to you or your vehicle as a result of an improper install.*

Proper installation of this kit required knowledge of the factory recommended procedures for removal and installation of original equipment components. We recommend that the factory shop manual and any special tools needed to service your vehicle be on hand during the installation. Installation of this kit without proper knowledge of the factory recommended procedures may affect the performance of these components and the safety of the vehicle

- *Always wear eye protection when operating power tools*

*Inspect all contents of this package to make sure product is not damaged and all installation hardware has been included. If parts are missing from kit, please be prepared to provide the following information*

1. Name of purchase location
2. Bar Code on side of box
3. Date above bar code
4. Date inside box cover

# HARDWARE INCLUDED

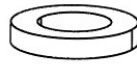
Begin by unpacking all items and inspecting for missing pieces or damage. If you have any concerns, please contact the company the product was purchased from. Extra hardware may be included with the product.



(4) M6x20mm Allen Bolts



(4) M6 Nylock Nuts



(8) M6 Flat Washers



(14) M12 Nylock Nuts



(32) M12 Flat Washers



(4) M12 Fender Washers



(8) M12x30mm Allen Bolts



(4) M12x35mm Hex Bolts



(4) M12x140x35mm Hex Bolts



(8) M12 Nutclips



(6) M12x30mm Hex Bolts

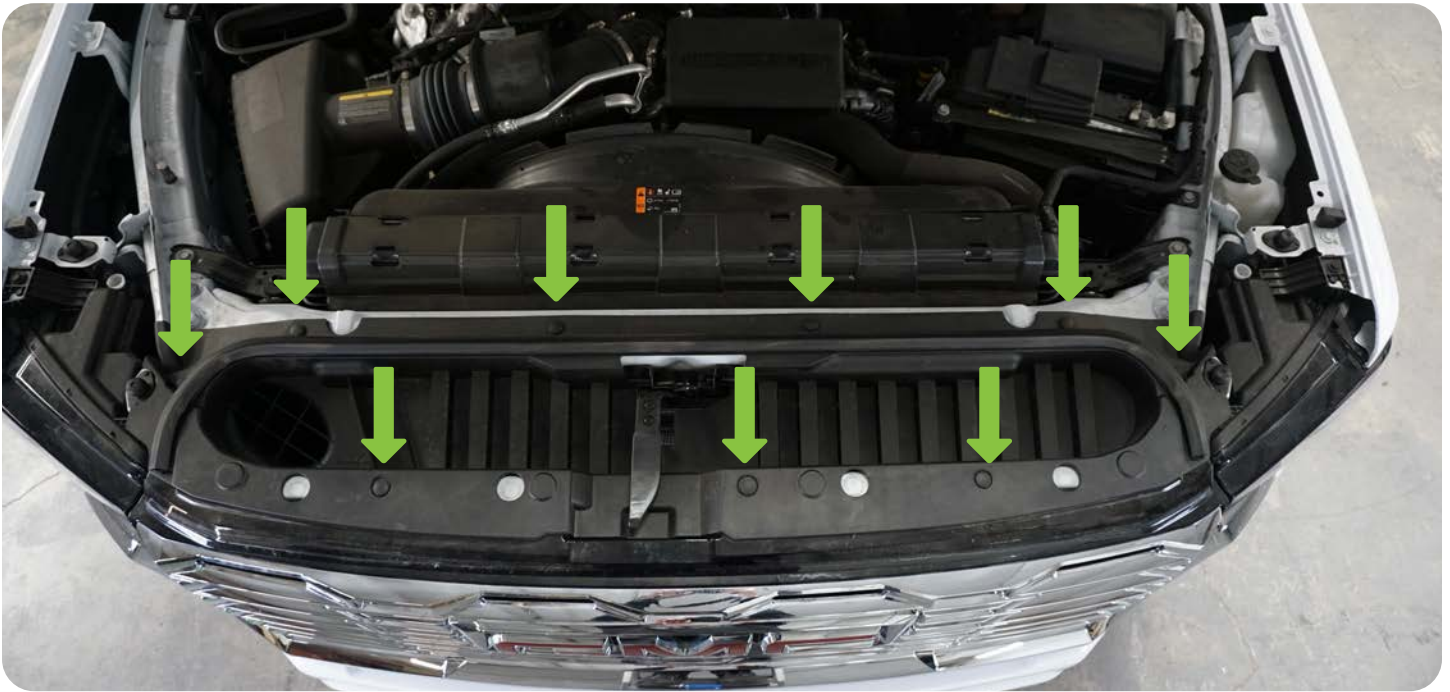


(2) Foam Pads

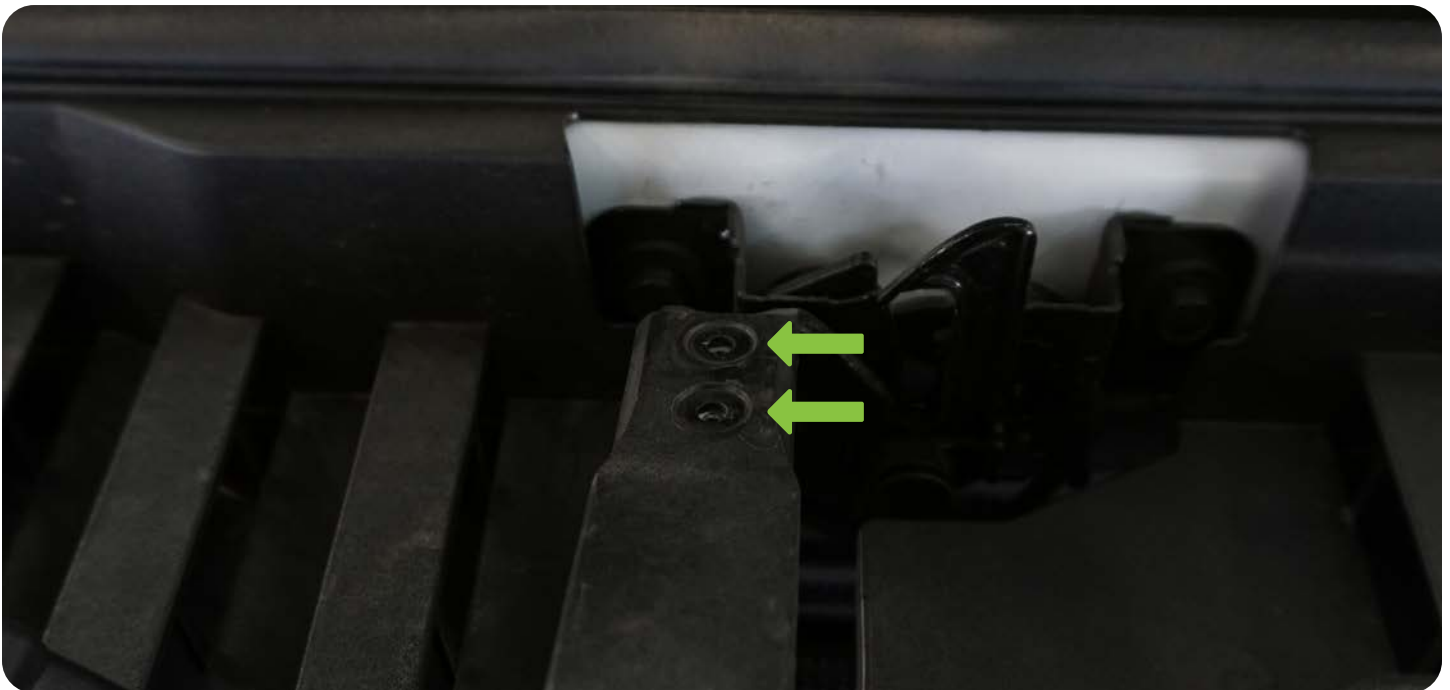
## PARTS INCLUDED

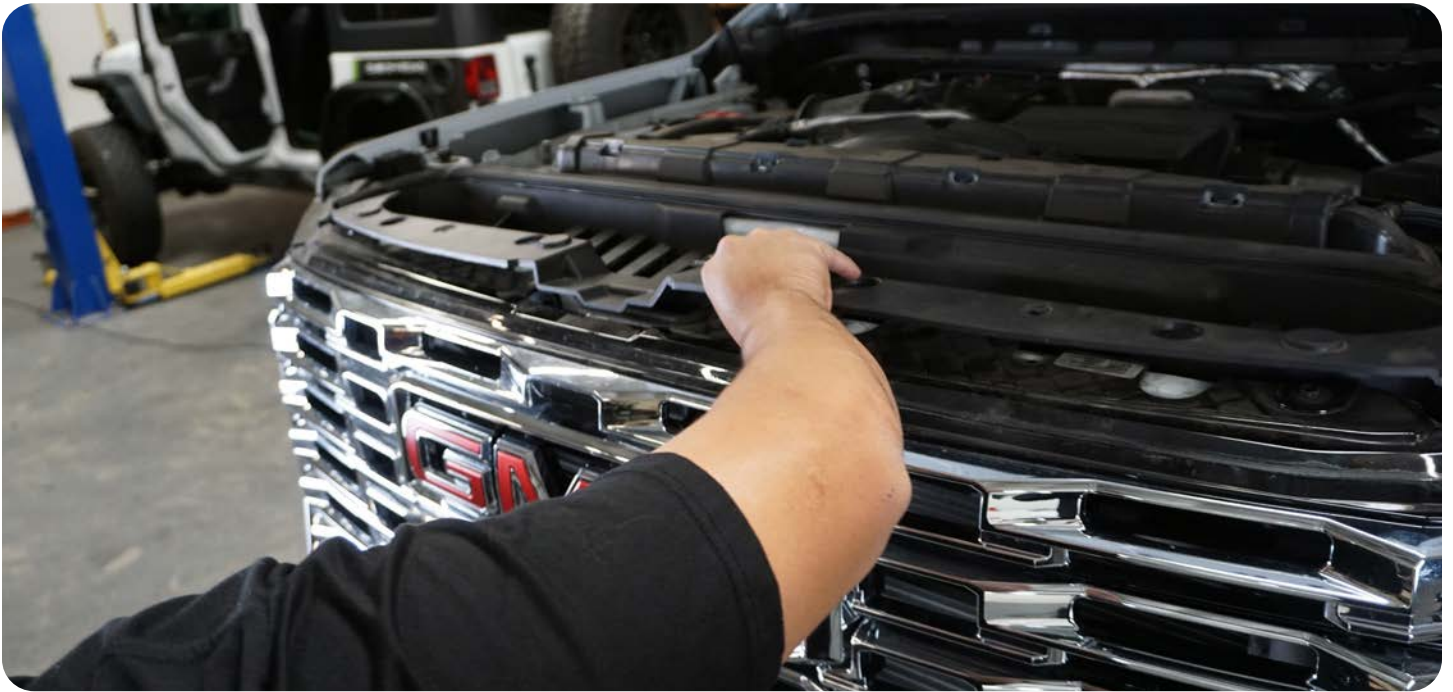


**STEP 1** | USING A TRIM TOOL TO REMOVE THE (9) CLIPS HOLDING THE RADIATOR TOP COVER.



**STEP 2** | USING A #4 ALLEN TOOL, REMOVE THE HOOD LATCH HANDLE BEFORE REMOVING THE RADIATOR TOP COVER.





**STEP 3** | REMOVE THE (2) TORX BOLT ON THE INNER WHEEL WELL WITH T15 TORX BIT ON BOTH SIDES.



**STEP 4** | CAREFULLY PULL BACK ON THE FENDER TO UNCLIP IT FROM THE BODY, EXPOSING A 7MM BOLT. ENSURE TO TAKE YOUR TIME AND PULL STRAIGHT BACK TO AVOID BREAKING ANY CLIPS.



**STEP 5** | REMOVE THE BOLT USING 7MM SOCKET.



**STEP 6** | ONCE THE BOLT IS REMOVED, CAREFULLY PULL THE BODY PANEL AND REMOVE HEADLIGHT VALANCE BODY PANEL.

NOTE: ENSURE TO TAKE YOUR TIME AND PULL STRAIGHT BACK TO AVOID BREAKING ANY CLIPS.



**STEP 7** | UNPLUG THE (2) PIGTAILS ON THE PASSENGER SIDE.



**STEP 8** | ON THE DRIVER SIDE, DISCONNECT THE HOSE FOR THE WASHER FLUID THAT LEADS TO THE FRONT CAMERA (IF EQUIPPED).



**STEP 9** | ONCE BOTH PANELS, BOLTS ARE REMOVED, AND PIGTAILS DISCONNECTED, PULL BACK THE FRONT BUMPER GRILLE/FASCIA.

NOTE: ENSURE TO TAKE YOUR TIME AND PULL STRAIGHT BACK TO AVOID BREAKING ANY CLIPS.

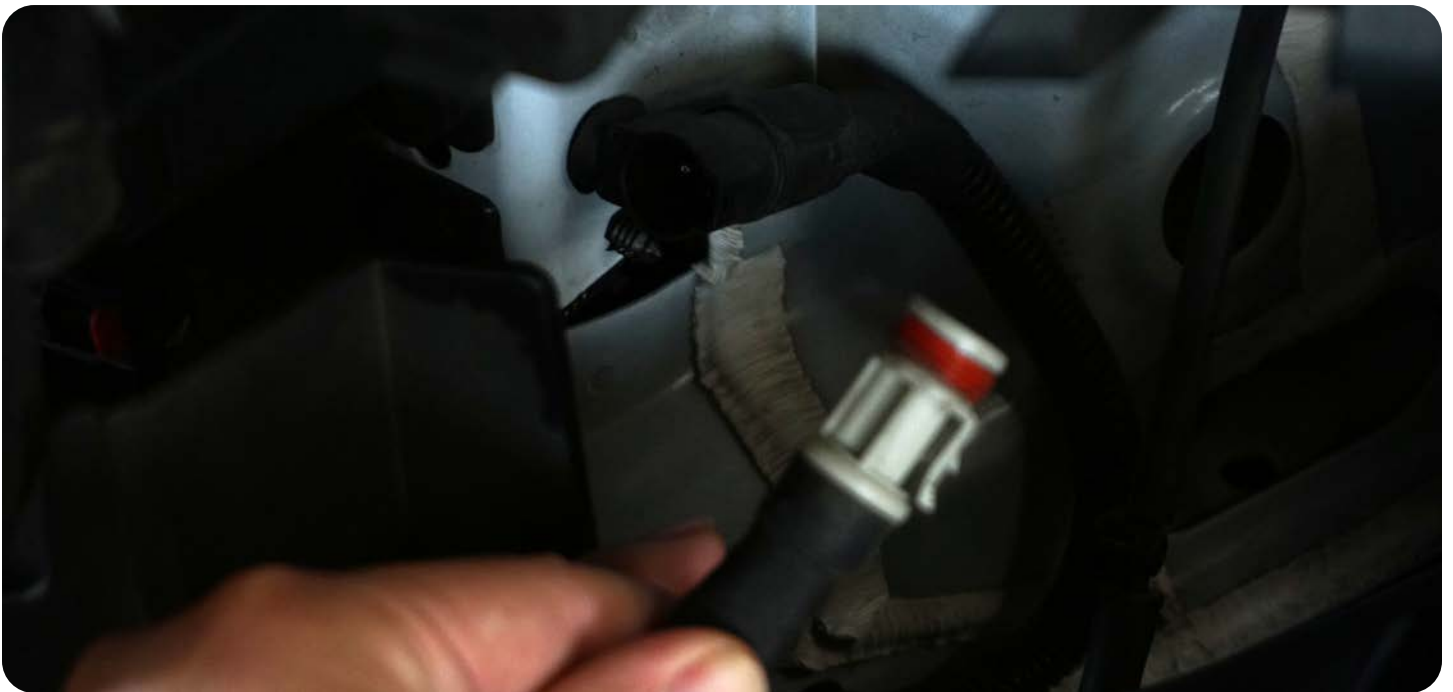




**STEP 10** | USE A 18MM SOCKET AND EXTENSION FOR THE (4) BOLTS ON THE TOP SIDE OF THE BUMPER.



**STEP 11** | IF EQUIPPED, LOCATE AND UNPLUG THE PIGTAIL FOR THE BLOCK HEATER TYPICALLY LOCATED ON THE DRIVERSIDE.



**STEP 12** | UNDERNEATH THE VEHICLE, USE A 15MM SOCKET TO REMOVE THE (4) TOTAL BOLTS ON THE BUMPER BRACKETS ON BOTH SIDES.



**STEP 13** | REMOVE BUMPER AND SET OFF TO THE SIDE.





**STEP 14** | USING A 18MM SOCKET AND WRENCH, REMOVE THE (2) BOLTS AND NUTS FROM THE TOW HOOKS ON BOTH SIDES.





**STEP 15** | USING A 15MM SOCKET, REMOVE THE (4) BOLTS ON EACH SIDE TO REMOVE BUMPER BRACKET.



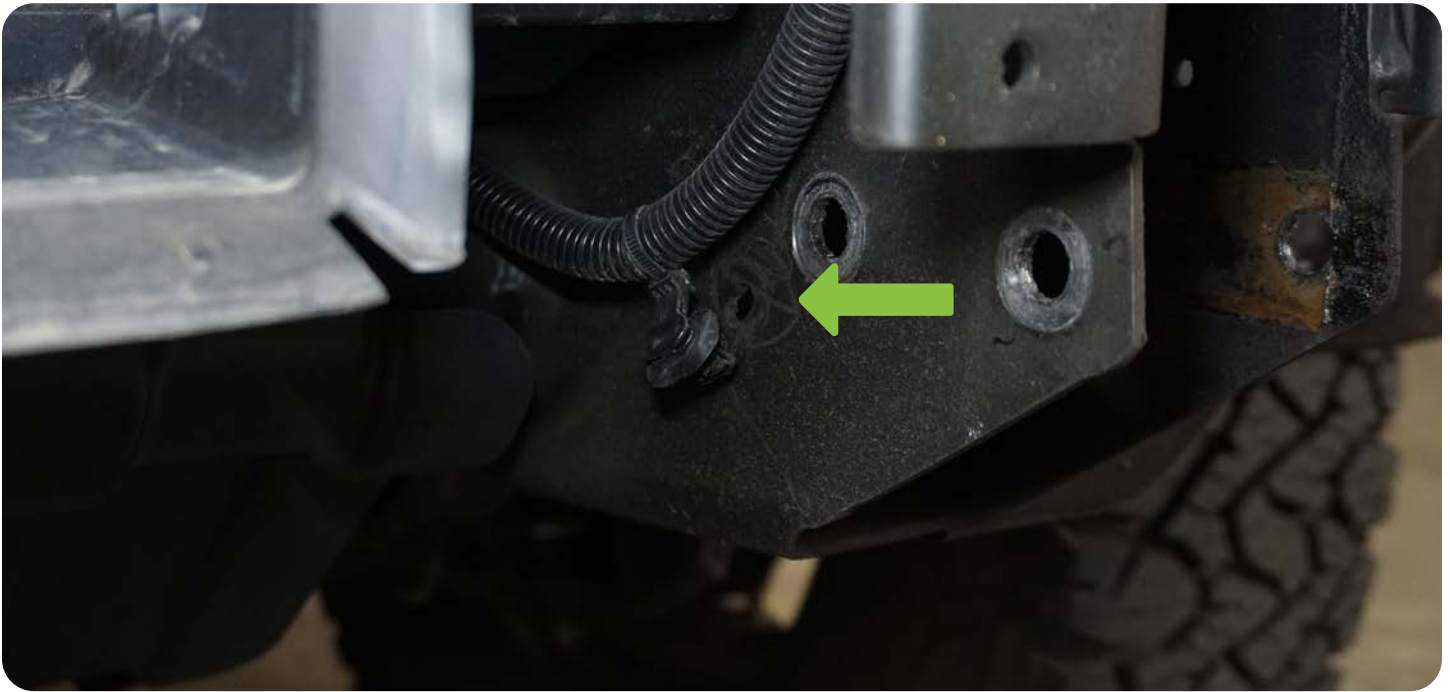


**STEP 16** | IF EQUIPPED WITH A LOWER INTERCOOLER SHUTTER ASSEMBLY. OUR SISTER COMPANY, ADDICTIVE DESSERT DESIGN, SALES THE SHUTTER MOTOR BRACKET ASSEMBLY THAT WILL BE NEEDED.

PART # AC4400901NA



**STEP 17** | REMOVE WIRE HARNESS CLIPS ON BOTH SIDES ON THE FRAME FOR WINCH ASSEMBLY CLEARANCE.



**STEP 18** | INSTALL OUR WINCH MOUNT TO VEHICLE.

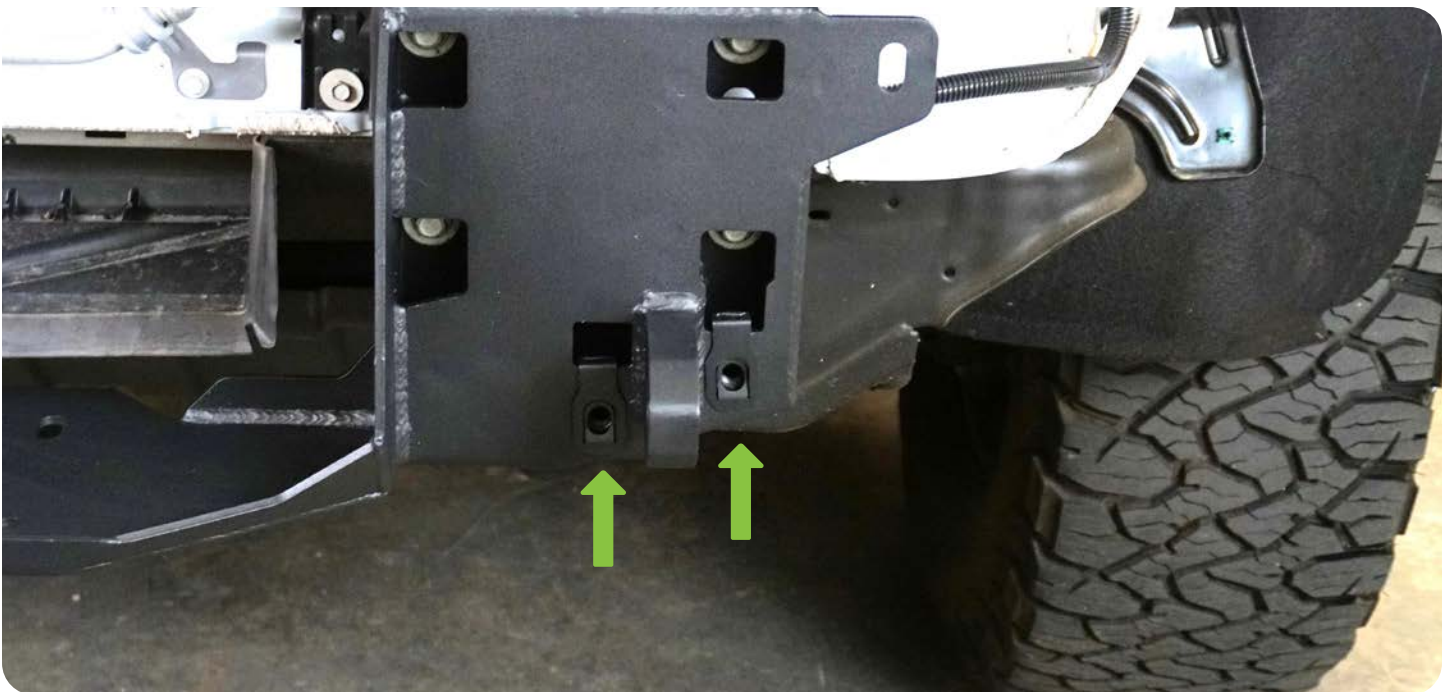
NOTE: SECOND PAIR OF HANDS WILL BE RECOMMENDED TO AVOID DAMAGE TO THE VEHICLE AND PERSONAL INJURY. IT WILL BE A SNUG FIT AROUND THE FRAME.



**STEP 19** | USING A 15MM SOCKET, USE THE (8) FACTORY BOLTS TO INSTALL THE WINCH MOUNT TO THE FRAME.



**STEP 20** | INSERT THE (2) PROVIDED M12 NUTCLIPS ON BOTH SIDES OF THE BUMPER BRACKET.



**STEP 21** | TO ASSEMBLE BUMPER, START WITH ATTACHING THE (2) FOAM PADS PROVIDED TO THE END OF THE BUMPER WHERE THE WINGS WILL BE ATTACHED TO.



**STEP 22** | USING A 17MM WRENCH AND 18MM WRENCH, LOOSELY INSTALL (3) M12X30 BOLTS, WASHERS, AND NUTS.

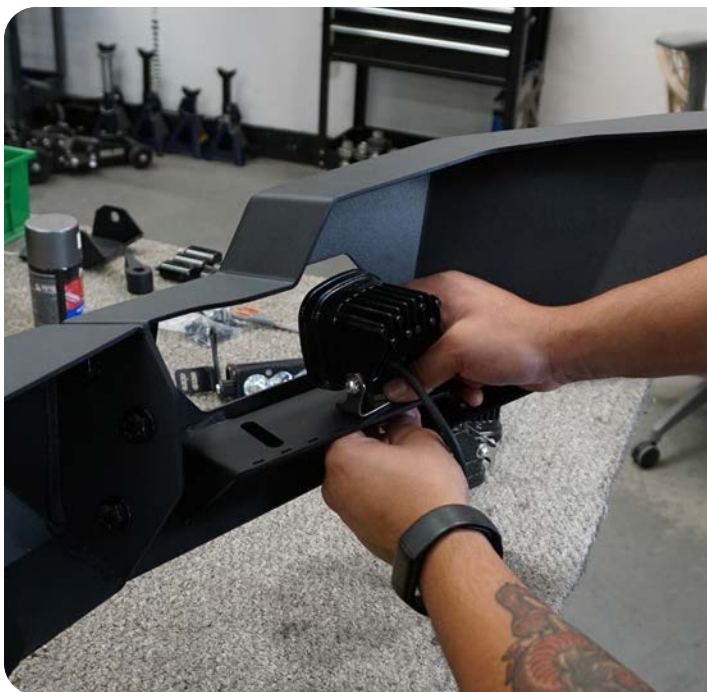


**STEP 23** | ALIGN THE WING TO THE FACE/FRONT OF THE BUMPER, AND SECURE THE BOLTS.

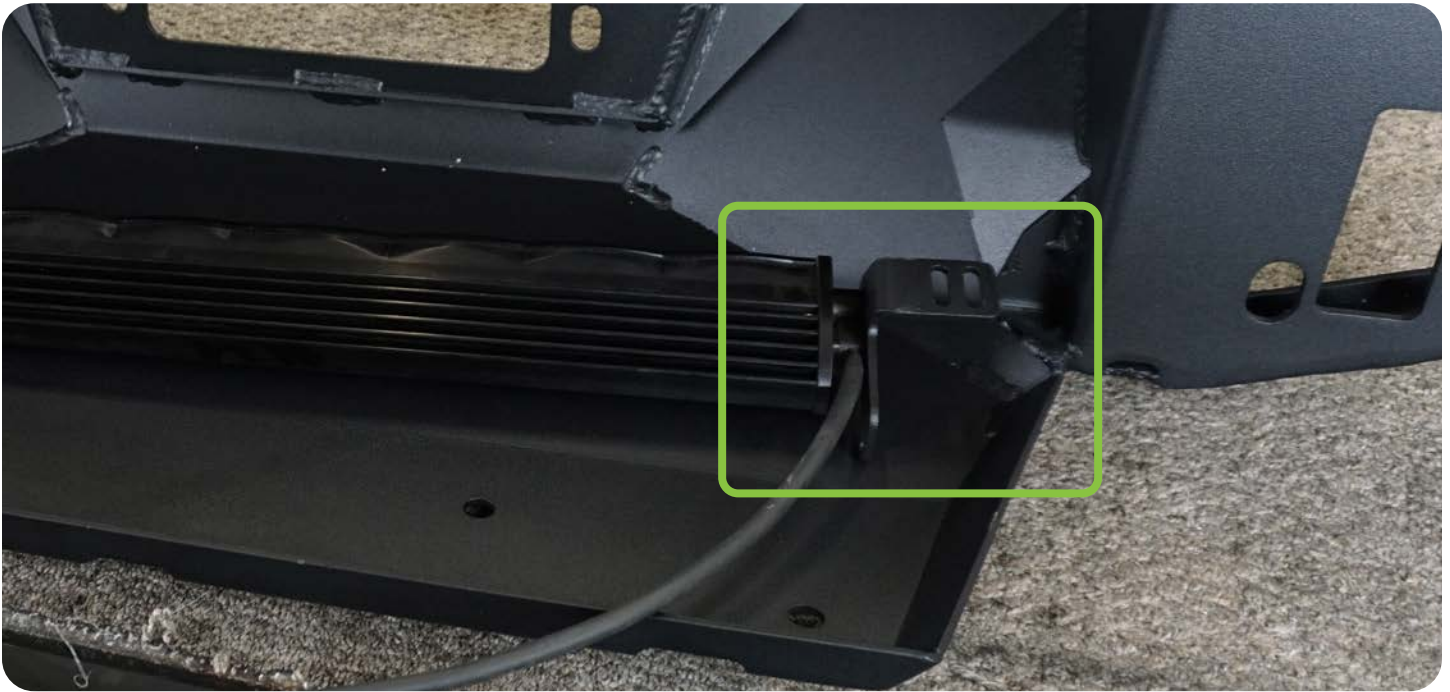
REPEAT THE PROCESS TO THE OTHER SIDE OF THE WING.



**STEP 24** | EACH WING CAN ACCEPT (2) 3" POD LIGHTS. USING THE HARDWARE PROVIDED WITH THE LIGHTS, INSTALL THEM NOW.



**STEP 25** | THE CENTER LIGHT CAN ACCEPT (1) 20" LIGHT BAR. USING THE HARDWARE PROVIDED WITH THE LIGHT, MOUNT THE BRACKETS TO THE LIGHT AS SHOWN.



**STEP 26** | USING A #4 ALLEN WRENCH AND 10MM WRENCH, INSTALL THE (4) M6X20 BOLTS, WASHERS, AND NUTS TO THE LIGHT BAR BRACKET.



**STEP 27** | CENTER THE LIGHT AND THEN SECURE THE (4) BOLTS.



**STEP 28** | IF ADDING A WINCH TO YOUR VEHICLE. INSTALL THE FAIRLEAD NOW FOR EASIER ACCESS TO THE NUTS AND BOLTS.



**STEP 29** | PLACE FACTORY BUMPER ON A TABLE OR A PLACE IT WILL NOT GET DAMAGED AND START REMOVING THE HARNESS



**STEP 30** | REMOVE THE PLASTIC CLIPS THAT ARE HOLDING THE HARNESS IN PLACE TO THE BUMPER.





**STEP 31** | DISCONNECT THE CONNECTORS OFF THE FOG LIGHTS (IF EQUIPPED).





**STEP 32** | IF EQUIPPED WITH PARKING SENSORS, CAREFULLY REMOVE THE SENSORS FROM THE BEZELS.

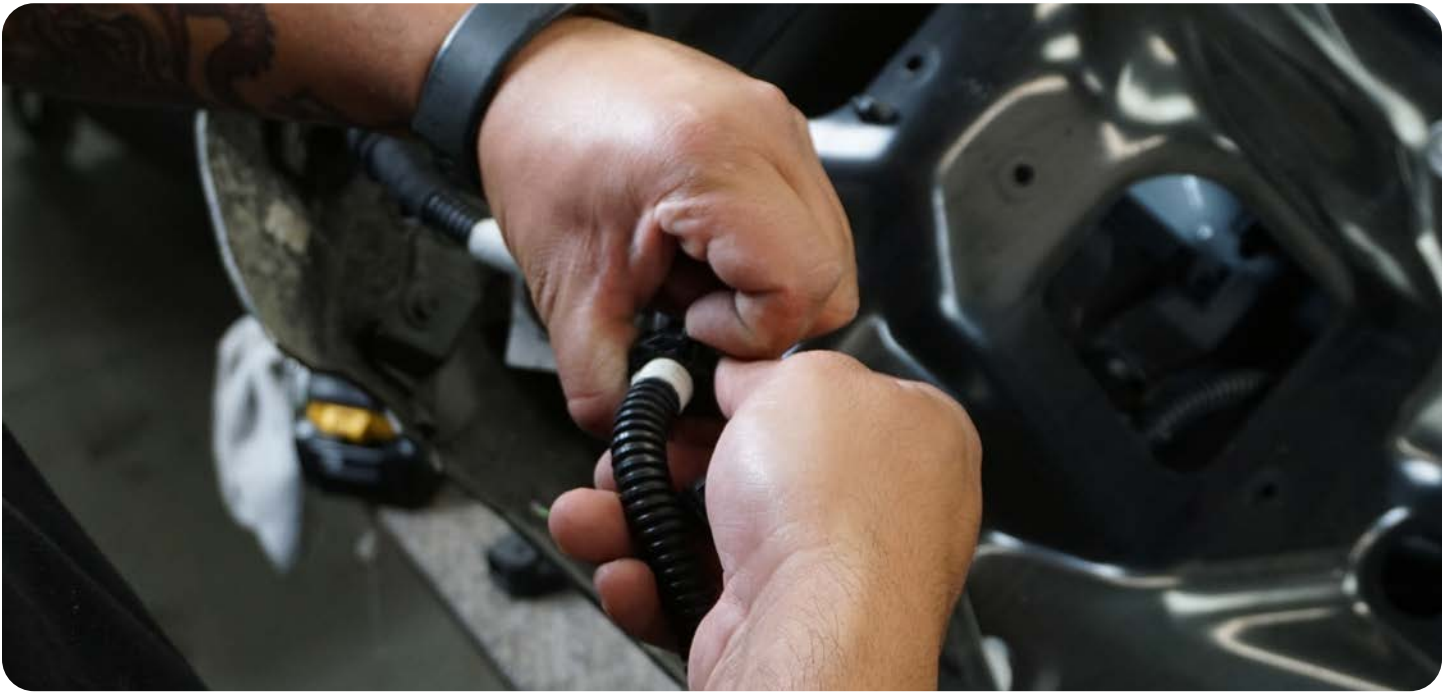
NOTE: IF YOU HAVE A PAINTED BUMPER, BE AWARE THAT TAKING THE BEZELS OUT CAN CAUSE PAINT CHIP DAMAGE.





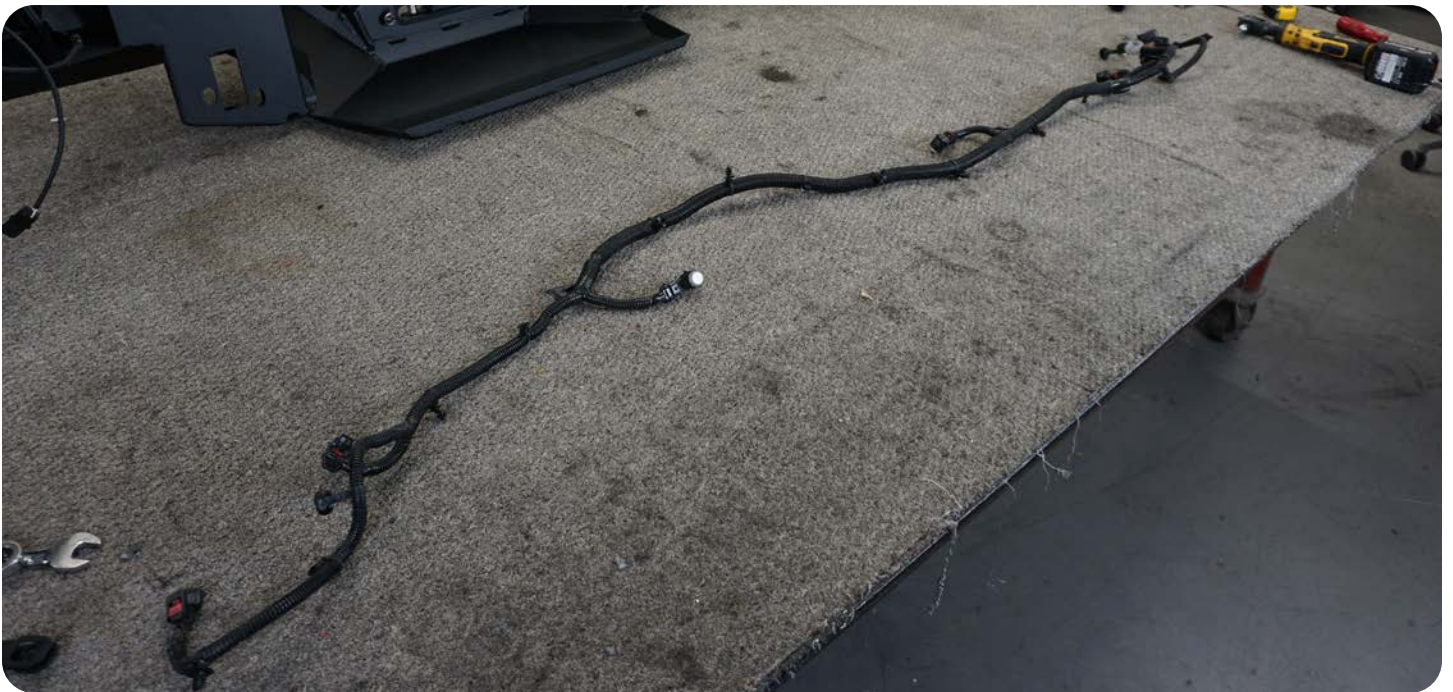
**STEP 33** | TO REMOVE THE BLOCK HEATER HARNESS, PRESS IN THE SPRING LOADED CLIP AND TWIST COUNTER CLOCKWISE AND PULL OFF. REMOVE THE CLIPS TO FULLY REMOVE THE SPRING AND THE CLIP HOLDING ON TO IT. PULL HARNESS THROUGH BUMPER.



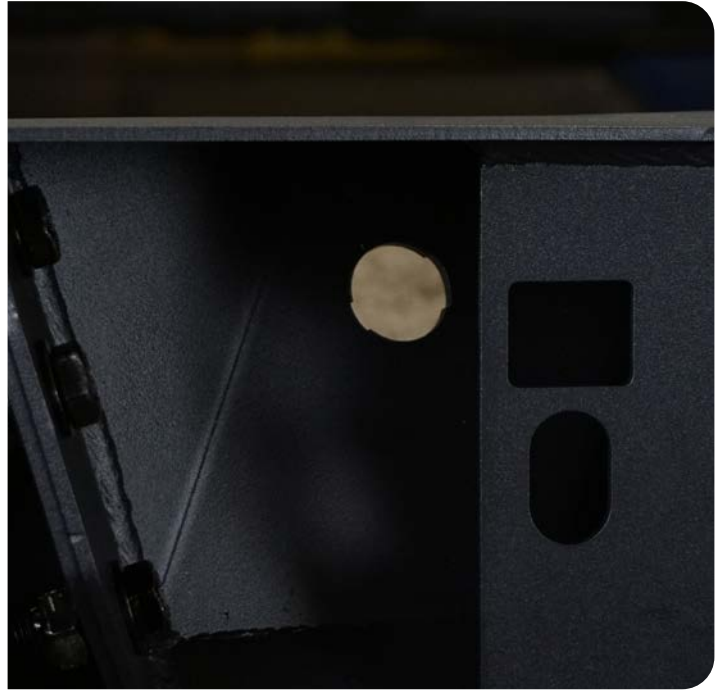


**STEP 34** | REMOVE THE HARNESS FROM THE BUMPER AS THE SAME ORIENTATION AS YOUR BUMPER TO NOT HAVE IT MIXED UP WHEN INSTALLING TO YOUR NEW BUMPER.

NOTE: WE RECOMMEND LABELING A SENSOR OR PIGTAIL THAT WOULD SAY WHICH AREA OF THE PIGTAIL IT IS FROM. EX: DRIVER SIDE PIGTAIL ON LEFT SIDE OF THE BUMPER.



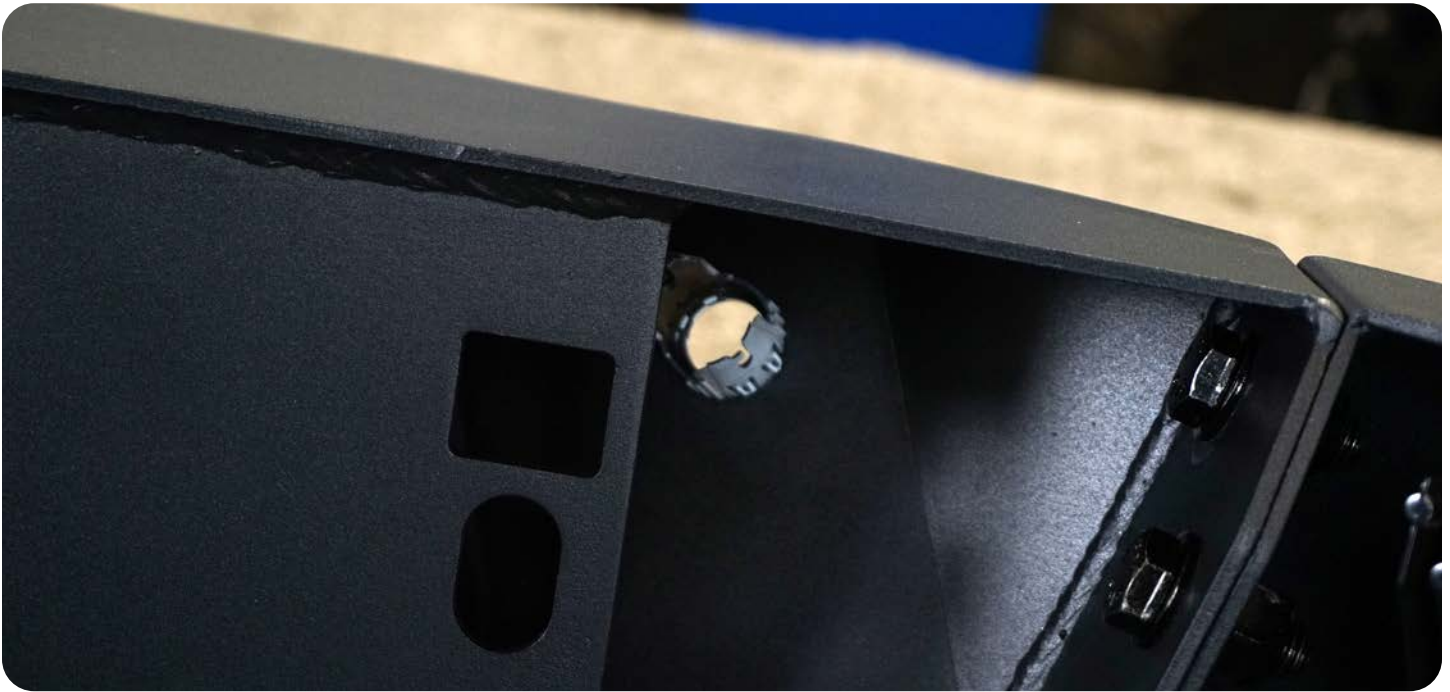
**STEP 35** | IF EQUIPPED WITH PARKING SENSORS, REMOVE THE RUBBER SENSOR PLUGS.



**STEP 36** | ROUTE HARNESS THROUGH BUMPER ROUGHLY ALIGNING SENSORS WITH THEIR RESPECTIVE OPENINGS.



**STEP 37** | WHEN INSTALLING THE BEZELS TO THE BUMPER, MAKE SURE THEY ARE ORIENTED TO MATCH AS CLOSE AS POSSIBLE TO HOW THEY FIRST CAME OUT OF THE ORIGINAL BUMPER. (EX. PUT LEFT OUTER BEZEL TO THE LEFT OUTER PART OF THE BUMPER.)



**STEP 38** | INSTALL THE PARKING SENSOR AND THE BEZEL AT THE SAME TIME. WHILE THE BEZEL IS STILL OUT AND THE SENSOR ON THE BEZEL. SQUEEZE THEM TOGETHER AND FLUSH TO THE BUMPER. THERE WILL BE A CLICK OR IT WILL SIT CORRECTLY ON THE BUMPER.





**STEP 39** | ENSURE THE SENSOR IS PROPERLY SEATED AND THE SENSOR RING IS NOT PINCHED.

NOTE: IT IS VITAL THAT THE SENSORS ARE PROPERLY INSTALLED TO ENSURE PROPER FUNCTION. ONCE THE BUMPER IS MOUNTED ACCESS TO THE SENSORS IS LIMITED.



**STEP 40** | IF INSTALLING A WINCH, INSTALL WINCH ON THE BUMPER BRACKET/WINCH MOUNT AT THIS TIME.



**STEP 41** | USE THE PROVIDED HARDWARE THAT COMES WITH THE WINCH TO SECURE IT TO THE MOUNTING PLATE.

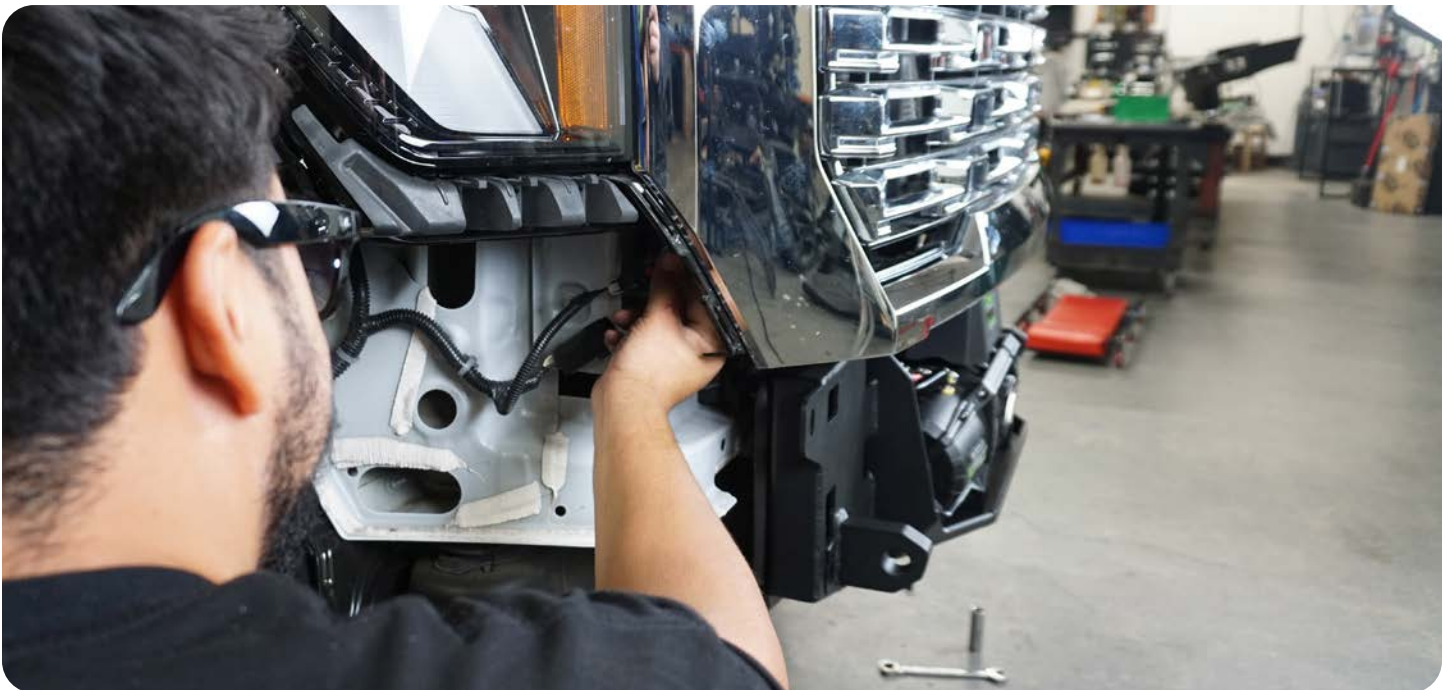


## STEP 42 | REINSTALL THE GRILLE/FASCIA TO THE VEHICLE



## STEP 43 | RECONNECT YOUR PIGTAILS, FOR THE SENSOR AND BLOCK HEATER IF EQUIPPED.

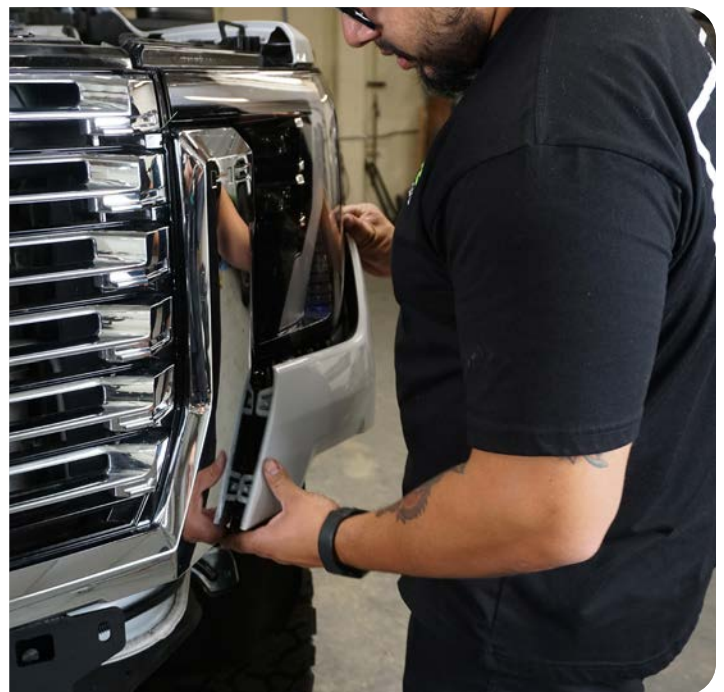
NOTE: IF EQUIPPED WITH BLOCK HEATER, TUCK IN OR ZIP TIE THE HARNESS TO FRAME FOR FUTURE USE.



**STEP 44** | REINSTALL THE WASHER FLUID HOSE FOR THE CAMERA.



**STEP 45** | INSTALL THE HEADLIGHT BODY PANEL ON BOTH SIDES.



**STEP 46** | INSTALL THE 7MM BOLT AND ATTACH THE FENDER FLARE BACK TO VEHICLE.



**STEP 47** | INSTALL THE M12 NUTCLIPS TO THE BUMPER ON THE UPPER OPENINGS.



**STEP 48** | WITH ASSISTANCE, LIFT THE BUMPER ONTO THE TRUCK OVER THE MOUNTS. TAKE CARE TO PREVENT DAMAGE TO THE D-RING MOUNTS DURING THIS.

LOOSELY INSTALL THE (2) M12X30 ALLEN BOLTS AND WASHER DIRECTLY LEFT AND RIGHT OF THE D-RING MOUNT ON EACH SIDE.



**STEP 49** | LOOSELY INSTALL THE (2) M12X35 BOLT AND WASHERS ON THE BACK OF THE UPPER PART OF THE BUMPER.



**STEP 50** | INSTALL THE WINCH MOUNT BRACKET, STRAIGHT EDGE FACING THE BACK OF THE BUMPER. LOOSELY INSTALL THE (2) M12X140X35 BOLTS, WASHER, AND NYLOCK NUTS TO SECURE BRACKET IN PLACE.



**STEP 51** | INSTALL M12X30 ALLEN BOLT, FENDER WASHER, AND NYLOCK NUT TO THE BRACKET AND WINCH MOUNT

INSTALL THE (2) INNER M12X30 ALLEN BOLT AND FENDER WASHER TO THE FRAME.



**STEP 52** | TO SECURE YOUR LONG FRAME BOLTS, USE AN 18MM SOCKET AND 19MM WRENCH FOR THE (2) FRAME BOLTS.

USE A #8 ALLEN SOCKET AND 18MM WRENCH TO SECURE THE MOUNT AND BRACKET BOLT. SECURE THE ALLEN BOLT TO THE FRAME USING A #8 ALLEN SOCKET.





**STEP 53** | SECURE YOUR FRONT (4) ALLEN BOLTS USING A #8 ALLEN SOCKET.



**STEP 54** | CUT THE EXCESS WHEEL WELL LINER AND REMOVE THE BRACKET.



**STEP 55** | REMOVE THE (2) BOLTS ON THE BRACKET USING A 10MM SOCKET. INSTALL THE (2) T15 TORX BOLTS ON THE FENDER LINER.



**STEP 56** | DOUBLE CHECK THE BUMPER IS ALIGNED AND ENSURE ALL HARDWARE IS SECURE.



# CONGRATULATIONS

YOU ARE FINISHED WITH THE INSTALL OF THE 2024+ GMC SIERRA 2500/3500 FRONT SPEC SERIES BUMPER.

## + SHARE YOUR PICS

WE LOVE SEEING HOW OUR CUSTOMERS USE THEIR DV8 OFFROAD PRODUCTS AND FOLLOWING ALONG WITH YOUR ADVENTURES. TAG US IN YOUR PHOTOS @DV8OFFROAD.WE ENJOY SHARING CUSTOMER PHOTOS ON OUR FEED.



## + WRITE A REVIEW

ARE YOU HAPPY WITH YOUR NEW DV8 OFFROAD PRODUCT? WE WOULD LOVE TO HEAR AND SEE YOUR EXPERIENCE. VISIT THE PRODUCT PAGE AND CLICK "WRITE A REVIEW". ADD A SHORT REVIEW AND UPLOAD A FEW PHOTOS TO BE FEATURED ON THE PRODUCT PAGE.

[WWW.DV8OFFROAD.COM](http://WWW.DV8OFFROAD.COM)

## + NEED HELP?

IF YOU ARE HAVING ANY ISSUES WITH YOUR PRODUCT, PLEASE REACH OUT. DV8 OFFROAD IS A COMPANY OF OFF ROAD ENTHUSIASTS THAT DESIGN AND USE OUR OWN PRODUCTS, SO WE WANT YOU TO BE JUST AS STOKED ON YOUR NEW PARTS AS WE ARE.

P. 855.680.9595

E. [SALES@DV8OFFROAD.COM](mailto:SALES@DV8OFFROAD.COM)

