



INSTALLATION GUIDE

PART NUMBER: 5989
LOWERING LEAF SPRING
GM 1500 2WD | 2019+

300 W. PONTIAC WAY. CLOVIS, CA 93612
PHONE: 800-445-3767 | EMAIL: INFO@BELLTECH.COM

THANK YOU

Thank you for choosing our high quality Belltech product. We have spent a great deal of time developing our line of products so that you will receive maximum performance with minimal difficulty during installation. Soon your vehicle will be on the road looking and feeling much improved.

Please take a moment to read all instructions and warnings prior to the installation of your new Belltech product and before operating your vehicle. For any questions or concerns regarding the steps in the installation process, please do not hesitate to call or email our customer support team who are trained to help you through any portion of this process.

Before You Begin:

It is of the utmost importance that you confirm all of the components listed on the parts list is in the kit. You can find this list located on the last page(s) of your instructions. Do not begin installation if any part is missing. Instead, please call our Belltech customer service specialists.

Belltech Customer Support:

Phone: 1-800-445-3767

Email: info@belltech.com

Safety Information:

Warning: Do not work under a vehicle supported only by a jack. Place support stands securely under the vehicle in the manufacturer's specified locations unless otherwise instructed.

Proper use of safety equipment and eye/face/hand protection is absolutely necessary when performing any of the following instructions.

We strive for an exceptional experience for all our valued customers. If for any reason you need assistance with your Belltech products, please do not return the product to the store you purchased from, but rather call our dedicated customer service experts, from 7am to 5pm PST.

We recommend that a qualified mechanic, at a properly equipped facility, perform this installation.

It is very helpful to have an assistant available during installation.

Before Driving Your Vehicle:

It is important to double check all brake hoses, cables, and other components to be sure there is no interference. You must also check for wheel/tire to chassis/body interference. If any issues are found, review your installation instructions to be sure no steps were missed and any problems are corrected.

Make sure your vehicle is aligned immediately following installation.

Check all hardware and torque at intervals for the first 10, 100, and 1000 miles.

Some of Belltech's products are designed to improve your vehicle's off-road performance. Leveling/lifting your vehicle may result in an altered center of gravity. It is crucial to use extreme care when operating your vehicle to prevent rollover and/or loss of control.

Any changes in your vehicle's suspension may result in transformed handleability. Please test-drive your vehicle in a remote location so you can become accustomed to the revised driving characteristics.

Perform headlight check and adjustment.

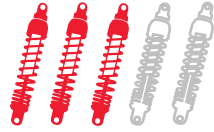
Failure to drive any modified vehicle in a safe manner may result in harm or death.

Never operate your modified vehicle under the influence of drugs, alcohol, or lack of adequate sleep.

Always wear your seatbelt.



DIFFICULTY:



INSTALLATION TIME: 3-4 Hours

RECOMMENDED TOOLS:

- Properly rated floor jack
- Support stands
- Wheel chocks
- Wrench set
- Socket wrench set
- Tape measure
- Safety glasses
- Large C-clamps
- Locking pliers
- 1/2" drive torque wrench up to 200 ft lbs.



Installation note:

This installation guide includes the steps needed to install Belltech bump stops part# 4923 and Belltech shackles part# 6416. These products are not included with the Belltech leaf springs but can be purchased separately or as part of complete kit# 350345.

INSTALLATION PREPARATION:

Before beginning the installation process, measure the hub to fender heights for your vehicle and record them in the "Before" section. After your vehicle has been modified, record the new measurements in the, "After" section. This way, you can compare the resulting height to the original. When taking the measurements, measure vertically from the center of the wheel to the inner edge of the fender.

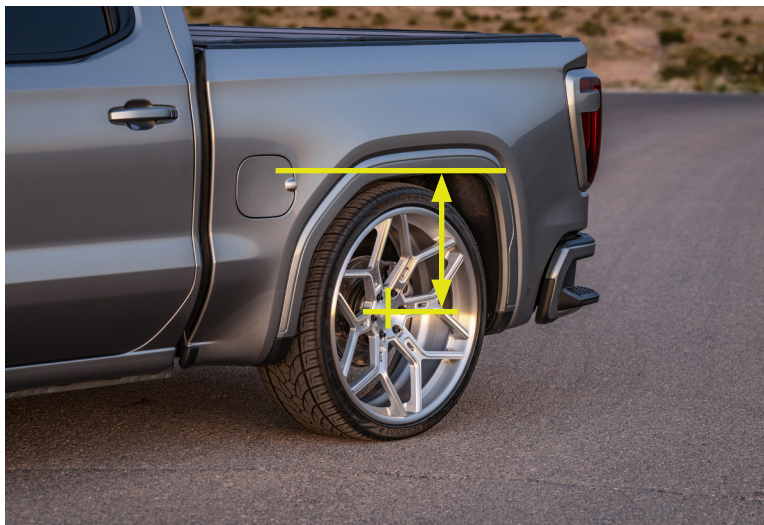
Before:

LF: _____

RF: _____

LR: _____

RR: _____



After:

LF: _____

RF: _____

LR: _____

RR: _____

JACKING, SUPPORTING, AND PREPARING THE VEHICLE

1. Park your vehicle on a smooth, level, concrete or seasoned asphalt surface.
2. Block the front wheels of the vehicle using wheel chocks. Make sure the vehicle's transmission is in "PARK" (automatic) or 1st gear (manual).
3. Activate the parking brake.
4. Break loose, but do not spin the wheel lug nuts to ease in removal when the wheels are in the air.
5. Lift the rear of the vehicle off the ground using a properly rated floor jack. Lift the vehicle so the rear tires are approximately 6-8 inches off the ground.
6. Place support stands rated for the vehicles weight. The stands should be positioned, two on each of the frame rails, just forward of the front leaf spring hangers and just below the rear leaf spring shackle hangers. Prior to lowering the vehicle onto stands, make sure the support stands will contact the chassis. It is very important that the vehicle is properly supported to prevent any harm to ones self or to the vehicle.
7. Place a support stand under each side of the axle to support the weight of the axle. Make sure these are only supporting the weight of the axle; allowing the other 4 support stands to support the frame.
8. Lower the vehicle slowly onto the stands.
9. Remove the rear wheels.

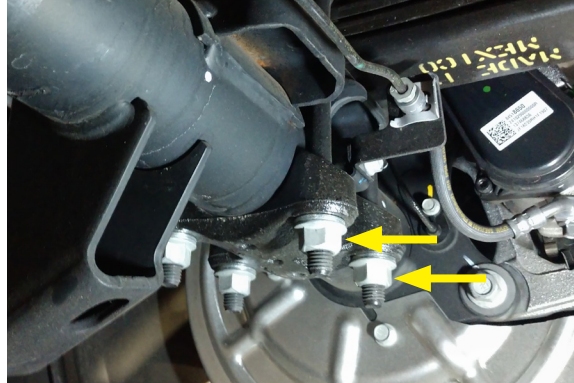


Technician reminder:

Never work under a vehicle supported only by a jack. It is necessary to place support stands securely under the vehicle in the manufacturer's specified locations unless otherwise instructed.

REAR SUSPENSION REMOVAL

10. Remove the 21 mm upper and lower nuts and bolts to detach the rear shock assemblies from the vehicle.
11. Ensure the axle is supported before removing the U-bolts. Remove the 21mm U-bolt nuts, lower plates, and U-bolts to detach the rear axle from the leaf springs.



12. Carefully, lower the axle from the leaf spring and support it; ensure not to put tension on any electrical or brake lines/hoses that are attached to it.
13. Break loose but do not remove the 15/16" rear leaf spring and shackle mounting bolts yet.
14. Remove the front leaf spring mounting bolt first; let the leaf spring rest on the axle. Remove the bolt securing the rear shackle to the hanger. Carefully remove the leaf spring assembly from the vehicle.



15. Remove the 15/16" rear shackle bolts to detach the shackles from the leaf springs.
16. The remove 10 mm bolts to detach the original bump stops from the vehicle.



BELLTECH LEAF SPRING INSTALLATION



Installation Note:

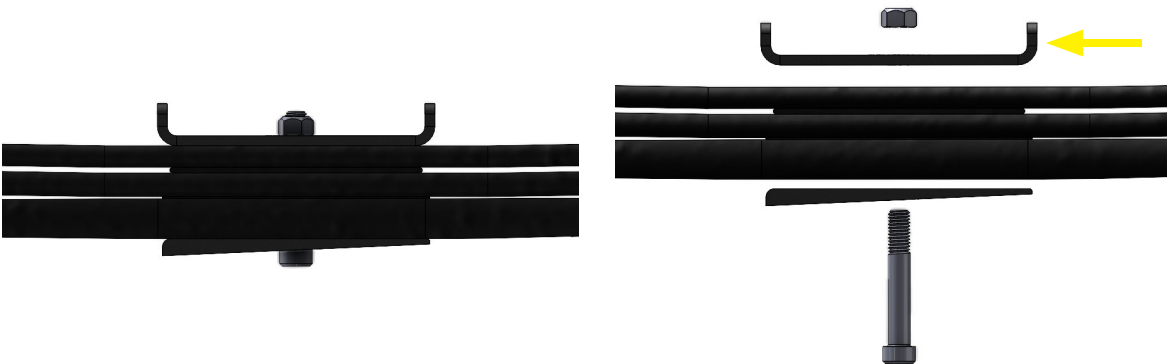
IF THE OEM FACTORY LEAF SPRING USES SQUARED U-BOLTS, PROCEED WITH INSTALLATION OF THE BELLTECH LEAF SPRINGS USING THE OEM U-BOLTS IN STEP 20.

IF THE OEM FACTORY LEAF SPRING USES ROUND U-BOLTS, PROCEED WITH PREPARING THE BELLTECH LEAF SPRINGS FOR ROUND U-BOLTS IN STEP 17.

17. Use a set of C-clamps to hold the leaf spring assembly together while the 15 mm center nut and bolt are loosened.



18. The upper U-bolt spring pad must be removed.



19. Tighten the center nut and bolt WITHOUT the original upper U-bolt spring pad.



BELLTECH LEAF SPRING INSTALLATION CONTINUED

20. Attach the Belltech shackles (part# 6416) to the rear of the Belltech leaf springs using the original nuts and bolts. Do not Torque yet.



21. Attach the supplied Belltech bump stops (part# 4923) with the original bolts. Torque the bump stop bolts to 37 ft lbs.



22. Place the Belltech leaf springs over the rear axle and attach the front of the leaf springs to the hangers with the original hardware. Tighten the nuts and bolts but do not torque yet.



23. Attach the rear shackle to the rear of the leaf spring hanger. Fasten with the bolt in the outward position. Do not torque yet.



BELLTECH LEAF SPRING INSTALLATION CONTINUED

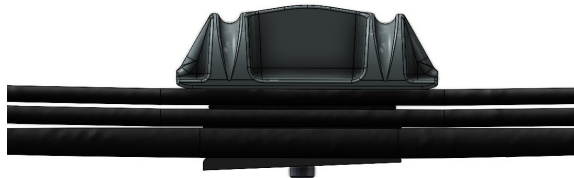
24. Center the axle onto the Belltech leaf spring centering bolt.



25. Place the original U-bolts over the leaf springs.



26. If the vehicle is equipped with ROUND U-bolts. Continue to utilize the OEM upper U-bolt spring adaptor.

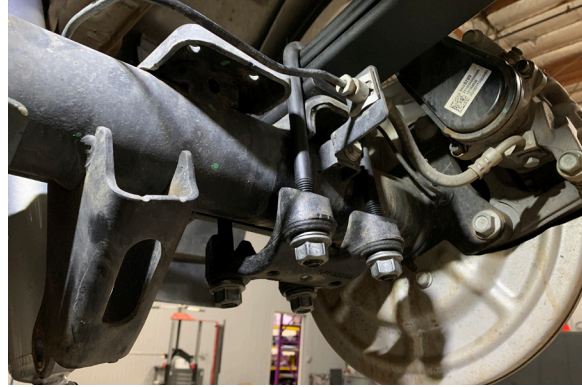
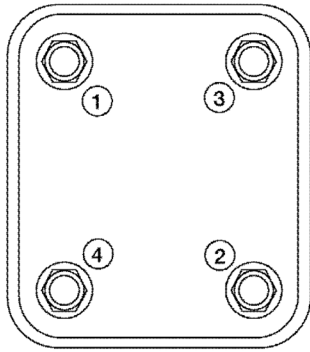


27. Slide the OEM lower axle U-bolt plate through the U-bolt ends.



BELLTECH LEAF SPRING INSTALLATION CONTINUED

28. Fasten the U-bolts with the original nuts and washers. Torque diagonally and evenly in the order shown below. First Pass: 59 ft lbs., Second Pass: Loosen 180 degrees, Third Pass: 59 ft lbs., Final Pass: tighten 120-140 degrees.



29. Attach the rear shock absorbers to the upper and lower mounts with the original hardware. Tighten but do not torque yet.



30. Mount the wheels and tighten the lug nuts.

31. Lift the vehicle and remove the support stands.

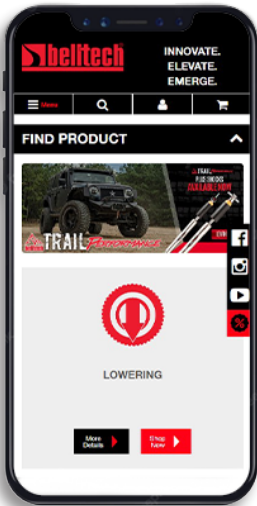
32. Carefully lower the vehicle onto the flat ground.

FINALIZING THE INSTALLATION

33. Torque the lug nuts to 140 ft lbs.
34. Torque the front leaf spring bolts to 160 ft lbs.
35. Torque the rear shackle to leaf spring and shackle to chassis bolts to 115 ft lbs.
36. Torque the upper and lower shock bolts to 70 ft lbs.
37. Check that all components and fasteners have been properly installed and torqued.
38. Read and perform all tasks in the “Before Driving Your Vehicle” section of page 1 of your instructions.

THANK YOU FOR CHOOSING BELLTECH.

You are now a part of the Belltech family and we are eager to catch a glimpse of your newly modified vehicle. Give us a shout out and let us know how much you love our product. Don't forget, we offer other Belltech related merchandise for you and your vehicle on our website www.belltech.com



belltechsuspension



Belltech Suspension



@belltechsuspension



@belltechsuspension

If you have any questions, concerns, or warranty related issues regarding your Belltech product, please call or email our experienced customer service specialists.

Belltech Customer Support:

Phone: 1-800-445-3767

Email: info@belltech.com

KIT CONTENTS



5989		
Part number	Description	Qty
5989-001-981	REAR LEAF SPRING	1



KW automotive North America, Inc.

300 W. Pontiac Way

Clovis, CA 93612

Phone: +1-559-875-0222

Toll Free: 1-800-445-3767

belltech.com