



For proper installation and best possible fit, please read all instructions BEFORE you begin.



Important Information

BEFORE you begin the installation process:

- Carefully read all instructions.
- Verify that all parts are included by checking the contents of your kit.

If any parts are missing or appear damaged, please contact our customer service team for assistance.

Customer Service

For support, please contact the Putco team, available Monday to Friday 8:30 AM to 5PM (Central Time).

1 800 247 3974

support@putco.com

Supported Vehicles

MAKE	MODEL	YEAR
Ford	F-150	2015+

Recommended Tools + Supplies

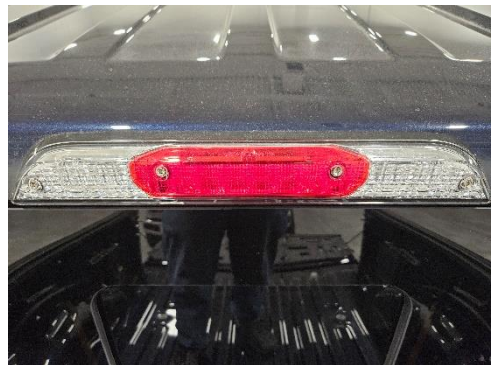
- 1/8", 9/64" Hex wrench	- 3/8" Wrench	- T20 Torx Driver
--------------------------	---------------	-------------------

Kit Contents

Bracket	4x 10-32 Bolt	4x 10-32 Lock Nut
Gasket		

Installation

1. Remove items from the packaging. Check to see if all parts from above table of contents are included.
2. With a T20 Torx driver, remove and keep the four screws holding in the 3rd brake light.



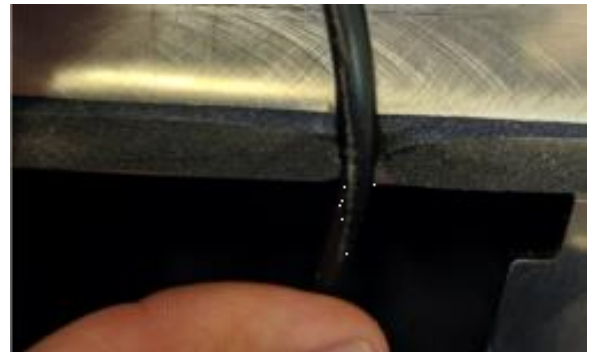
3. Remove the 3rd brake light by pulling outwards from the bottom of the light and unplugging the 3rd brake light from its harness.



4. Install the gasket onto the side of the bracket that will be facing into the truck.



5. Trim a small section of the top of the gasket to allow the wires to pass through.



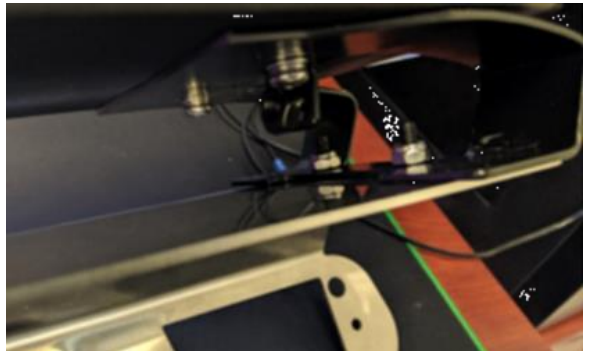
6. Peel off the 3M tape backing on the front of the bracket, feed the wires through the bracket and reconnect to the 3rd brake light.



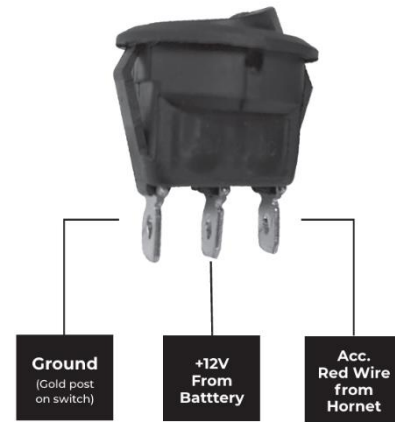
7. Now reconnect the third brake light using the T20 Torx driver.



8. At this point, install the hornet light on to the mounting bracket using the 10-32 nuts and bolts. This will require the 1/8" Allen and the 3/8" wrench. You can fish the wire through the hole in the bracket for a cleaner look.



9. Inside the cab fish the wire past the headliner. Run down the C pillars and to the front of the cab. The gold tab needs to be connected to ground. One of the silver leads connects to +12VDC and the other connects to the red wire from the Hornet.



To switch modes on the Hornet, tap the yellow wire to +12VDC. It will remember patterns when switched off.

Congratulations on completing the installation of your Putco product!
For information regarding your warranty, please visit www.putco.com/warranty.

Issues? Please Contact Our Technical Support Team: 1 800 247 3974



WARNING: Final Inspection required. Inspect product was properly Installed and all installation instructions were followed.



For additional information, please visit our website at www.putco.com!