

advanced FLOW engineering

Cold Air Intake System

Instruction Manual P/N: 56-10073D / 56-10073R

Make: HYUNDAI
Make: KIA

Model: SONATA N-LINE
Model: K5 GT

Year: 2021-2026
Year: 2021-2026

Engine: L4-2.5L (t)
Engine: L4-2.5L (t)



- Please read the entire instruction manual before proceeding.
- Ensure all components listed are present.
- If you are missing any of the components, call customer support at 951-493-7185.
- Ensure you have all necessary tools before proceeding.
- Do not attempt to work on your vehicle when the engine is hot.
- Retain factory parts for future use.

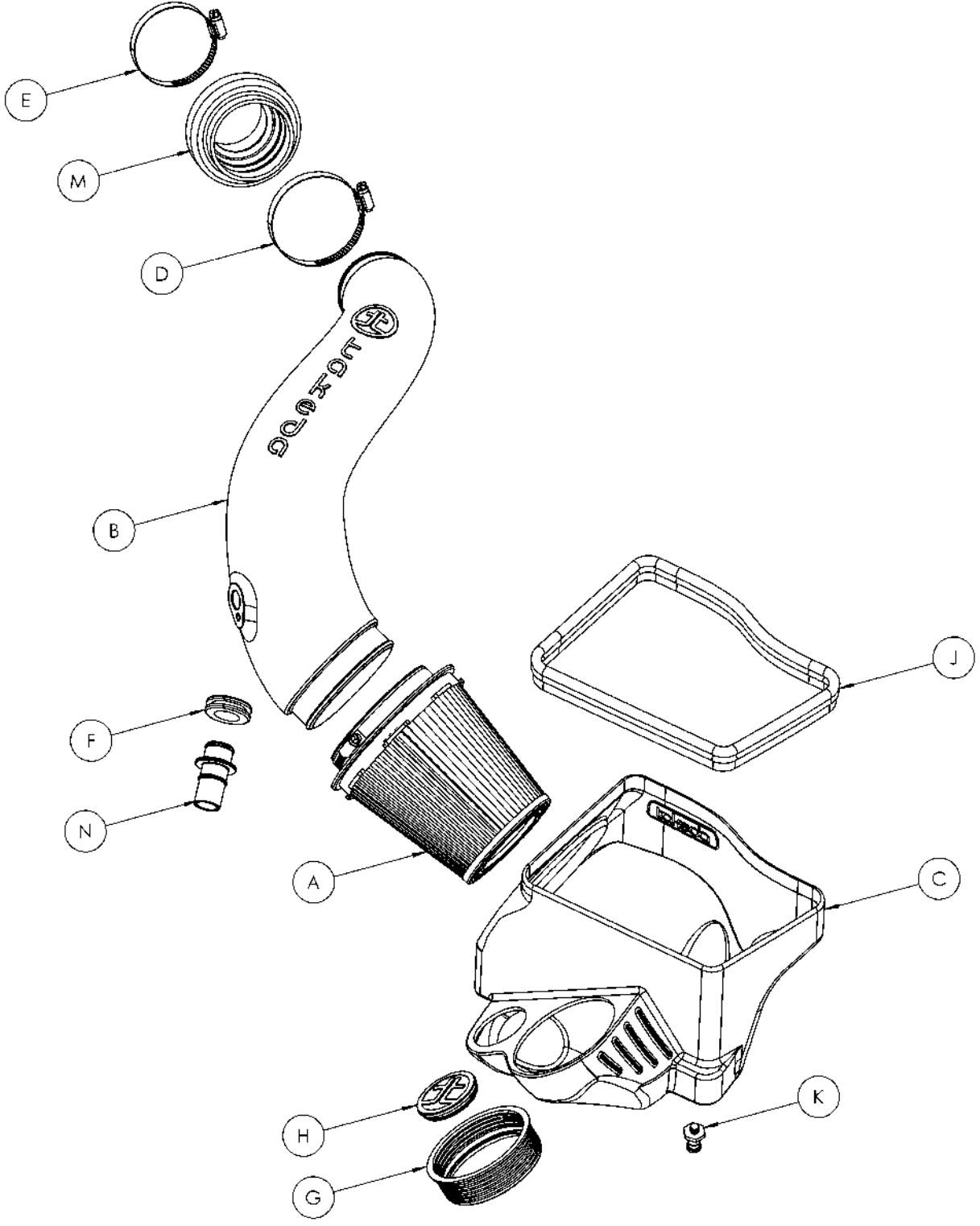
Label	Qty.	Description	Part Number
A	1	Air Filter (Pro DRY S) For 56-70071D	21-91144
A	1	Air Filter (Pro 5R) For 56-70071R	24-91144
B	1	Tube	05-5070073B1
C	1	Housing	05-5070073B2
D	1	Clamp, 048 (2-9/16" – 3-1/2")	03-50007
E	1	Clamp, 044 (2-5/16" – 3-1/4")	05-50019
F	1	Grommet, Rubber	03-50139
G	1	Sleeve, Adaptor	05-01308
H	1	Plug, Sil: 2.25" Dia x 0.16" THK (Takeda)	05-01527
J	1	Seal, Trim Double Bulb (32" Length)	05-01534
K	1	Mount, Aluminum: M8 x 1.2 x 7	05-01547
M	1	Coupler, Silicone Bellow: (2-1/2 x 3)"ID x 3"L	05-01736
N	1	Fitting, Recirculating, 1"	05-01823

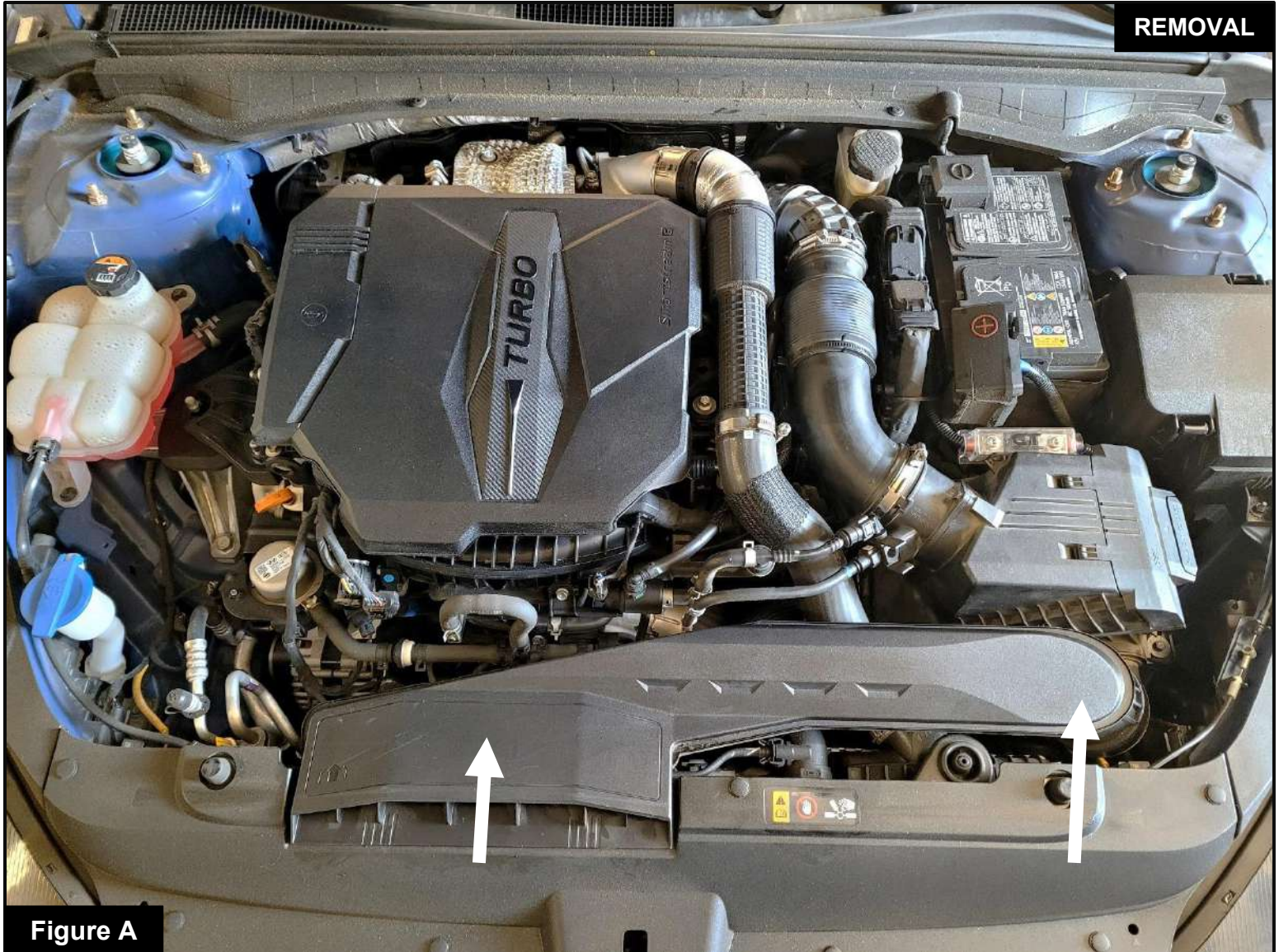
Installation will require the following tools:

Socket Set, Torx Set, Extensions, Ratchet wrench, Pliers, Wrench set

Warranty Information available at: <https://afepower.com/warranty>

Emissions Disclaimer: This product is not currently CARB exempt and is not available for purchase in California or for use on any vehicle registered with the California Department of Motor Vehicles. CARB exemption applications can take time to process, please contact us or visit our website for the latest updates on its status.



**Figure A****Refer to Figure A for Step 1**

Step 1: Remove the factory air scoop by pulling it straight upward. Release the front end first, then lift the end that connects to the factory air box.



Figure B

Refer to Figure B for Steps 2-3

Step 2: Disconnect both ejector fitting quick-connect hoses by pressing the side release tabs and pulling the fittings straight off.

Step 3: Disconnect the recirculation quick-disconnect hose located at the bottom of the factory intake tube by pressing the release tabs on both sides and pulling the hose straight out; you may need to reach around the intake tube with both hands for better access.

REMOVAL

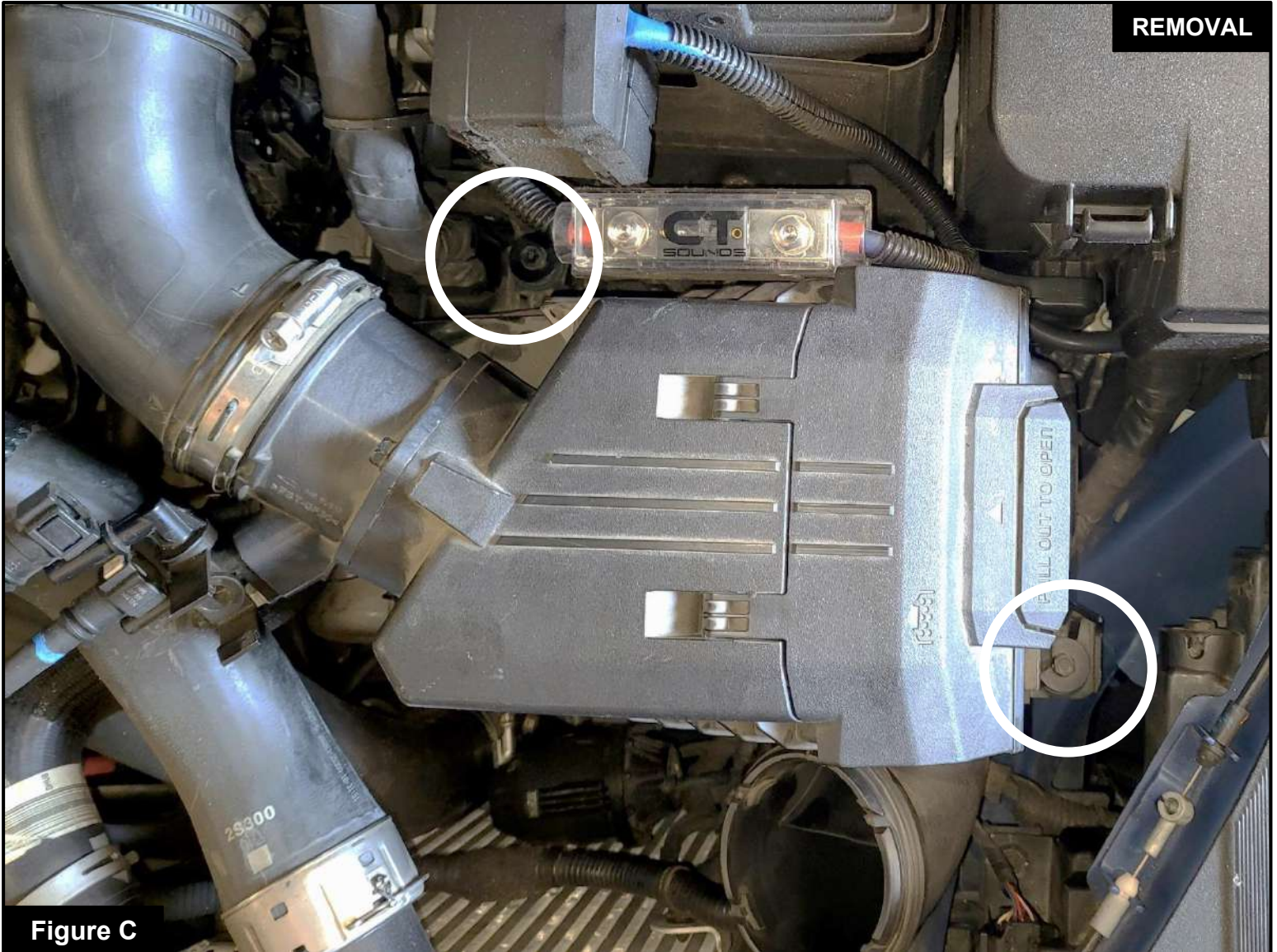


Figure C

Refer to Figure C for Step 4

Step 4: Use a 10mm socket with an extension to remove the screws securing the factory air box. Screws will be reused during installation.

**Figure D****Refer to Figure D for Step 5**

Step 5: Use a 10mm socket wrench to loosen the hose clamp closest to the firewall, which secures the factory intake tube to the turbo inlet.



Figure E

Refer to Figure E for Step 6

Step 6: Carefully remove the factory tube and air box from the vehicle. If the rubber adapter does not come off with the tube, remove it from the turbo inlet separately.



Figure F

Refer to Figure F for Steps 7-8

Step 7: Transfer the rubber bump stop from the factory air box to the **TAKEDA** housing.

Step 8: Transfer the rubber isolation mount and metal insert from the factory air box to the **TAKEDA** housing.

**Figure G****Refer to Figure G for Step 9**

Step 9: Use a 3/4" wrench to install the provided aluminum mount onto the **TAKEDA** housing.
(Aluminum mount shown without black anodized finish for clarity.)



Figure H

Refer to Figure H for Steps 10-11

Step 10: Install the provided rubber grommet and recirculation fitting into the **TAKEDA** intake tube with the long end of the fitting facing outward.

Step 11: Use a 10mm driver or socket wrench to remove the ejector assembly from the factory housing and transfer it onto the **TAKEDA** intake tube. Secure it using the factory screw.

At this time, inspect the O-ring to make sure it has not fallen off and is not cracked, as this could lead to installation issues or air leaks.

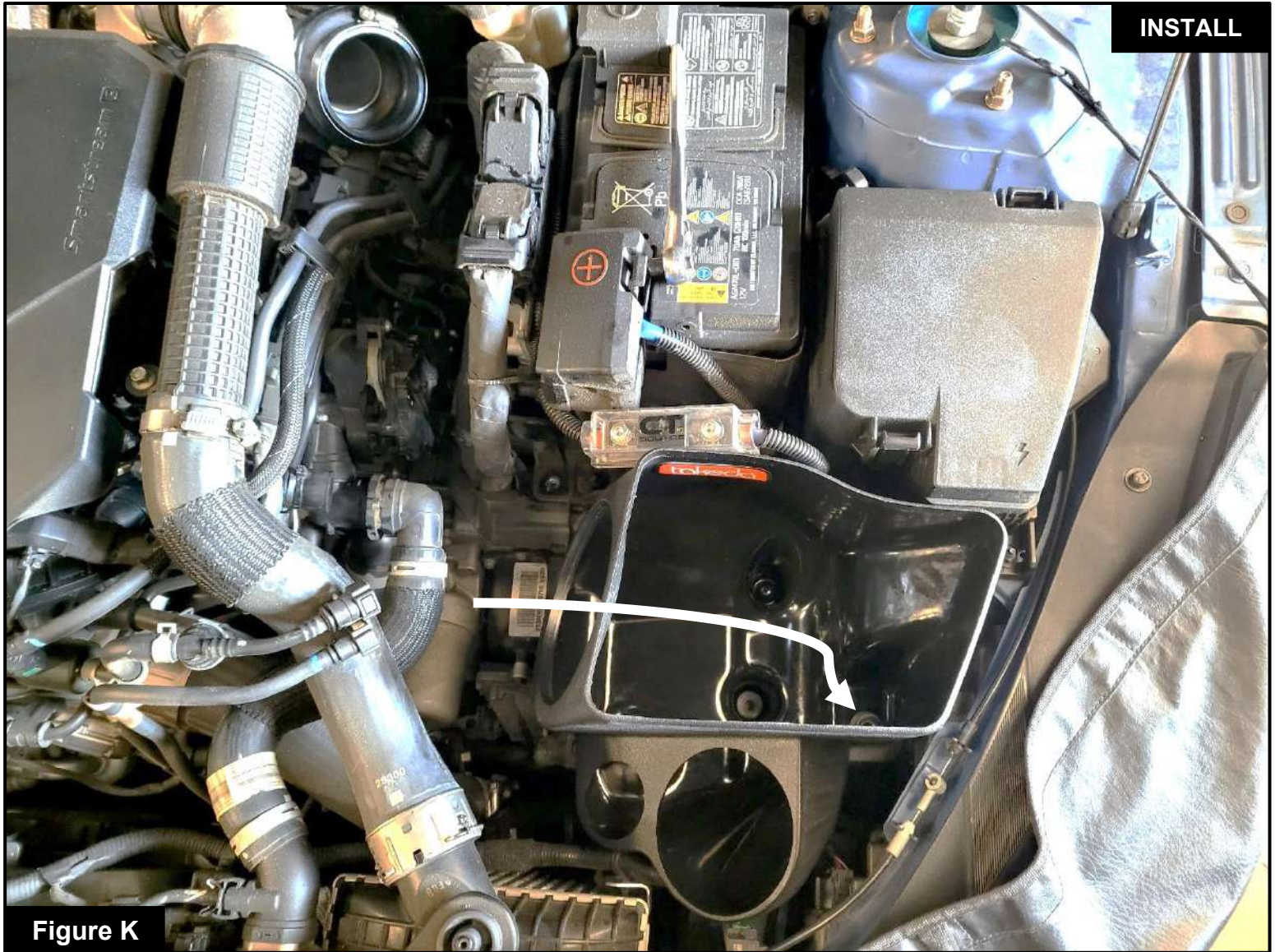


Figure J

Refer to Figure J for Steps 12-13

Step 12: Install the provided **aFe POWER** silicone coupler and **#44** clamp onto the turbo inlet, then tighten the clamp securely.

Step 13: Install the **#48** clamp onto the coupler, but do not tighten it at this time.



Refer to Figure K for Steps 14-15

Step 14: Install the **TAKEDA** housing into the vehicle, making sure the aluminum mount seats properly into the mounting grommet

Step 15: Use one of the 10mm screws removed in **Step 3** to secure the **TAKEDA** housing. The screw installs from inside the **TAKEDA** housing.

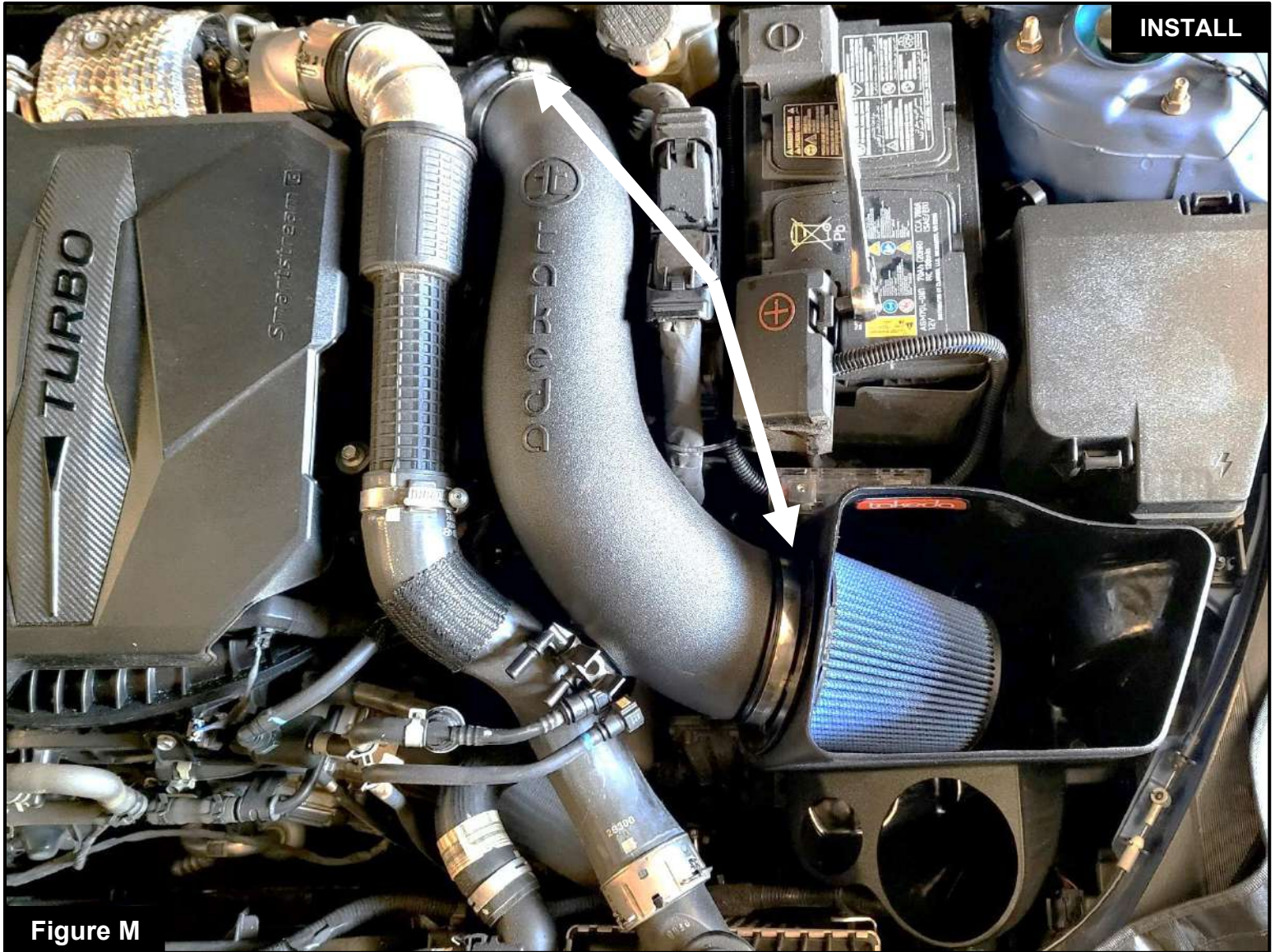


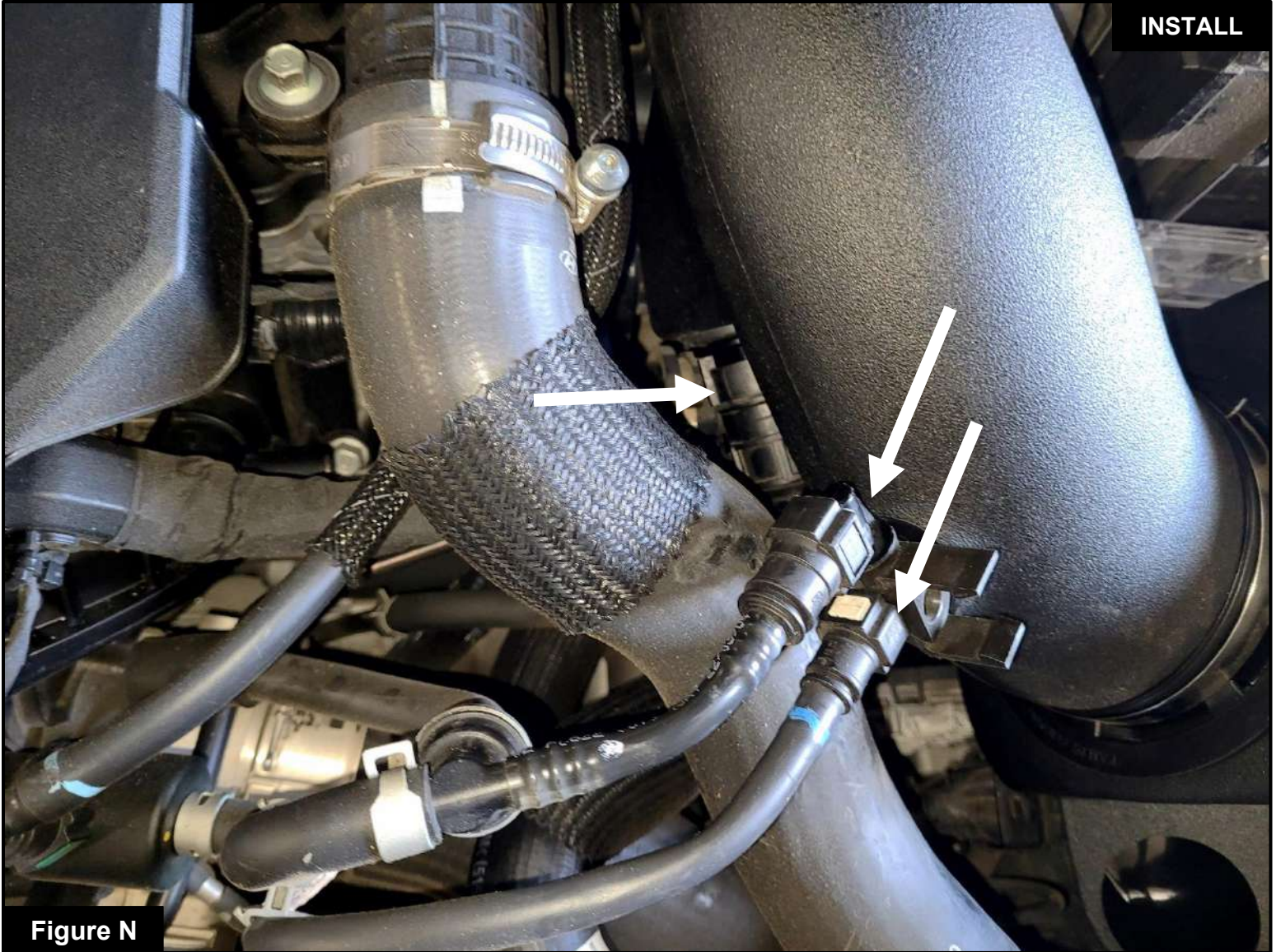
Figure M

Refer to Figure M for Steps 16-18

Step 16: Install the **aFe POWER** air filter with clamp into the **TAKEDA** housing, making sure the locking tabs engage securely. The filter should be able to rotate freely in place without coming off. Do not tighten filter clamp at this time.

Step 17: Install the **TAKEDA** intake tube by sliding it into the air filter first, then into the silicone coupler.

Step 18: Use an 8mm driver or socket wrench to tighten the clamp on the air filter and the clamp on the silicone coupler, securing the **TAKEDA** intake tube in place.

**Figure N****Refer to Figure N for Steps 19-20**

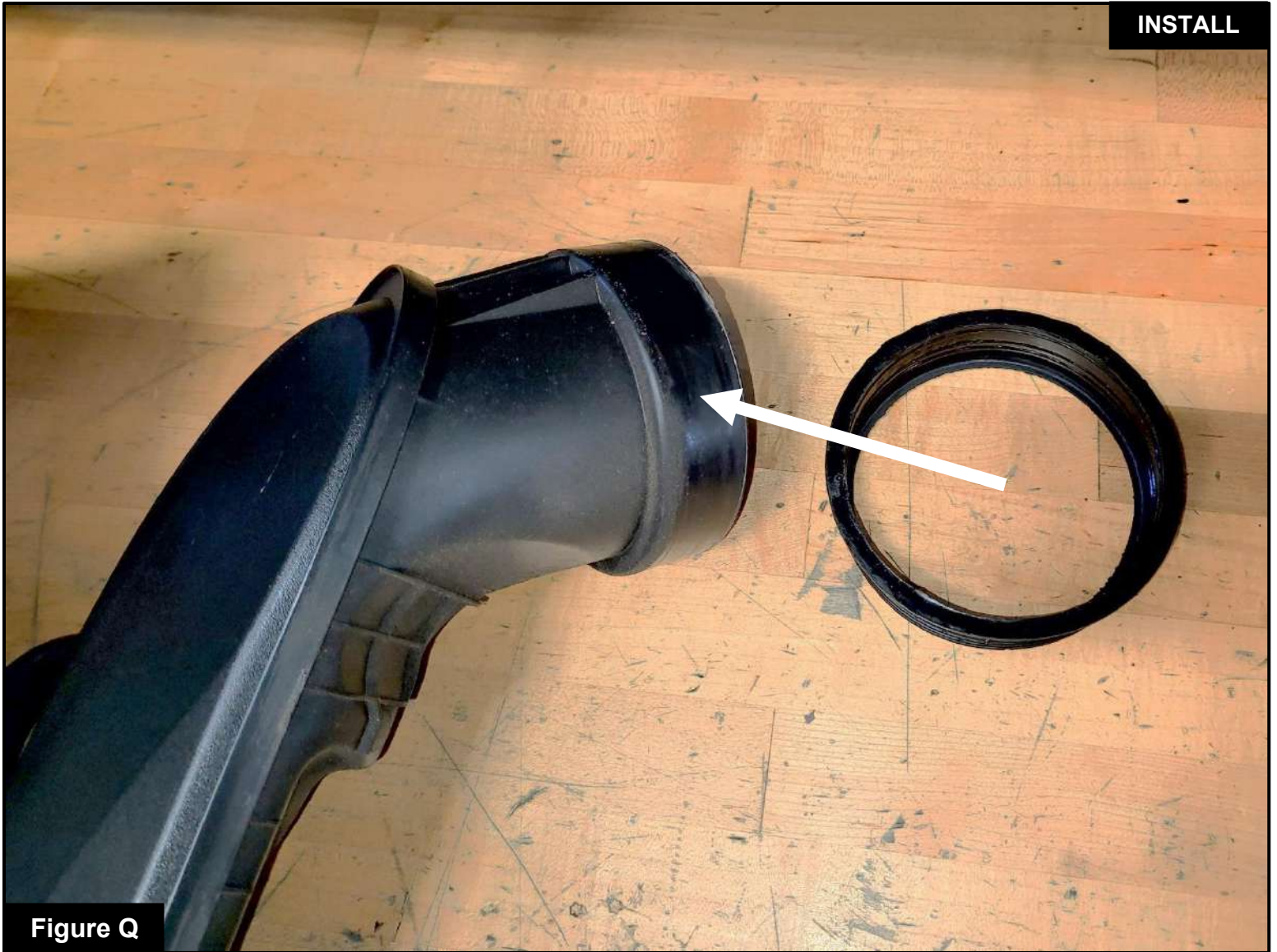
Step 19:Reconnect the recirculation quick-disconnect hose by pushing it straight onto the fitting at the bottom of the **TAKEDA** intake tube until the release tabs click securely into place.

Step 20:Reconnect both quick-connect hoses to the ejector fitting until the side tabs click securely into place.

**Figure P****Refer to Figure P for Step 21**

Step 21: Install the **TAKEDA** plug. The kit includes an optional plug to close off the auxiliary air inlet.

- Without the plug installed, the **TAKEDA** intake will capture the maximum amount of air available. More airflow can lead to increased power, but some of this air may come from inside the engine compartment and could be warmer, potentially affecting vehicle performance.
- Installing the plug on the housing will block out hot engine air, ensuring that only the coolest air is directed into the engine. This will also help reduce intake noise.

**Figure Q****Refer to Figure Q for Step 22**

Step 22: Install the provided aFe **POWER** sleeve adaptor onto the factory air scoop, making sure the scoop end seats fully against the inside edge of the adapter for an even, secure fit.

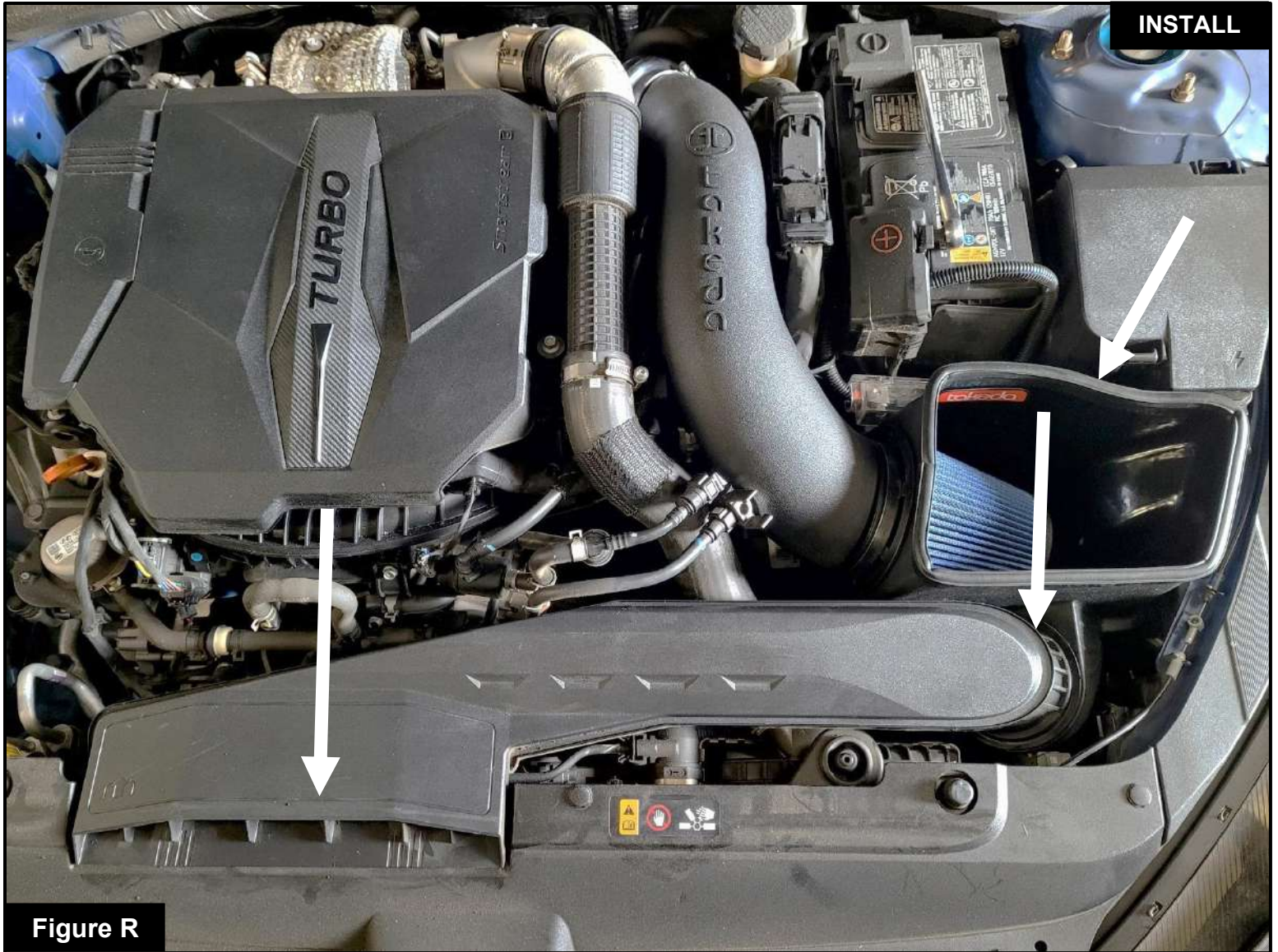


Figure R

Refer to Figure R for Steps 23-24

Step 23: Install the factory air scoop into the **TAKEDA** housing first, making sure the coupler flange sits flush with the housing. Do not push the scoop in too far, as this can cause poor fitment. Then firmly press the front section of the air scoop back into the front grommets

Step 24: Install the provided seal trim onto the top edge of the **TAKEDA** housing.



Your installation is now complete. Thank you for choosing TAKEDA USA!

NOTE: Check to ensure that all screws, clamps, and connectors are secure after 100-200 miles.



advanced FLOW engineering, inc.

Corona, CA 92879

<https://afepower.com/contact-us>