

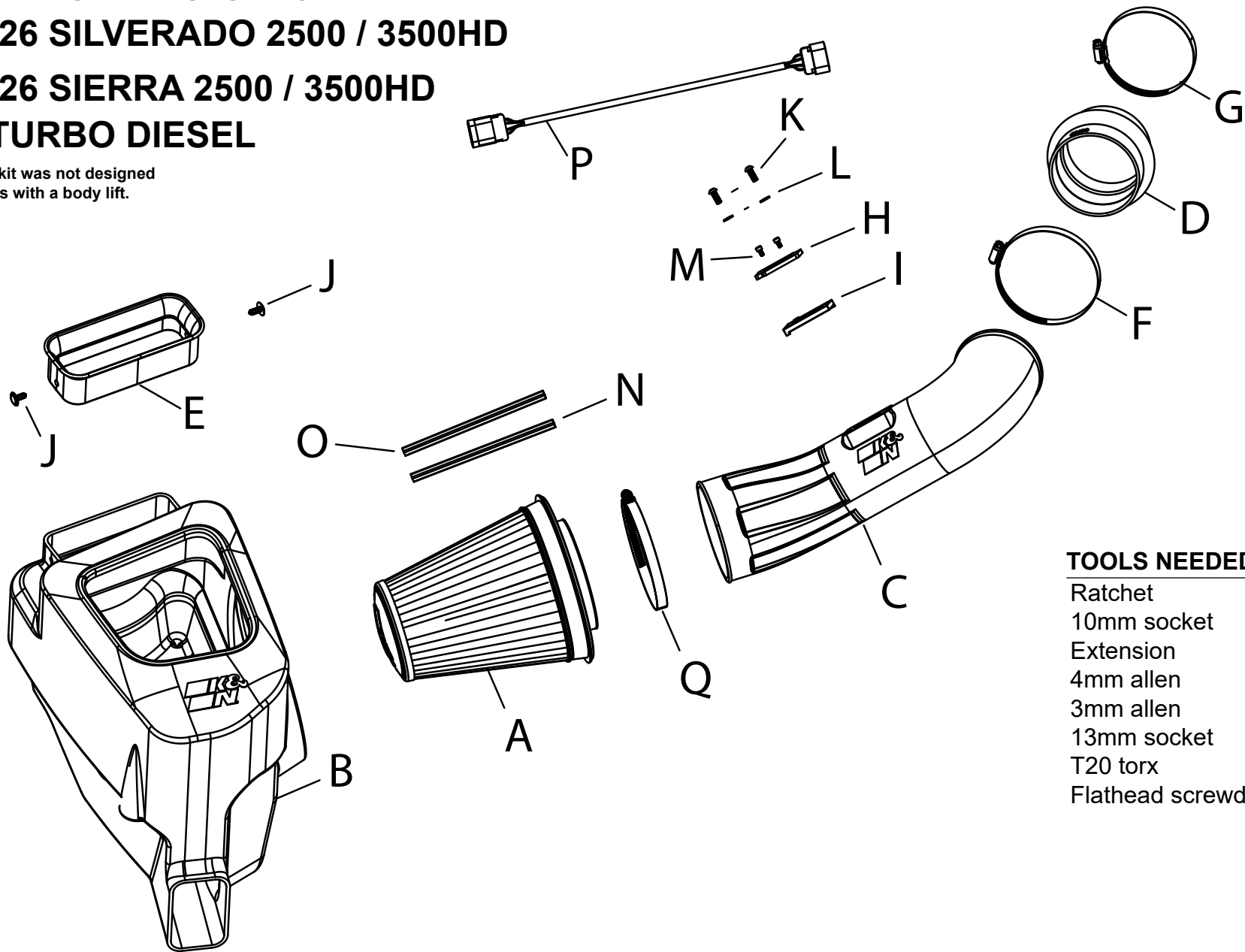


# INSTALLATION INSTRUCTIONS

Not legal for sale or use in California on any pollution controlled motor vehicle.

## 50-3119D CHEVROLET / GMC 2020-26 SILVERADO 2500 / 3500HD 2020-26 SIERRA 2500 / 3500HD 6.6L TURBO DIESEL

NOTE: This kit was not designed to fit vehicles with a body lift.



### TOOLS NEEDED:

- Ratchet
- 10mm socket
- Extension
- 4mm allen
- 3mm allen
- 13mm socket
- T20 torx
- Flathead screwdriver

### PARTS LIST:

Description	Qty.	Part #	Description	Qty.	Part #	Description	Qty.	Part #
A AIR FILTER DRY DIESEL	1	RU-3138HBK	G HOSE CLAMP; #64 BLK	1	08645KA	M BOLT; M4-.7 X 8MM	2	07733
B AIR BOX	1	087656	H MAF ADAPTOR, NYLON	1	21515-1	N CLIP; SNAP-ON, RED	1	088220
C TUBE	1	087657	I GASKET, PORON	1	09069	O CLIP; SNAP-ON, ORANGE	1	088221
D HOSE; HUMP 4"X 4.19" X 3"L	1	08633	J RIVET; TUFLOK	2	345010	P EXTENSION HARNESS; GM	1	21788
E HOOD SEAL; FIPK	1	084112	K BOLT; M6 X 1 X 16MM	2	07730	Q HOSE CLAMP; #88 BLK	1	KITHS88K
F HOSE CLAMP; #72 BLK	1	08671KA	L WASHER; 6MM FLAT, SS	2	08269			

If you need any assistance please call 1-800-858-3333 to speak with a representative in our Customer Service Center before returning the product.

NOTE: FAILURE TO FOLLOW INSTALLATION INSTRUCTIONS AND NOT USING THE PROVIDED HARDWARE MAY DAMAGE THE INTAKE TUBE, THROTTLE BODY AND ENGINE.

### TO START:

1. Turn off the ignition and disconnect the negative battery cable.  
**NOTE: Disconnecting the negative battery cable erases pre-programmed electronic memories. Write down all memory settings before disconnecting the negative battery cable. Some radios will require an anti-theft code to be entered after the battery is reconnected. The anti-theft code is typically supplied with your owner's manual. In the event your vehicles anti-theft code cannot be recovered, contact an authorized dealership to obtain your vehicles anti-theft code.**



2. Release the locking tab and then disconnect the mass air sensor electrical connection.



3. Remove the nut that secures the intake plenum to the engine.



4. Loosen the hose clamps that secure the intake tube to the turbo inlet and the air filter housing outlet, then remove the factory intake tube assembly from the vehicle.



7. Install the MAF sensor assembly into the intake tube and secure using provided hardware. Secure and tighten. **NOTE: Make sure the sensor is going in the correct direction.** If it is not installed in the correct orientation, remove the adapter bolts and spin 180 degrees then reinstall the bolts.



10. Attach the filter clips to the pleats on the air filter align and push down. Passenger side filters, place orange clip on top and red on bottom.



5. Remove the nut that secures the factory air filter housing to the inner fender, then remove the housing from the vehicle. This nut will be reused. **NOTE: K&N Engineering, Inc., recommends that customers do not discard factory air intake.**



8. Install the fresh air inlet seal onto the K&N air filter housing and secure with the provided retaining clips.



11. Install the K&N air filter into the housing as shown.



6. Install the provided gasket onto the K&N® MAF sensor adapter. Remove the MAF sensor from the factory housing and install it into the MAF sensor adapter and secure with the provided hardware.



9. Install the K&N air filter housing into the vehicle and secure with the factory mounting nut.



12. Install provided hump coupler onto the turbo inlet with the provided hose clamps.





13. Install the K&N intake tube into the filter and then into the coupler at the turbo inlet, adjust the tube for best fit and then secure with the provided hose clamps.



14. Connect the provided mass air sensor harness extension onto the mass air sensor and then connect the open end to the factory harness.



15. Reconnect the vehicle's negative battery cables. Double check to make sure everything is tight and properly positioned before starting the vehicle.

16. It will be necessary for all K&N® high flow intake systems to be checked periodically for realignment, clearance and tightening of all connections. Failure to follow the above instructions or proper maintenance may void warranty.

**ROAD TESTING:**

1. Start the engine with the transmission in neutral or park, and the parking brake engaged. Listen for air leaks or odd noises. For air leaks secure hoses and connections. For odd noises, find cause and repair before proceeding. This kit will function identically to the factory system except for being louder and much more responsive.
2. Test drive the vehicle. Listen for odd noises or rattles and fix as necessary.
3. If road test is fine, you can now enjoy the added power and performance from your kit.
4. K&N Engineering, Inc., requires cleaning the intake system's air filter element every 50,000 miles. When used in dusty or off-road environments, our filters will require cleaning more often. We recommend that you visually inspect your filter once every 25,000 miles to determine if the screen is still visible. When the screen is no longer visible some place on the filter element, it is time to clean it. To clean, purchase our Synthetic Filter Cleaner, part number 99-0624 and follow the easy instructions.