

# INSTALLATION GUIDE

TRANSMISSION COOLER, FITS 2010-2024 TOYOTA 4RUNNER  
SKU: MMTC-4RUN-10

## TABLE OF CONTENTS

1. RESOURCES & CONTACT INFO
2. EXPLODED VIEW
3. IMPORTANT SAFETY INFORMATION  
INSTALL TIME & DIFFICULTY  
REQUIRED TOOLS
7. DISPOSAL & WARRANTY INFORMATION

## RESOURCES & CONTACT



**CALL 1.877.466.4744**

CUSTOMER SERVICE HOURS: MON-FRI 9:00AM-7:00PM EST



**@MISHIMOTO**



**@GOMISHIMOTO**



**MISHIMOTO**

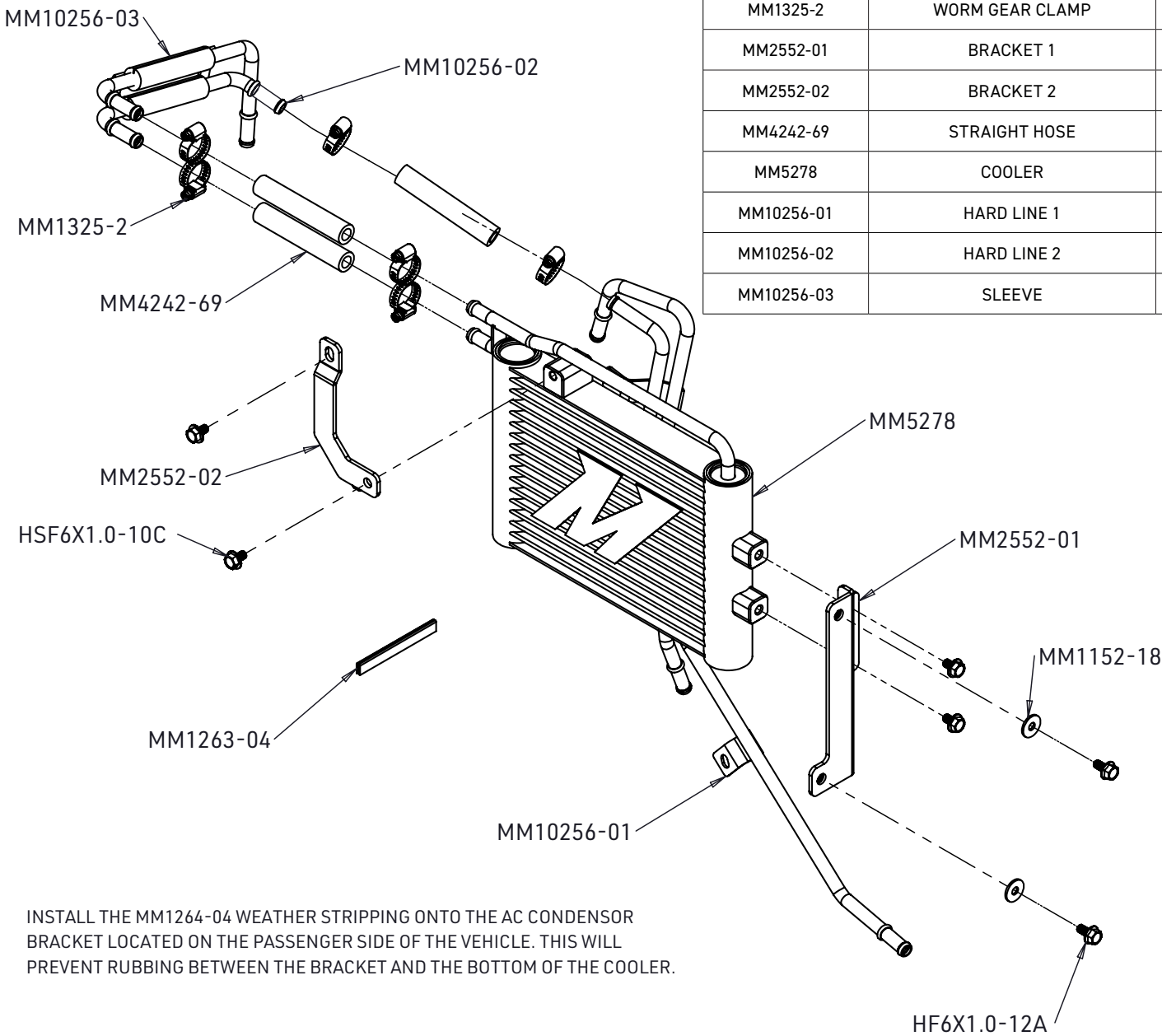


**@MISHIMOTO**



**ENGINEERING BLOG**

[WWW.MISHIMOTO.COM/ENGINEERING](http://WWW.MISHIMOTO.COM/ENGINEERING)



### PARTS BREAKDOWN

PART NUMBER	DESCRIPTION	QTY
HF6X1.0-12A	HEX HEAD FLANGED BOLT	2
HSF6X1.0-10C	HEX HEAD SERATED BOLT	4
MM1152-18	FLAT WASHER	2
MM1264-04	WEATHER STRIPPING	1
MM1325-2	WORM GEAR CLAMP	6
MM2552-01	BRACKET 1	1
MM2552-02	BRACKET 2	1
MM4242-69	STRAIGHT HOSE	3
MM5278	COOLER	1
MM10256-01	HARD LINE 1	1
MM10256-02	HARD LINE 2	1
MM10256-03	SLEEVE	2

INSTALL THE MM1264-04 WEATHER STRIPPING ONTO THE AC CONDENSOR BRACKET LOCATED ON THE PASSENGER SIDE OF THE VEHICLE. THIS WILL PREVENT RUBBING BETWEEN THE BRACKET AND THE BOTTOM OF THE COOLER.

Continued on next page

## IMPORTANT SAFETY INFORMATION

- › Mishimoto recommends you use safety glasses and protective gloves during the installation of our products
- › Raise vehicle only on jack stands or on a vehicle lift
- › Allow vehicle to cool completely prior to attempting installation
- › Do not run the engine or drive the vehicle while overheating; serious damage can occur
- › Please dispose of any liquids properly
- › Mishimoto is not responsible for any vehicle damage or personal injury due to installation errors, misuse, or removal of Mishimoto products
- › If you need any assistance while installing our products, reach out to our Customer Service Team at 1.877.466.4744

## PARTS

1X TRANSMISSION COOLER	1X WEATHER STRIPPING
2X TRANSMISSION FLUID HARDLINES	6X HIGH-TORQUE WORM GEAR CLAMPS
2X MOUNTING BRACKETS	2X FLAT WASHERS
3X STRAIGHT HOSE SECTIONS	2X 12MM LENGTH BOLTS
2X RUBBER PIPE SLEEVES	4X 10MM LENGTH BOLTS

## REQUIRED TOOLS

7MM SOCKET	PLASTIC TRIM PANEL REMOVAL TOOLS
10MM SOCKET	1/4" OR 3/8" DRIVE RATCHET AND EXTENSIONS
PLIERS	

**INSTALL TIME: 3 HOURS**

**INSTALL DIFFICULTY:**     

## INSTALLATION INSTRUCTIONS

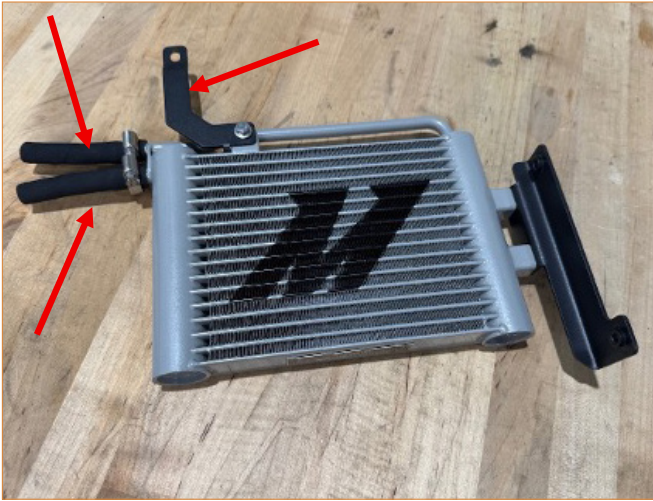
1. Allow the vehicle to cool completely. Raise the vehicle on a lift or jack stands.
2. Remove the radiator support cover trim.
3. NOTE: This installation can be accomplished without removing the front bumper cover and fan shroud, but it can get a little tight.
3. Remove the front bumper cover and lower cover (or skid plate if equipped).
4. If removing the fan shroud from the vehicle, you will need to drain some of the coolant to remove the upper radiator hose, overflow tank, and ultimately the fan shroud.
5. Disconnect the factory transmission cooler lines.
5. Remove the fan and fan shroud with the factory transmission hardlines attached.
6. Remove the two 10mm bolts holding the factory transmission hardlines onto the fan shroud and replace them with the included Mishimoto hardlines. Install the Mishimoto hardlines in the same orientation as stock and using the factory mounting hardware. You will also want to transfer over the factory hose pieces and the clamps that secure them in place to their respective locations on the Mishimoto hardlines.



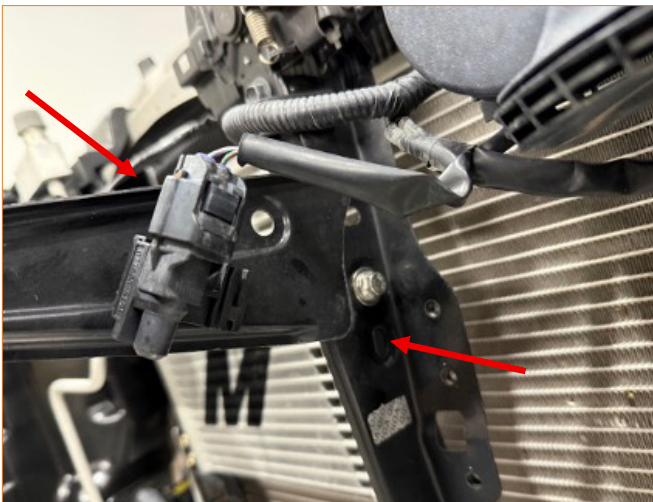
Continued on next page



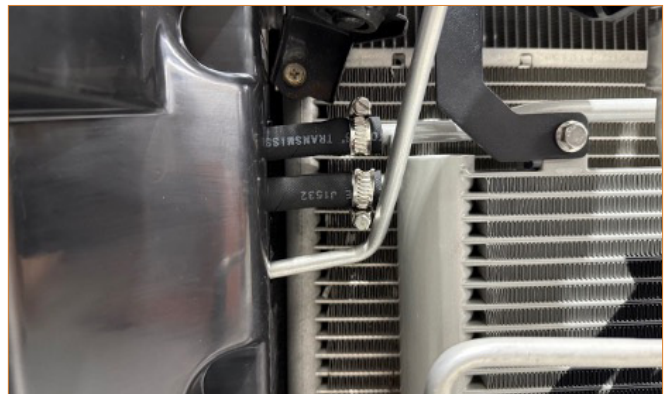
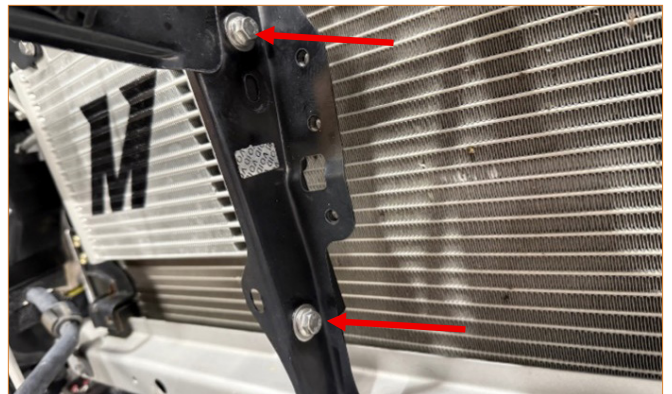
**7.** Attach the brackets to the Mishimoto transmission cooler using the three 10mm length bolts, one for the top bracket and two for the side bracket. Now is also a good time to attach and secure two of the included straight hoses to the transmission cooler using two of the included worm gear clamps.



**8.** You may or may not need to relocate the ambient air temperature depending on your vehicle. Ensure that it is installed in the location shown. NOTE: Some vehicles have this sensor mounted towards the bottom of the radiator; this location is fine as well.

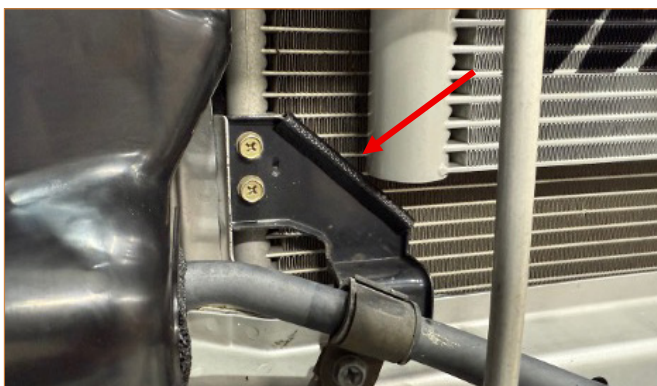


**9.** Install the Mishimoto transmission cooler into the vehicle and secure using one of the included 10mm length bolts for the top and a washer and 12mm length bolt for each of the side mounting locations. Feed the hoses through the existing hole in the radiator trim piece.



Continued on next page

**10.** The included weather stripping can be installed onto the condenser bracket as shown to prevent contact between the transmission cooler and bracket if necessary.



**11.** Re-install the fan shroud with the Mishimoto transmission hardlines attached.

**12.** Re-connect the lower transmission cooler lines.

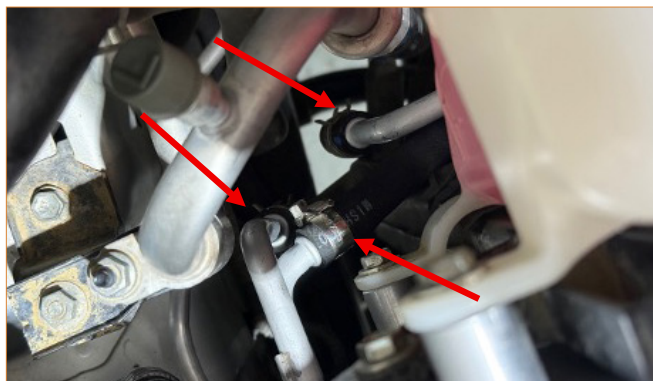
**13.** Attach the rubber pipe sleeves onto the remaining shorter hardlines. You can also attach the remaining straight hose using one of the included worm gear clamps.



**14.** Install the shorter hardlines into the vehicle utilizing two of the included worm gear clamps. These should pass through an existing hole in the body. **NOTE:** You may need to remove or cut a piece of foam that closes this hole.



**15.** Attach both hardlines utilizing the remaining worm gear clamp and reattach the transmission cooler lines to the hardlines using the stock hardware.



Continued on next page

**16.** Follow the refill procedure and add additional transmission fluid to account for any fluid that was lost during the installation as well as the additional capacity of the Mishimoto transmission cooler.

**17.** Reinstall any components removed and ensure that everything has been tightened before starting the vehicle.

**18.** Start the vehicle and allow it to reach operating temperature while checking for leaks.

**19.** Congratulations, the Mishimoto 4Runner transmission cooler installation is complete.

Continued on next page



## DISPOSAL INSTRUCTIONS

- › Do not dispose of any product as unsorted municipal waste. Use separate collection facilities. Contact your local authority for information regarding the collection systems available.
- › Never improperly dispose of any coolant, oil, or other chemicals

## WARRANTY INFORMATION



- › All claims must be accompanied with a picture of the Mishimoto product showing the issue for which the claim is being submitted.
- › Mishimoto asks that the customer inspect their purchased item for any damage immediately upon arrival.
- › Any product deemed dead on arrival (DOA) must be claimed within 14 business days of delivery. Claims outside of this time frame will not be covered under the Mishimoto Lifetime Warranty.
- › This warranty does not include payment and/or reimbursement of the cost of labor in connection with the removal of any product returned pursuant to the warranty policy or in connection with the installation of any replacement items provided under the warranty policy.
- › Mishimoto has the right to refuse a claim at any time.

- › When Mishimoto accepts a claim, Mishimoto retains full discretion to choose if it will: (i) repair or replace purchaser's original Mishimoto product; (ii) replace purchaser's original Mishimoto product with the most current available model; or (iii) provide the purchaser with a gift card redeemable on **Mishimoto.com** in the amount of the original purchase price of the original Mishimoto product. The provision of a replacement of a Mishimoto product is subject to availability and Mishimoto retains the right to substitute any warranty claim item with a comparable item or credit at any time.
- › If Mishimoto determines that it will provide a replacement item in connection with a claim under this warranty policy, and such item is out of stock, Mishimoto will place the customer on backorder and ship the replacement product to the purchaser once it becomes available.
- › Mishimoto is not liable for incorrect shipments in connection with a claim if a claim form is completed incorrectly, or if a model number is not included in a claim.
- › If you have a vehicle equipped with an automatic transmission, please make sure to specify this within the text box on the claim form. Mishimoto is not responsible for incorrect replacement shipments if transmission type is not indicated.



**WARNING**  
Cancer and  
Reproductive Harm  
[www.P65Warnings.ca.gov](http://www.P65Warnings.ca.gov)

- › This product can expose you to chemicals which are known to the state of California to cause cancer. For more information visit:  
[www.p65warnings.ca.gov](http://www.p65warnings.ca.gov)