



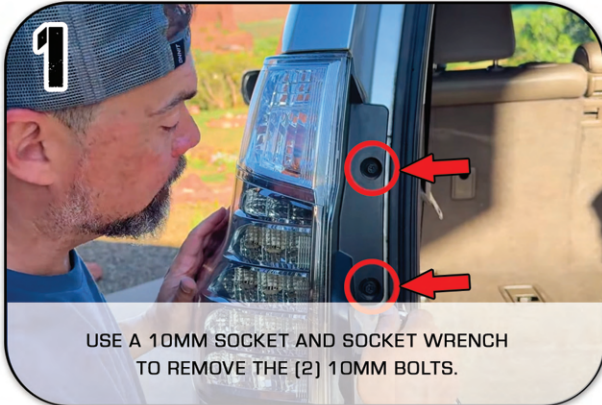
# ORACLE LIGHTING

## GX460 FLUSH TAIL LIGHTS ORACLE PART #5931 INSTALLATION GUIDE

**TOOLS NEEDED:**  
10MM SOCKET  
SOCKET WRENCH



SCAN TO VIEW INSTALL VIDEO



USE A 10MM SOCKET AND SOCKET WRENCH TO REMOVE THE (2) 10MM BOLTS.



WITH A FIRM PULL BACKWARDS, DISENGAGE THE OEM TAIL LIGHT.



DISCONNECT THE FACTORY TAIL LIGHT PLUG FROM THE FACTORY HARNESS.



MOUNT THE INCLUDED RESISTOR TO THE STRUCTURAL SURFACE AT THIS LOCATION.



THE REVERSE LIGHT PLUGS WILL BE FED DOWNWARDS TOWARDS THE BACK OF THE REVERSE LIGHT.



PLUG IN THE ORACLE TAIL LIGHT HARNESS TO THE FACTORY HARNESS. MAKE SURE THE RESISTOR IS PLUGGED IN AS WELL.



WHEN INSTALLING THE ORACLE TAIL LIGHT, PINS REFERENCED WITH THE ARROW WILL FIT IN THE SLOTS MARKED WITH THE CIRCLES.



WITH EVERYTHING CONNECTED AND WIRES RUN, YOU CAN NOW INSTALL THE ORACLE TAIL LIGHT. RE-TIGHTEN THE (2) 10MM BOLTS.



# ORACLE LIGHTING

## GX460 FLUSH TAIL LIGHTS ORACLE PART #5931 INSTALLATION GUIDE

**TOOLS NEEDED:**  
10MM SOCKET  
SOCKET WRENCH

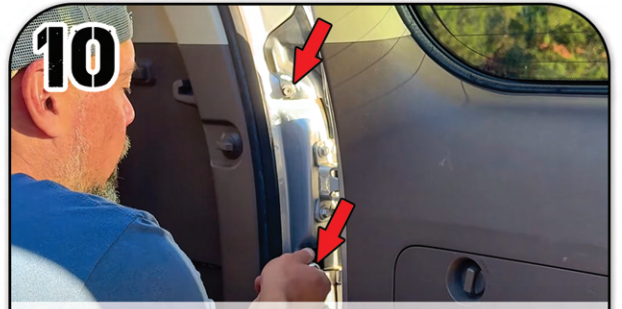


SCAN TO VIEW INSTALL VIDEO



9

UNDERNEATH THE REAR BUMPER, CONNECT THE REVERSE LIGHT WIRES FROM THE TAIL LIGHT TO THE REVERSE LIGHT MODULE.



10

MOVE TO THE PASSENGER SIDE, LOCATE THESE (2) 10MM BOLTS AND REMOVE.



11

REPEAT THE SAME PROCESS AS STEP 2



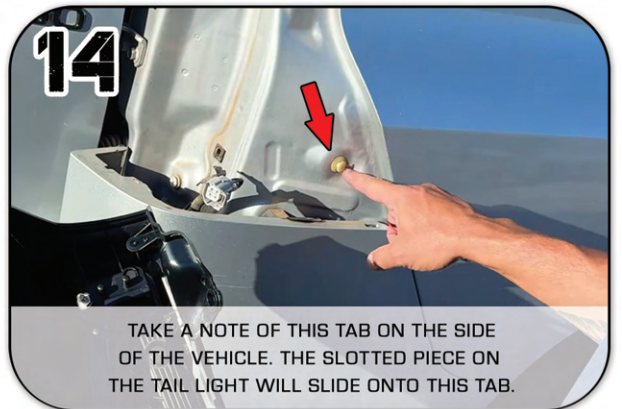
12

DISCONNECT THE FACTORY TAIL LIGHT PLUG FROM THE FACTORY HARNESS.



13

REMEMBER THE PINS ON THE TAIL LIGHTS WITH FIT IN THESE TWO SLOTS.



14

TAKE A NOTE OF THIS TAB ON THE SIDE OF THE VEHICLE. THE SLOTTED PIECE ON THE TAIL LIGHT WILL SLIDE ONTO THIS TAB.



15

CLOSE UP OF THE SLOTTED PORTION ON THE ORACLE TAIL LIGHT.



16

REPEAT STEPS 4-9 TO COMPLETE YOUR TAIL LIGHT INSTALL.