

# Installation Instructions

Eibach Inc. 264 Mariah Circle Corona, CA 92879  
USA Tech Support 800-507-2338 ext. 114



## PRO-UTV: E85-209-039-02-22

(14-16) RZR XP 4 1000

### Notes

Stage 2 performance kit

Fits vehicles equipped with Walker Evans Shocks

Ride heights based off a 32" tire.

### Kit Contents

Description	Part Number	Quantity
FRONT SECONDARY SPRING	0600.300.0300S	2
FRONT MAIN SPRING	1000.300.0350S	2
REAR SECONDARY SPRING	1200.300.0200S	2
REAR MAIN SPRING	1800.300.0300S	2
HARDWEAR		
FRONT SPRING SLIDER	8001100	2
REAR SPRING SLIDER	8001498	2
REAR CROSSOVER RING	8001063	2

### Installation Notes

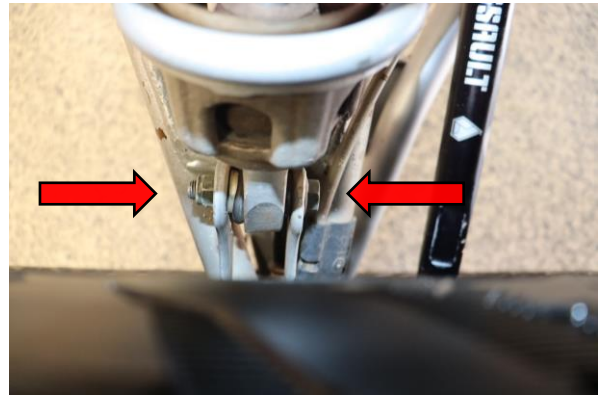
#### Read all instructions before beginning installation

- Only qualified mechanics experienced in the installation and removal of suspension components should perform this installation.
- Use of a hoist and screw jack is highly recommended and will substantially reduce installation time.
- Never work on or under a vehicle unless it is properly supported by safety stands and wheels are blocked.
- Never use impact wrenches or impact guns to install or remove shock absorber piston components, shafts and Piston rod nuts.
- All Eibach springs should be installed with the Eibach logo right-side-up.
- After Installation, inspect and adjust the following: Wheel Alignment; tire/wheel fender clearance when using aftermarket wheels or tires; brake line clearance and attachments; anti-lock-brake system sensors.

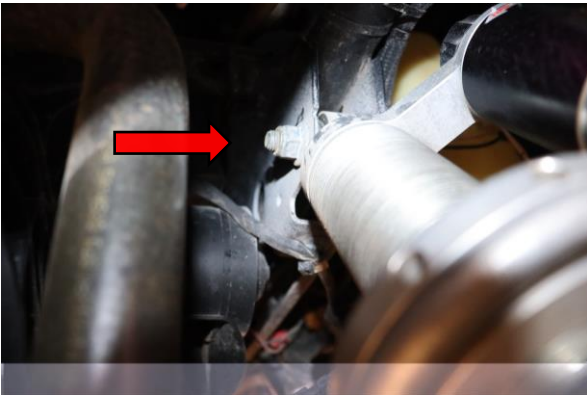
## FRONT INSTALLATION



Step 1. Raise the front of the vehicle and support it with the proper safety equipment. **Note: Never work on or under a vehicle that is not supported by the proper safety equipment.**



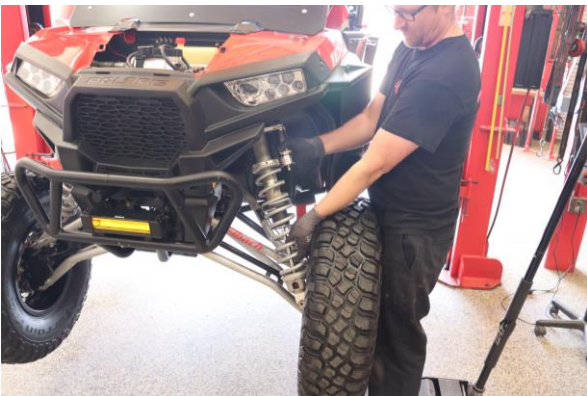
Step 2. Remove lower shock mount nut using two 15mm.



Step 3. Remove upper shock mount nut using two 15mm.



Step 4. Use a strap between the lower control arm and the frame to prevent damage to the axle from over extension.



Step 5. Lift slightly on the wheel and tire to remove the lower shock mounting bolt. Allow the lower control arm to rest against the strap. Remove the upper shock mounting bolt. Rotate shock out of upper and lower mounts and remove from the vehicle.



Step 6. Use a spring compressor to compress the shock assembly. Push the lower bump stop down enough that the lower spring retainer can clear the lower shock mount. **Note: The bump stop may not move easily and could need the use of pry bars to move down the shock shaft. Be careful to not mar the shock shaft.**

## FRONT INSTALLATION



Step 7. Remove the lower spring perch.  
Decompress the spring assembly.



Step 8. Remove the OE main spring.



Step 9. Remove the OE spring slider.



Step 10. Remove the OE tender spring.



Step 11. Adjust the upper spring perch to **115mm (4 1/2")** measuring from the spring seat to the bottom of the bridge collar to set spring preload.



Step 12. Install Eibach front tender spring

## FRONT INSTALLATION



Step 13. Install Eibach front spring slider with the short end facing the top of the shock.



Step 14. Install Eibach main spring. Compress the spring assembly.



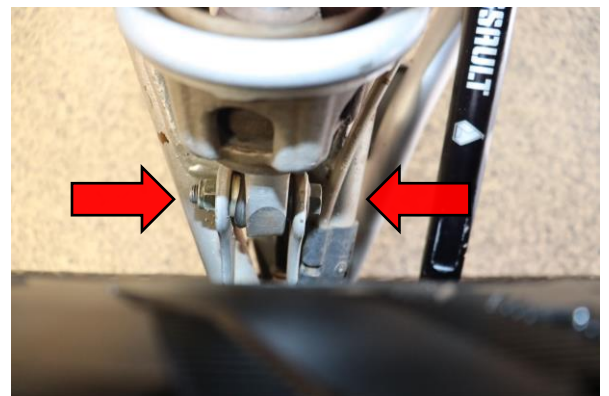
Step 15. Install OE lower spring perch. Decompress assembly and ensure lower spring perch engages lower shock mount fully.



Step 16. Install shock assembly in the vehicle



Step 17. Install upper shock mount nut and bolt loosely. Slightly lift on wheel and rotate lower shock



Step 18. Install lower shock mount nut and bolt. Use two 15mm to tighten upper and lower shock mount nut and bolts to manufacturer specification.

## FRONT INSTALLATION



Step 19. Lower the vehicle and drive a short distance to allow suspension to settle to a consistent ride height. Measure from the ground to the center of the front lower control arm bolt. The recommended preload measurement in **Step 11** will get the vehicle close to the recommended ride height but each vehicle may vary some. We recommend setting the ride height at **440mm (17 5/16"** measuring from the ground to the center of the lower control arm bolt. Due to sensitivity of weight on UTV's, some adjustment of preload may be needed to achieve desired ride height.

---

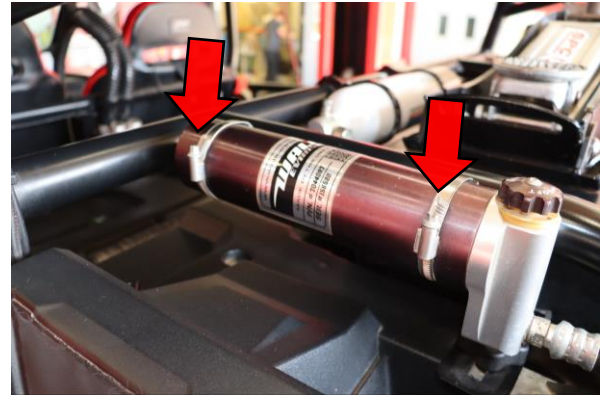
**Note: Skid plate height should be approximately 14" measured from a flat portion front and rear (with the OE 29" tire). If you have larger than stock wheels and tires, the ride height will be increased. With a 32" tire it will be 15.5" of ground clearance measured at the skid plate.**

---

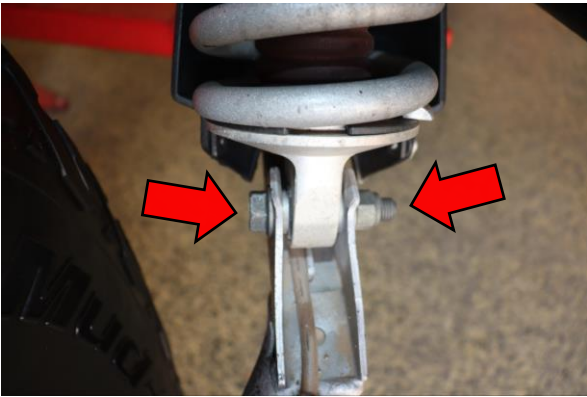
## REAR INSTALLATION



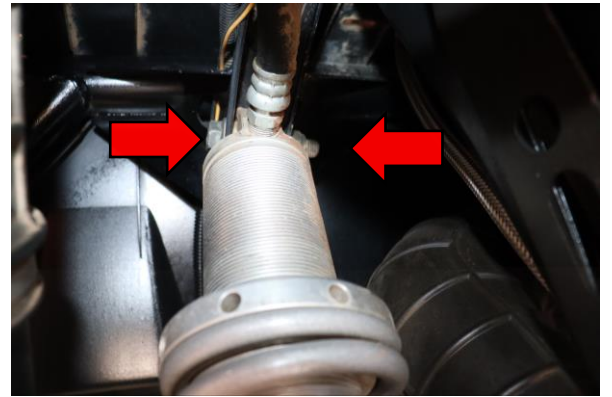
Step 1. Raise the rear of the vehicle and support it with the proper safety equipment. **Note: Never work on or under a vehicle that is not supported by the proper safety equipment.**



Step 2. Loosen 2 hose clamps using a flat head screwdriver or 8mm socket for reservoirs.



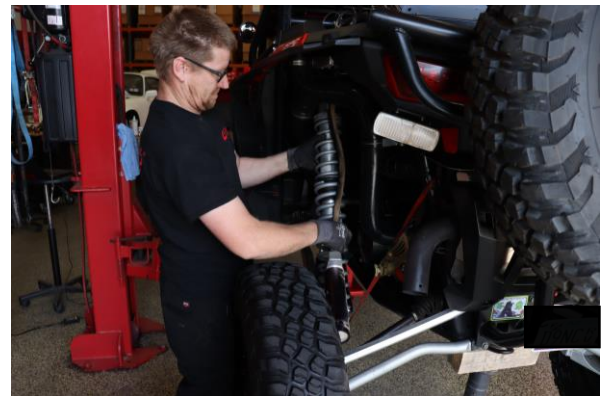
Step 3. Remove the lower shock mounting nut using two 18mm. Lift the tire slightly to remove the lower shock bolt..



Step 4. Remove the upper shock mount nut and bolt using two 18mm.



Step 5. Remove cover using T-30 for shock reservoir removal.

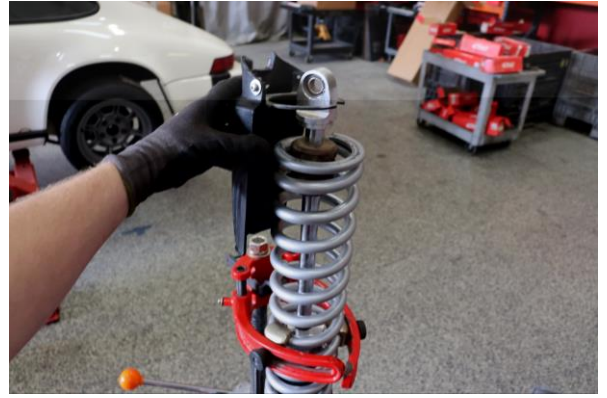


Step 6. Lift the shock assembly up and out of the lower mount. Remove the shock assembly from the vehicle.

## REAR INSTALLATION



Step 7. Remove the lower spring perch.  
Decompress the spring assembly.



Step 8. Remove the OE plastic shield.



Step 9. Remove the OE main spring.



Step 10. Remove the first OE spring slider.



Step 11. Remove the OE tender spring.

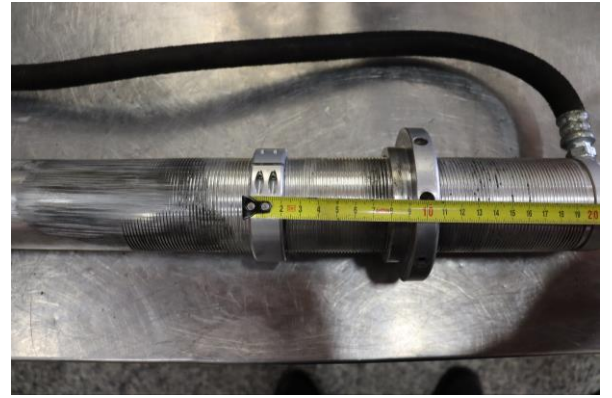


Step 12. Install supplied crossover rings

## REAR INSTALLATION



Step 13. Set pre-load to **115mm (4 1/2")** from bottom of spring seat to bottom of reservoir bridge collar.



Step 14. Adjust the Eibach supplied crossover ring to **95mm (3 3/4")** from bottom of spring seat to bottom of crossover ring.



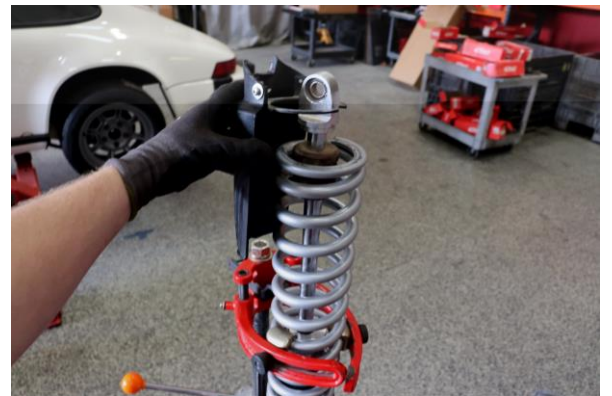
Step 15. Install Eibach tender spring.



Step 16. Install Eibach spring slider with the short end facing the top of the shock.



Step 17. Install Eibach main spring.



Step 18. Compress the spring assembly. Install the OE plastic shield.

## REAR INSTALLATION



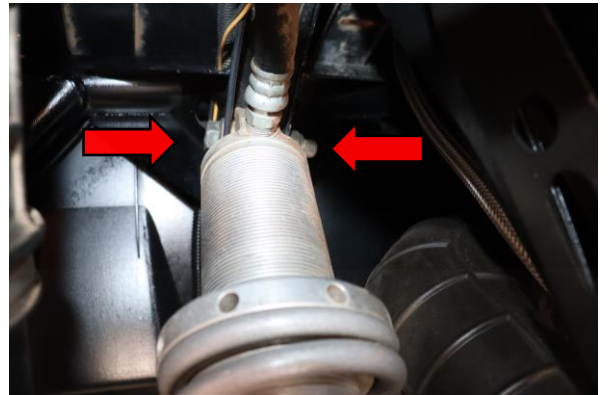
Step 19. Install the OE lower spring perch.



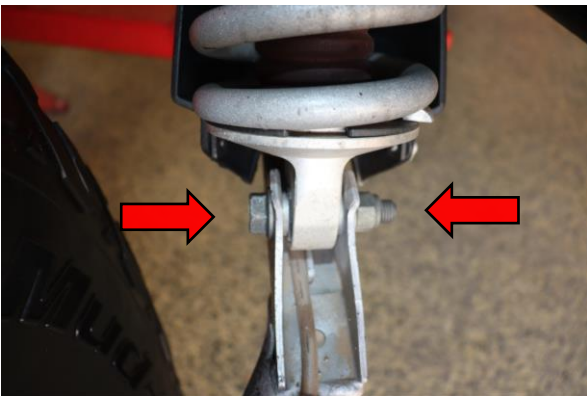
Step 20. Decompress the shock assembly ensuring the lower spring perch fully engages the lower shock mount.



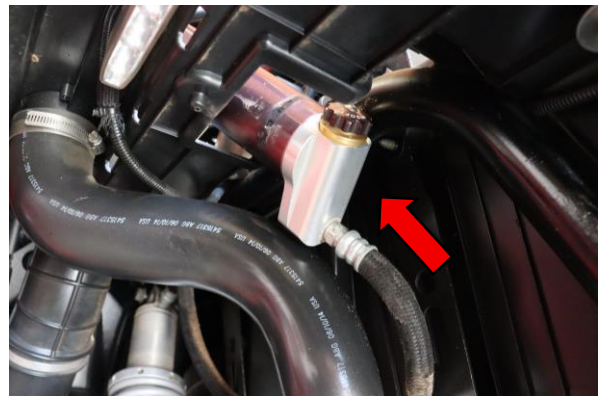
Step 21. Set the shock assembly in the vehicle.



Step 22. Install the upper shock mount nut and bolt. Use two 18mm to tighten to manufacturer specification.

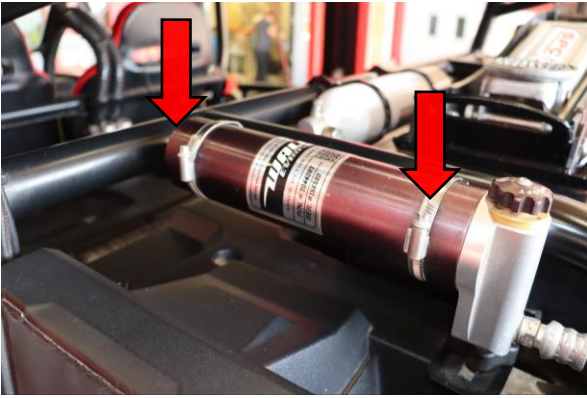


Step 23. Install the lower shock mount nut and bolt. Use two 18mm to tighten to manufacturer specification.

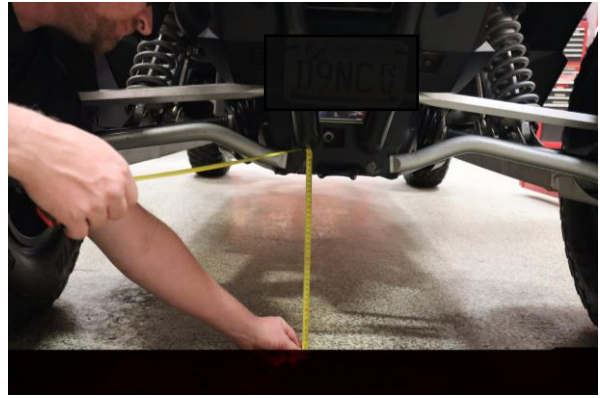


Step 24. Install reservoir thru bed.

## REAR INSTALLATION



Step 25. Install reservoir and tighten clams



Step 26. Lower the vehicle and drive a short distance to allow suspension to settle to a consistent ride height. Measure from the ground to the center of the rear lower control arm bolt. The recommended preload measurement in **Step 13** will get the vehicle close to the recommended ride height but each vehicle may vary some. We recommend setting the ride height at **430mm (16 15/16")** measuring from the ground to the center of the lower control arm bolt. Due to sensitivity of weight on UTV's, some adjustment of preload may be needed to achieve desired ride height.

**Note: Skid plate height should be approximately 14" measured from a flat portion front and rear (with the OE 29" tire). If you have larger than stock wheels and tires, the ride height will be increased. With a 32" tire it will be (15.5)" of ground clearance measured at the skid plate.**



Eibach recommended compression settings

Front: 7 clicks out from fully soft

Rear: 5 clicks from fully soft