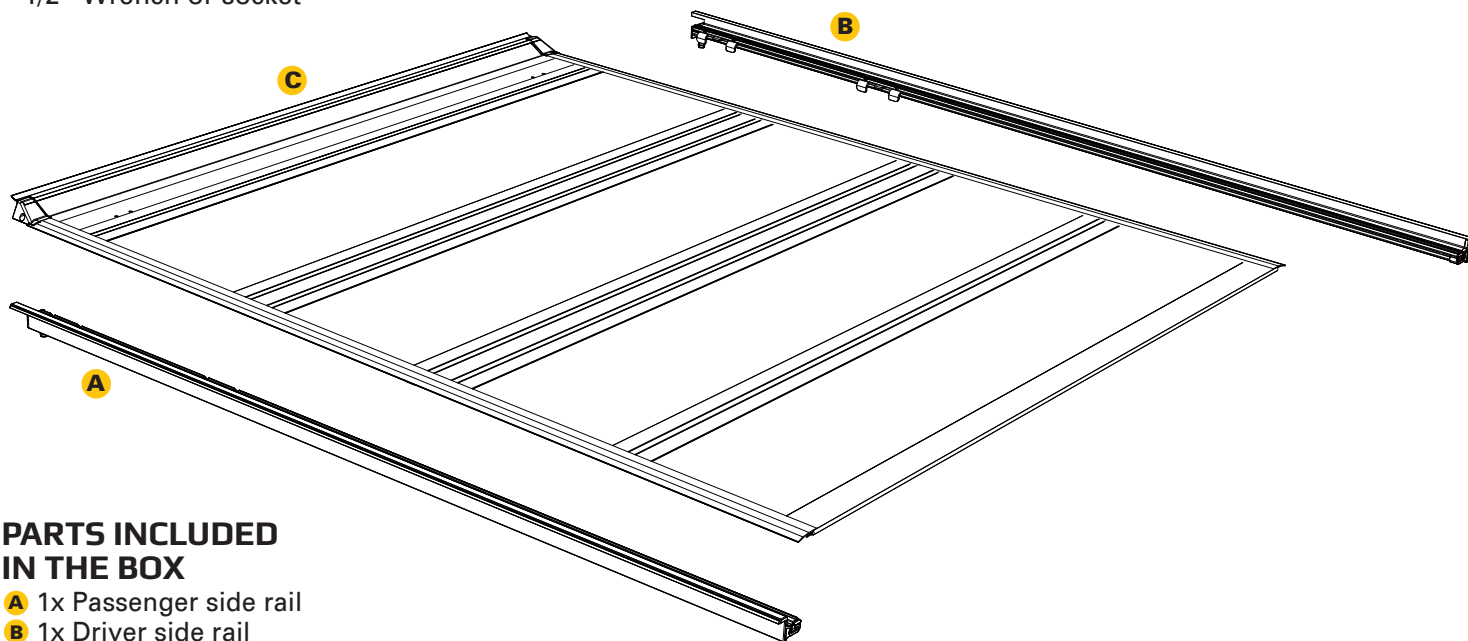


## TOOLS REQUIRED

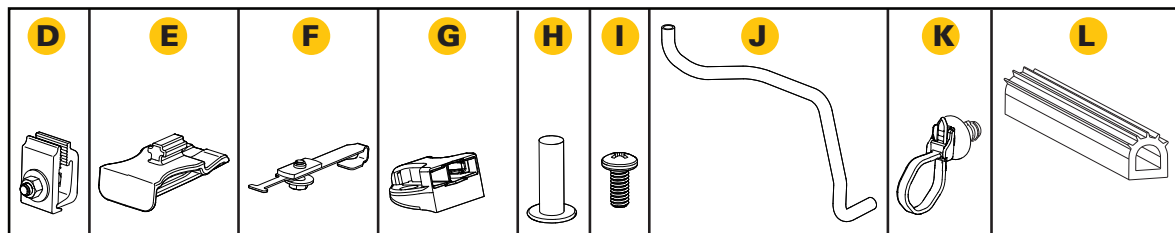
- Scissors or utility knife
- Isopropyl alcohol
- Ratchet or wrench set
- Phillips screwdriver
- 9/16" Wrench or socket
- 1/2" Wrench or socket

**NOTE:** It is important that all the areas where the bed cover mounts to the truck are clean and free of debris before installation.

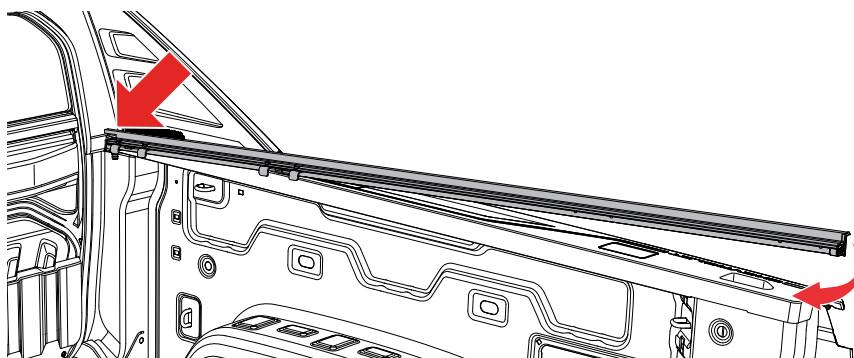


## PARTS INCLUDED IN THE BOX

- A** 1x Passenger side rail
- B** 1x Driver side rail
- C** 1x Hard fold cover
- D** 6x Clamps
- E** 4x Header guides
- F** 4x Header guide retainers
- G** 2x Buckle ends
- H** 4x Nutserts
- I** 4x Screws
- J** 2x Drain tubes
- K** 2x Hose clips
- L** 1x Bulkhead seal

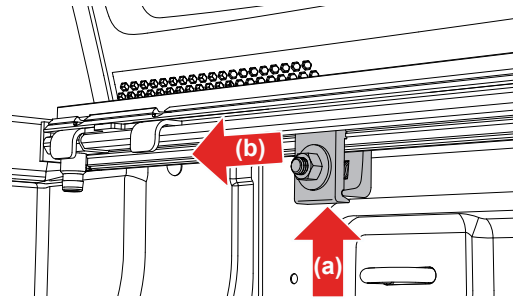
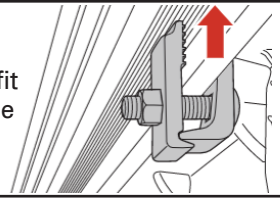


- 1** With the tailgate open, install the passenger side rail (A) by placing the slotted bracket all the way forward toward the cab and the bulkhead, at an angle, then rotate the rear of the rail on the bedcap as shown. Rail should be flat to bed cap and should appear to be level.

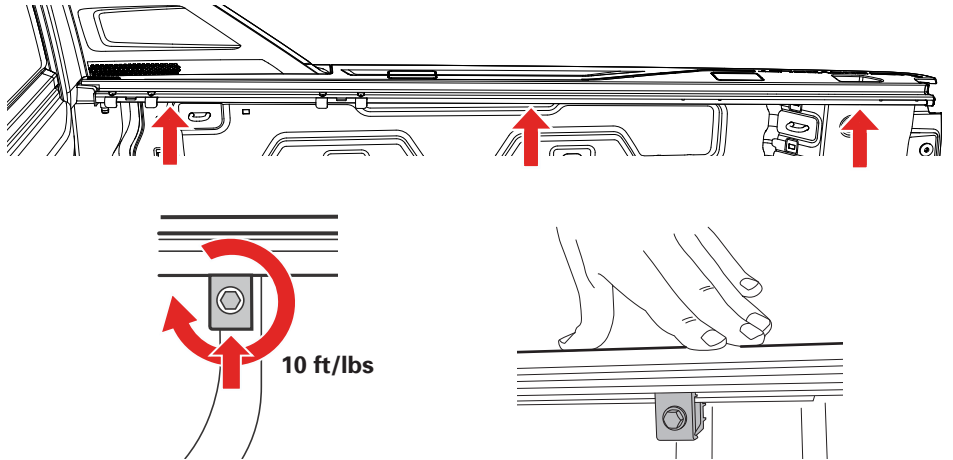


- 2** Take a loosened clamp and install it under the passenger side rail (A) and then move it as far forward as possible (B), then hand tighten.

Make sure the clamp is inserted all the way up into the rail and the clamp teeth fit squarely and fully engage the ribs of the rail to ensure a secure grip.



- 3** Install the remaining clamps (D) at the rear most and center location of the rail. Using a 9/16" wrench or socket, tighten all clamps until snug, then torque an additional 1/2 turn (approx. 10 ft/lbs). Apply downward pressure to the rail while tightening the clamp to ensure the rail is flush to the bed cap and seals properly. Repeat Steps 1-3 for the driver side rail.

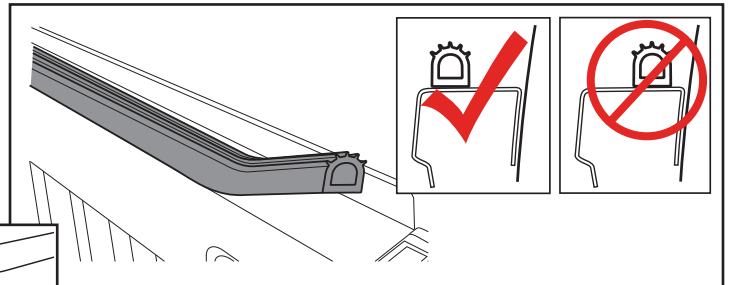
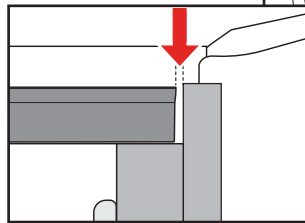


**NOTE:** Clamp positions may be restricted by bed components or other accessories. Make sure the installation of clamps does NOT cause interference to those components.

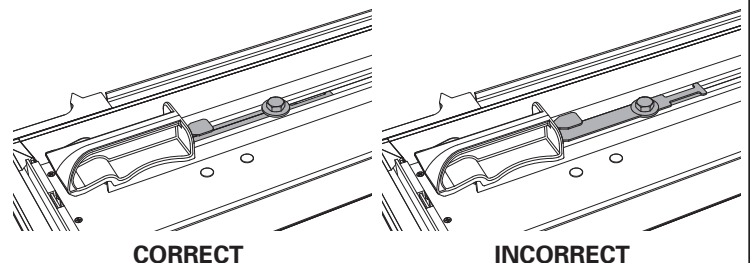
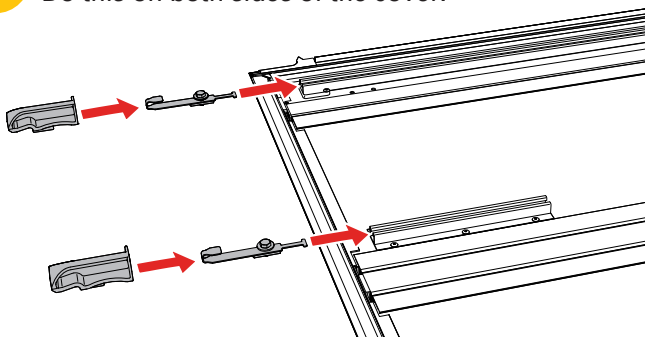
**NOTE:** If the rails are leaning down, have one person stand on the outside of the bed and slightly roll the rails upward while another person slowly snugs the clamps up. If the clamps are tightened too quickly or overtightened, it will cause the rails to lean down.

- 4** Clean the area where the bulkhead seal (L) will go with soap and water to remove dirt and debris. Then clean the area with isopropyl alcohol to remove wax or grease and to evaporate any remaining water. Allow surface to dry. Peel the backing off and position the bulkhead seal at the edge of the bed opening, as close to the inside of the bed as possible. Apply pressure to the entire seal to make sure the adhesion is good.

Bulkhead seal should be trimmed so that there is a 1/8"-1/4" gap to the rail. This will allow water to flow into the provided rail system to help with water management.

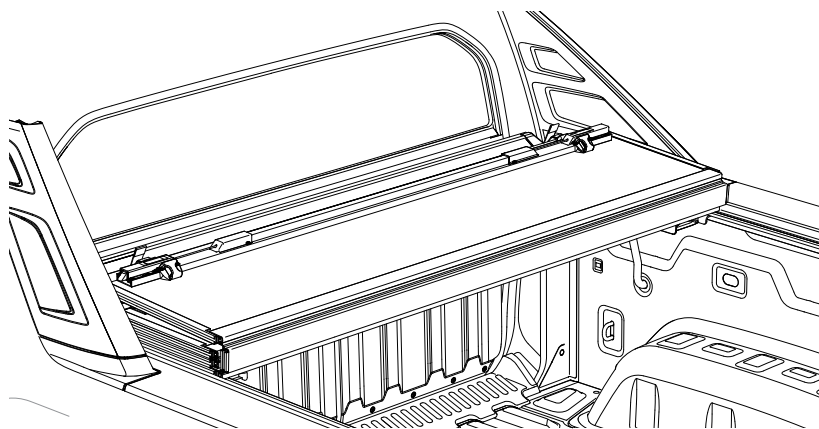


- 5** Install the header guide retainer and header guide into each rail, on the underside of the cover, as shown. Do this on both sides of the cover.



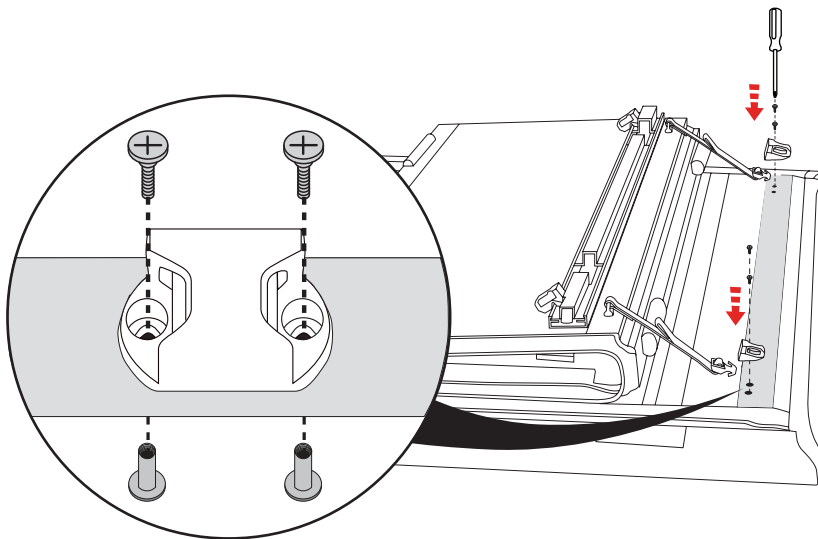
6

This step is best to ask for some assistance. Set the bed cover in the folded position on the rails towards the front of the vehicle bed.



7

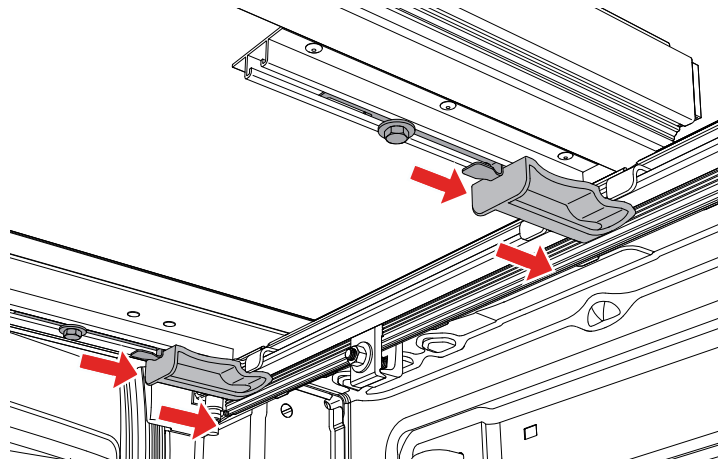
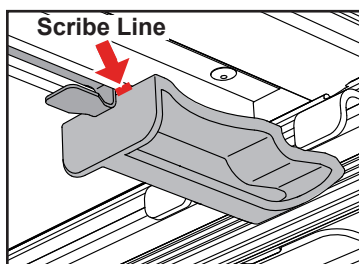
Position the buckle ends (G) so the open side faces the bed cover panel. Use a screwdriver to install the two buckle ends into the pre-drilled holes on the front header panel with the provided machine screws (I) and nuts (H). **DO NOT** use a screw gun; securely tighten by hand only.



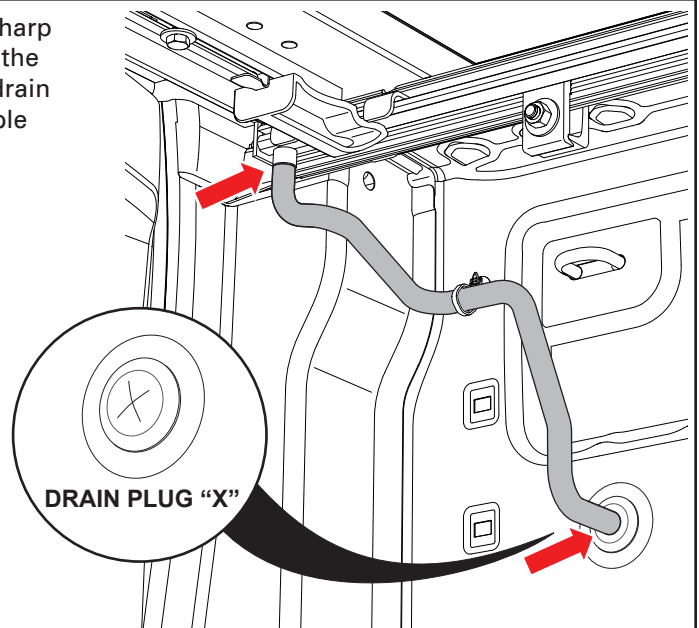
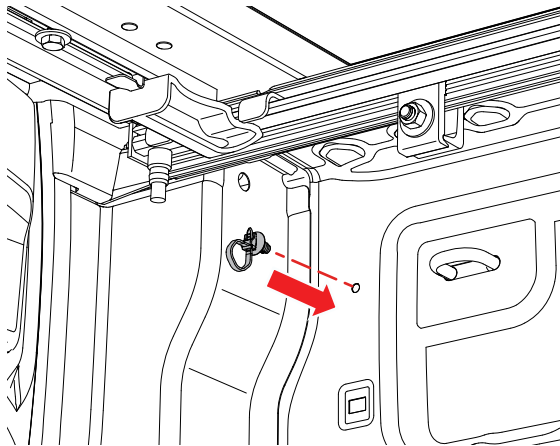
8

Push the header guide outward towards the rail until it stops. Push the header guide retainer outward until it stops against the back of the header guide. Using a 1/2" wrench or socket, tighten the header guide retainer bolt until snug, then torque an additional 1/2 turn (approx. 10 ft/lbs).

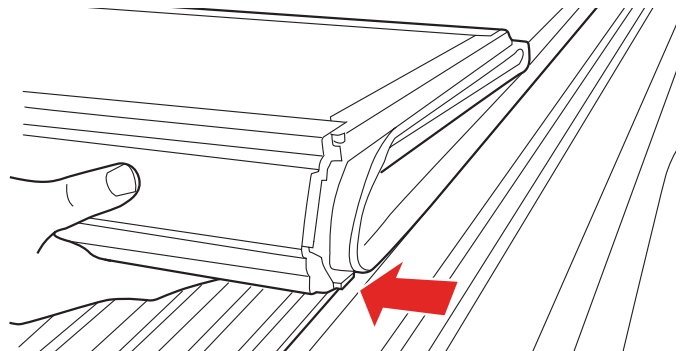
A scribe line on the underside of the tonneau indicates the general location where the header guide and header guide retainer should be positioned.



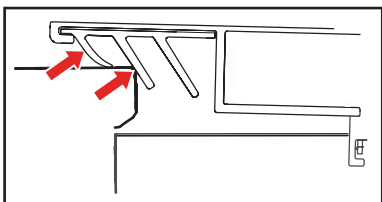
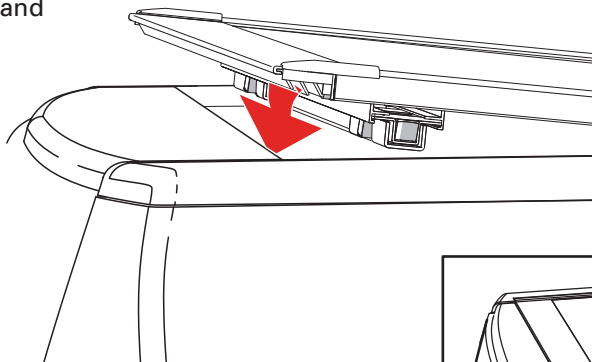
- 9** Install the hose clip (K) into the hole as shown below. Using a sharp knife, cut an "X" pattern into the drain plug. Attach one end of the drain hose (J) to the front end of the rail. Route the other end of the drain hose (J) through the "X" in your drain plug. Once you have a favorable route, attach zip ties wherever else desired.



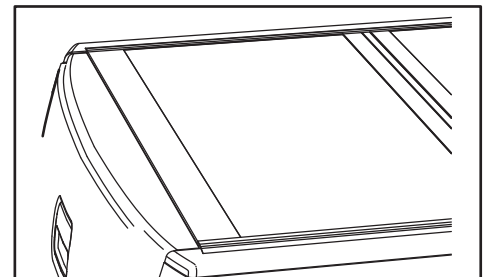
- 10** Unfold the cover towards the tailgate. Make sure the cover fits squarely between the rails.



- 11** Verify that the tailgate functions properly and that the seal aligns with the tailgate.

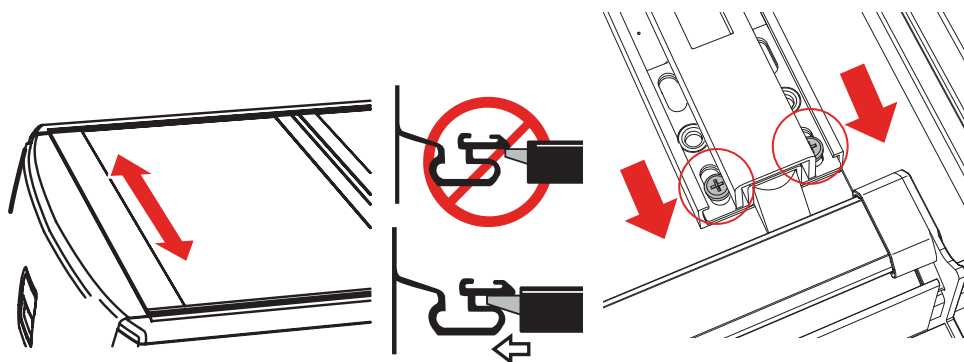


With the proper alignment, the first fin and 1/2 of the middle fin of the tailgate seal will be engaged with the tailgate.

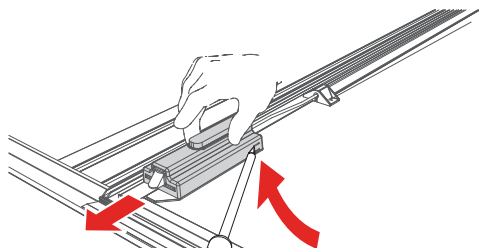


**NOTE:** The rear edge of the cover and tailgate seal should rest on top of the tailgate.

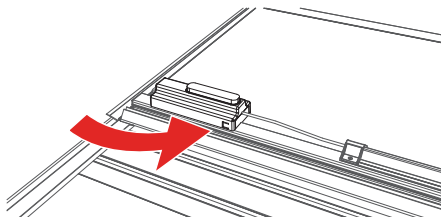
- 12** Check to see that the cover panel latches make proper contact with the side rails. **NOTE:** In some cases the latch will need to be adjusted to achieve proper latch contact with the side rails. There are two factory installed screws on each side of the latch that should be loosened by hand only, then the latch slid out board and retightened. This may need to be done on both the passenger and driver side latch.



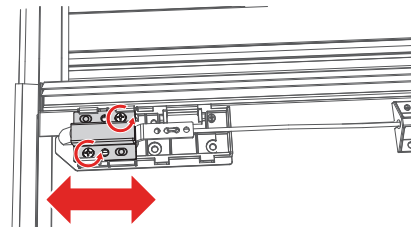
## ADJUSTING SLAM LATCH



Use a screwdriver to partially pry open the tab on the latch housing. At the same time slide the housing away from the latch assembly.



**Note:** that the tab is located on the opposite side of the housing on the passenger side of the cover.

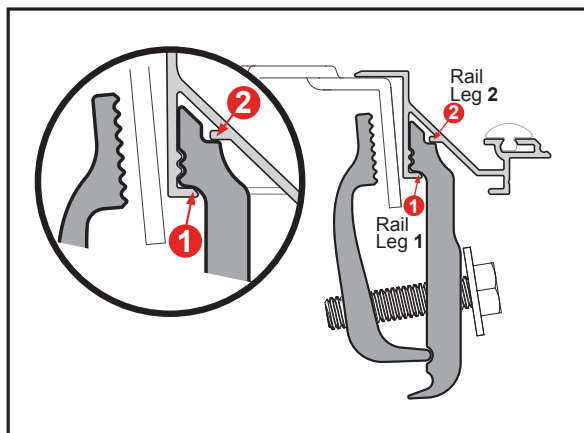


With the latch cover removed, loosen the screws and move the latch bracket to adjust. Retighten the screws. Slide the latch housing back on.

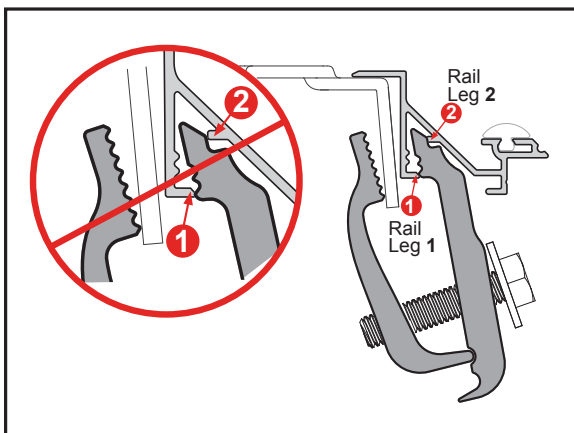
## TROUBLESHOOTING TIPS

**Leaning Rails:** Improper engagement of the clamps can cause the rails to appear tilted inward. To ensure the clamps are properly installed loosen the nut. Adjust the clamp(s) until you have full engagement of sections 1 & 2, as shown below. When the clamp and rail are properly engaged an audible click will be heard. Overtightening the bolt can also contribute to tilted rails. **Do NOT over torque the bolt.**

### PROPER RAIL & CLAMP ENGAGEMENT



### IMPROPER RAIL & CLAMP ENGAGEMENT



**Water Intrusion:** Make sure the retaining clamps are tight and properly engaged to the side rails. Check that the bulkhead seal is in place and the cover is resting on it. Make sure that all latches are engaged to the side rails and adjust if needed. Check that the side rails are installed flush with the top of the bed rail.

**Sticking Latch:** The cable could be pinched in or under the cable guide extrusion. Loosen the three screws on the center cable cover (bar), located in the middle of the panel. Slightly lift up on the cable guide extrusion. Pull on both sides of the cable.

**Wavy Side Seal:** The seal may be wavy when removed from the box. Allow ample sunlight for seal to lay flat and relax.

## CARE AND MAINTENANCE

The truck bed cover requires occasional cleaning with mild automotive soap and water only. Avoid using abrasive cleaners as they may dull the finish. Some chemicals and fluids such as insect repellents, oils, solvents, and lubricants could potentially damage the rubber hinges and seals and void the warranty.

### CAUTION

Always read the ingredients of any product you are using to clean your truck bed cover. Make sure that you use only products that are safe for use with rubber. Many cleaners contain chemicals that could permanently discolor or damage your hinges and seals.

Periodically check that your cover is securely attached to your truck bed and working as intended. Inspect all hardware such as clamps and cover retainer clamps to ensure they are properly installed and working as intended. Covers that are used at high frequency or subject to rough roadways and/or heavy vibration conditions may cause the cover to require adjustment.

It is also recommended that you regularly inspect and service each panel latch. Clean away any excess dirt or grime. Ensure all latches move freely in and properly engage the side rail to provide optimal performance and security.

## SAFETY INSTRUCTIONS

- DO NOT place objects on or against cover or framework.
- DO NOT tie cargo to truck bed cover or framework.
- DO NOT operate vehicle with objects on top of the cover.
- NEVER allow children or pets to occupy the truck bed with the cover in the fully closed position.
- The cover is not airtight. Special care is required to keep cargo clean and dry.
- Truck bed covers will not prevent theft of contents inside the truck bed.

# LIMITED WARRANTY

## WARRANTY COVERAGE

This truck bed cover is warranted against defects in materials or workmanship as follows. This warranty is void if the product has been damaged in an accident, or due to neglect, unforeseeable use, improper installation, improper servicing, or other cause not arising out of defects in material or workmanship.

**MX4** - The truck bed cover carries a limited warranty for **five (5) years** from the original date of purchase, subject to the terms below.

## WARRANTY IS NOT TRANSFERABLE

The warranty is to the initial owner purchasing the truck bed cover and it is not transferrable to a subsequent end user. Proof of purchase may be required to enforce these warranty rights.

## WARRANTY CONDITIONS

Failure to follow care and use instructions will void the warranty.

- Clean with mild automotive soap and water only.
- Cover must be secured at all points when vehicle is in motion.
- Check all clamps and retention mechanisms for tightness after a week of driving following installation (or re-installation) of the cover and periodically thereafter.
- Before opening, the cover must be free of all foreign materials including snow and ice.
- Do NOT tow your vehicle from the rear with the cover on your vehicle. If towing from the rear is required, the cover MUST be removed from the vehicle and properly stored.

## WARRANTY PERFORMANCE

If all warranty conditions are met, a defective truck bed cover or hardware component will either be repaired or replaced (at our option). We reserve the right, for any warranty, to substitute a newer model or bed cover having similar form and function, to offer a warranty discount on an entire replacement system, and/or provide remedies other than those mentioned in this document.

## WARRANTY RETURN

A Return Material Authorization number must be obtained from our Customer Service Department prior to returning any product. We may require the original item to be returned postage prepaid for final determination. Shipping charges will apply for any repair or replacement. Other than postage or shipping charges, no charge will be made for repair or replacement under this warranty.

This warranty gives you specific legal rights. As an owner, you may also have additional rights and remedies under the laws of your state.

## WARRANTY REGISTRATION

Warranty registration must be on file and/or proof of original purchase (detailed and dated receipt) required for warranty to be effective.

<https://realtruck.com/bak-warranty>

**REGISTER  
YOUR  
WARRANTY  
ONLINE**

