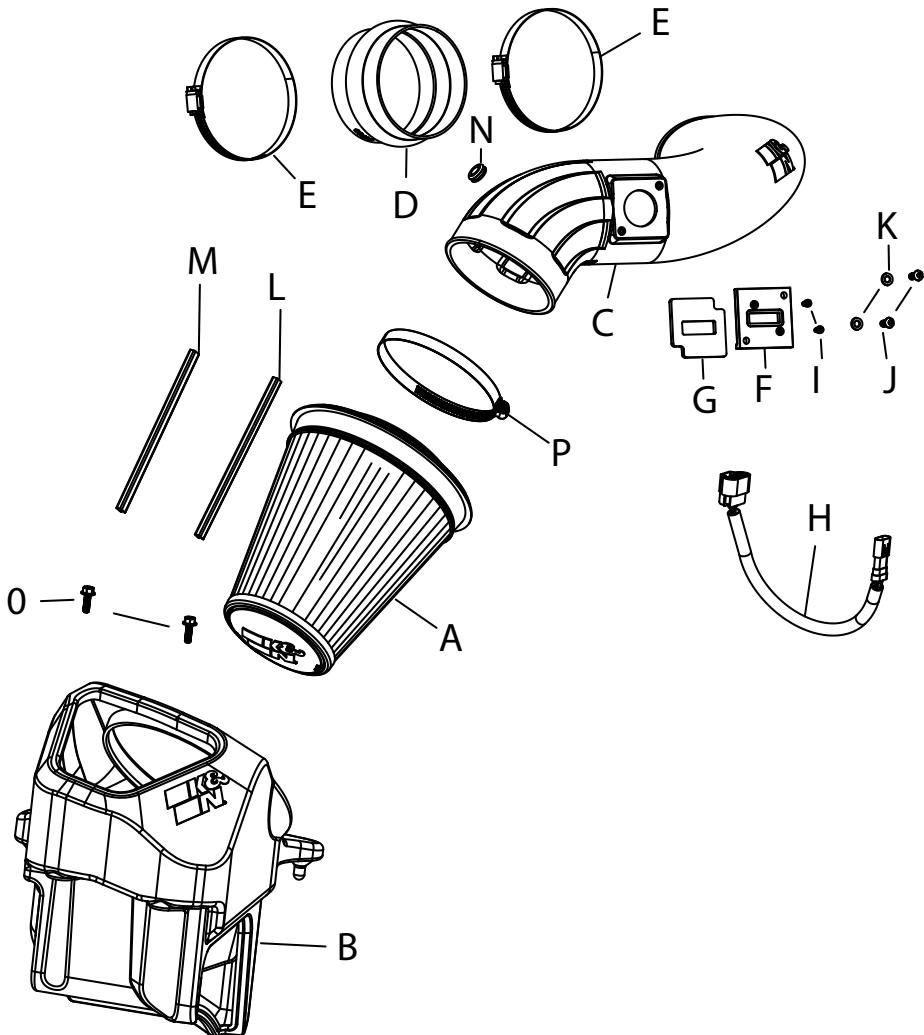




INSTALLATION INSTRUCTIONS

Not legal for sale or use in California on any pollution controlled motor vehicle.

50-2600D FORD 2017-19 F250 / F350 / F450 / F550 V8-6.7L Turbo Diesel



TOOLS NEEDED:

- Flat blade screw driver
- Ratchet
- Extension
- 10mm socket
- 8mm socket
- T20 torx
- 4mm allen
- 5mm allen key

PARTS LIST:

Description	Qty.	Part #	Description	Qty.	Part #	Description	Qty.	Part #
A AIR FLTER DRY	1	RU-3138HBK	G GASKET; PORON	1	09069	L SNAP ON; CLIP RED	1	088220
B AIR BOX	1	087651	H EXTENSION HARNESS; MAF	1	21780	M SNAP ON; CLIP ORANGE	1	088221
C TUBE	1	087652	I BOLT; M4-.7 X 8MM	2	07733	N GROMMET	1	KITGRMT03
D HOSE; HUMP 4.5" X 3"L	1	08695	J BOLT; M6 X 1 X 16MM	2	07730	O BOLT; M6-1 X 20, HEX	2	1-2038
E HOSE CLAMP; #72 BLK	2	08671KA	K WASHER; FLAT	2	08269	P HOSE CLAMP; #72 BLK	1	KITHS88K
F ADAPTOR; MAF SENSOR	1	21515-1						

If you need any assistance please call 1-800-858-3333 to speak with a representative in our Customer Service Center before returning the product.

NOTE: FAILURE TO FOLLOW INSTALLATION INSTRUCTIONS AND NOT USING THE PROVIDED HARDWARE MAY DAMAGE THE INTAKE TUBE, THROTTLE BODY AND ENGINE.

TO START:

- Turn off the ignition and disconnect the negative battery cable.
NOTE: Disconnecting the negative battery cable erases pre-programmed electronic memories. Write down all memory settings before disconnecting the negative battery cable. Some radios will require an anti-theft code to be entered after the battery is reconnected. The anti-theft code is typically supplied with your owner's manual. In the event your vehicles anti-theft code cannot be recovered, contact an authorized dealership to obtain your vehicles anti-theft code.



- Release the locking tab and then disconnect the mass air sensor electrical connection.



- Loosen the hose clamp that secures the factory intake tube to the turbo inlet. Release the clips that secure upper air filter housing, then remove the factory intake tube and upper housing from the vehicle.



- Remove the two bolts that secure the lower air filter housing to the inner fender mounting bracket, then remove the lower housing and air filter from the vehicle. **NOTE: K&N® Engineering, Inc., recommends that customers do not discard factory air intake.**



- Install the K&N air filter housing into the into the vehicle so that the mounting stud inserts into the mounting grommet, then secure to the fender bracket with the hardware provided.



- Attach the filter clips to the pleats on the air filter align and push down. Passenger side filters, place orange clip on top and red on bottom.



7. Install the K&N filter into the filter housing as shown.



8. Remove the filter minder and mass air sensor from the factory intake tube.



9. Install the provided gasket onto the K&N mass air sensor adapter, then install the mass air sensor into the adapter and secure with the provided hardware.



10. Install the MAF sensor assembly into the intake tube and secure using provided hardware. Secure and tighten. **NOTE: Make sure the sensor is going in the correct direction.** If it is not installed in the correct orientation, remove the adapter bolts and spin 180 degrees then reinstall the bolts.



11. Install the filter minder into the K&N intake tube using the provided grommet.



12. Install the provided hump coupler and hose clamps onto the K&N intake tube. NOTE: Slide the coupler all the way onto the intake tube and do not secure the hose clamps.



13. Install the intake tube into the filter, align with the turbo inlet, then slide the coupler onto the turbo inlet. Adjust the assembly for best fit and then secure all the hose clamps.



14. Reconnect the mass air sensor using the provided extension harness.



16. Reconnect the vehicle's negative battery cable. Double check to make sure everything is tight and properly positioned before starting the vehicle.

17. It will be necessary for all K&N® high flow intake systems to be checked periodically for realignment, clearance and tightening of all connections. Failure to follow the above instructions or proper maintenance may void warranty.

ROAD TESTING:

1. Start the engine with the transmission in neutral or park, and the parking brake engaged. Listen for air leaks or odd noises. For air leaks secure hoses and connections. For odd noises, find cause and repair before proceeding. This kit will function identically to the factory system except for being louder and much more responsive.
2. Test drive the vehicle. Listen for odd noises or rattles and fix as necessary.
3. If road test is fine, you can now enjoy the added power and performance from your kit.
4. K&N Engineering, Inc., requires cleaning the intake system's air filter element every 50,000 miles. When used in dusty or off-road environments, our filters will require cleaning more often. We recommend that you visually inspect your filter once every 25,000 miles to determine if the screen is still visible. When the screen is no longer visible some place on the filter element, it is time to clean it. To clean, purchase our Synthetic Filter Cleaner, part number 99-0624 and follow the easy instructions.