

INSTALLATION INSTRUCTIONS

HDX XTREME BOARDS

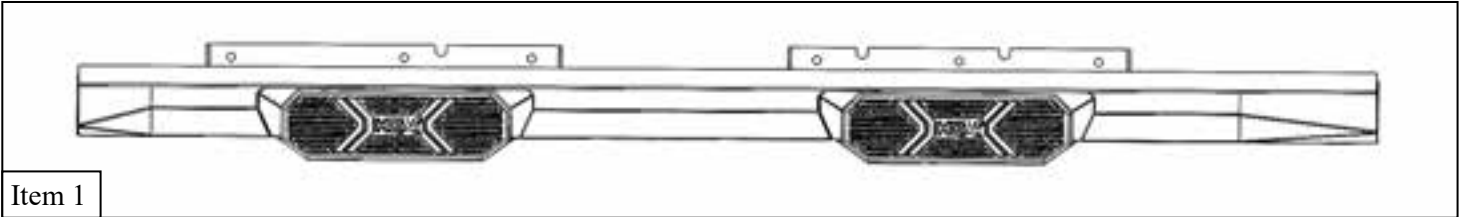


APPLICATION: 2024+ Tesla Cybertruck

PART NUMBER: 56-26095

CONTENT			
ITEM	QUANTITY	DESCRIPTION	TOOLS NEEDED
1	1	HDX XTREME BOARD DRIVER	17 MM SOCKET
2	1	HDX XTREME BOARD PASSENGER	16 MM SOCKET
3	12	M10 FLAT WASHER (BLACK ZINC)	10 MM SOCKET
4	12	M10 HEX HEAD BOLT (BLACK ZINC)	RATCHET PRY TOOL

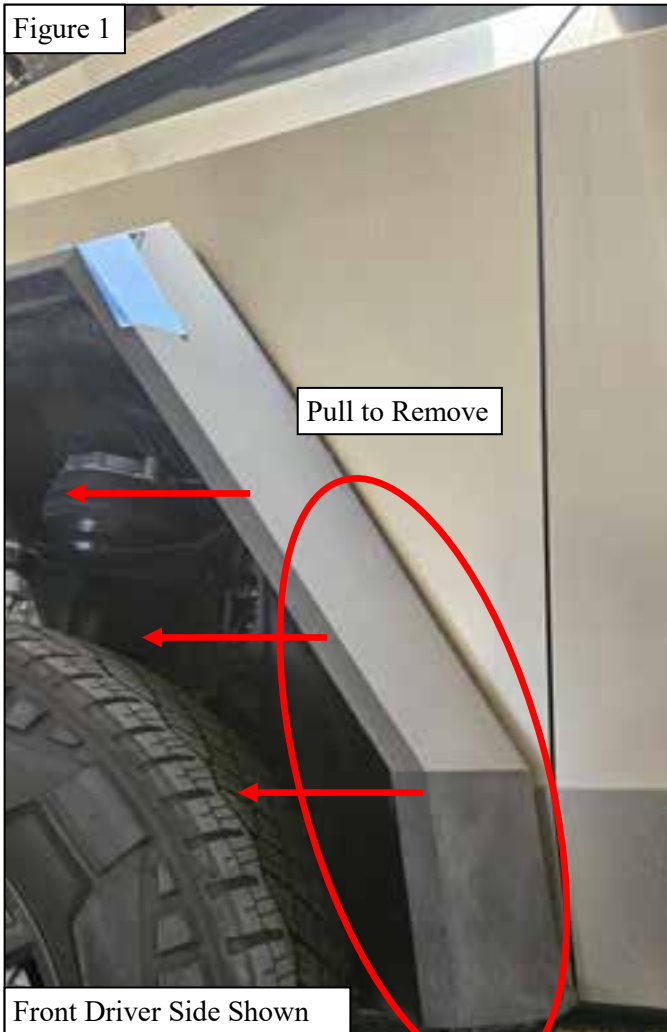
ANTI-SEIZE LUBRICANT MUST BE USED ON ALL STAINLESS STEEL FASTENERS TO PREVENT THREAD DAMAGE AND GALLING



PROCEDURE

1. Remove contents from box, verify if all parts listed are present and free from damage.
Carefully read and understand all instructions before attempting installation.
Failure to identify damage before installation could lead to a rejection of any claim.
2. Starting with the driver's side, remove the lower portion of the front and rear fender flares by pulling outwards (**Fig 1**). For the front flare, only pull off the portion in the lower area behind the wheel. For the rear flare, only pull off the portion in the lower area in front of the wheel.
3. Be careful not to unclip the cameras attached to the front fender flare.
4. Remove the two bolts shown in **Figures 2-3** using a 10mm socket.

Figure 1



Only Remove Lower
Portion of Fender Flare

Figure 2



Figure 3



WESTIN

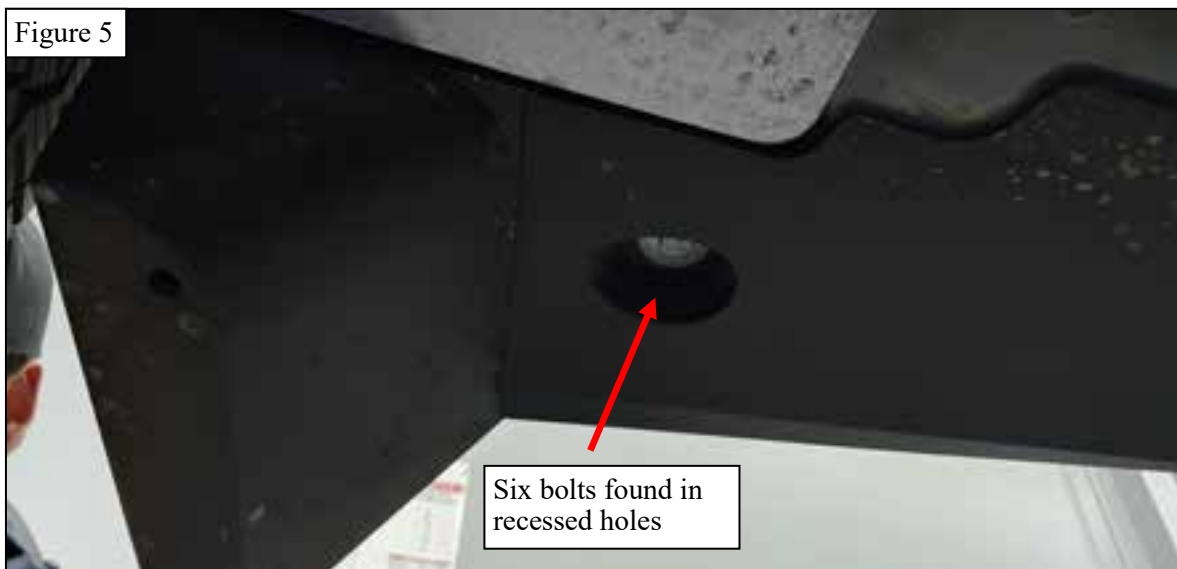
Westin Automotive Products, Inc.
320 W. Covina Blvd
San Dimas, Ca. 91773

5. Unbolt the vehicle's side skirt using a 10mm socket (**Fig 4-5**).

Figure 4

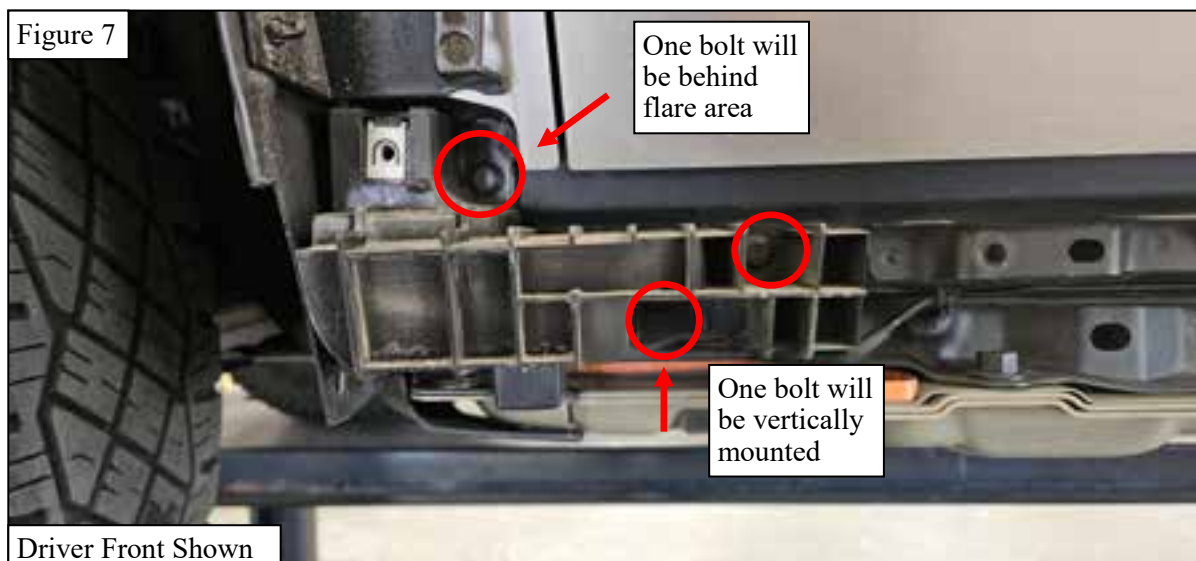
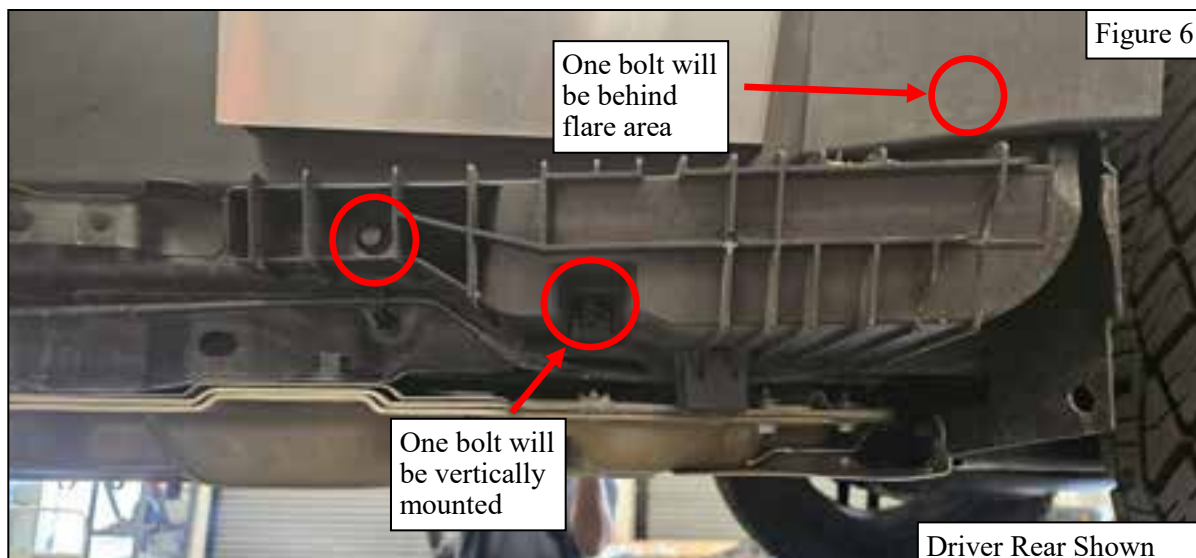


Figure 5



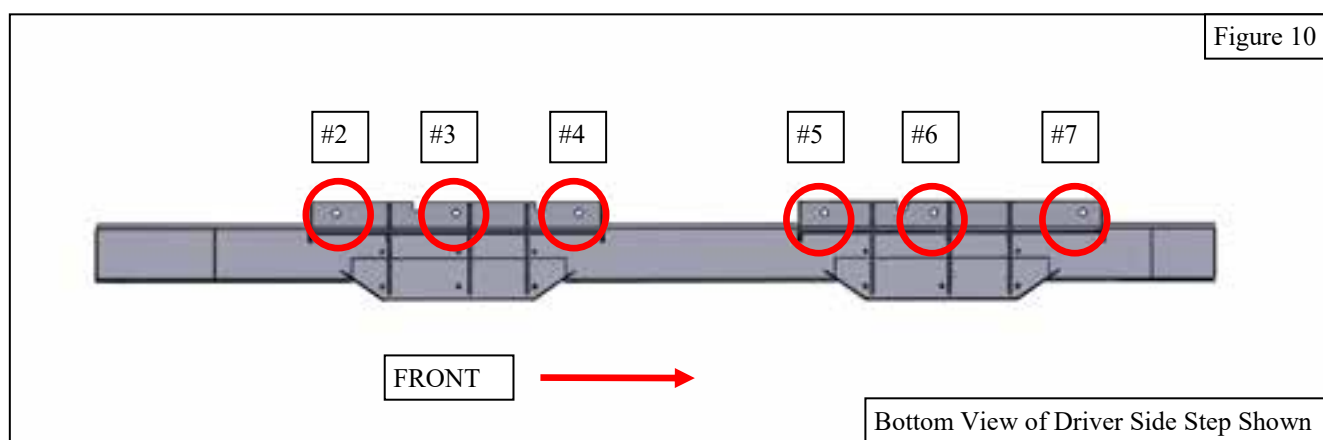
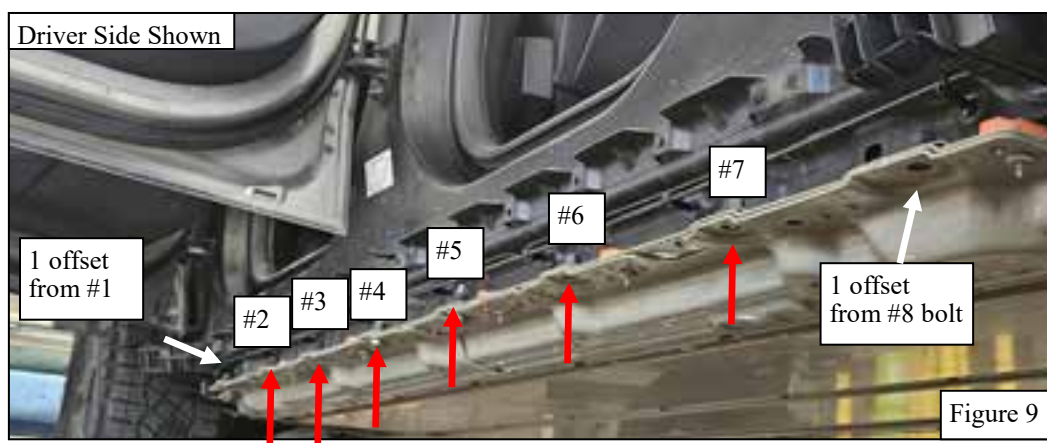
6. Using a 10mm socket, remove the three bolts holding the plastic structures found behind both ends of the side skirt (**Fig 6-7**).

Note: There is 1 bolt found behind each front and rear fender flare area that will need to be removed.



7. Locate the eight OEM bolts that hold the battery pack to the vehicle. Using a 16mm socket, remove #2-#7 bolts starting from the front most bolt. (**Fig 8-9**).

Note: Line up the step on the floor next to the vehicle and locate the six OEM bolts that correspond to the mounting holes (**Fig 10**).



8. Attach the step on the vehicle so that it slides over the black sheet metal segments (**Fig 11-12**).
9. Use a 17mm socket, (6) M10 Hex Head Bolts, and (6) M10 Flat Washers to secure the step to the vehicle. The bolts will thread into the #2-#7 nuts located on the vehicle's battery pack cover (**Fig 10**).
10. Reinstall the front and rear fender flares back onto the car.
11. Repeat steps two through ten for the passenger side.



Strip on step will cover these metal segments



Westin Automotive Products, Inc.
320 W. Covina Blvd
San Dimas, Ca. 91773

INSTALLATION COMPLETE



CARE INSTRUCTIONS

- REGULAR WAXING IS RECOMMENDED. DO NOT USE ANY TYPE OF POLISH OR WAX THAT MAY CONTAIN ABRASIVES.
- STAINLESS STEEL PRODUCTS CAN BE CLEANED WITH MILD SOAP AND WATER. STAINLESS STEEL POLISH SHOULD BE USED TO POLISH SMALL SCRATCHES.
- GLOSS BLACK FINISHES SHOULD BE CLEANED WITH MILD SOAP AND WATER.

WESTIN

Westin Automotive Products, Inc.
320 W. Covina Blvd
San Dimas, Ca. 91773

P.N.: 75-5626095-RevA

ECO #:W24-0064

7

Thank you for choosing Westin products
for additional installation assistance please call
Customer Service (800) 793-7846
www.westinautomotive.com

DATE: 03/07/25



WARNING



Failure to follow these instructions could lead to death, personal injury, and / or property damage.

Failure to follow these instructions could lead to death, personal injury, and / or property damage.

FASTENERS:

All Westin supplied fasteners must be utilized and installed in accordance with the installation instructions and apply torque to the specifications as defined. **DOUBLE CHECK ALL FASTENERS BEFORE INITIAL USE, AND PERIODICALLY IN THE FUTURE TO ENSURE PROPER FUNCTION AND SAFETY.**

DRILLING:

Most Westin products do not require drilling for installation. If drilling is defined as required, use caution when drilling a vehicle. **FAILURE TO REVIEW AN AREA TO BE DRILLED MAY RESULT IN PERSONAL INJURY AND/OR INJURY TO OTHERS AS WELL AS VEHICLE DAMAGE.**

EYE PROTECTION:

ALWAYS WEAR SAFETY GLASSES OR GOGGLES DURING THE INSTALLATION PROCESS TO AVOID PERSONAL INJURY.

MAXIMUM TOWING/CARRYING CAPACITY: (if applicable)

The Westin Receiver Hitches will have a visible tow rating label affixed directly on the product. User should never exceed the vehicle manufacturers maximum tow and weight rating regardless of the capacity of the hitch. **FAILURE TO FOLLOW THESE GUIDELINES WILL VOID THE WESTIN WARRANTY AND MAY RESULT IN PERSONAL INJURY AND/OR INJURY TO OTHERS AS WELL AS VEHICLE DAMAGE.**

FOR CALIFORNIA RESIDENTS ONLY-PROP 65 WARNING:

Some products may contain chemicals such as DEHP, which can cause cancer, birth defects or other reproductive harm. For more info go to www.p65warnings.ca.gov



Westin Automotive Products, Inc.
320 W. Covina Blvd
San Dimas, Ca. 91773