

RAM 2500/3500 SPEC FRONT BUMPER

19-26 RAM 2500/3500

FBFR1-01



TOOLS REQUIRED

- + 10mm, 13mm, 17mm, 18mm, 19mm, 21mm, 22mm, 24mm sockets
- + #4, #5, #8 Allen tool/socket
- + 13mm, 10mm, 19mm wrenches
- + Trim Tool
- + Safety Glasses
- + Snips
- + Razor Blade or similar
- + Zip Ties

SKILL LEVEL

- + Novice/Intermediate
- + 1 (you) to 2 persons

Little skill level required, you can easily install it by yourself however, additional help will be useful to prevent injury or damage.

TIME REQUIRED

- + Approximately 4.5 Hours

WARNINGS/CAUTIONS BEFORE STARTING INSTALLATION

Before you install this kit – Read and understand all instructions, warnings, cautions, and notes contained in this installation instruction guide. Consult your vehicle owner's manual for proper disconnection of electrical and lifting of vehicle if required for installation of this product.

This install may require some technical skills and knowledge of basic mechanical work. If you do not feel that you are capable of performing this install please take this product to a trained professional.

After reading this guide please contact us with any questions or concerns before installing product.
Customer Service: 855-680-9595

DV8 Offroad is not responsible for any bodily injury or harm to you or your vehicle as a result of an improper install.

Proper installation of this kit required knowledge of the factory recommended procedures for removal and installation of original equipment components. We recommend that the factory shop manual and any special tools needed to service your vehicle be on hand during the installation. Installation of this kit without proper knowledge of the factory recommended procedures may affect the performance of these components and the safety of the vehicle

• Always wear eye protection when operating power tools

Inspect all contents of this package to make sure product is not damaged and all installation hardware has been included. If parts are missing from kit, please be prepared to provide the following information

1. Name of purchase location
2. Bar Code on side of box
3. Date above bar code
4. Date inside box cover

HARDWARE INCLUDED

Begin by unpacking all items and inspecting for missing pieces or damage. If you have any concerns, please contact the company the product was purchased from. Extra hardware may be included with the product.



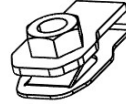
(14) M14x35mm
Hex Bolts



(14) M14 Nylock
Nuts



(28) M14 Flat
Washers



(2) M12 Nutclips



(2) M12x40mm Hex
Bolts



(10) M12x30mm
Allen Bolts



(20) M12 Flat
Washers



(2) M12 Fender
Washers



(10) M12 Nylock
Nuts



(2) M10x25mm Hex
Bolts



(2) M10 Nylock
Nuts



(4) M10 Flat
Washers



(4) M8x20mm
Countersunk Bolts



(4) M8 Nylock
Nuts



(2) Foam Pads

HARDWARE CONT.



(4) M6x20 Allen Bolts



(4) M6 Nylock Nuts



(8) M6 Flat Washers

PARTS INCLUDED



STEP 1 | TO UNINSTALL THE FRONT BUMPER, START BY DISCONNECTING THE MAIN BUMPER HARNESS LOCATED ON THE BACKSIDE OF THE BUMPER ON THE DRIVER SIDE.



STEP 2 | USING A 24MM SOCKET, REMOVE THE TWO BOLTS HOLDING THE TOW HOOKS ON EACH FRAME RAIL.



STEP 3 | USING A 18MM SOCKET, REMOVE THE TWO BOLTS HOLDING THE BUMPER MOUNTS ONTO THE FRAME ON BOTH SIDES. UPPER BOLT IS HIDDEN BY THE FRAME MOUNT SLIGHTLY.

NOTE: BUMPER MAY BECOME LOOSE, ENSURE YOU HAVE AN EXTRA SET OF HANDS TO PREVENT IT FALLING CAUSING DAMAGE OR HARM.



STEP 4 | ONCE ALL THE BOLTS ARE REMOVED, BEGIN BY SLOWLY PULLING THE BUMPER AWAY FROM THE TRUCK. AS YOU DO, USING A TRIM TOOL, RELEASE THE WIRE HARNESS FROM THE BUMPER.



STEP 5 | WITH THE BUMPER DETACHED, SET OFF TO THE SIDE ON A SOFT SURFACE. USING A 24MM SOCKET, REMOVE THE CRASH BAR MOUNTS ON EACH FRAME RAIL.



STEP 6 | IF EQUIPPED WITH A SHROUD, USING A 10MM SOCKET AND PUSH PIN TOOL, REMOVE THE SHROUD FROM THE INTERCOOLER.

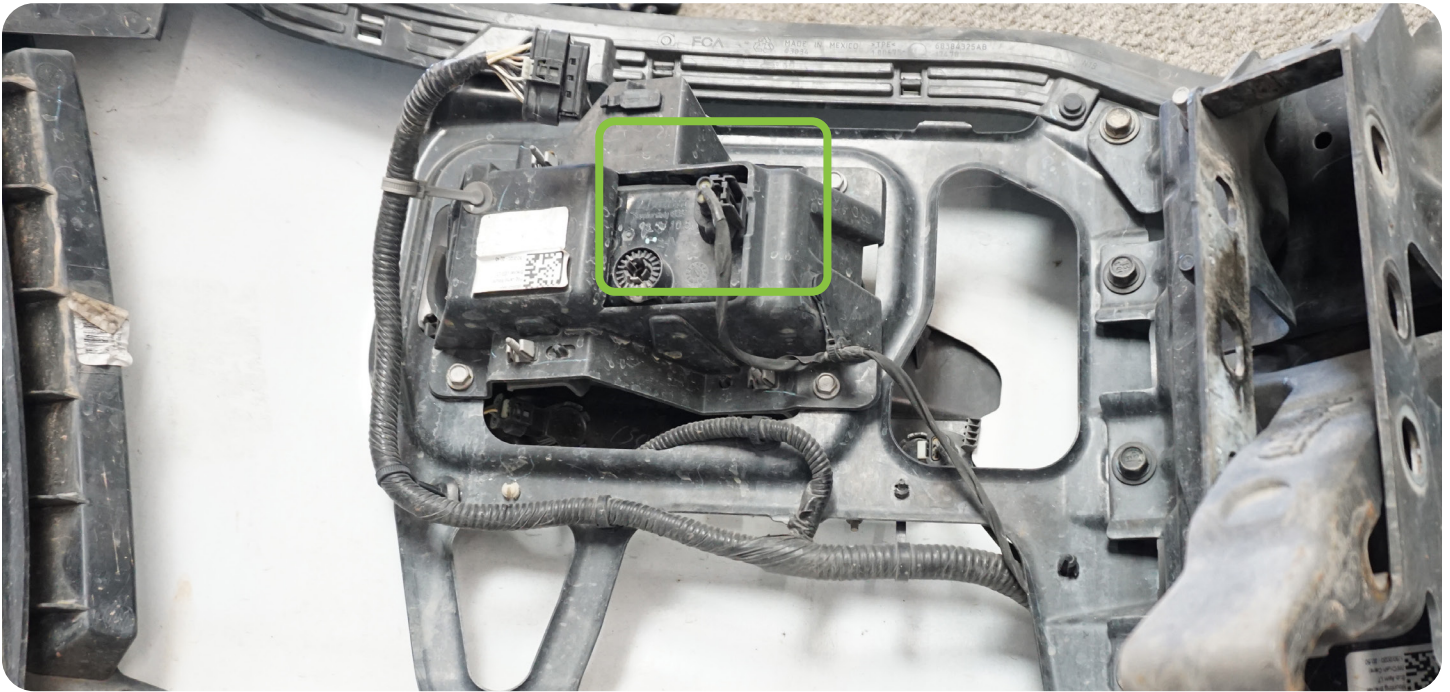
NOTE: LEAVE ALL BOLTS LOOSE AS YOU WILL NEED TO ALIGN THE TOP OF THE TUBE CORRECTLY. HAVING ANOTHER SET OF HANDS HELPS WITH THE INSTALLATION.



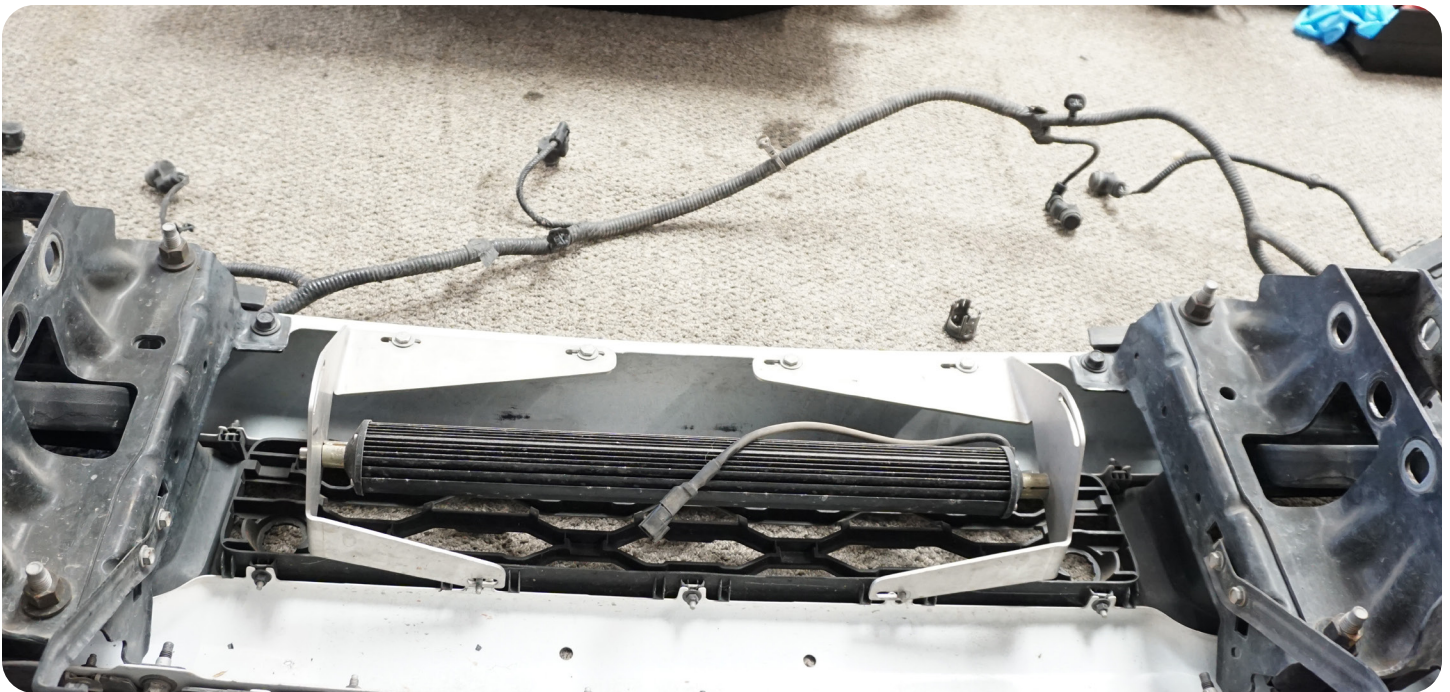
STEP 7 | WITH THE FACTORY BUMPER UNINSTALLED, BEGIN BY USING A TRIM TOOL TO RELEASE THE WIRE HARNESS CLIPS ALONG THE INSIDE THE BUMPER.



STEP 8 | UNPLUG THE HARNESS FROM THE FOG LIGHTS (IF EQUIPPED).



STEP 9 | REMOVE THE HARNESS FROM THE BUMPER AND SET FACTORY BUMPER OFF TO THE SIDE.



STEP 10 | TO START ASSEMBLING THE DV8 BUMPER, PLACE THE PROVIDED FOAM ONTO THE WING MOUNTING SURFACE. USING THE PROVIDED M14X35 HARDWARE, LOOSELY MOUNT THE WINGS ONTO THE BUMPER.



STEP 11 | ALIGN THE WINGS WITH THE TOP AND FACE OF THE BUMPER AND SURE WING BOLTS USING A 21 & 22MM WRENCHES UNTIL SECURE.



STEP 12 | THIS BUMPER CAN ACCEPT (1) 3" LIGHT POD IN EACH WING. USING THE HARDWARE PROVIDED WITH THE LIGHTS, INSTALL THEM ONTO THE BUMPER UNTIL SECURE NOW.



STEP 13 | LAY THE HARNESS FROM THE FACTORY BUMPER SO THAT THE PLUG IS TOWARDS THE DRIVERSIDE AND EACH SENSOR IS IN ITS APPROXIMATE LOCATION.

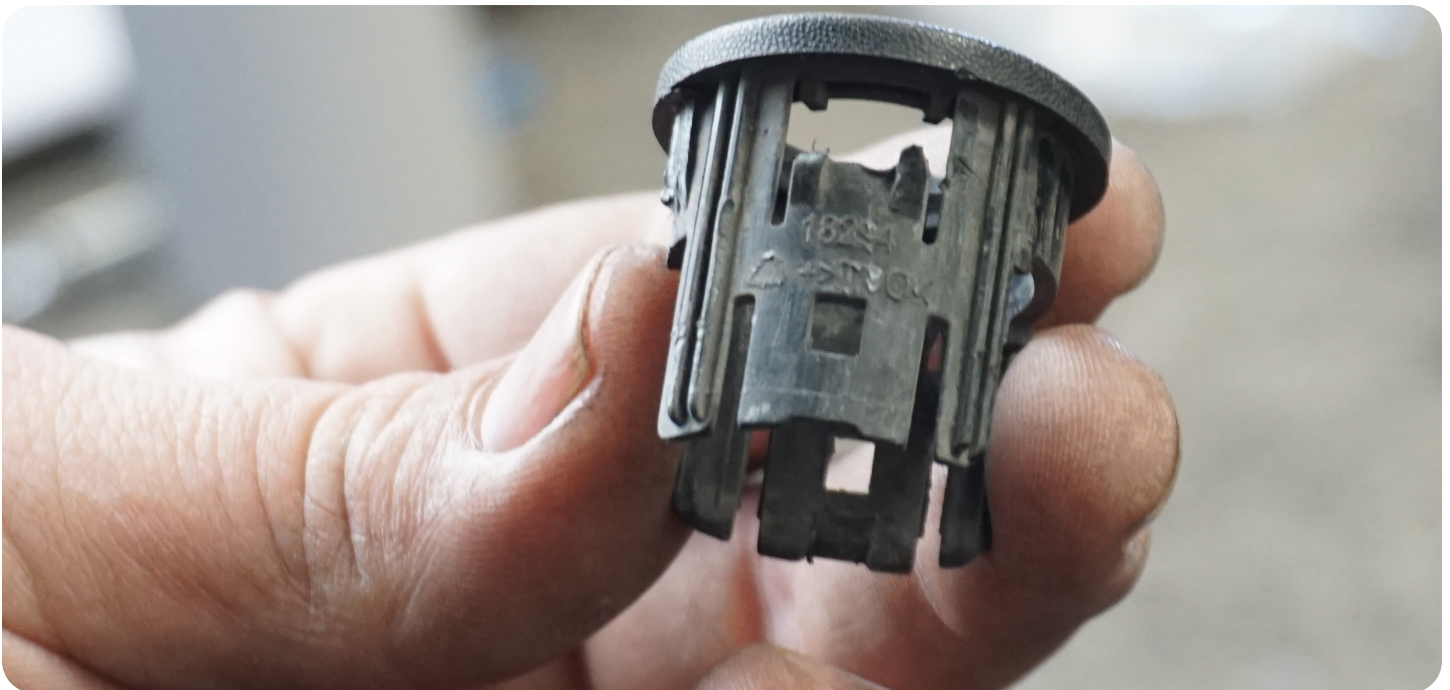


STEP 14 | FEED THE HARNESS THROUGH THE OPENING IN THE BUMPER UNTIL SENSORS ARE ALIGNED.



STEP 15 | USING THE FACTORY SENSOR BEZELS, YOU WILL NEED TO TRIM A SMALL AMOUNT OFF THE TABS THAT CLIP THE BEZELS ONTO THE BUMPER SINCE THE DV8 BUMPER IS THICKER MATERIAL. TRIM OFF A SMALL MOUNT AND CHECK FITMENT.

NOTE: DV8 DOES OFFER A REPLACEMENT SET OF BEZELS FOR RAM PART# MPRSNSR-01

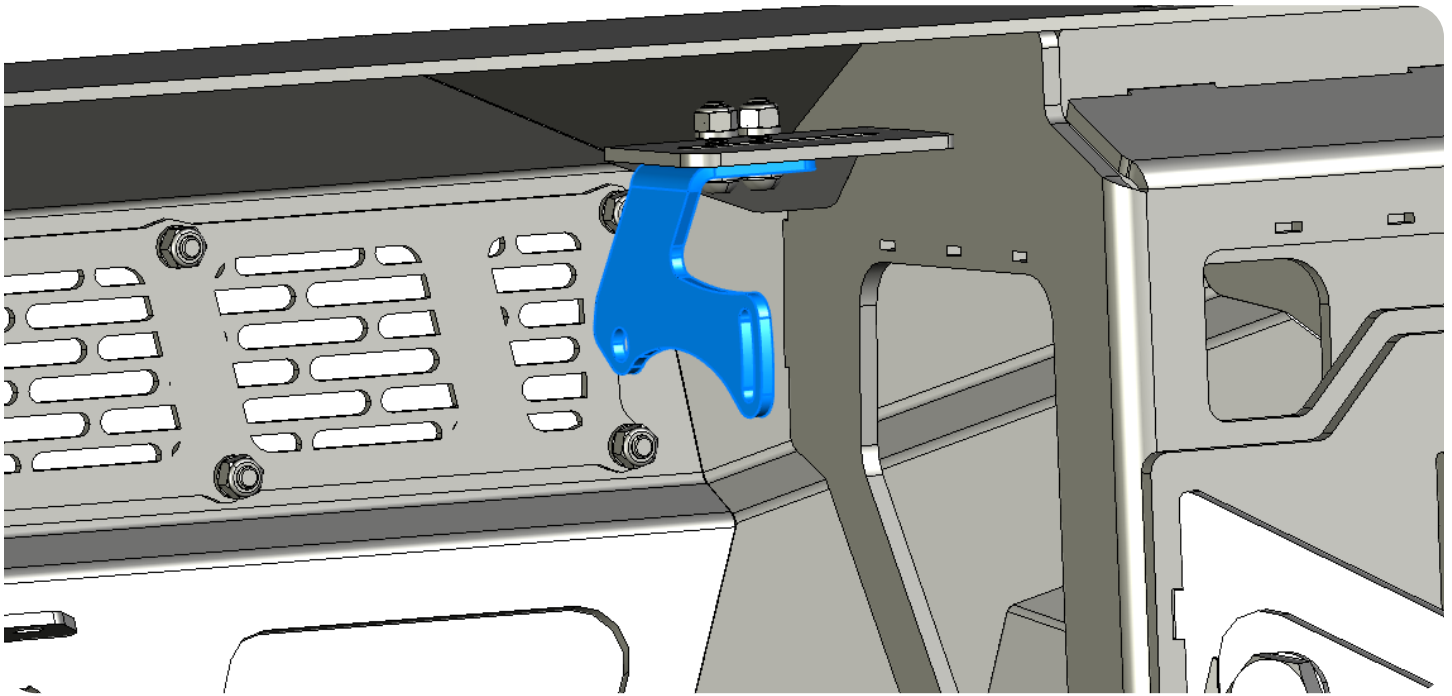


STEP 16 | INSERT THE BEZEL FROM THE FRONT SIDE OF THE BUMPER, AND THEN INSERT THE SENSOR FROM THE BACKSIDE UNTIL IT "CLICKS" INTO PLACE IN THE BEZEL. REPEAT FOR OTHER BEZELS.



STEP 17 | THE BUMPER CAN ALSO ACCEPT 20" LIGHT BAR BEHIND THE MESH IN THE CENTER. USING THE HARDWARE PROVIDED WITH THE LIGHTS, AND THE LIGHT MOUNTS PROVIDED WITH THE BUMPER, MOUNT THE LIGHT ONTO THE MOUNTS.

ONCE MOUNTED, USE THE PROVIDED M6 HARDWARE TO MOUNT THE LIGHTS ONTO THE BUMPER.



STEP 18 | USING A #4 ALLEN AND 10MM WRENCH, SECURE LIGHT BRACKETS.

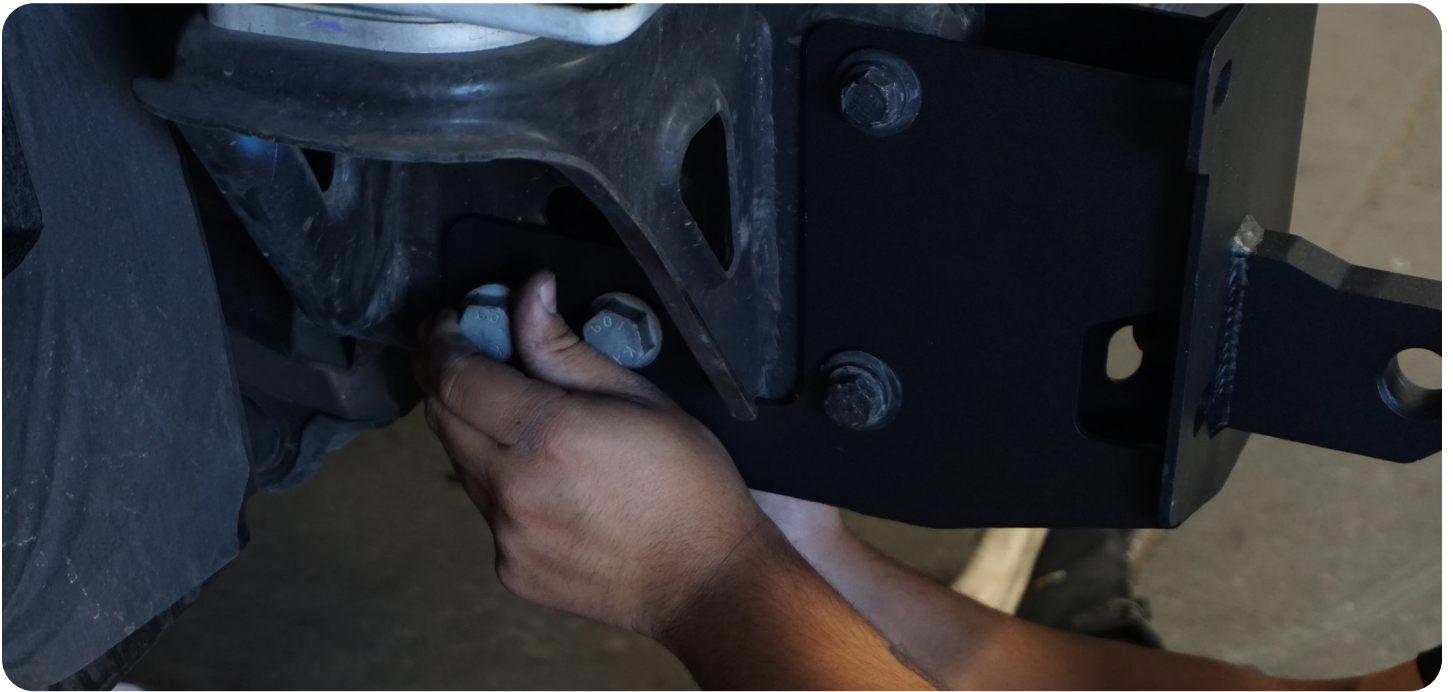


STEP 19 | USING THE WELDED IN ZIP TIE TAB, SECURE THE HARNESS TO THE BUMPER.



STEP 20 | MOUNT THE MAIN BUMPER MOUNTS ONTO THE FRAME USING THE FACTORY HARDWARE REMOVED EARLIER.





STEP 21 | YOU WILL EITHER NEED TO FOLD THESE TABS ON THE NUT FLAT, OR TRIM THEM DOWN SO THEY DO NOT HIT EACH OTHER WHEN INSTALLING.



STEP 22 | USING THE WELDED IN ZIP TIE TAB, SECURE THE HARNESS TO THE BUMPER.

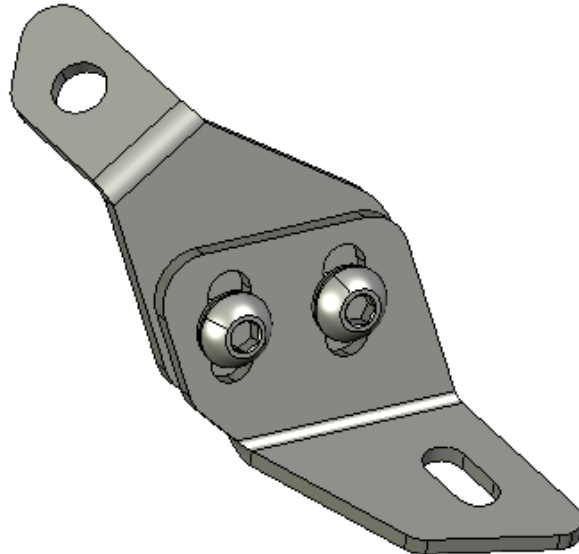


STEP 23 | WITH THE FRAME MOUNTS STILL LOOSE, INSTALL THE WINCH MOUNT TO THE FRAME MOUNTS USING THE PROVIDED M14X35 BOLTS AND WASHERS.

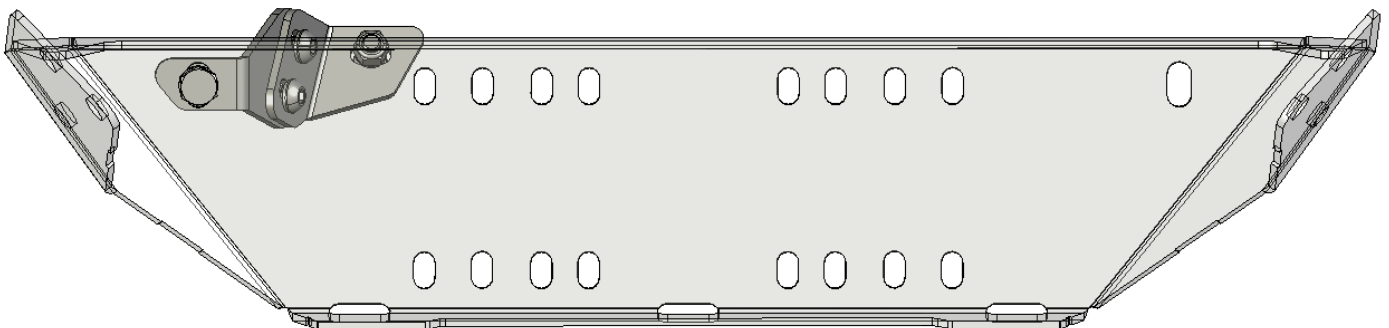
NOTE: IF RUNNING A WINCH, INSTALL WINCH MOW USING HARDWARE SUPPLIED WITH THE WINCH.



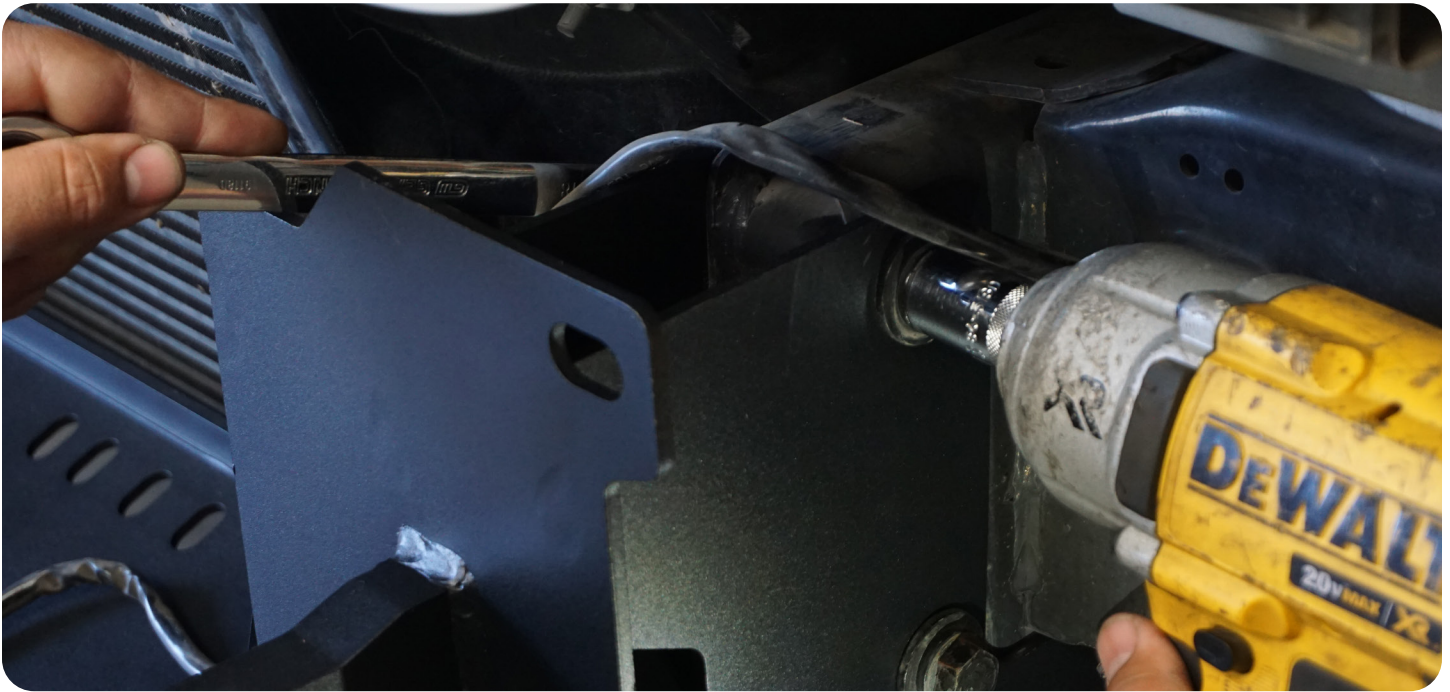
STEP 24 | LOOSELY ASSEMBLE THE WINCH SUPPORT BRACKETS. PASSENGER SIDE SHOWN HERE. USE THE PROVIDED M12X30 ALLEN HEAD BOLTS AND HARDWARE.



STEP 25 | INSTALL THEM ONTO THE WINCH PLATE AS SHOWN, THESE WILL CONNECT TO THE BOTTOM SIDE THE BUMPER ONCE BUMPER IS MOUNTED.



STEP 26 | ONCE THE WINCH PLACE IS SECURED USING A 21MM SOCKET, TIGHTEN THE FRAME MOUNTS AND FACTORY HARDWARE USING A 24MM SOCKET AND 18MM SOCKET AND WRENCH.

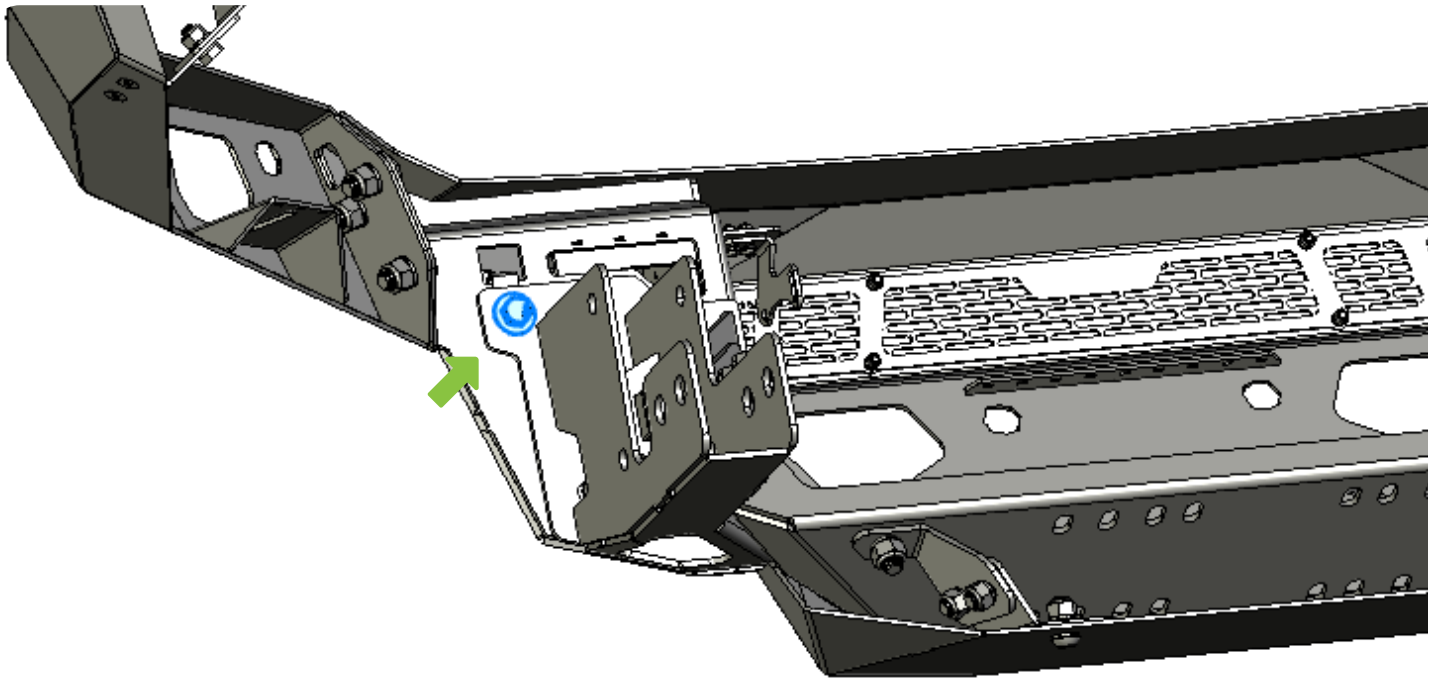


STEP 27 | USING THE PROVIDED M12 NUTCLIPS, INSERT THESE INTO THE BUMPER AS SHOWN (1) PER SIDE.

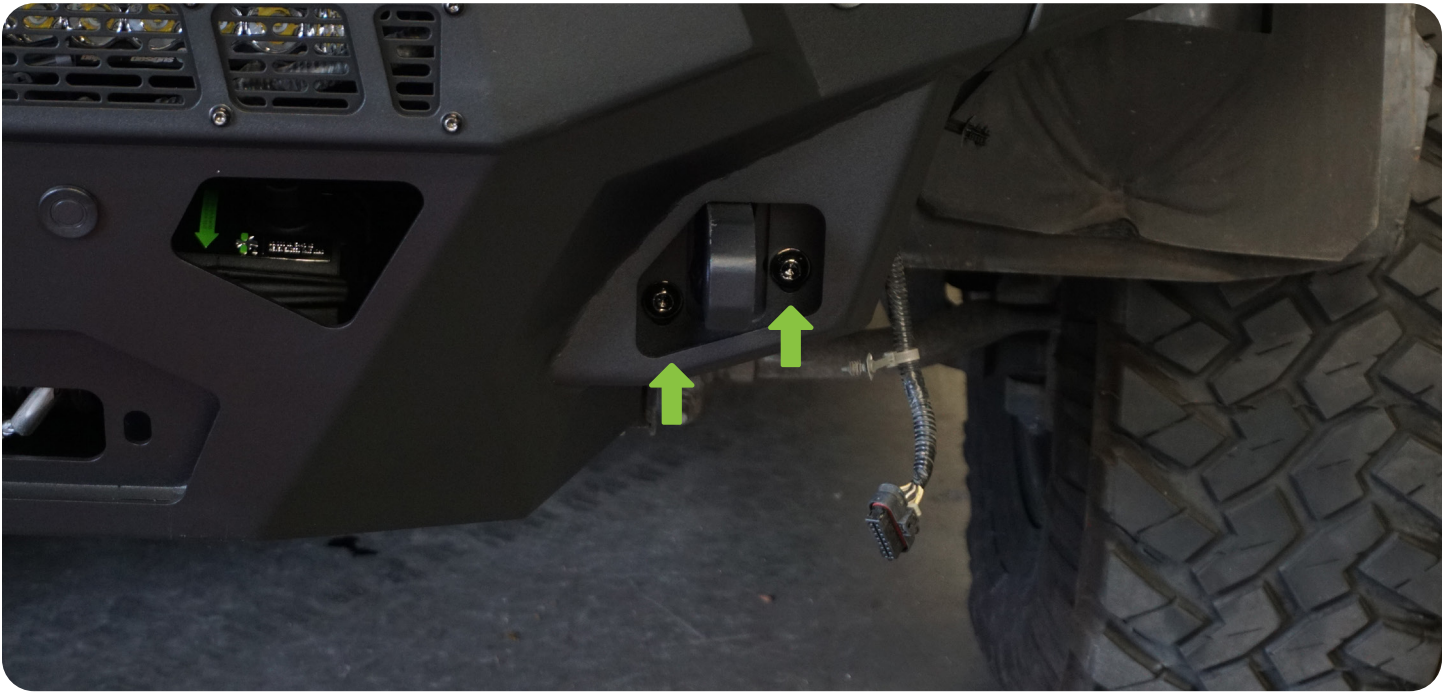


STEP 28 | WITH ASSISTANCE LIFT THE BUMPER INTO THE MOUNTS. USING THE PROVIDED M12X40 BOLTS AND SPLIT WASHER, LOOSELY ATTACH THE BUMPER TO THE BRACKET ON THE UPPER BOLT.

NOTE: BE CAREFUL TO NO DAMAGE THE COATING ON THE DRINGS WHEN LIFTING THE BUMPER INTO PLACE.



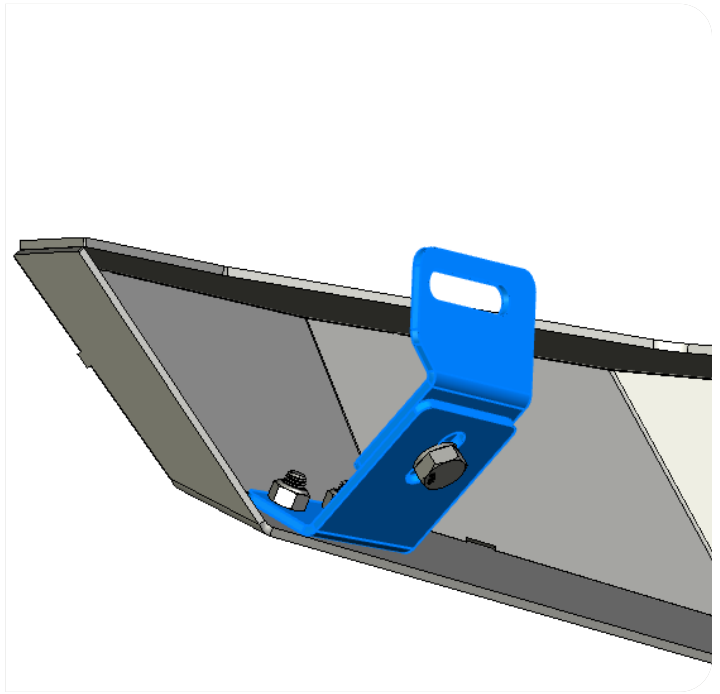
STEP 29 | WITH THE UPPER BOLT LOOSELY INSTALLED, USING THE REMAINING M12 ALLEN HEAD BOLTS AND HARDWARE, SECURE THE (4) LOWER THROUGH BOLTS AROUND THE D-RINGS.



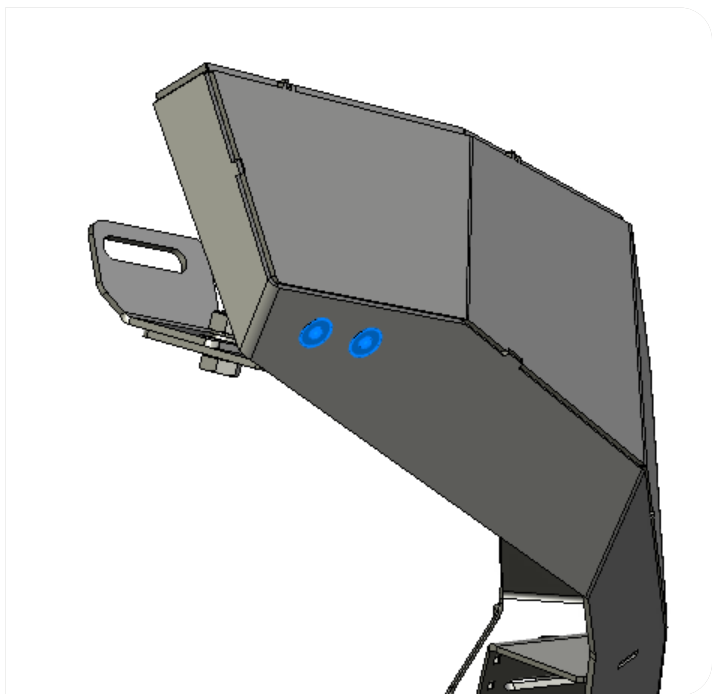
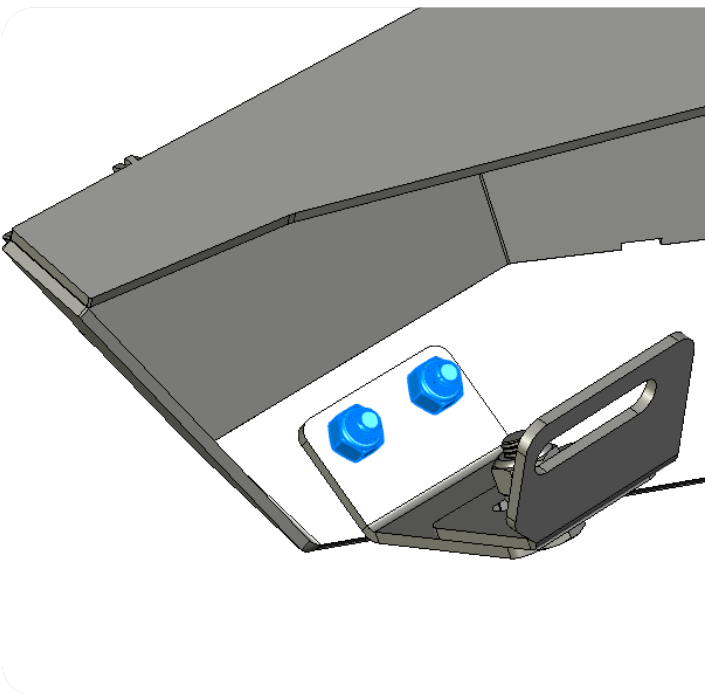
STEP 30 | ONCE ALL BOLTS ARE INSTALLED, ENSURE BUMPER IS CENTERED LEFT TO RIGHT AND UP AND DOWN AND SECURE. REAR (2) BOLTS WILL USE A 17MM SOCKET, AND FRONT (4) BOLTS WILL USE A #8 ALLEN HEAD AND 18MM SOCKET.



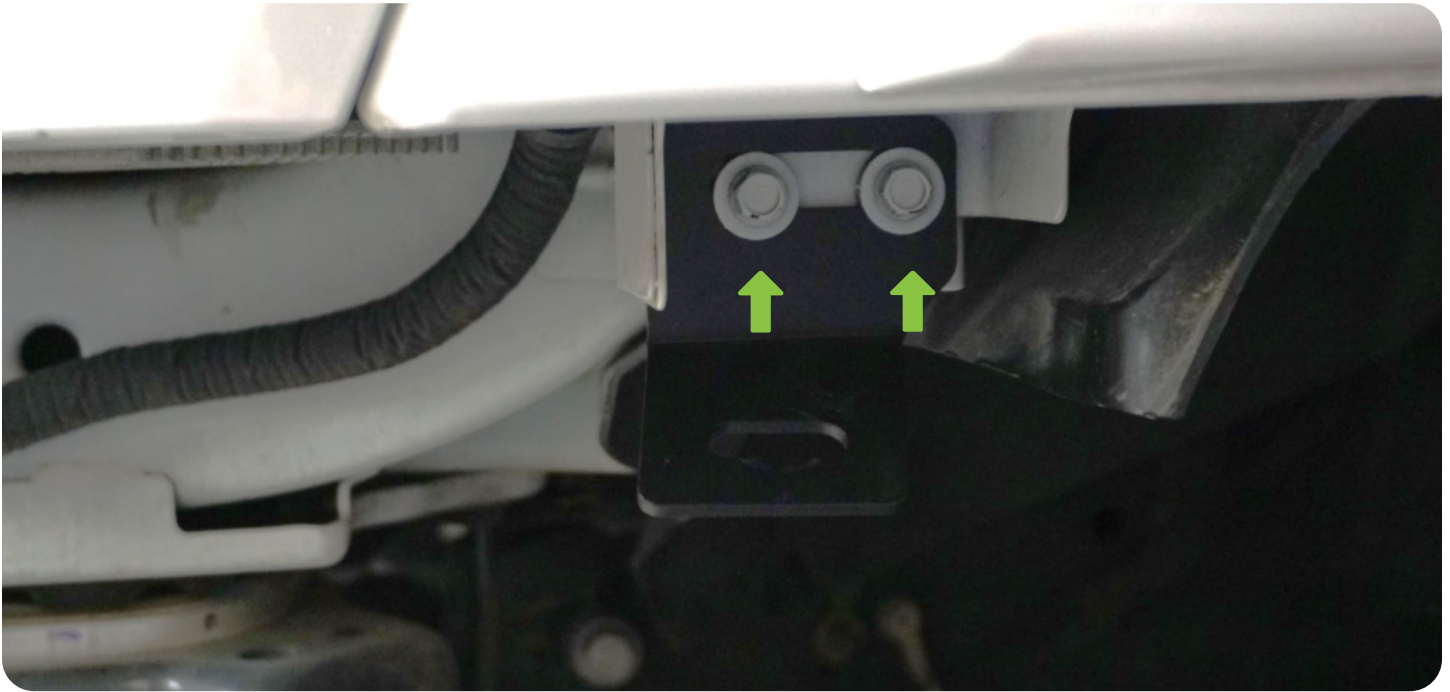
STEP 31 | WITH THE BUMPER SECURE, ASSEMBLE THE WING SUPPORT WITH THE PROVIDED M10X25 HEX HEAD CENTER BOLT AND HARDWARE.



STEP 32 | USING THE PROVIDED M8 COUNTERSUNK ALLEN HEAD BOLTS, WASHERS AND NUT, SECURE BRACKET ONTO WING USING A #5ALLEN AND 13MM SOCKET.



STEP 33 | USING A 13MM SOCKET, REMOVE THE TWO FENDER BOLTS AND SECURE THE BRACKET TO THE BODY BOLTS.



STEP 34 | ADJUST THE WING BY SLIGHTLY PUSHING IT INTO PLACE WHERE IT ALIGNS WITH THE BODY, AND USING A 16MM SOCKET AND 17MM WRENCH.



STEP 35 | ON THE UNDERSIDE OF THE BUMPER, SECURE THE WINCH SUPPORT MOUNTS FROM THE WINCH PLATE TO THE BUMPER USING THE PROVIDED M12X30MM ALLEN HEAD BOLTS AND A #8 ALLEN TOOL AND 19MM WRENCH.



STEP 36 | USING THE SAME TOOL AS THE PREVIOUS STEP. TIGHTEN THE TWO BOLTS IN THE CENTER OF THE BRACKETS UNTIL TIGHT.



STEP 37 | ENSURE ALL BOLTS HOLDING THE BUMPER, WINGS, AND WINCH SUPPORT ARE TIGHT. USING A CUTTING TOOL OR RAZOR BLADE, CAREFULLY TRIM THE INNER FENDERS AS THEY ARE NOT VISIBLE FROM THE FRONT WITHOUT REMOVING CRUCIAL MOUNTING POINTS TO KEEP THEM SECURE. REPEAT ON BOTH SIDES.



STEP 38 | DOUBLE CHECK ALL HARDWARE IS SECURE.



CONGRATULATIONS

YOU ARE FINISHED WITH THE INSTALL OF THE 2019+ RAM 2500/3500 SPEC SERIES FRONT BUMPER

+ SHARE YOUR PICS

WE LOVE SEEING HOW OUR CUSTOMERS USE THEIR DV8 OFFROAD PRODUCTS AND FOLLOWING ALONG WITH YOUR ADVENTURES. TAG US IN YOUR PHOTOS @DV8OFFROAD.WE ENJOY SHARING CUSTOMER PHOTOS ON OUR FEED.



+ WRITE A REVIEW

ARE YOU HAPPY WITH YOUR NEW DV8 OFFROAD PRODUCT? WE WOULD LOVE TO HEAR AND SEE YOUR EXPERIENCE. VISIT THE PRODUCT PAGE AND CLICK "WRITE A REVIEW". ADD A SHORT REVIEW AND UPLOAD A FEW PHOTOS TO BE FEATURED ON THE PRODUCT PAGE.

WWW.DV8OFFROAD.COM



+ NEED HELP?

IF YOU ARE HAVING ANY ISSUES WITH YOUR PRODUCT, PLEASE REACH OUT. DV8 OFFROAD IS A COMPANY OF OFF ROAD ENTHUSIASTS THAT DESIGN AND USE OUR OWN PRODUCTS, SO WE WANT YOU TO BE JUST AS STOKED ON YOUR NEW PARTS AS WE ARE.

P. 855.680.9595

E. SALES@DV8OFFROAD.COM

