



INSTALLATION INSTRUCTIONS

Not legal for sale or use in California on any pollution controlled motor vehicle.

70-3070

CADILLAC / CHEVROLET / GMC

2009-14 Escalade ESV / EXT

V8-6.2L

2009-13 Avalanche

V8-5.3L / 6.0L

2009-13 Silverado 1500

V8-4.8L / 5.3L / 6.2L

2009-14 Suburban

V8-5.3L / 6.0L

2009-14 Tahoe

V8-4.8L / 5.3L / 6.2L

2009-14 Yukon, Denali / Denali XL / XL 1500

V8-4.8L / 5.3L / 6.2L

2009-13 Sierra, Denali 1500

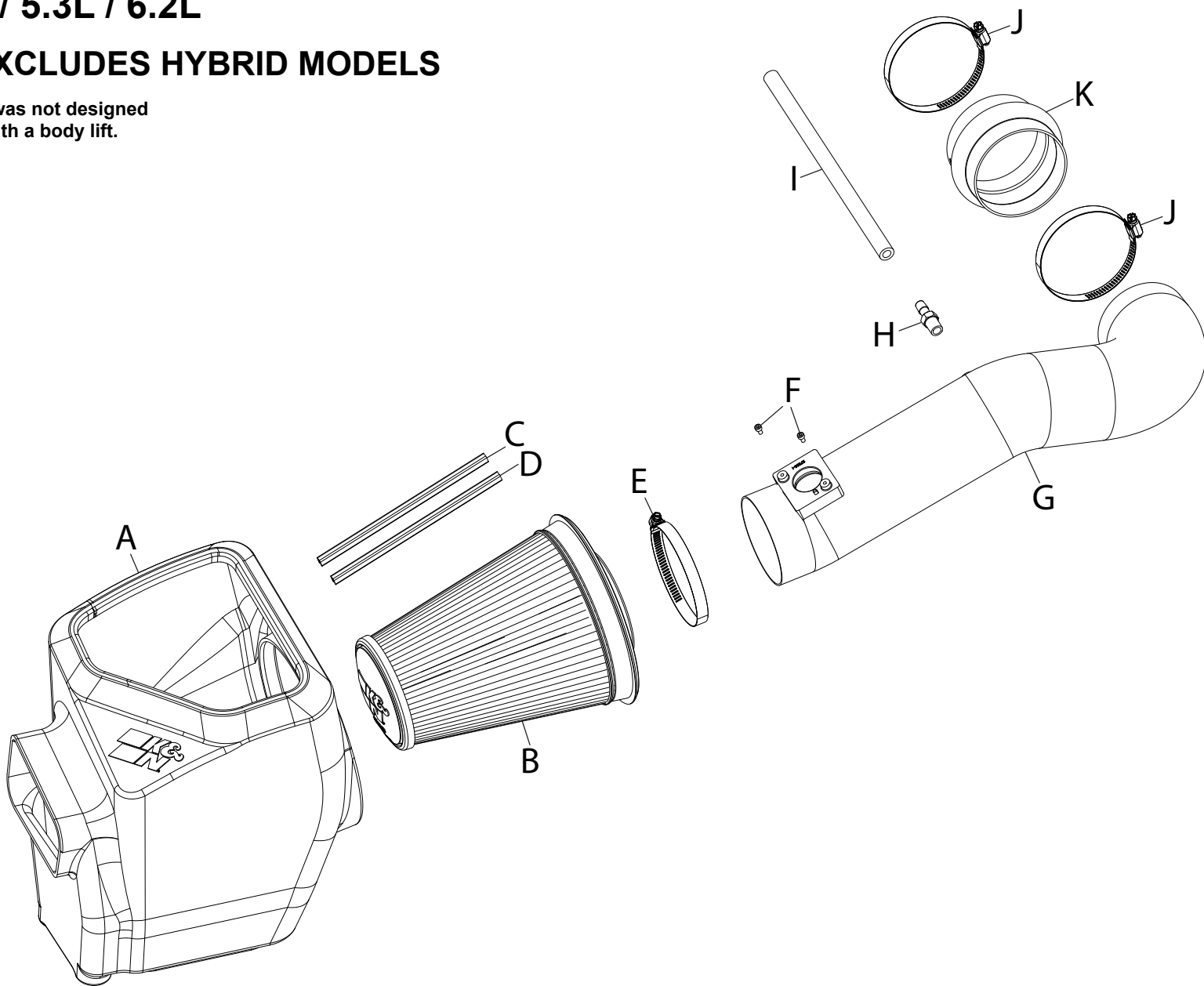
V8-4.8L / 5.3L / 6.2L

NOTE: EXCLUDES HYBRID MODELS

NOTE: This kit was not designed to fit vehicles with a body lift.

TOOLS NEEDED:

- Flat Blade Screwdriver
- 9/16" Wrench
- 10mm Socket
- Extension
- Ratchet
- T15 Torx
- 4mm Allen Key
- 3mm Allen Key
- 5/16" Socket / Nut Driver



PARTS LIST:

Description	Qty.	Part #	Description	Qty.	Part #	Description	Qty.	Part #
A AIRBOX	1	087608A	E HOSE CLAMP; #72, BLK	1	08671KA	I HOSE; 3/8"ID X 12"L	1	08412
B AIR FILTER	1	RU-5342	F BOLT; M4.7 X 8MM, ALN HD	2	07733	J HOSE CLAMP; #64, BLK	2	08645KA
C CLIP; FILTER, ORANGE	1	088219	G TUBE; 4"OD X 23"L	1	27694C	K HOSE; HUMP 4"ID X 3"L	1	08418
D CLIP; FILTER, RED	1	088218	H VENT; 3/8" HOSE, 1/4" NPT	1	08047			

If you need any assistance please call 1-800-858-3333 to speak with a representative in our Customer Service Center before returning the product.

NOTE: FAILURE TO FOLLOW INSTALLATION INSTRUCTIONS AND NOT USING THE PROVIDED HARDWARE MAY DAMAGE THE INTAKE TUBE, THROTTLE BODY AND ENGINE.

TO START:

1. Turn off the ignition and disconnect the negative battery cable.

NOTE: Disconnecting the negative battery cable erases pre-programmed electronic memories. Write down all memory settings before disconnecting the negative battery cable. Some radios will require an anti-theft code to be entered after the battery is reconnected. The anti-theft code is typically supplied with your owner's manual. In the event your vehicles anti-theft code cannot be recovered, contact an authorized dealership to obtain your vehicles anti-theft code.



2. Disconnect the mass air electrical connection.



3. Lift up on the engine cover and remove as shown.



4. Unhook the radiator hose mount from the intake tube.



5. Unhook the crankcase vent line from the intake tube plenum as shown.



6. Loosen the hose clamps which secure the stock intake tube, then remove the intake tube from the vehicle.



7. Rotate the crankcase vent line counter clockwise on the valve cover port, and then release the locking tab and remove the crankcase vent line from the valve cover.

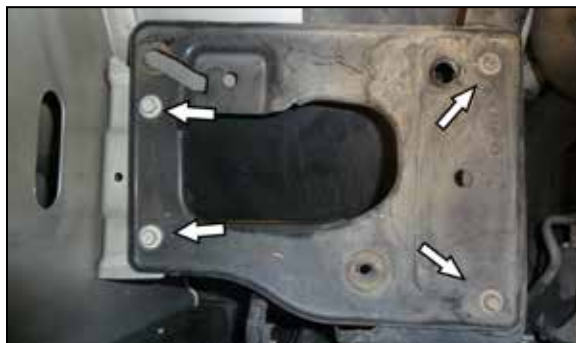


8. Pull firmly upward to release the air cleaner assembly from the mounting tray grommets. Then remove the assembly as shown.

NOTE: K&N recommends that customers do not discard factory air intake.



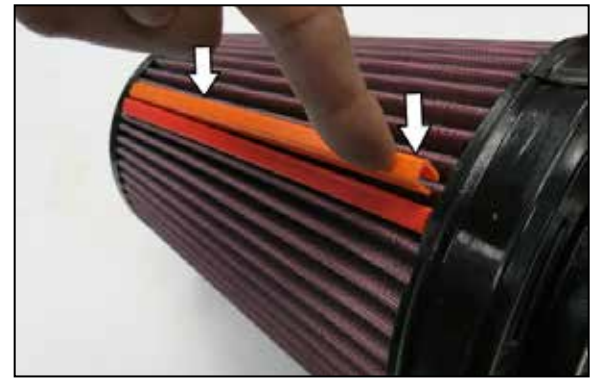
9. Remove the two screws securing the mass air sensor to the air box and then remove the mass air sensor from the air box as shown.



10. Remove the OEM air box bracket, and save 3 bolts for the K&N air box install.



11. Install the K&N air box and secure using the 3 bolts from previous step.



12. Attach the filter clips to the pleats on the air filter align and push down. Passenger side filters, place orange clip on top and red on bottom.



13. Install the air filter into the K&N air box.



14. Install the hump hose with clamps to the throttle body. Do not tighten.



15. Install the provided 1/4" NPT fitting into the K&N intake tube as shown.

NOTE: NPT fittings are easy to cross thread. Install the vent fitting "hand" tight, then turn it two complete turns with a 9/16" wrench.



16. Install the MAF sensor assembly into the K&N intake tube and secure with the provided hardware like image shown above.



17. Now install the intake tube assembly and position to the air box and throttle body. Tighten clamps using 5/16" socket or nut driver.
Note: Do not over tighten clamps.



18. Re-connect the MAF sensor harness.



19. Connect the provided 3/8" crank case hose to the engine fitting and fitting on intake tube.



20. Install the provided K&N decal to the intake tube at desired position.



20. Re-install the engine cover.



21. Reconnect the vehicle's negative battery cable. Double check to make sure everything is tight and properly positioned before starting the vehicle.

22. **K&N AIR FILTER MONITOR LIGHT:** Some vehicles are equipped with a "Air Filter Monitor" system that will send a message to the instrument cluster indicating that the air filter needs to be replaced. This system is calibrated for the OEM intake system and air filter and will not be accurate when K&N products are in use. Always refer to WWW.KNFILTERS.COM for K&N air filter service procedures. The "Air Filter Monitor" system must be disabled to prevent the monitor from setting on and causing a factory dealership visit to reset the system. Follow the "Air Filter Monitor" system procedure listed in the factory owners manual.

23. It will be necessary for all K&N® high flow intake systems to be checked periodically for realignment, clearance and tightening of all connections. Failure to follow the above instructions or proper maintenance may void warranty.

ROAD TESTING:

1. Start the engine with the transmission in neutral or park, and the parking brake engaged. Listen for air leaks or odd noises. For air leaks secure hoses and connections. For odd noises, find cause and repair before proceeding. This kit will function identically to the factory system except for being louder and much more responsive.

2. Test drive the vehicle. Listen for odd noises or rattles and fix as necessary.

3. If road test is fine, you can now enjoy the added power and performance from your kit.

4. K&N Engineering, Inc., requires cleaning the intake system's air filter element every 50,000 miles. When used in dusty or off-road environments, our filters will require cleaning more often. We recommend that you visually inspect your filter once every 25,000 miles to determine if the screen is still visible. When the screen is no longer visible some place on the filter element, it is time to clean it. To clean, purchase our Synthetic Filter Cleaner, part number 99-0624 and follow the easy instructions.