

3L Surge Tank (6-000-30ST)



The 3L Surge Tank is engineered to provide massive amounts of fuel flow, reliably and consistently for high-performance applications. The 3L Surge Tank includes the functionality of traditional surge tanks, but with increased installation flexibility through an innovative mounting and fuel line connection design. With a merged single point outlet, single or dual, brushed or brushless pump configurations can be installed inside the tank, supporting 200hp to 2500hp

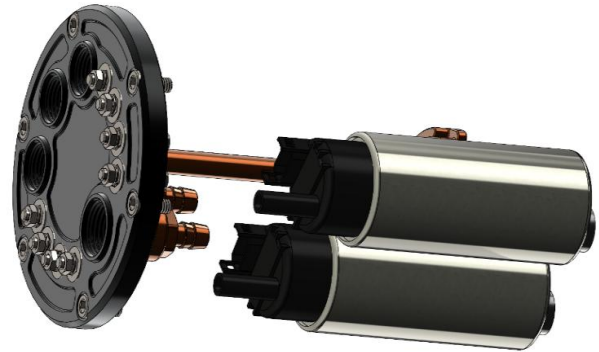
- Configurable for single or dual pump setups
- Compatible with 39mm and 46mm pumps
- Single or Dual Stage capability
- Brushless pump compatible
- Can be mounted in Horizontal or Recessed orientations
- -10 AN O-ring boss outlet
- High-amp rated, threaded stainless steel terminals

Specifications

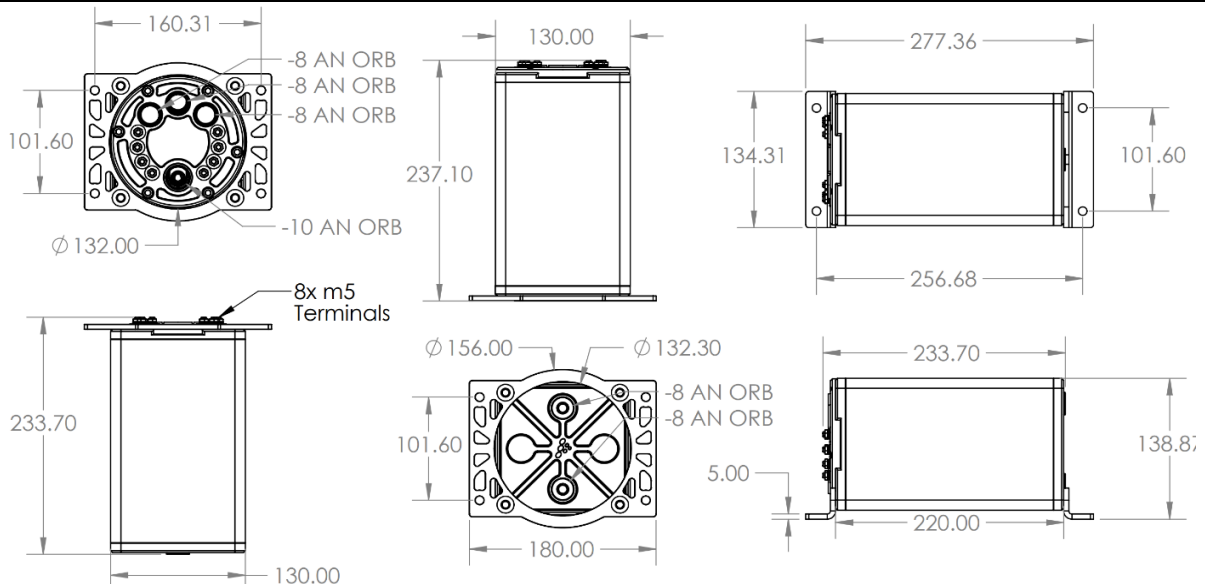
Weight w/o Pumps	4.56 pounds (2.07 kilograms)
Material	Anodized Aluminum
Modular Design	One or Two In-Tank Pumps
Pump OD Fitments	39mm or 46mm
Connector Terminal	M5 Stud x 4
Pump Outlet Fitting	-10 AN O-Ring Boss
Return/Inlet Fittings	-8 AN O-Ring Boss x 5
Max HP (DW810 x2)	2500
Compatible Pumps	DW200, DW300, DW550, and DW810

Note: Sold with no pumps, DW300, 420, 550 or 810 pumps.

Pump Mount Assembly



Dimensions



THIS PRODUCT MAY BE USED SOLELY ON VEHICLES USED IN SANCTIONED COMPETITION WHICH MAY NEVER BE USED UPON A PUBLIC ROAD OR HIGHWAY, UNLESS PERMITTED BY SPECIFIC REGULATORY EXEMPTION